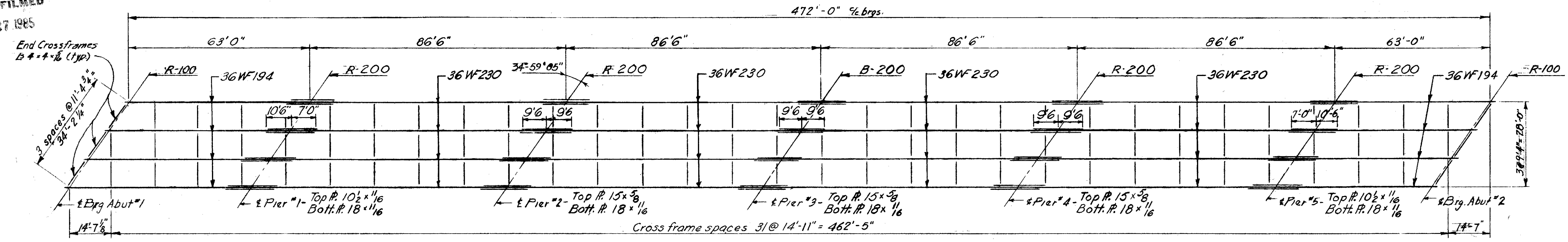
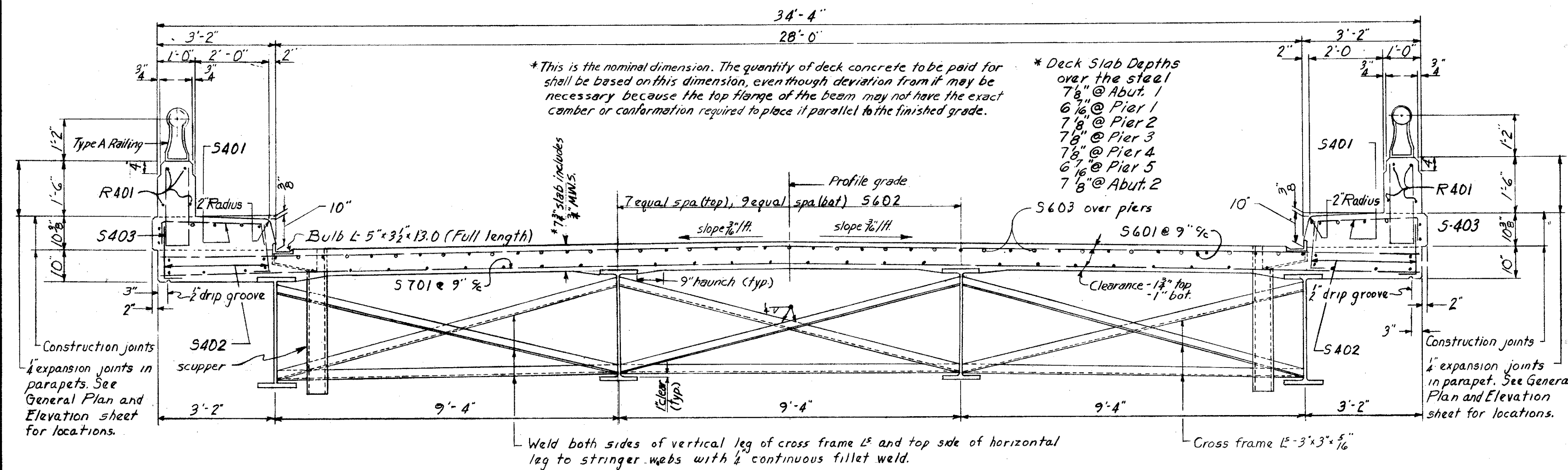


MICROFILMED  
JUN 27 1985

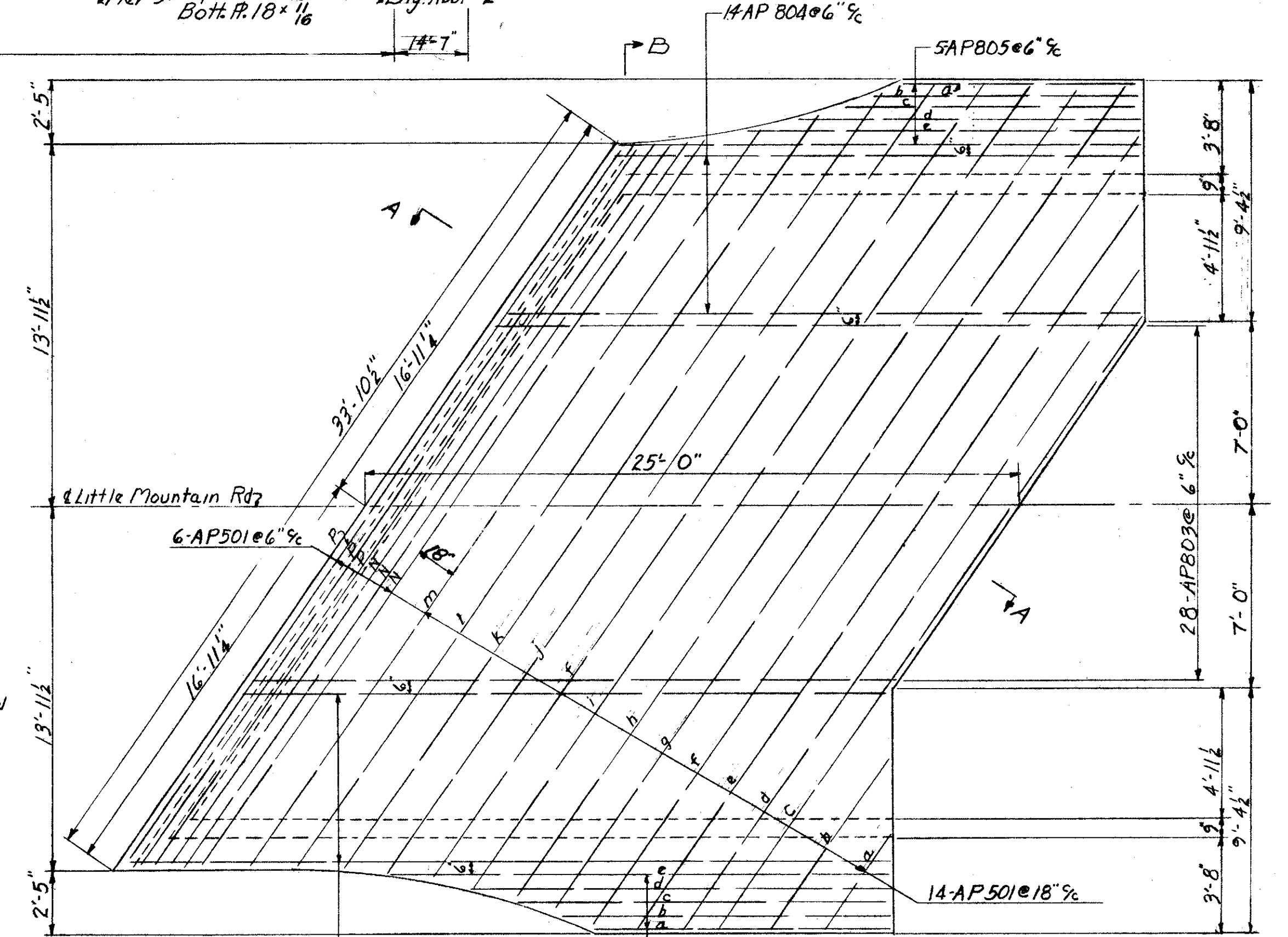
LAKE COUNTY  
SEC. LAK - 1 - 6.97



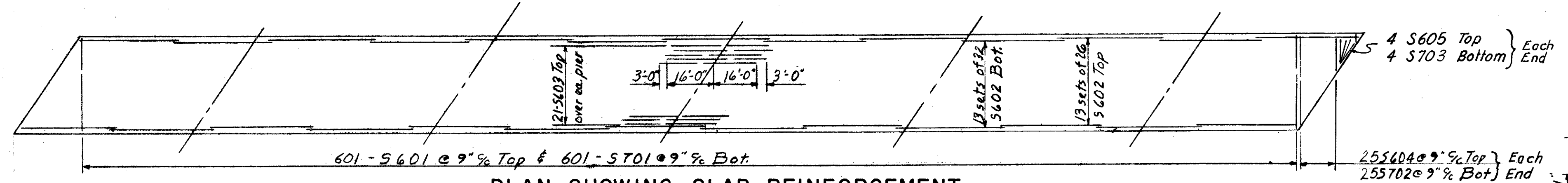
STEEL FRAMING PLAN



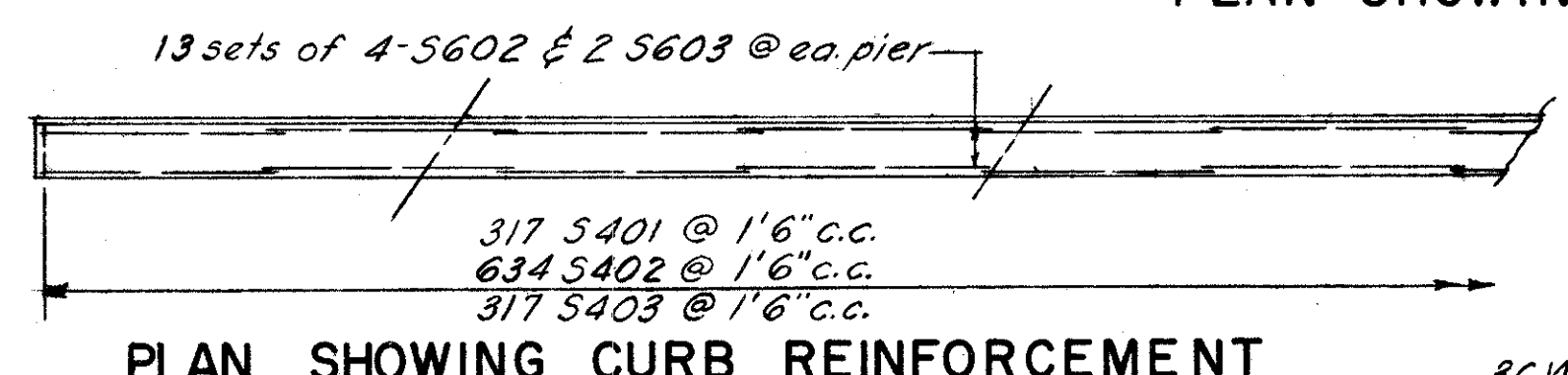
TRANSVERSE SECTION OF DECK



PLAN OF APPROACH SLAB

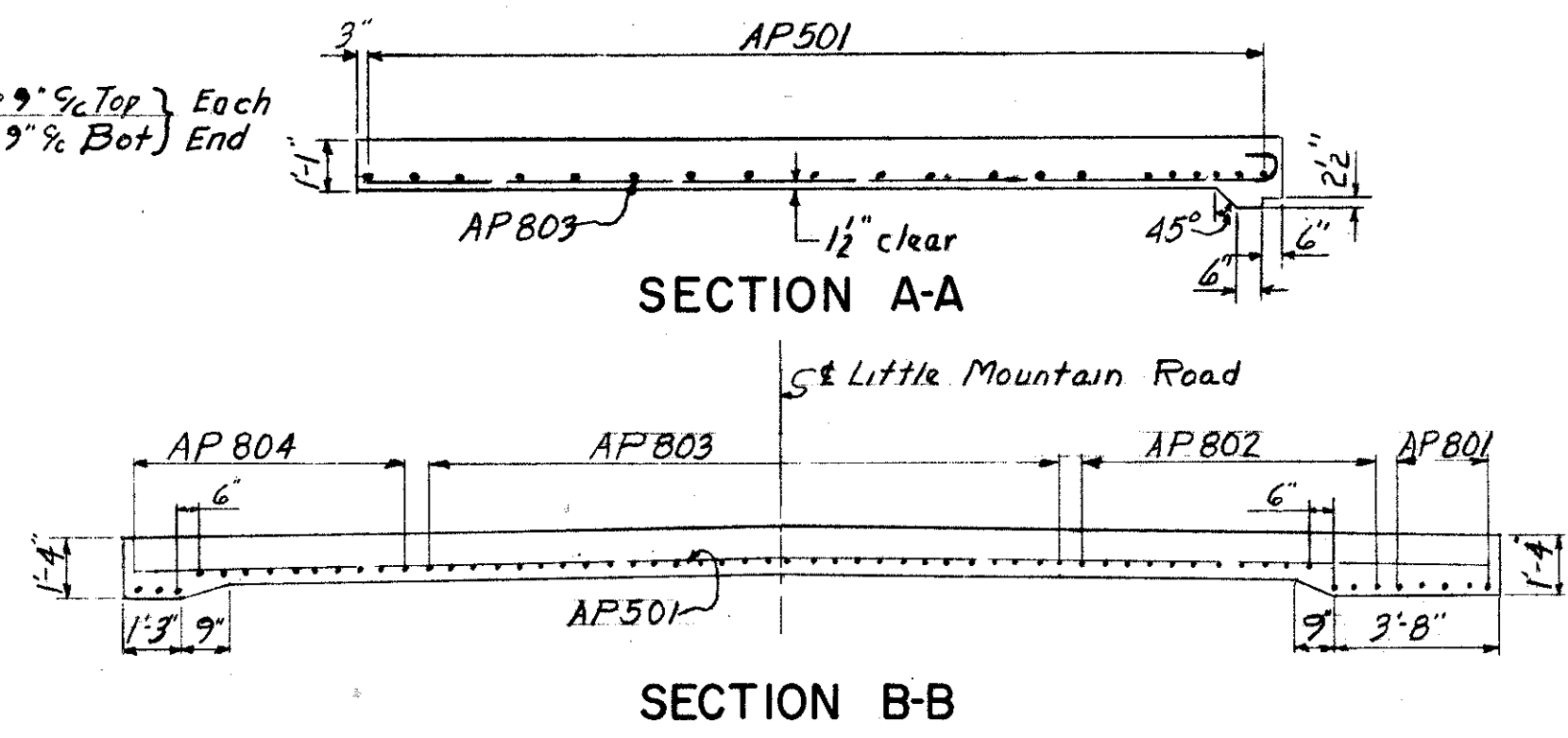
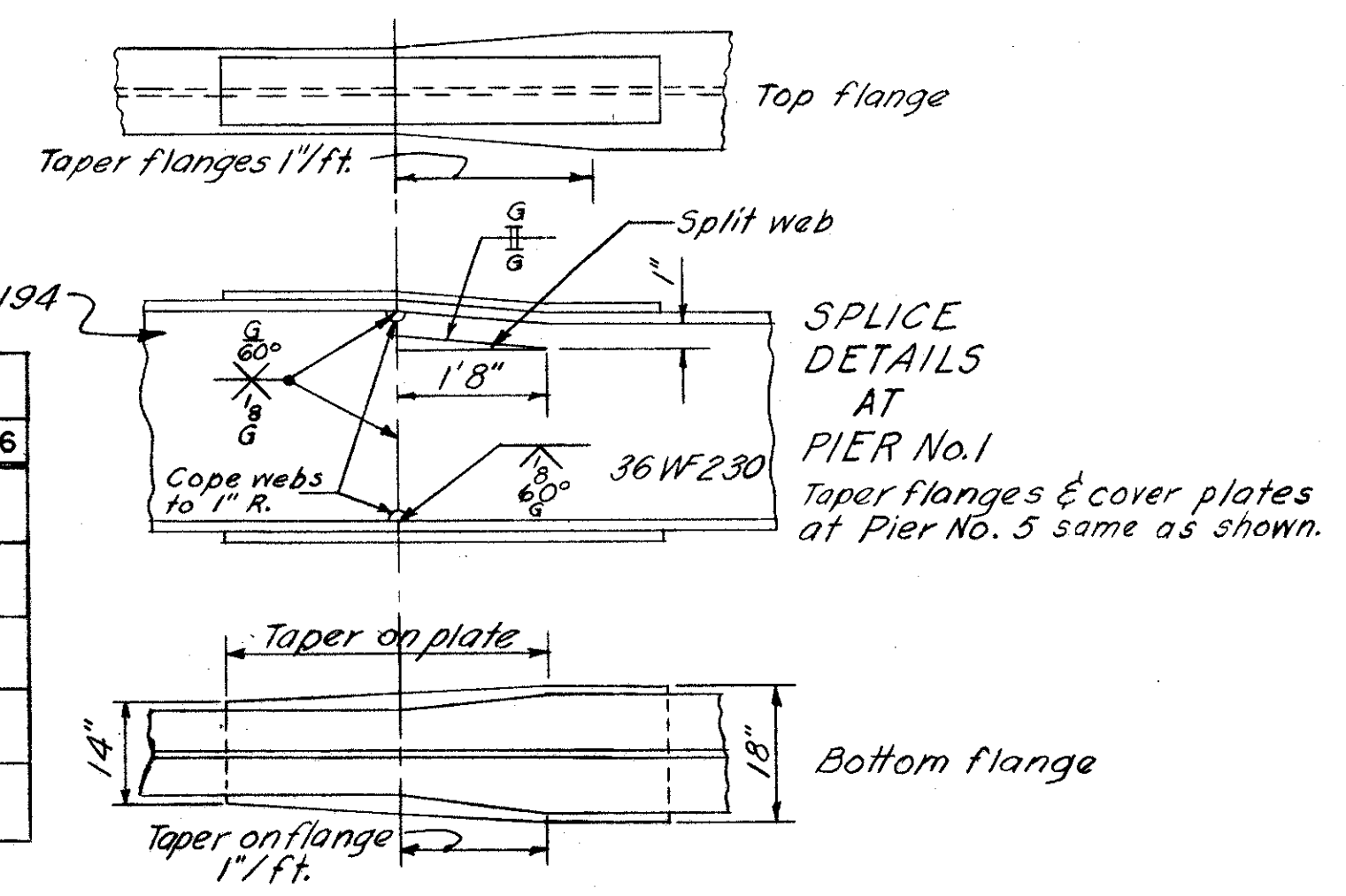


PLAN SHOWING SLAB REINFORCEMENT



PLAN SHOWING CURB REINFORCEMENT

DEFLECTION & CAMBER						
	SPAN NO.1	SPAN NO.2	SPAN NO.3	SPAN NO.4	SPAN NO.5	SPAN NO.6
Deflection due to Weight of Steel	1/16"	1/8"	1/8"	1/8"	1/8"	1/16"
Deflection due to remaining Dead Load	3/8"	13/16"	13/16"	13/16"	13/16"	1/4"
Convexity required for Vertical Curve	0"	0"	0"	0"	0"	0"
Sum of Deflection and Convexity	7/16"	15/16"	15/16"	15/16"	15/16"	5/16"
Required Camber	0"	1"	1"	1"	1"	0"



SECTION A-A

SECTION B-B

For "Superstructure Notes" see "General Plan" sheet.

SEC. C-31

PREPARED BY  
CAPITOL ENGINEERING ASSOCIATES, DILLSBURG, PA.  
FOR

STATE OF OHIO  
DEPARTMENT OF HIGHWAYS  
DIVISION OF DESIGN AND CONSTRUCTION  
BUREAU OF BRIDGES

**SUPERSTRUCTURE**  
BRIDGE NO. LAK-1-0930  
S.R. 1 UNDER LITTLE MOUNTAIN RD.  
LAKE COUNTY  
STA. 133 + 23.74

DESIGNED	DRAWN	TRACED	CHECKED	REVIEWED DATE	REVISED
	JEB		mcj		