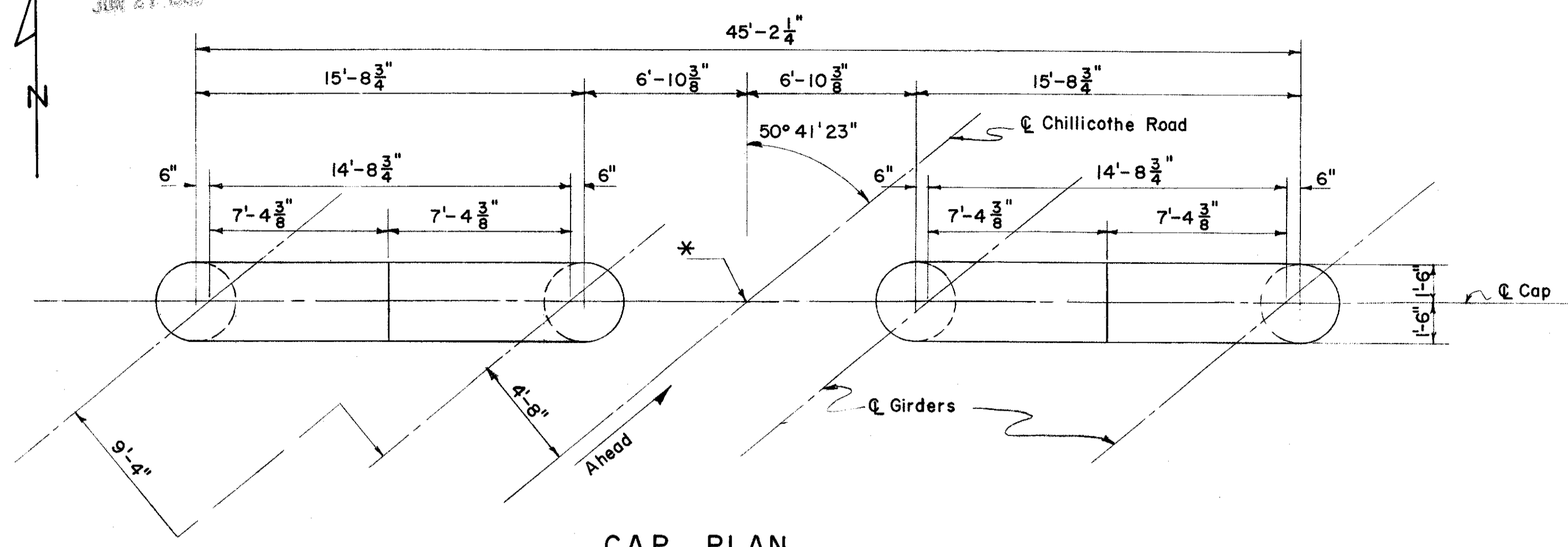


MICROFILMED  
JUN 27 1965

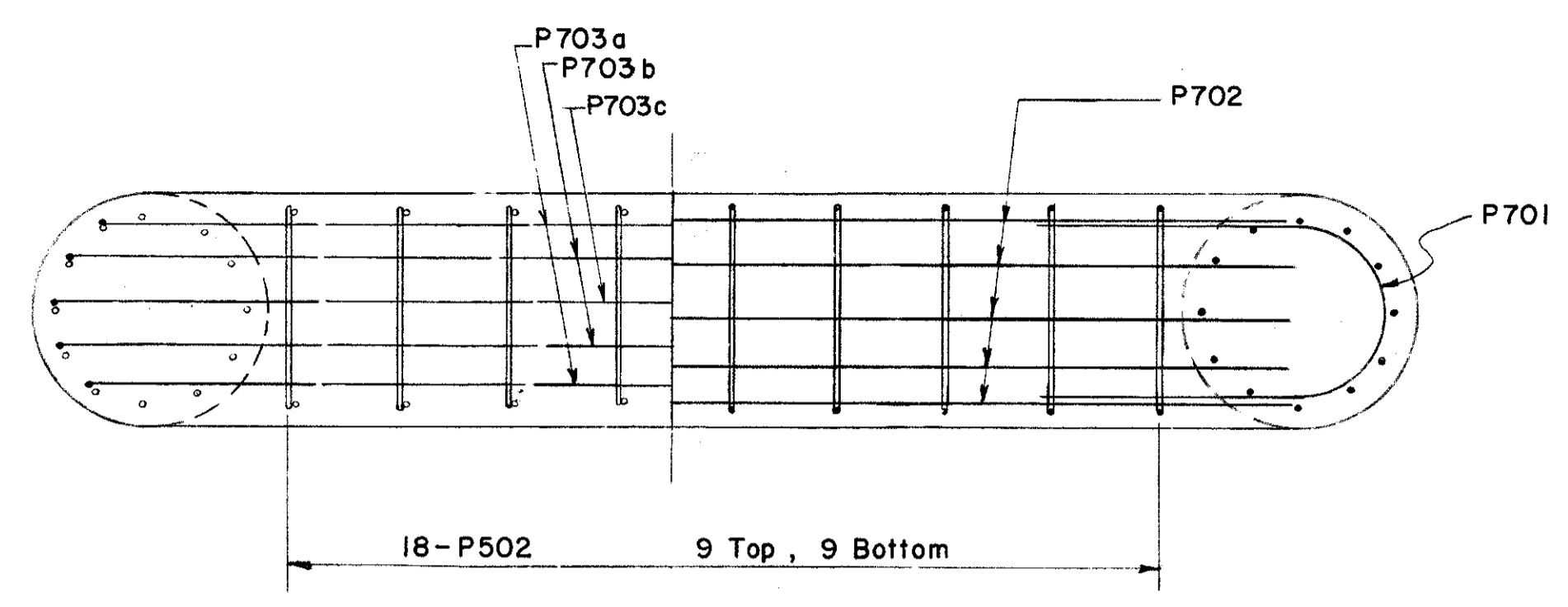
FED. RD. DIVISION	STATE	PROJECT	
2	OHIO		

245  
277

LAKE COUNTY  
SEC. LAK-1-6.97



CAP PLAN



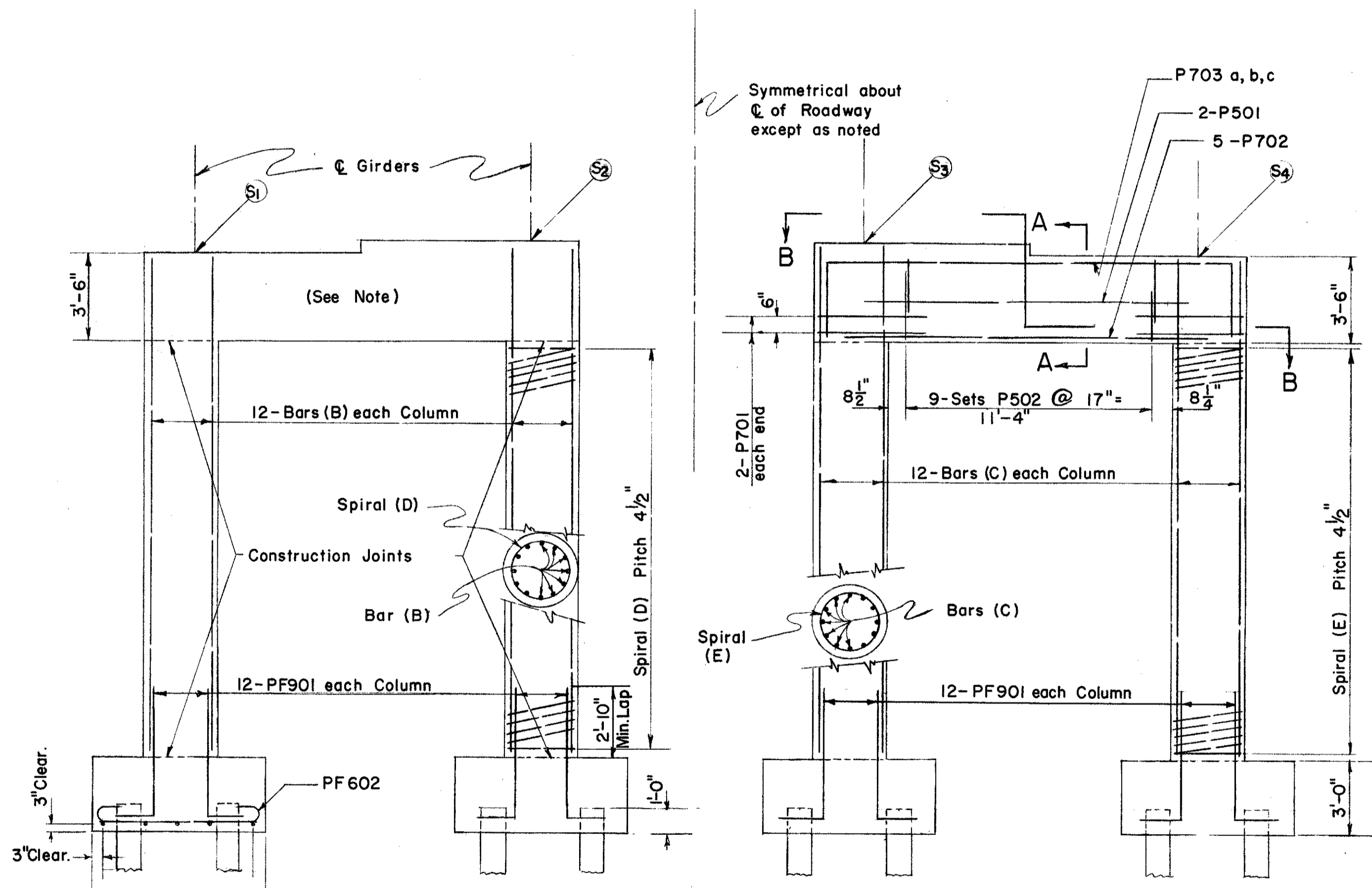
SECTION B-B

NOTES:  
Reinforcing Steel is identical in all piers except as noted.

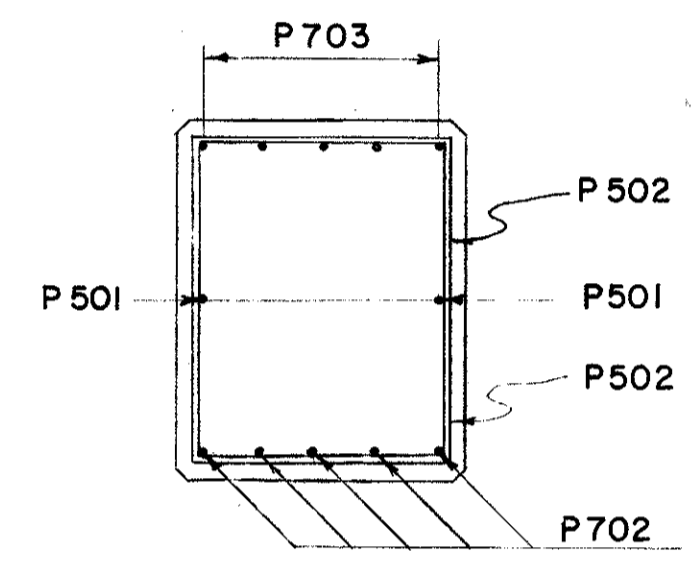
Special care shall be taken in placing the P703 Bars in the cap on Pier #3 so they do not interfere with the drilling of anchor bolt holes.

Reinforcing Steel shall have a minimum of 2" of cover from all faces except as otherwise shown.

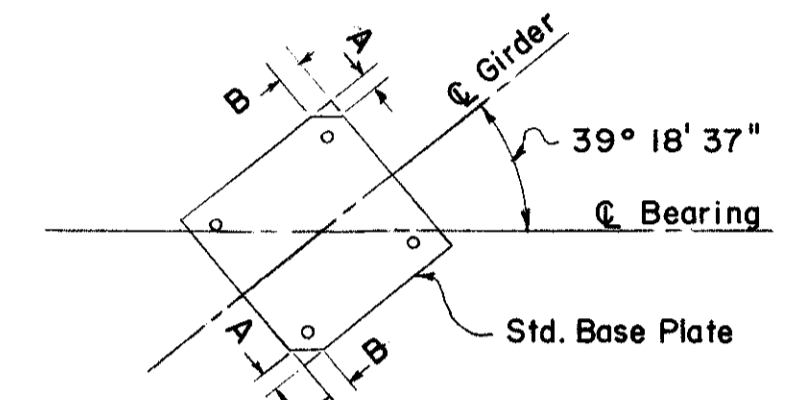
Piles; 12-BP-53; shall be driven to a minimum bearing capacity of 40 tons per pile.



PIER ELEVATION

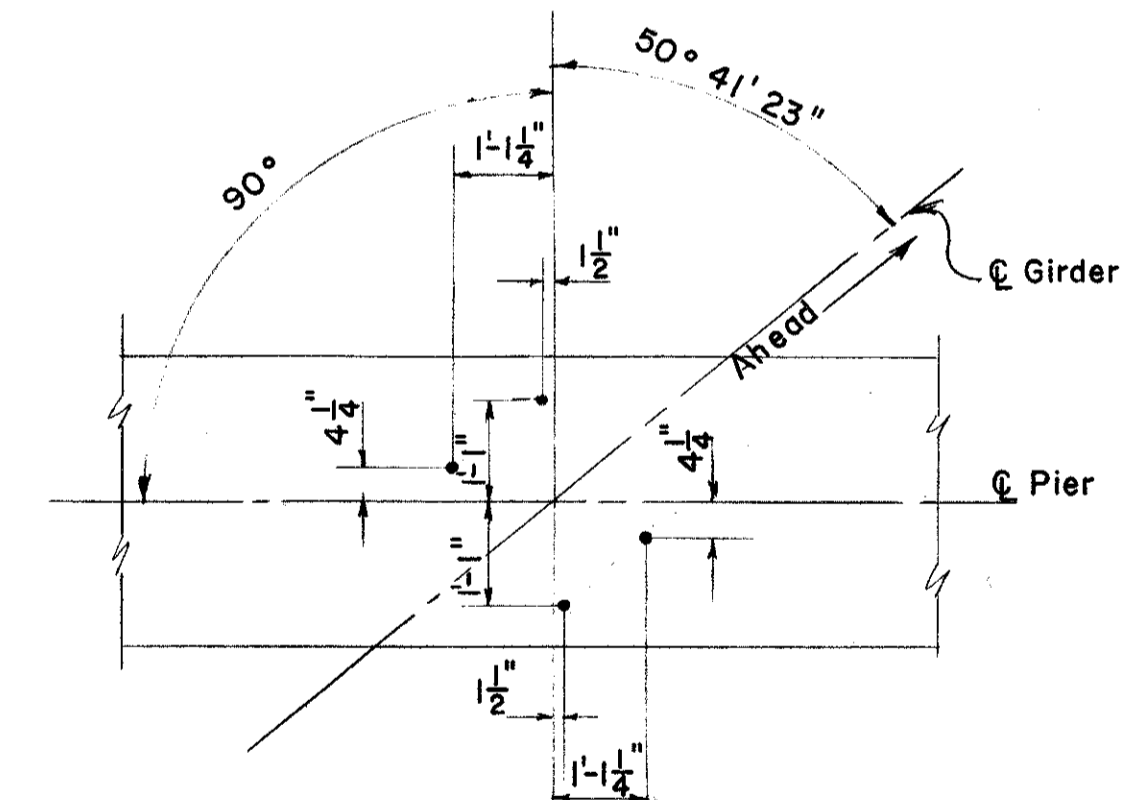


SECTION A-A

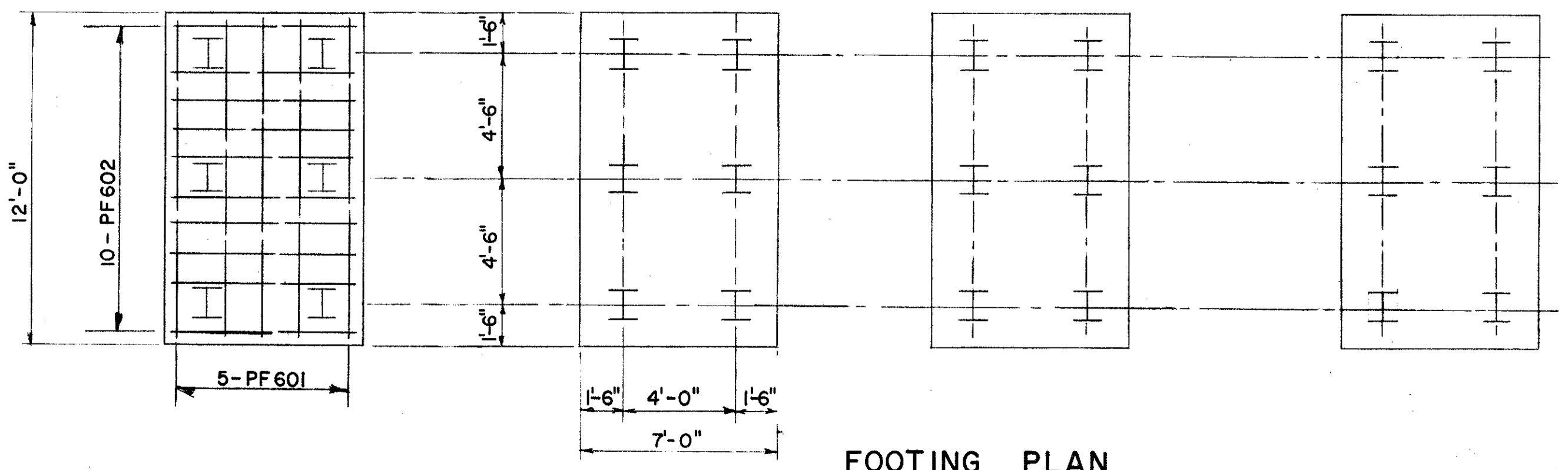


BASE PLATE DETAIL

Bearing Type	Dimension "A"	Dimension "B"
R-300	2 3/4"	3 1/2"
B-275	2"	2 3/8"
R-275	2"	2 3/8"



ANCHOR BOLT LAYOUT PIER #3



FOOTING PLAN

Location	Station *	S <sub>1</sub>	S <sub>2</sub>	S <sub>3</sub>	S <sub>4</sub>	F	Bar B	Bar C	Spiral D	Spiral E
Pier #1	26 + 91.09	782.53	782.85	783.00	783.00	761.00	P 901	P 902	SP 401	SP 402
Pier #2	28 + 04.59	783.55	783.73	783.75	783.61	759.50	P 903	P 903	SP 403	SP 403
Pier #3	29 + 18.09	783.37	783.41	783.30	783.03	758.50	P 904	P 905	SP 404	SP 405
Pier #4	30 + 31.59	781.73	781.65	781.40	781.00	757.50	P 906	P 907	SP 406	SP 407
Pier #5	31 + 45.09	779.22	779.10	778.83	778.42	757.50	P 901	P 908	SP 408	SP 409

SEC. C-31

PREPARED BY  
CAPITOL ENGINEERING ASSOCIATES, DILLSBURG, PA.  
FOR

STATE OF OHIO  
DEPARTMENT OF HIGHWAYS  
DIVISION OF DESIGN AND CONSTRUCTION  
BUREAU OF BRIDGES

PIERS  
BRIDGE NO. LAK-1-0906  
S.R.1 UNDER CHILLICOTHE ROAD  
LAKE COUNTY  
STA. 123 + 07.00

DESIGNED	DRAWN	TRACED	CHECKED	REVIEWED DATE	REVISED
H. M.	J. T. H.		DRT		