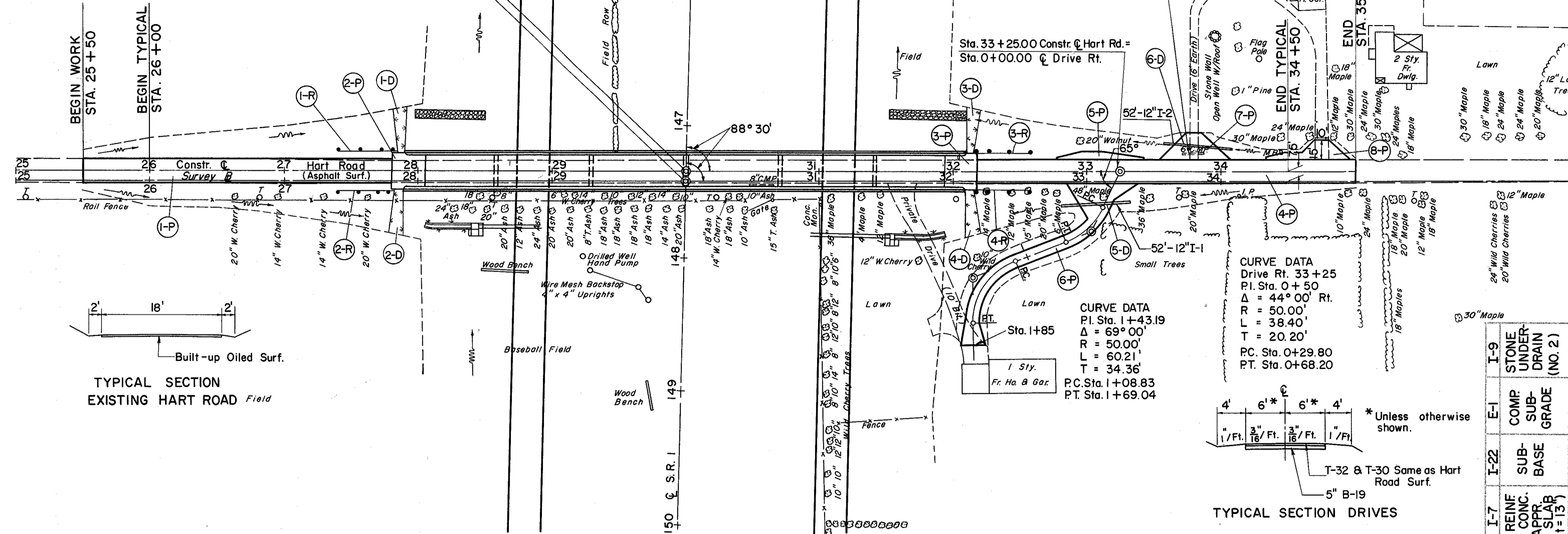


MICROFILMED
JUN 27 1965

Sta. 30+00.20 Constr. C Hart Road =
Sta. 147+34.15 C S.R. I
Sta. 30+00.00 Survey B Hart Road =
Sta. 147+41.65 C S.R. I

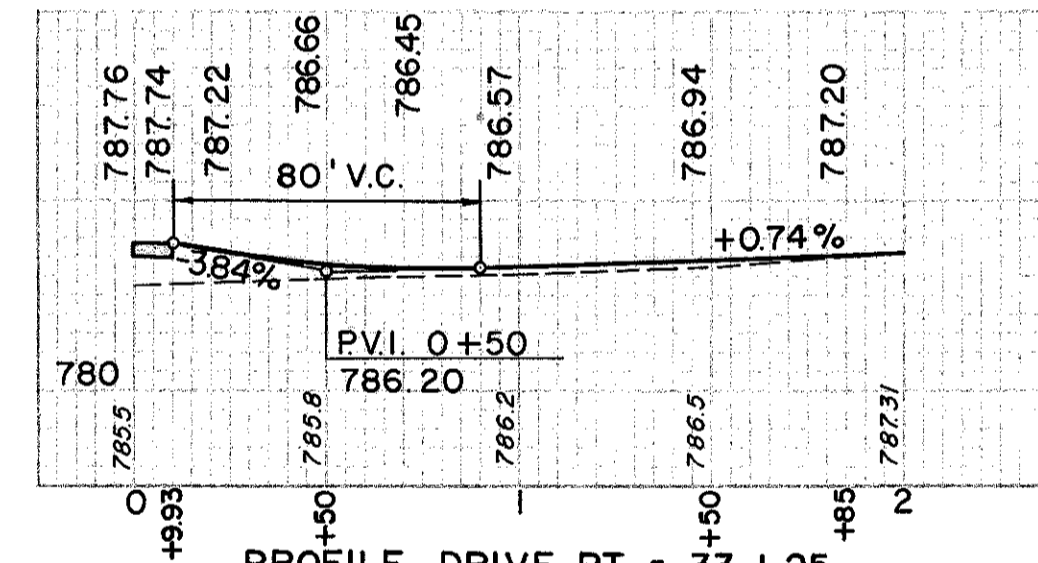
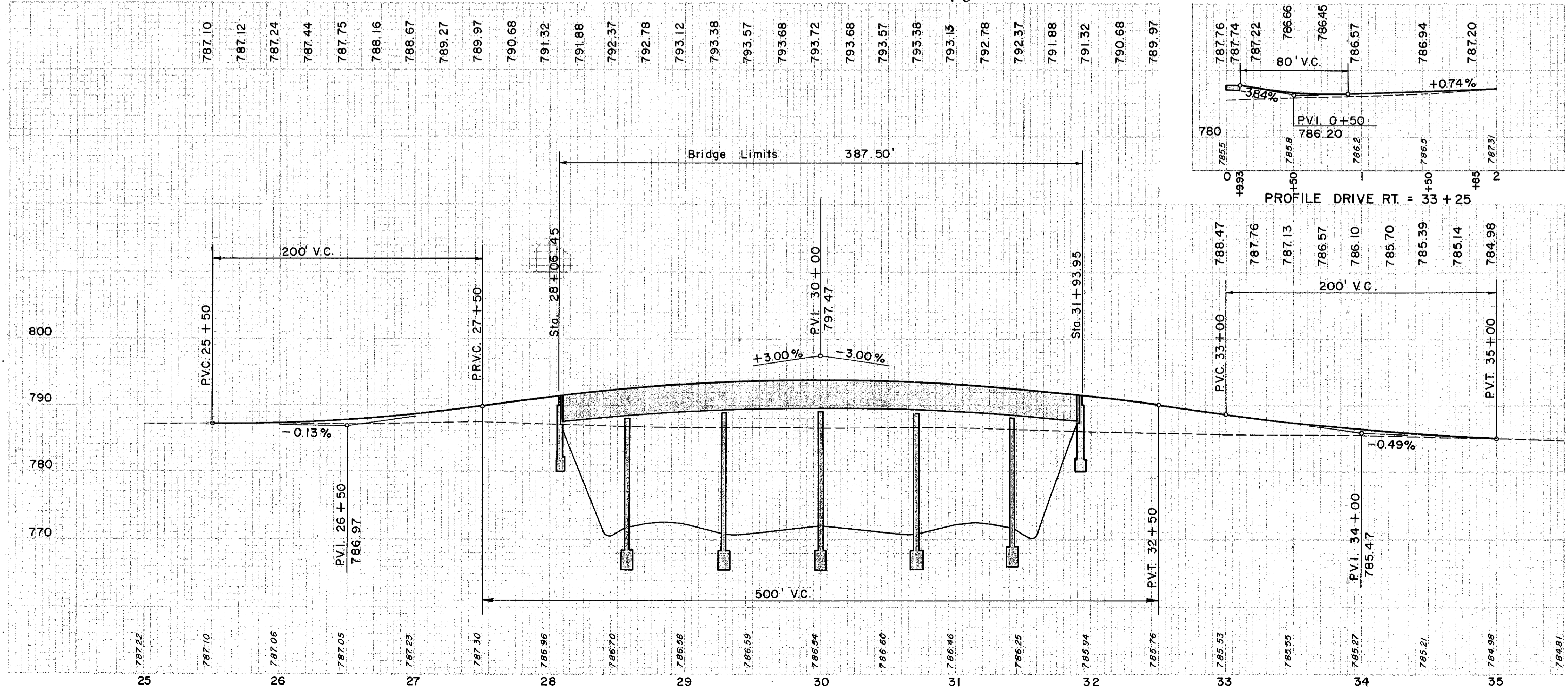
FOR DETAILS OF STRUCTURE
NO. LAK-1-0950 SEE
SHEETS 256 - 261

LAKE COUNTY
LAK-1-6.97



TYPICAL SECTION
EXISTING HART ROAD

TYPICAL SECTION DRIVES



(P) PAVEMENT

REF. NO.	STATION	SEAL COAT	ROAD MIX	ROAD MIX MATL.	SEAL COAT BIT MATL.	#46 AGGR. FOR ROAD MIX	#6 AGGR. FOR SEAL COAT	#6 AGGR. FOR CHOKO	T-30 BIT. PRIME COAT	B-19 AGGR. BASE COURSE	I-7 REINF. CONC. APPR. SLAB	I-22 SUB-BASE	E-1 COMP. SUB-GRADE	I-9 STONE UNDER-DRAIN
1-P	25+50													
2-P	27+81.45													
3-P	31+93.95													
4-P	32+18.95													
5-P	33+05													
6-P	33+25													
7-P	33+80													
8-P	34+75													
TOTALS														

(R) ROADWAY

REF. NO.	STATION	FROM	TO	SIDE	STATION	TYPE	CABLES
1-R	27+42	27+42	27+90	LT.	48		
2-R	27+42	27+90	27+90	RT.	48		
3-R	32+10	32+10	32+58	LT.	48		
4-R	32+10	32+58	32+58	RT.	48		

(D) DRAINAGE

REF. NO.	STATION	FROM	TO	TYPE	SIZE	LENGTH
1-D	27+90	27+90	35			
2-D	27+90	27+90	35			
3-D	32+15	32+15	35			
4-D	32+15	32+15	40			
5-D	32+81	33+33	52			
6-D	33+56	34+08	52			

EXCAVATION = 719 C.Y.
EMBANKMENT = 1,297 C.Y.
EMBANKMENT * 18 = 1,530 C.Y.