

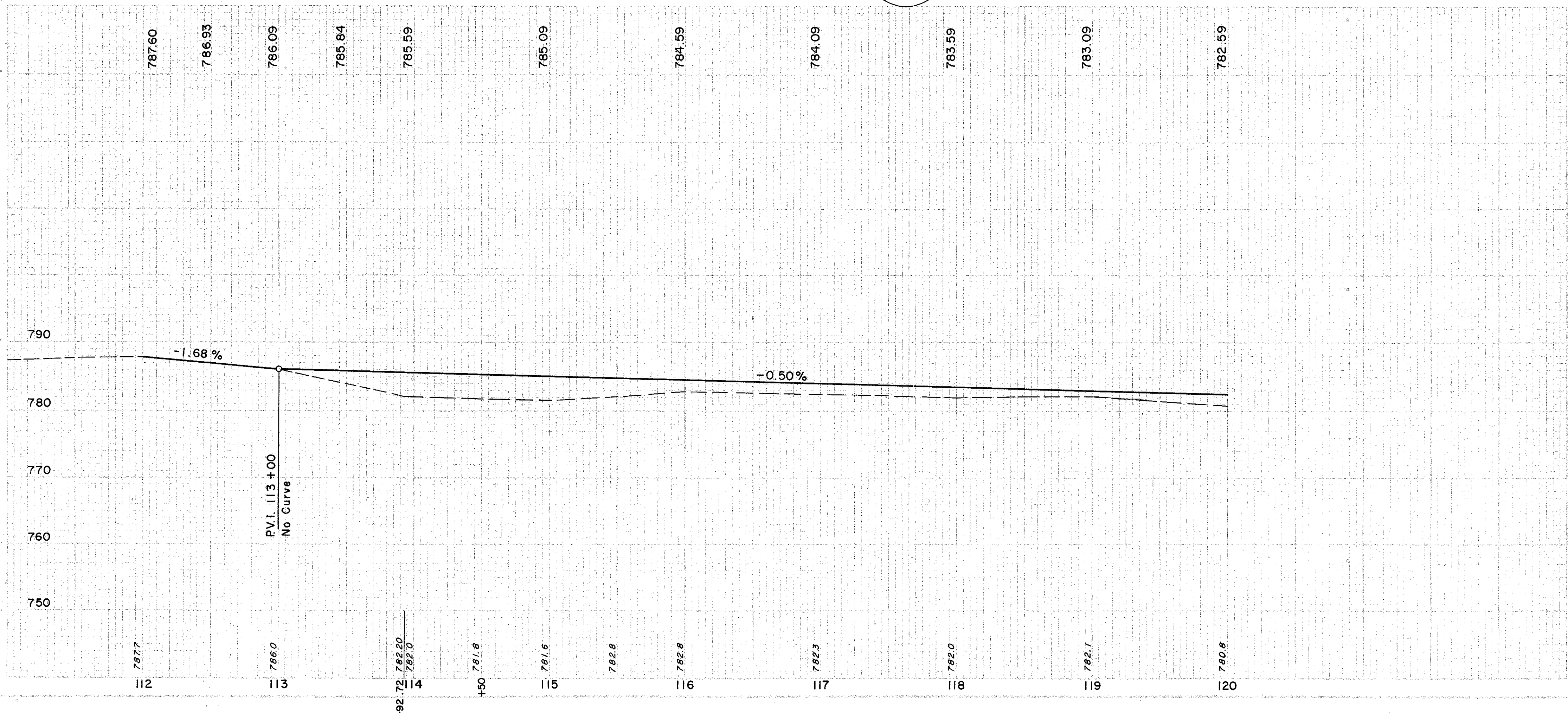
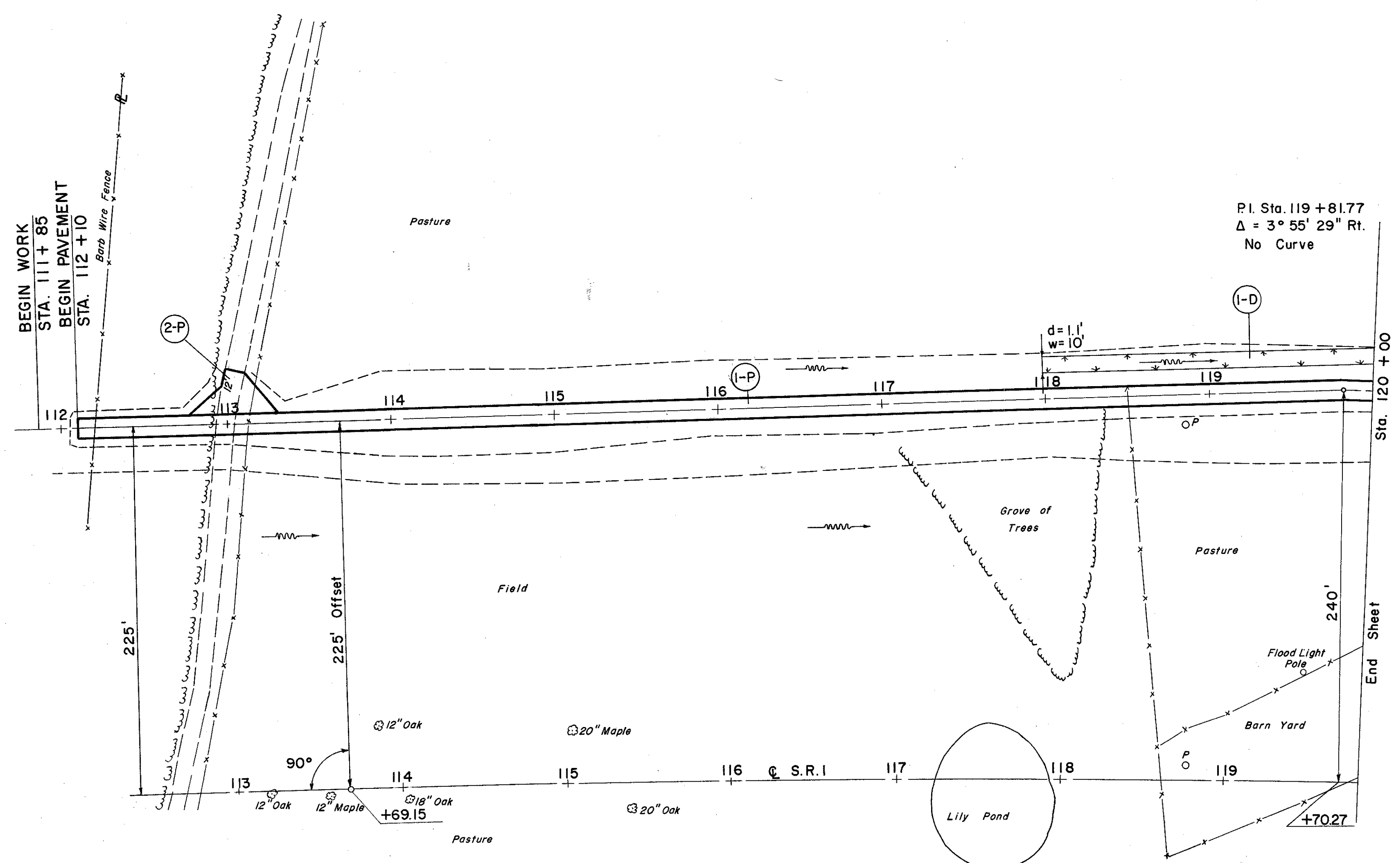
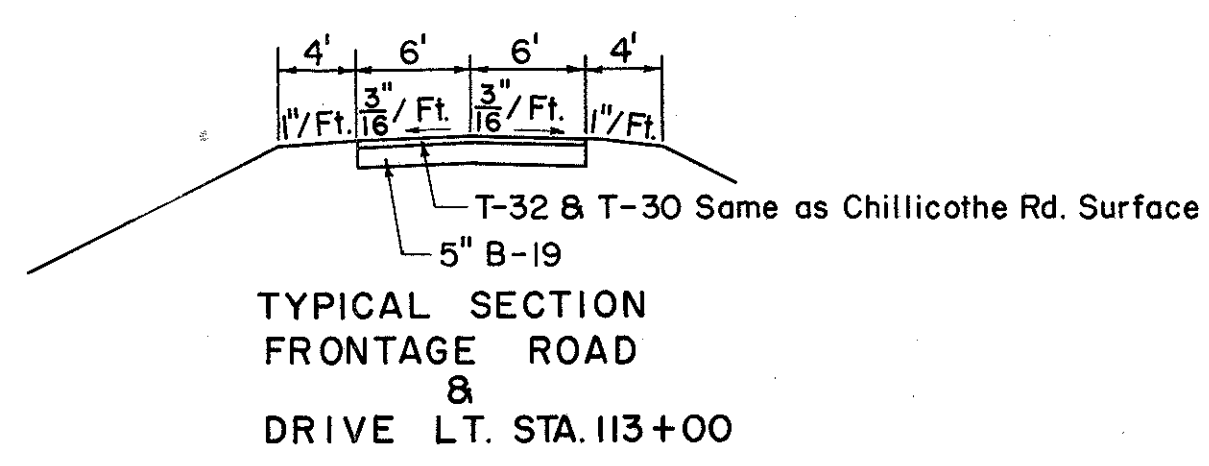
LAKE COUNTY  
LAK - I-6.97

(P) PAVEMENT

REF. NO.	STATION	SIDE	ROAD MIX BIT. MATL.		SEAL COAT BIT. MATL.		T-32	T-30	B-19	E-1
			GAL.	GAL.	# 46 AGGR. FOR ROAD MIX	# 6 AGGR. FOR CHOKE	# 6 AGGR. FOR SEAL COAT	BIT. PRIME COAT	AGGR. BASE COURSE	COMPACT. SUBGR.
1-P	112+10	120+00	1159	263	59	4	8	421	146	1053
2-P	113+00	LT.	89	20	5	1	32	11	81	
TOTAL			1248	283	64	4	9	453	157	1134

(D) DRAINAGE

REF. NO.	STATION	SIDE	L-10 SODDING	
			S.Y.	S.Y.
1-D	118+00	120+00	LT.	222



EXCAVATION	=	386 C.Y.
EMBANKMENT	=	1,318 C.Y.
SPREADSHEET	=	18" = 1,555 C.Y.