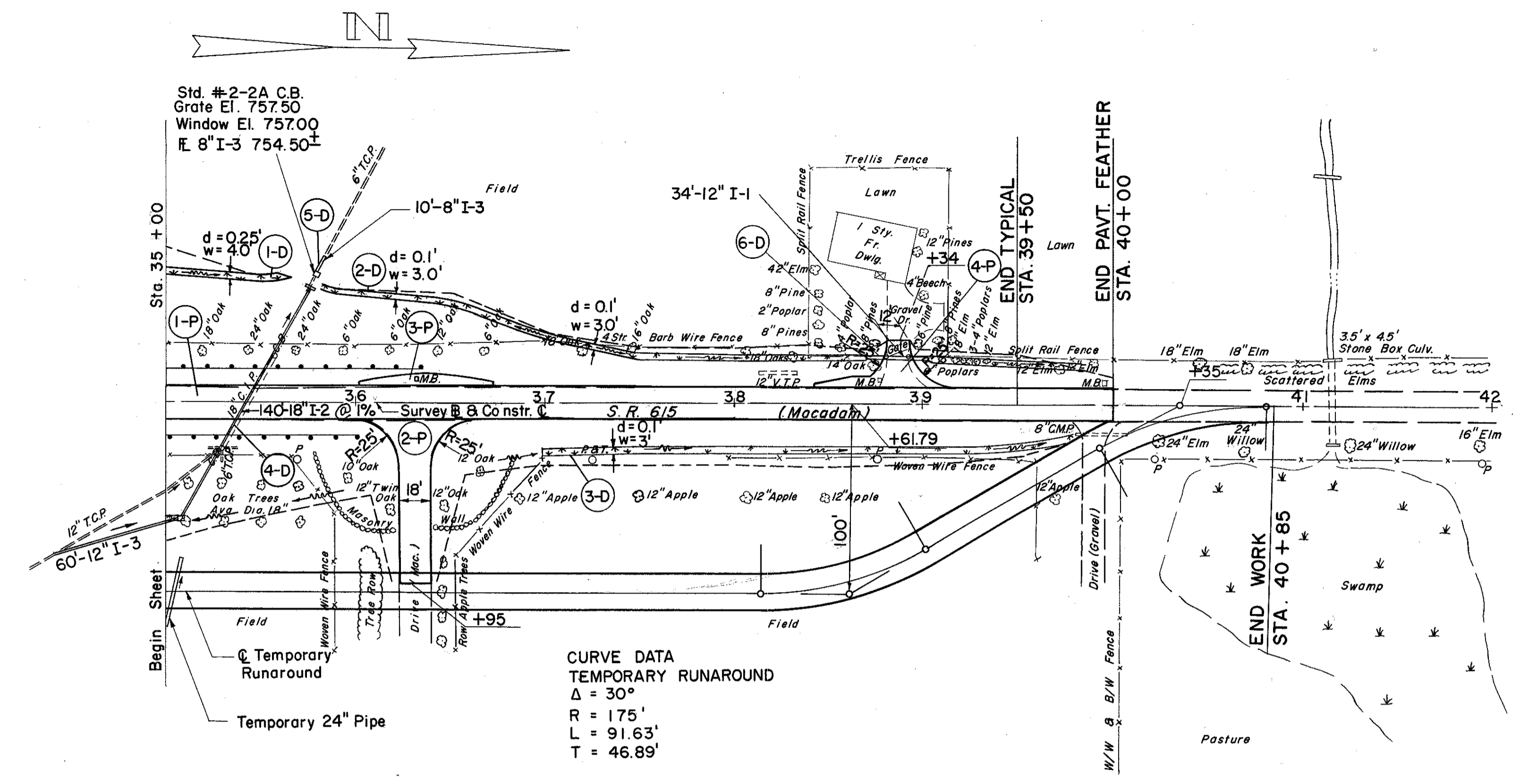


LAKE COUNTY
LAK-I-6.97



CURVE DATA
TEMPORARY RUNAROUND
Δ = 30°
R = 175'
L = 91.63'
T = 46.89'

Ⓓ DRAINAGE

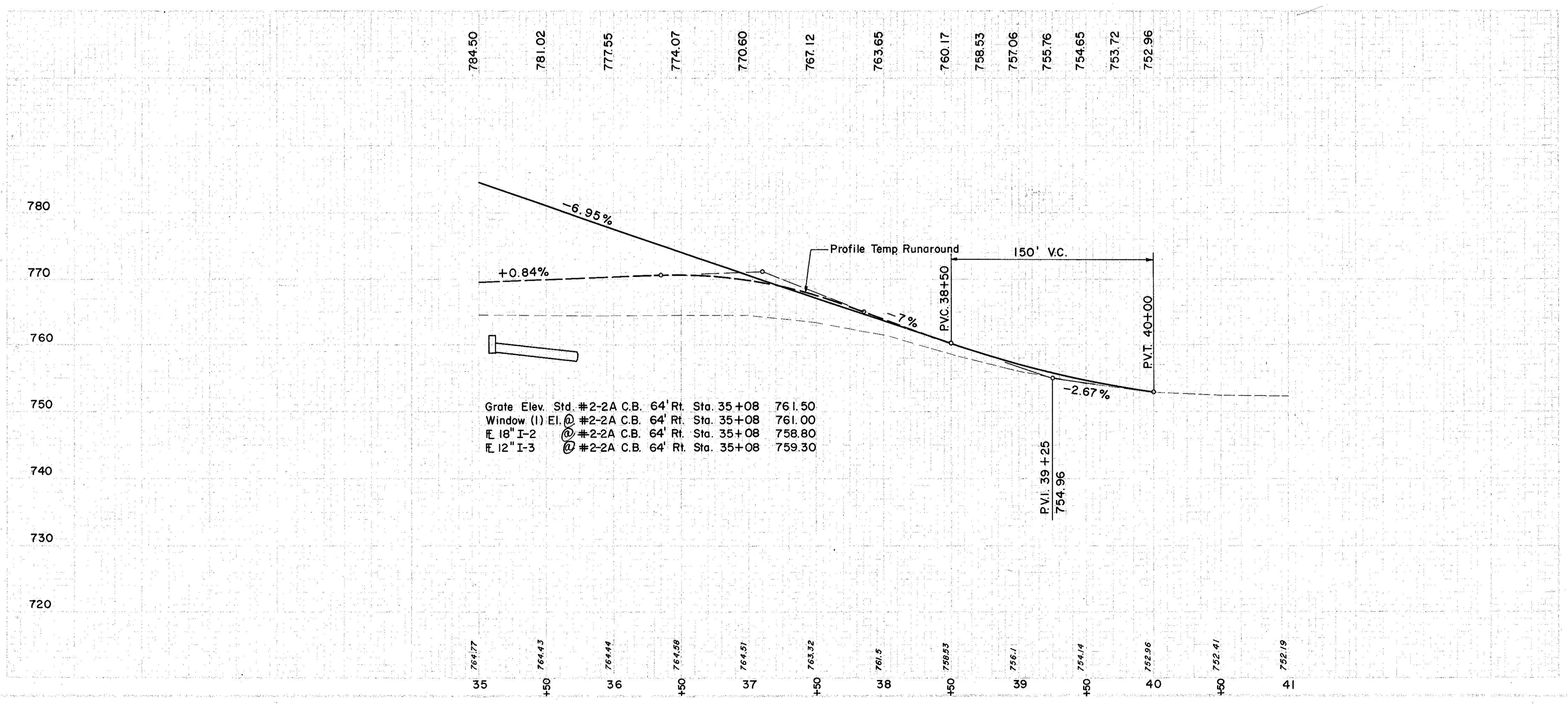
REF. NO.	STATION	SIDE	CLASS "A" STM. SWR. UNDER PAVT. SEC. M-6.5 (b) OR M-6.8 (b)	ROADWAY DRAINAGE		I-8 STD. #2-2A CATCH BASIN	L-10 SODDING	S-1 CONC. FOR STRUCT. CLASS "E"	E-2 EXC. FOR STRUCT.	I-1 12" PIPE FOR DRIVEWAYS SEC. M-6.4 (a)
				L.F.	8"					
I-D	35+00	35+66	LT.							
2-D	35+82	39+80	RT.							
3-D	37+00	39+80	RT.							
4-D	34+50	35+74	LT.	140	60	1		0.30	2	
5-D	35+80		LT.			1				
6-D	39+00		LT.							34

Ⓔ PAVEMENT

REF. NO.	STATION	SIDE	B-19 AGGR. BASE COURSE	B-35 ASPH. CONC. LEVELING COURSE	B-35 ASPH. CONC. BASE COURSE	I-22 SUB-BASE	T-35 ASPH. CONC. SURFACE COURSE	T-30 BIT. PRIME COAT	E-1 COMP. SUB-GRADE	I-9 STONE UNDER DRAIN (NO. 2)
I-P	35+00	40+00	469	35	76	370	35	400	1000	214
2-P	36+30		28				8	81	202	
3-P	36+00	36+70	4				1	12	31	
4-P	38+90		9				3	29	72	
TOTALS			510	35	76	370	47	522	1305	214

Ⓔ ROADWAY

REF. NO.	STATION		SIDE	I-15 GUARD RAIL, STEEL BEAM STD. TYPE (SHALLOW)
	FROM	TO		
1-R	34+98	36+35±	LT.	137.5
2-R	35+04	36+04±	RT.	100.0
TOTAL				237.5



Grate Elev. Std. #2-2A C.B. 64' Rt. Sta. 35+08 761.50
Window (I) El. #2-2A C.B. 64' Rt. Sta. 35+08 761.00
El. 18" I-2 #2-2A C.B. 64' Rt. Sta. 35+08 758.80
El. 12" I-3 #2-2A C.B. 64' Rt. Sta. 35+08 759.30

Excavation = 385 C.Y.
Embankment = 7789 C.Y.
Ditch = 18" = 9191 C.Y.