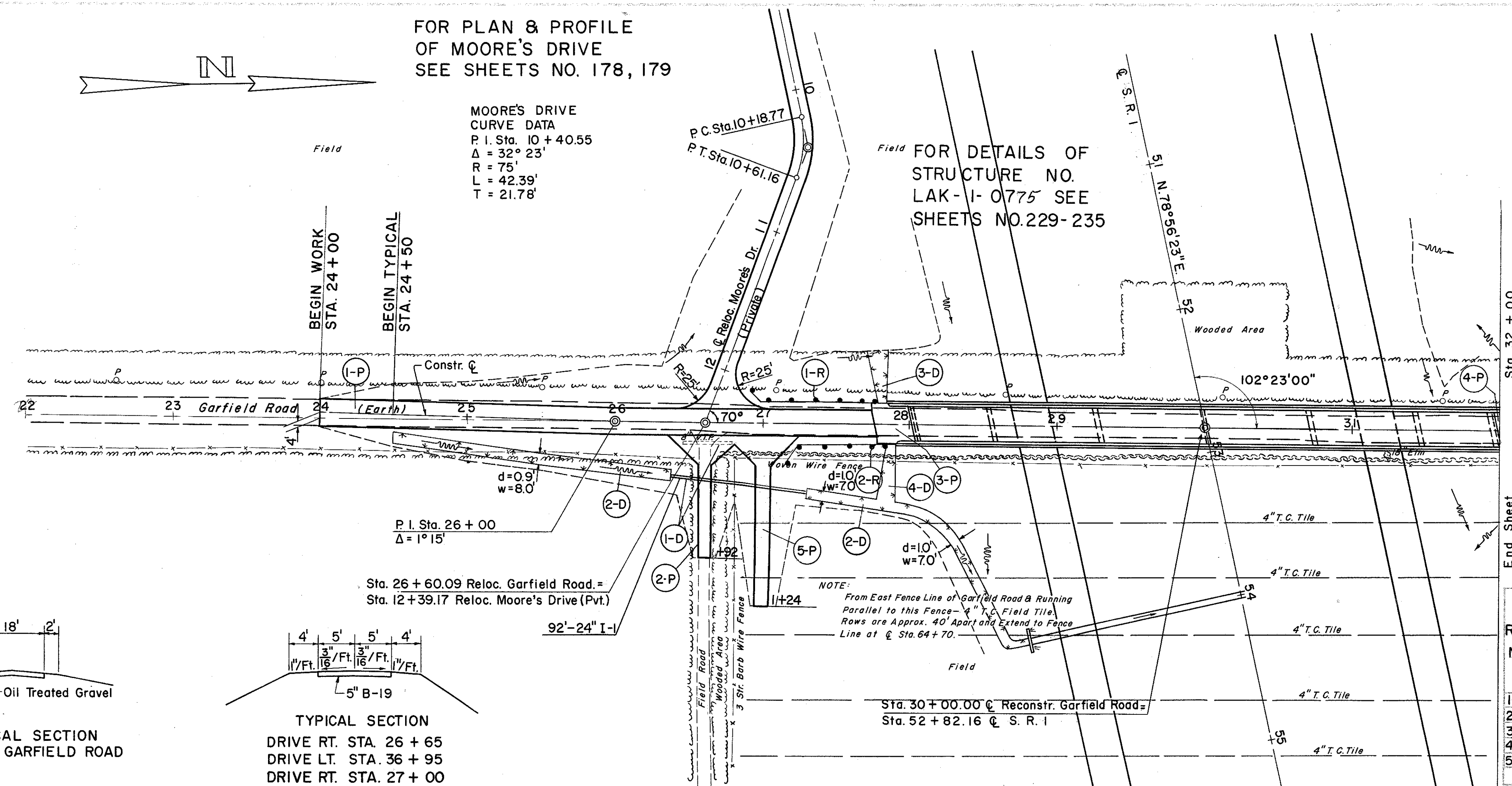


MICROFILMED
JUN 27 1985

FOR PLAN & PROFILE
OF MOORE'S DRIVE
SEE SHEETS NO. 178, 179

MOORE'S DRIVE
CURVE DATA
P.I. Sta. 10+40.55
 $\Delta = 32^\circ 23'$
R = 75'
L = 42.39'
T = 21.78'

LAKE COUNTY
LAK-I-6.97



(D) DRAINAGE

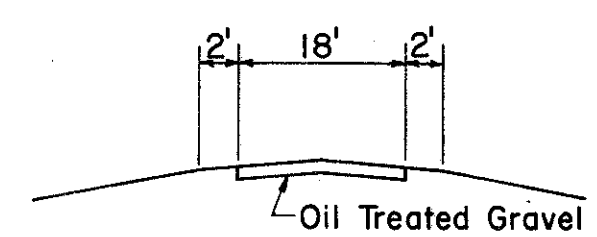
REF. NO.	STATION	SIDE	I-1	L-10	E-12
			24" PIPE FOR DRIVEWAYS SEC. M-64(a) L.F.	SODDING FOR SPECIAL BERM & SLOPE PROTECT. S.Y.	PIPE REMOVED, 15" & UNDER L.F.
I-D	26+50	RT.	92		34
2-D	24+50	RT.		224	
3-D	27+81	LT.			40
4-D	27+88	RT.			50

(R) ROADWAY

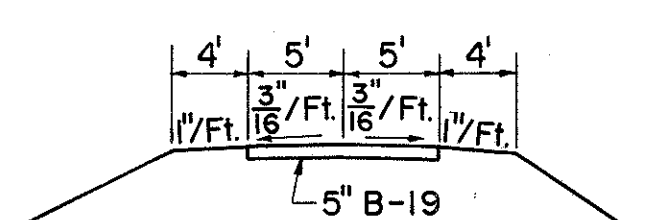
REF. NO.	STATION		SIDE	I-15 GUARD RAIL, WIRE CABLE TYPE (3 CABLES) L.F.
	FROM	TO		
I-R	26+90	27+85	LT.	96
2-R	27+20	27+90	RT.	80

(P) PAVEMENT

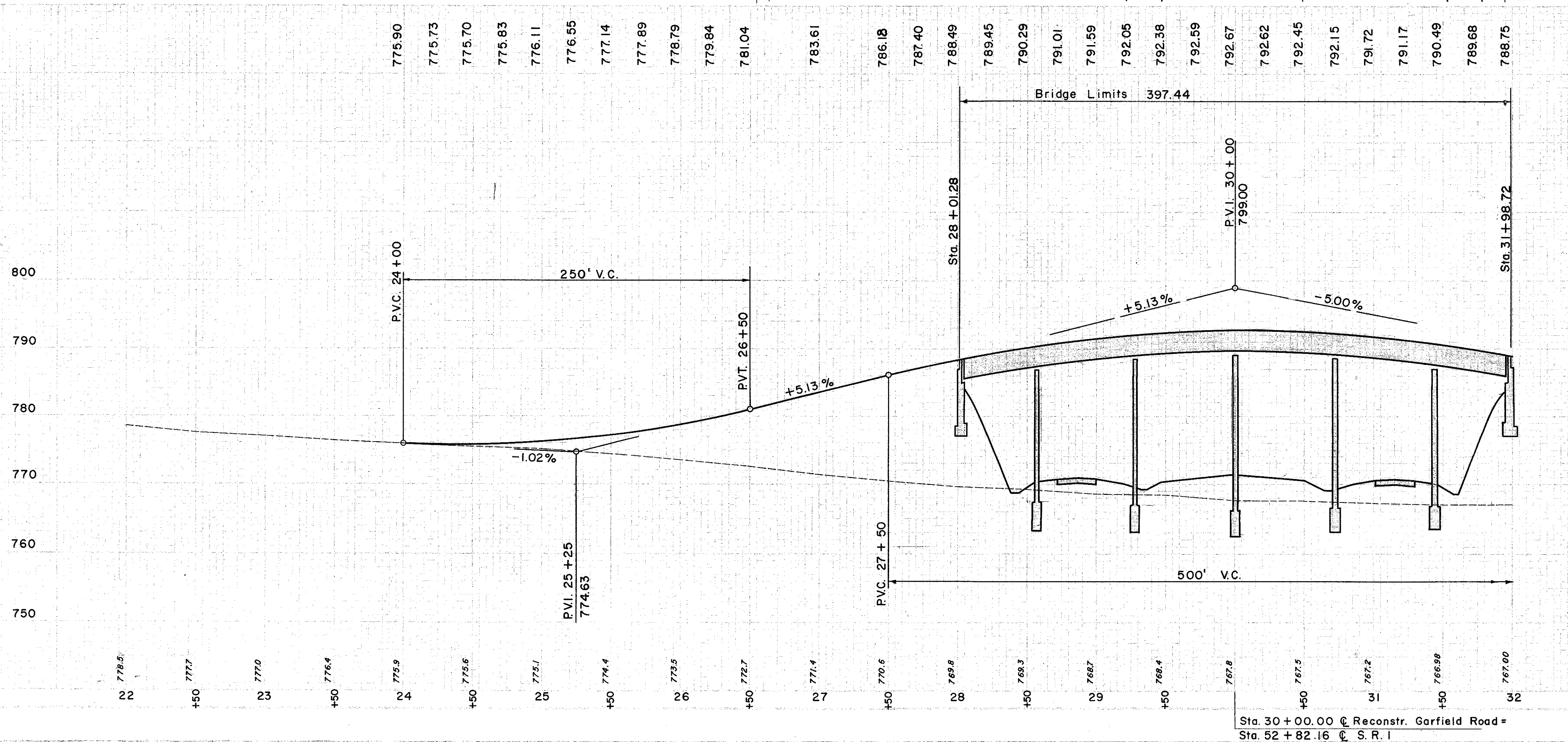
REF. NO.	STATION	SIDE	ROAD MIX BIT. MATL.	SEAL COAT BIT. MATL.	T-32 #46 AGGR. FOR ROAD MIX	#6 AGGR. FOR CHOKE	#6 AGGR. FOR SEAL COAT	T-30 BIT. PRIME COAT	B-19 AGGR. BASE COURSE	I-7 REINF. CONC. APPR. SLAB (+13")	I-22 SUB-BASE	E-1 COMPACT. SUBGR.	I-9 STONE UNDER DRAIN (NO. 2)
			GAL.	188	42	C.Y.	6	GAL.	C.Y.	S.Y.	C.Y.	S.Y.	L.F.
I-P	24+00	RT.	828			3		301	110		93	753	119
2-P	26+65	RT.							19			137	
3-P	27+76.28	RT.								67	7	67	
4-P	31+98.72	RT.								67	7	67	
5-P	27+00	RT.						23				168	
TOTALS			828	188	42	3	6	301	152	134	107	1192	119



TYPICAL SECTION
EXISTING GARFIELD ROAD



TYPICAL SECTION
DRIVE RT. STA. 26+65
DRIVE LT. STA. 36+95
DRIVE RT. STA. 27+00



EXCAVATION 255 CY.
EMBANKMENT 8,321 CY.
TOTAL 8,576 CY.