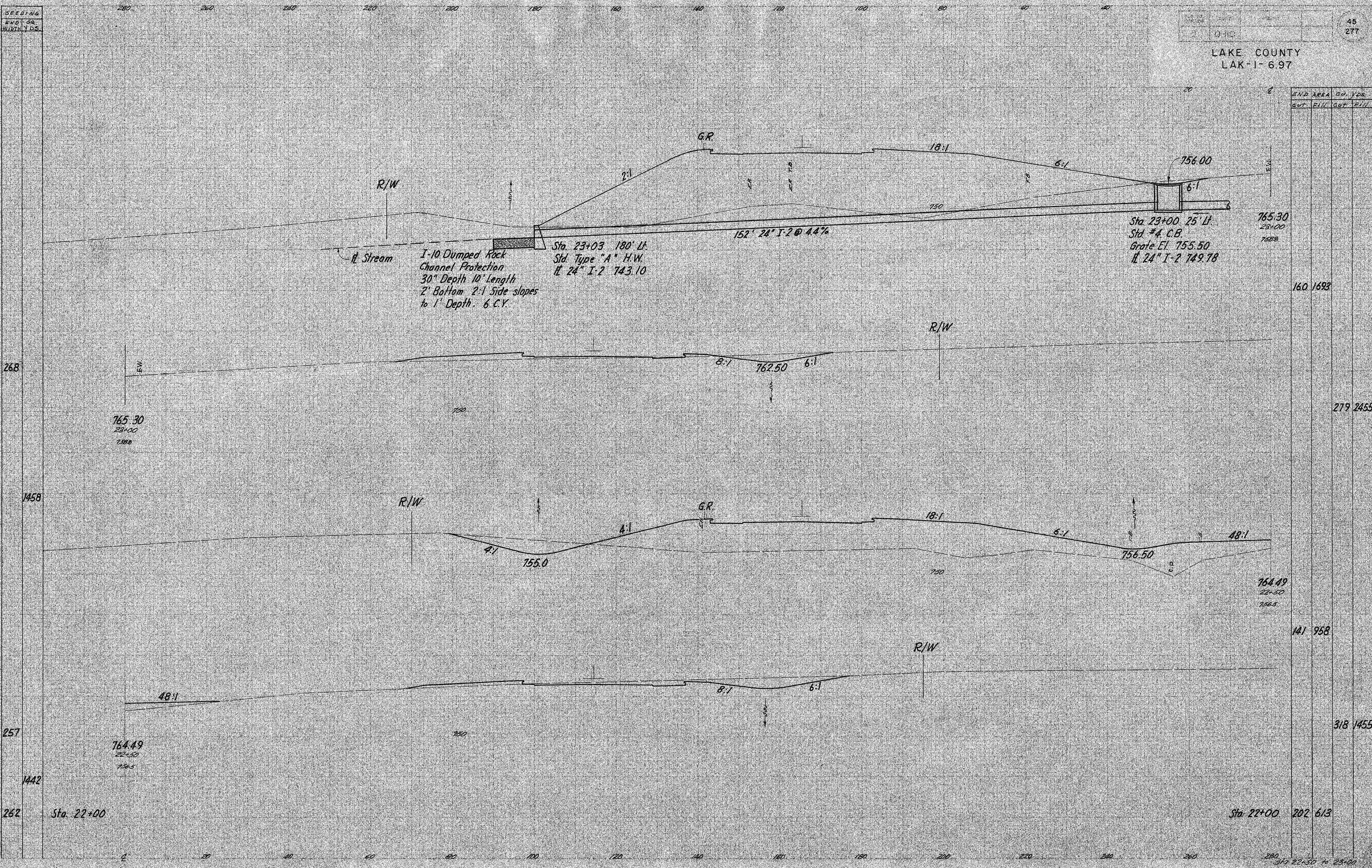


SEEDING  
 END SQ.  
 WIDTH YDS.

45  
 277

LAKE COUNTY  
 LAK-1-6.97



1-10 Dumped Rock  
 Channel Protection  
 30" Depth 10' Length  
 2' Bottom 2:1 Side slopes  
 to 1' Depth. 6 C.Y.

Sta. 23+03 180' Lt.  
 Std. Type "A" H.W.  
 # 24" I-2 743.10

Sta. 23+00 25' Lt.  
 Std. #4 C.B.  
 Grate El. 755.50  
 # 24" I-2 749.78

END AREA CU. YDS.			
CUT	FILL	CUT	FILL

765.30  
 23+00  
 7588

160.1693

279.2455

764.49  
 22+50  
 7565

141.958

318.1455

Sta. 22+00 202.613

Sta. 22+50 + 23+00