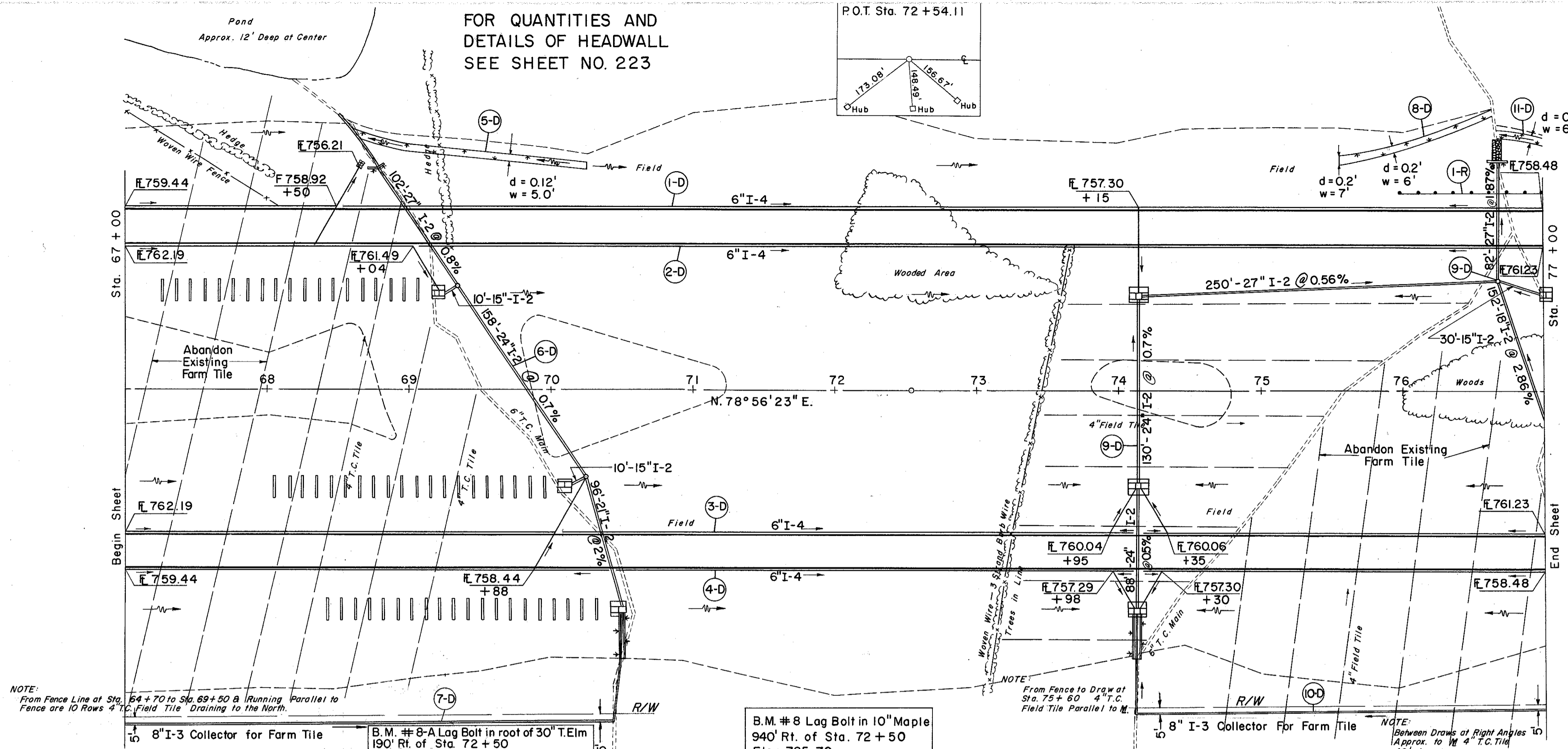


FOR QUANTITIES AND
DETAILS OF HEADWALL
SEE SHEET NO. 223

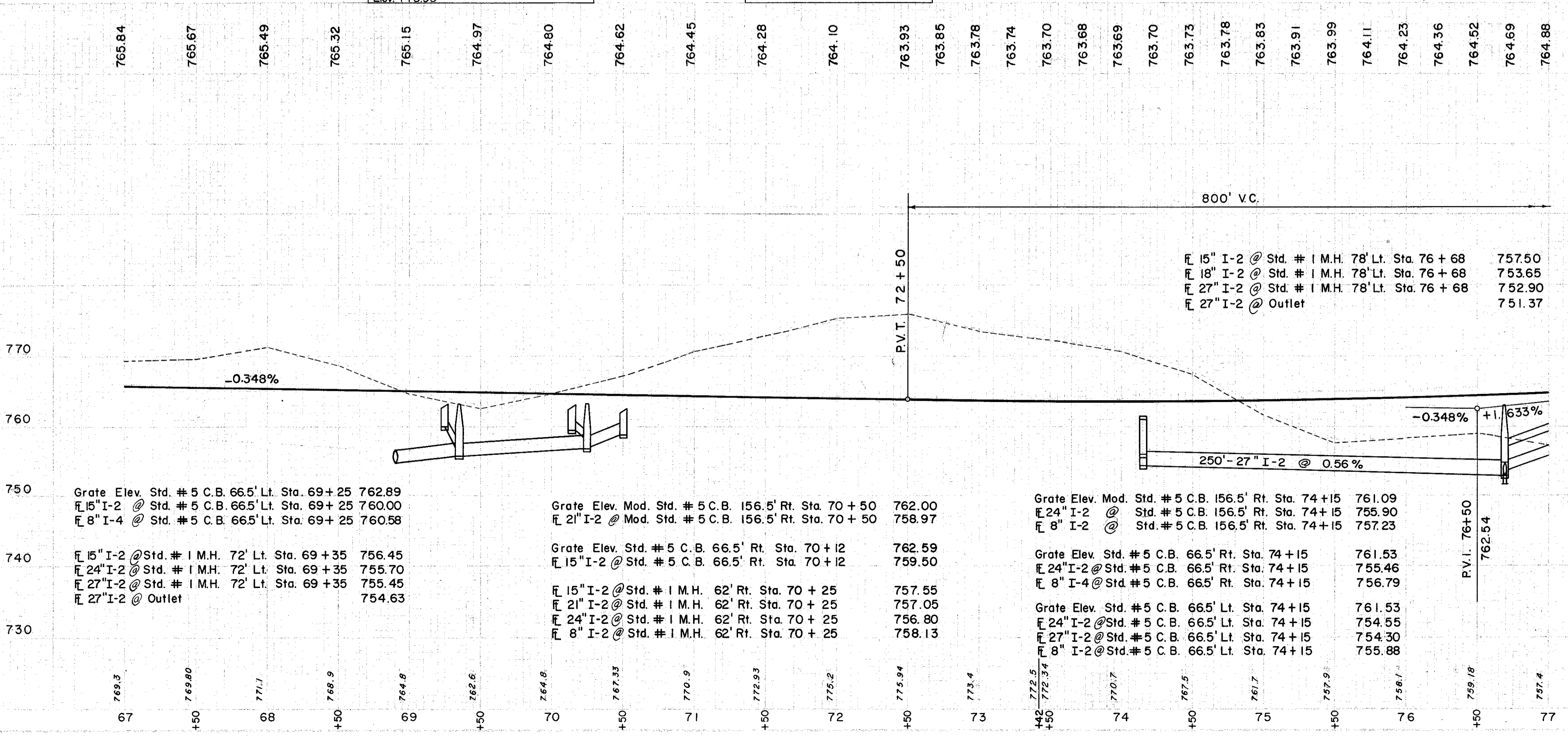
P.O.T. Sta. 72 + 54.11



NOTE: From Fence Line at Sta. 64+70 to Sta. 69+50 a Running Parallel to Field Tile Draining to the North.

NOTE: From Fence to Draw at Sta. 75+50 a 4\"/>

NOTE: Between Draws at Right Angles to Approx. to W 4\"/>



67	765.3	Grate Elev. Std. # 5 C.B. 66.5' Lt. Sta. 69+25	762.89
+50	765.80	F 15" I-2 @ Std. # 5 C.B. 66.5' Lt. Sta. 69+25	760.00
68	771.1	F 8" I-4 @ Std. # 5 C.B. 66.5' Lt. Sta. 69+25	760.58
+50	768.9	F 15" I-2 @ Std. # 1 M.H. 72' Lt. Sta. 69+35	756.45
69	764.8	F 24" I-2 @ Std. # 1 M.H. 72' Lt. Sta. 69+35	755.70
+50	762.6	F 27" I-2 @ Std. # 1 M.H. 72' Lt. Sta. 69+35	755.45
70	764.8	F 27" I-2 @ Outlet	754.63

70	762.59	Grate Elev. Mod. Std. # 5 C.B. 156.5' Rt. Sta. 70+50	762.00
+50	772.93	F 21" I-2 @ Mod. Std. # 5 C.B. 156.5' Rt. Sta. 70+50	759.97
71	770.9	Grate Elev. Std. # 5 C.B. 66.5' Rt. Sta. 70+12	762.59
+50	775.93	F 15" I-2 @ Std. # 5 C.B. 66.5' Rt. Sta. 70+12	759.50
72	775.2	F 15" I-2 @ Std. # 1 M.H. 62' Rt. Sta. 70+25	757.55
+50	772.93	F 21" I-2 @ Std. # 1 M.H. 62' Rt. Sta. 70+25	757.05
73	773.4	F 24" I-2 @ Std. # 1 M.H. 62' Rt. Sta. 70+25	756.80
+50	775.93	F 8" I-2 @ Std. # 1 M.H. 62' Rt. Sta. 70+25	758.13

74	761.09	Grate Elev. Mod. Std. # 5 C.B. 156.5' Rt. Sta. 74+15	761.09
+50	755.90	F 24" I-2 @ Std. # 5 C.B. 156.5' Rt. Sta. 74+15	755.90
75	756.79	F 8" I-2 @ Std. # 5 C.B. 156.5' Rt. Sta. 74+15	757.23
+50	761.53	Grate Elev. Std. # 5 C.B. 66.5' Lt. Sta. 74+15	761.53
76	754.55	F 24" I-2 @ Std. # 5 C.B. 66.5' Lt. Sta. 74+15	754.55
+50	754.30	F 27" I-2 @ Std. # 5 C.B. 66.5' Lt. Sta. 74+15	754.30
77	755.88	F 8" I-2 @ Std. # 5 C.B. 66.5' Lt. Sta. 74+15	755.88

REF. NO.	STATION	ROADWAY		STATION	SIDE	I-15 GUARD RAIL STEEL BEAM (STD. TYPE)	DRAINAGE		I-8 MOD. STD. # 5 CATCH BASIN	I-8 STD. # 5 CATCH BASIN	4'x8'x8' TEE	8" TEE	6" x 8" DOUBLE TEE SEC. M-65 (OR M-6.8(b))	8" WYE SEC. M-65 (OR M-6.8(b))	INCREASER	6" x 8" TEE	10" OUTLET FOR ROADWAY DRAINAGE	I-3 8" OUTLET FOR ROADWAY DRAINAGE	I-10 I-14 DUMPED ROCK CHANNEL PROTECTION	I-10 I-14 PAVED CUTTER	SODDING STRUCT. CLASS C.Y.	CONC. FOR REINF. STRUCT. FOR AGGR. STRUCT. C.Y.	S-4 S-29 E-2 EXC. FOR STRUCT. C.Y.	
		FROM	TO				L.F.	L.F.																S.Y.
I-D	67+00	77+00	LT.																					
2-D	67+00	77+00	LT.																					
3-D	67+00	77+00	RT.																					
4-D	67+00	77+00	RT.																					
5-D	67+15	70+25	LT.																					
7-D	67+00	70+50	RT.																					
8-D	75+50	76+65	LT.																					
10-D	74+15	77+00	RT.																					
I-D	76+65	77+00	LT.																					

19
277

LAKE COUNTY
LAK-I-6.97

ROADWAY

REF. NO.	STATION	FROM	TO	LT.
I-R		76+00	77+00	LT.

Excavation 58,375 CY.

Backfill 11,029 CY.

Subgrade 13,014 CY.