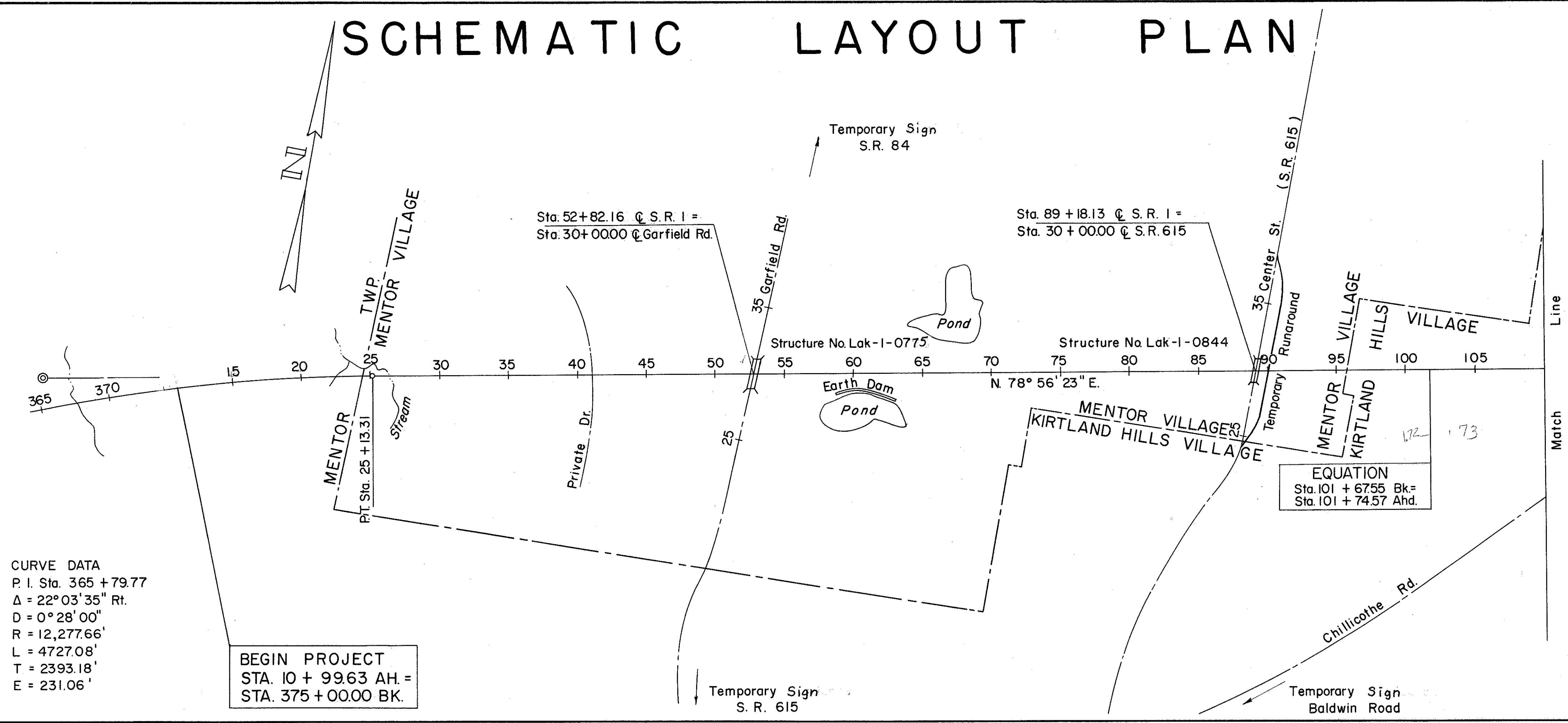


MICROFILMED
JUN 27 1965

SCHEMATIC LAYOUT PLAN

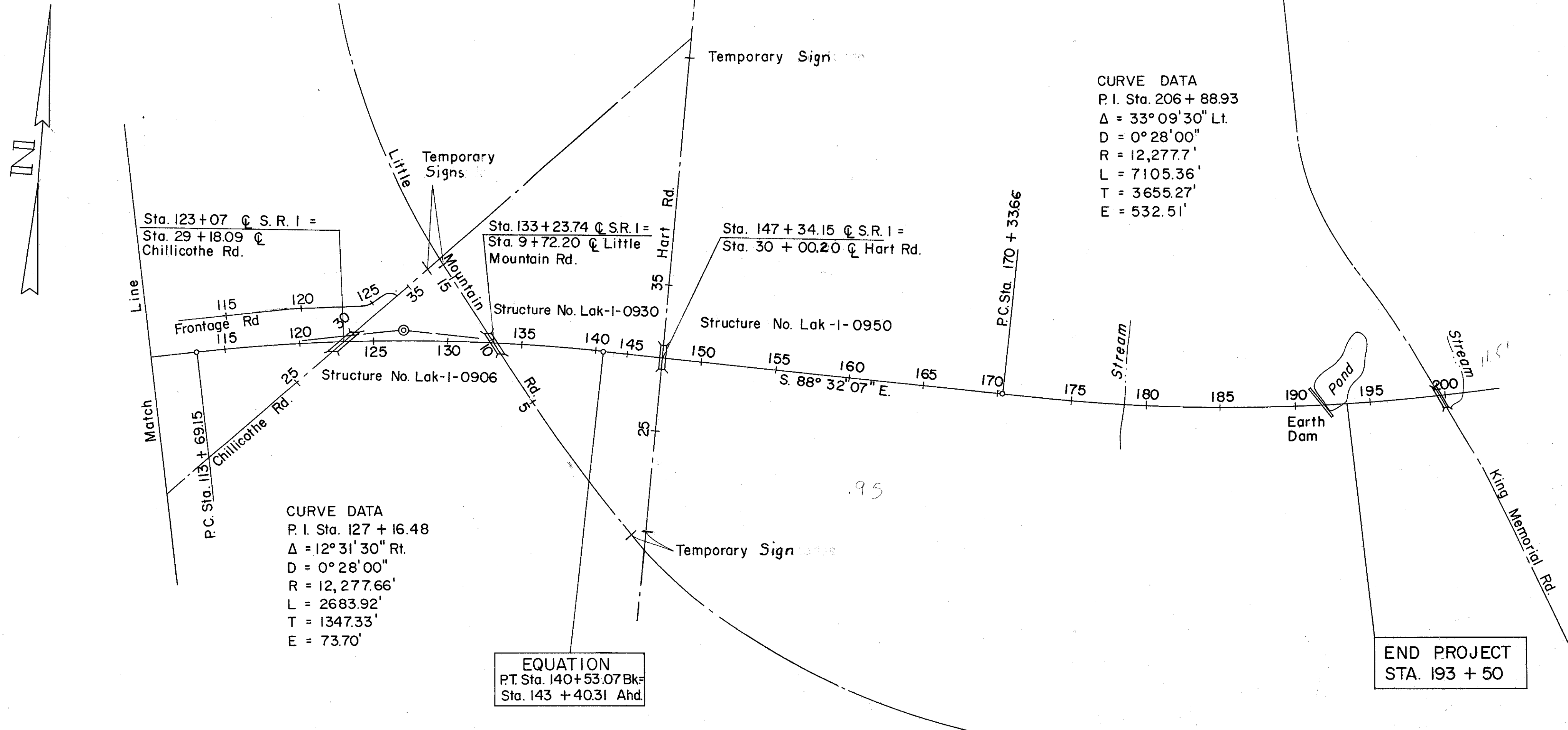
FED. RD. DIVISION	STATE	PROJECT	2
2	OHIO		277

LAKE COUNTY
LAK -I- 6.97



CURVE DATA
P. I. Sta. 365 + 79.77
 $\Delta = 22^\circ 03' 35''$ Rt.
D = $0^\circ 28' 00''$
R = 12,277.66'
L = 4727.08'
T = 2393.18'
E = 231.06'

BEGIN PROJECT
STA. 10 + 99.63 AH. =
STA. 375 + 00.00 BK.



CURVE DATA
P. I. Sta. 127 + 16.48
 $\Delta = 12^\circ 31' 30''$ Rt.
D = $0^\circ 28' 00''$
R = 12,277.66'
L = 2683.92'
T = 1347.33'
E = 73.70'

EQUATION
PT. Sta. 140 + 53.07 Bk. =
Sta. 143 + 40.31 Ahd.

END PROJECT
STA. 193 + 50

LIGHTS, SIGNS, AND BARRICADES

The Contractor shall, in addition to the general requirements of Sec. G-7.07, on this project perform the following:

- Provide, erect, and maintain movable gates on intersecting roads closed to traffic at all points where local traffic movement terminates.
- Provide, erect, and maintain lights, signs and barricades at the work limits on all intersecting roads which remain open to traffic.
- Provide, erect, and maintain standard 40" x 24" size "Road Closed" signs, sign supports, and lights at the following locations during periods in which the affected roads are closed to traffic:
 - Garfield Rd. just South of S.R. 84 Intersection.
 - Garfield Rd. just North of S.R. 615 Intersection.
 - Chillicothe Rd. just South of Little Mountain Intersection.
 - Chillicothe Rd. just North of Baldwin Rd. Intersection.
 - Little Mountain Road just South of Chillicothe Rd. Intersection.
 - Little Mountain Road just West of Hart Rd. Intersection.
 - Hart Rd. just South of Chillicothe Rd. Intersection.
 - Hart Rd. just North of Little Mountain Rd. Intersection.

Lights, barricades, and danger and warning signs shall be provided at locations shown above in accordance with Sec. G-7.07. Barricades and gates shall be as detailed on Standard Construction Drawing No. G-7.07. Sign supports and lights for "Road Closed" signs shall be as detailed in the "Ohio Manual of Uniform Traffic Control Devices".

Payment for providing, erecting, maintaining, and removing barricades, gates, lights, signs, and sign supports shall be included in the lump sum price bid for "Maintaining Traffic".

Scale: 1" = 500'