

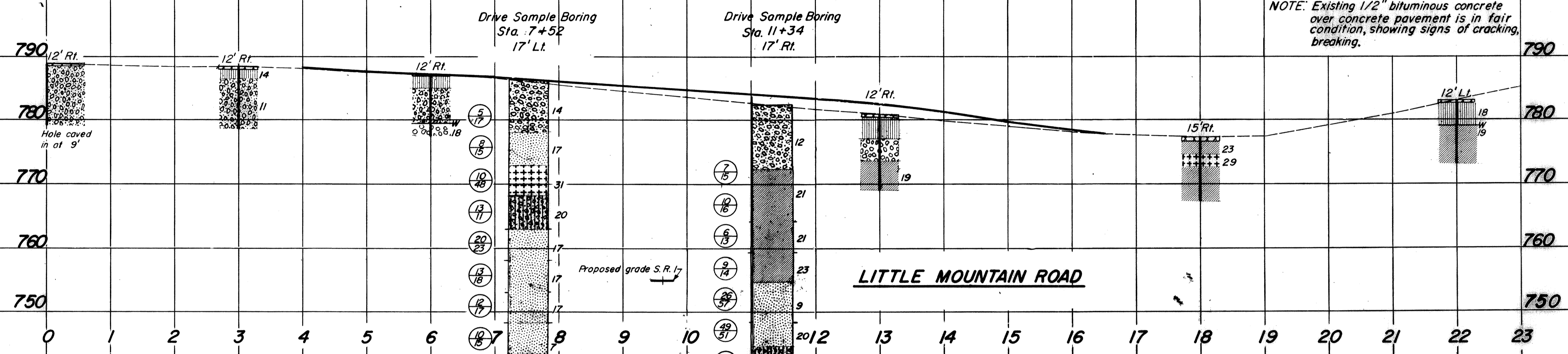
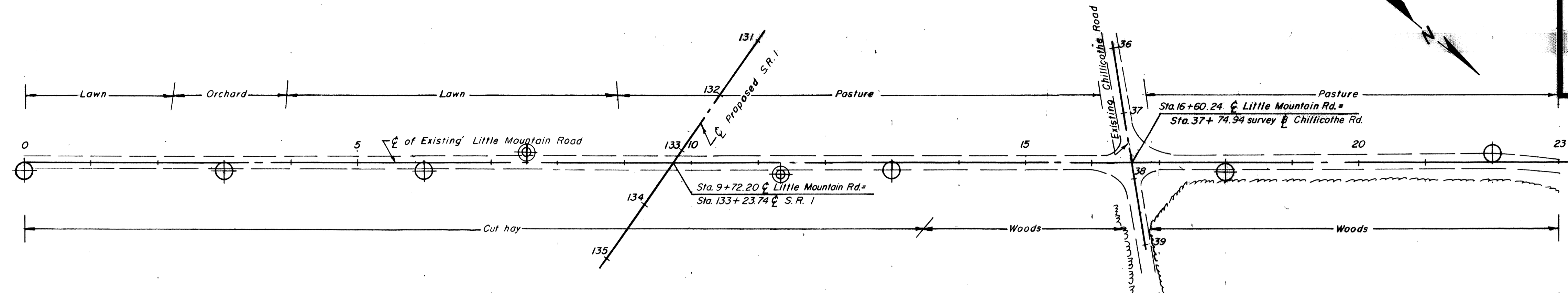
MICROFILMED
JUN 27 1965

SOIL PROFILE
LAKE COUNTY
LAK-1-6.97

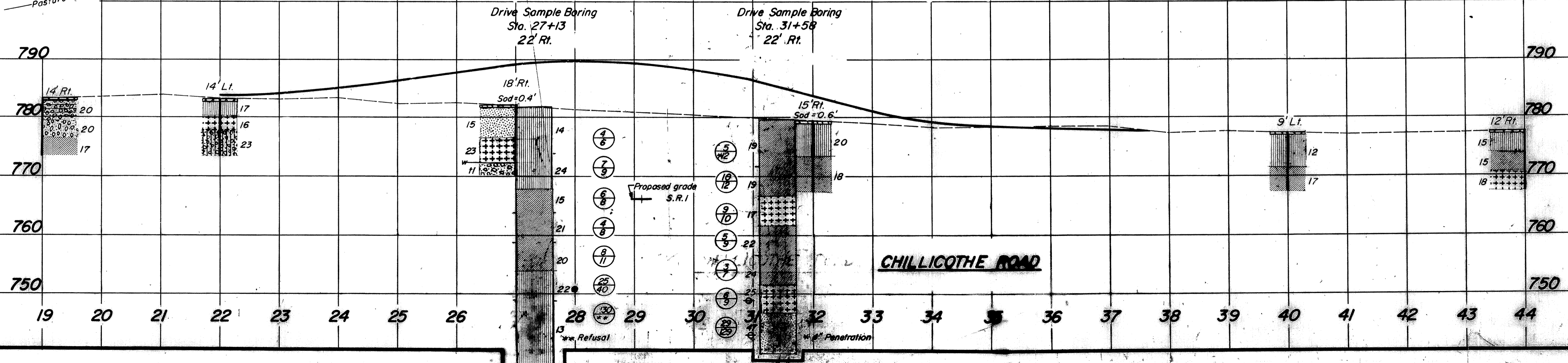
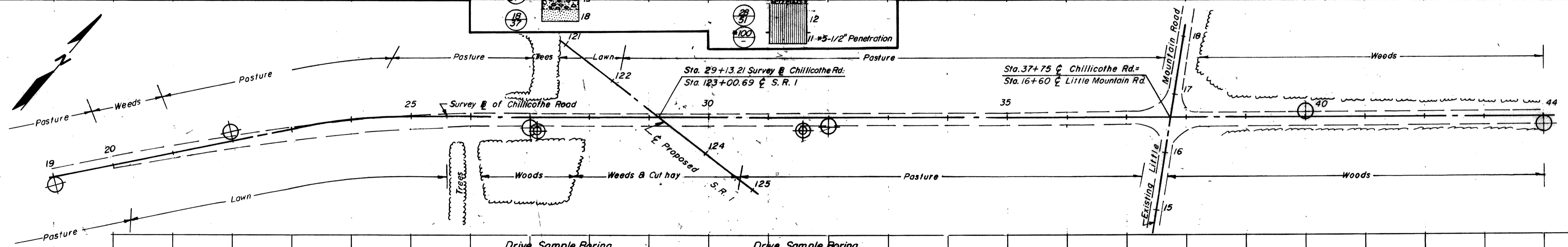
8
9

STATE HIGHWAY TESTING AND
RESEARCH LABORATORY
O. S. U. CAMPUS, COLUMBUS, OHIO

Revised July 31, 1959



NOTE: Existing 1/2" bituminous concrete over concrete pavement is in fair condition, showing signs of cracking, breaking.



Refusal

Penetration