

KIRTLAND TWP.
TR-1 OL-3
T-2-N R-2-W

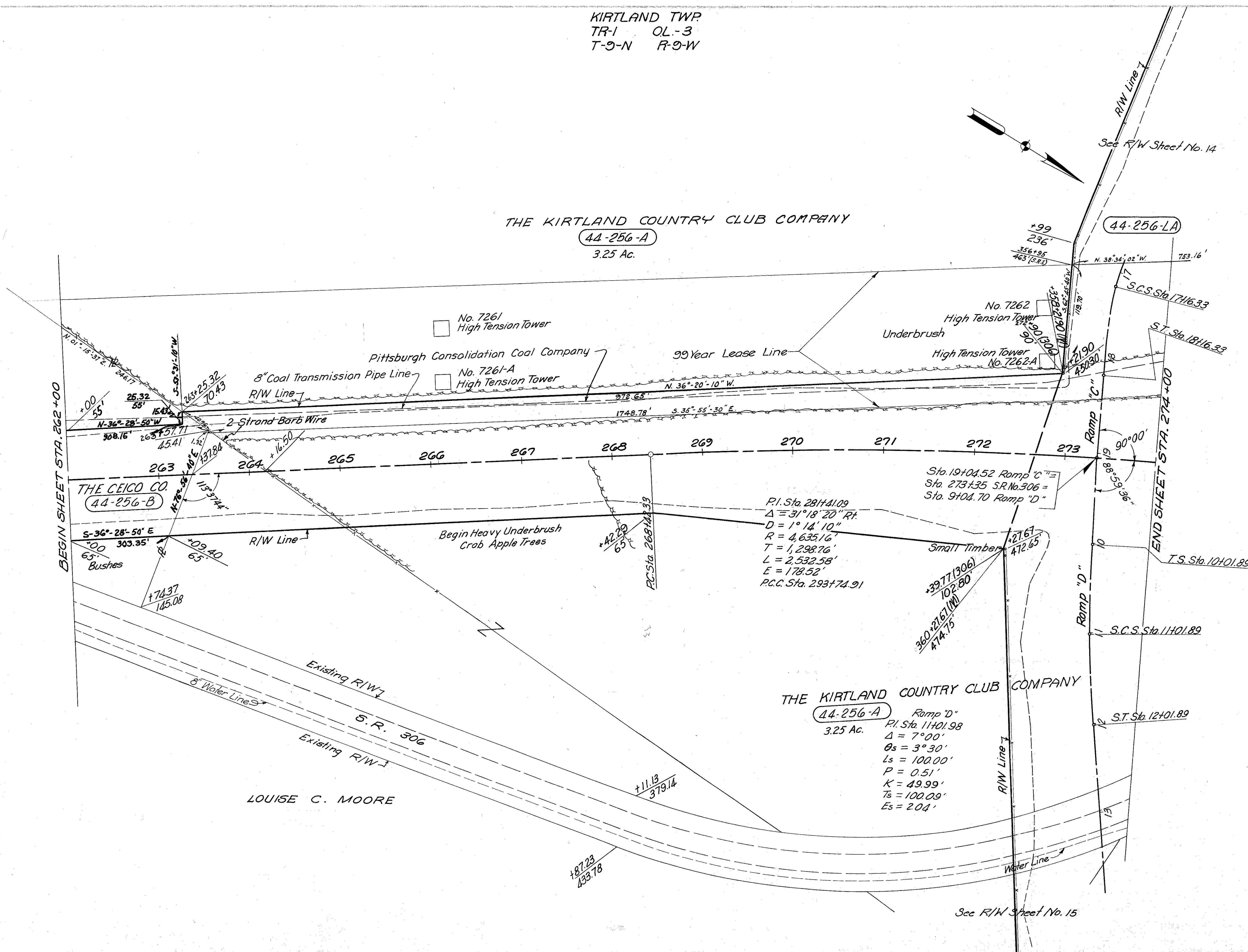
FED. RD. DIVISION	STATE	PROJECT
2	OHIO	S-46(7) I-1103(20)

333
333

LAKE COUNTY
LAK-1-4.02
LAK-306-4.86
R/W
20 of 22

THE KIRTLAND COUNTRY CLUB COMPANY

44-256-A
3.25 Ac.



P.I. Sta. 281+41.09
 $\Delta = 31^{\circ}18'20''$ Rt.
D = 1'14"10"
R = 4,635.16'
T = 1,298.76'
L = 2,532.58'
E = 178.52'
P.C.C. Sta. 293+74.91

THE KIRTLAND COUNTRY CLUB COMPANY

44-256-A
3.25 Ac.

Ramp "D"
P.I. Sta. 11+01.98
 $\Delta = 7^{\circ}00'$
 $\theta_s = 3^{\circ}30'$
Ls = 100.00'
P = 0.51'
K = 49.99'
Ts = 100.09'
Es = 2.04'

LOUISE C. MOORE

5-10-63	Description of C.E.I. Lease corrected.	A.M.
REVISIONS		
MICHAEL BAKER JR., CONSULTING ENGINEERS ROCHESTER, PENNSYLVANIA		
DATE: 3-23-59	STATE OF OHIO DEPARTMENT OF HIGHWAYS RIGHT OF WAY PLANS STATE HIGHWAY NO. 1 C-44 S.R. NO. 306 STA. 262+00 TO STA. 274+00	
Designed	Drawn	Traced
Checked	Reviewed Date	Revised
R.G.	M.P.	K.A.
E.H.		