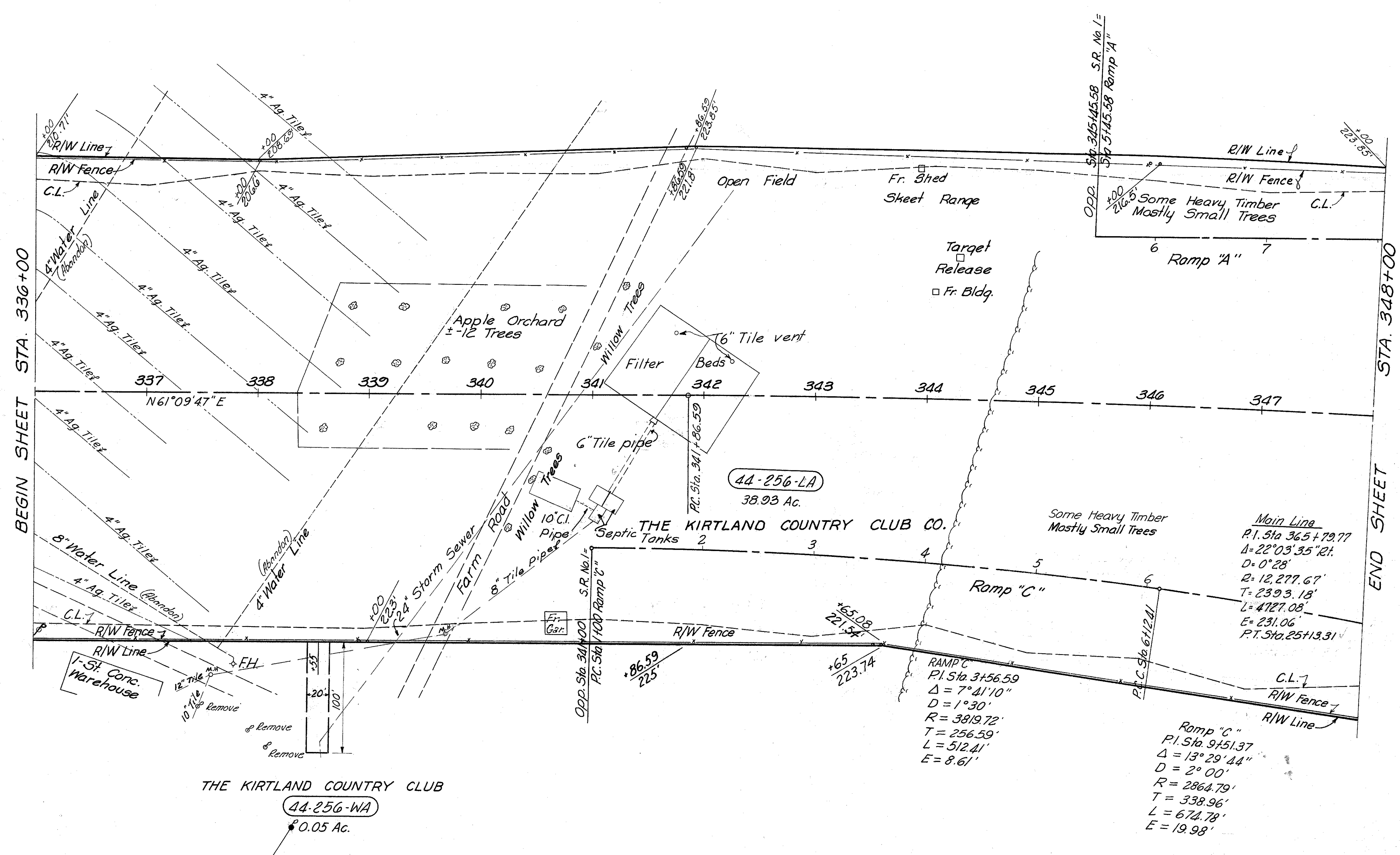
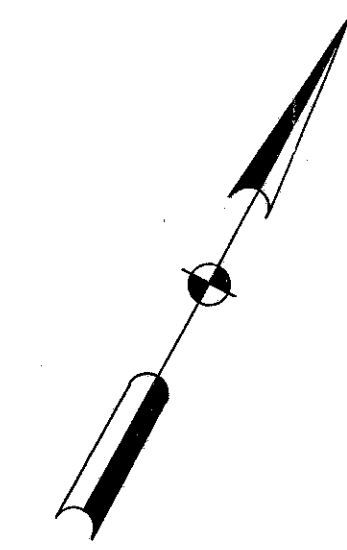


FED. RD. DIVISION	STATE	PROJECT	326 333
2	OHIO	1-1103(20)	

LAKE COUNTY
LAK-1-4.02
LIMITED ACCESS

R/W
13 of 22

KIRTLAND TOWNSHIP
TRACT 1 OL-2
T-9-N R-10-W



STRUCTURES TO BE REMOVED
Parcel No. 44-256 LA.
1-Fr. Garage
1-Fr. Shed

THE KIRTLAND COUNTRY CLUB
44-256-WA
0.05 Ac.

Main Line
P.I. Sta. 36.5+79.77
 $\Delta = 22^\circ 03' 35''$ RT.
D = 0' 28"
R = 12,277.67'
T = 2393.18'
L = 4727.08'
E = 231.06'
P.T. Sta. 25+13.31

RAMP C
P.I. Sta. 3+56.59
 $\Delta = 7^\circ 41' 10''$
D = 1' 30"
R = 3819.72'
T = 256.59'
L = 512.41'
E = 8.61'

Romp "C"
P.I. Sta. 9+51.37
 $\Delta = 13^\circ 29' 44''$
D = 2' 00"
R = 2864.79'
T = 338.96'
L = 674.78'
E = 19.98'

2409 Lin. Ft. Type "D" Fence

MICHAEL BAKER JR. CONSULTING ENGINEERS
ROCHESTER, PENNSYLVANIA

DATE:
9-23-59

STATE OF OHIO
DEPARTMENT OF HIGHWAYS
RIGHT OF WAY PLANS
STATE HIGHWAY NO. 1
C-44
STA 336+00 TO STA 348+00

Designed	Drawn	Traced	Checked	Reviewed Date	Revised
J.P.	R.P.	K.A.	R.G.		