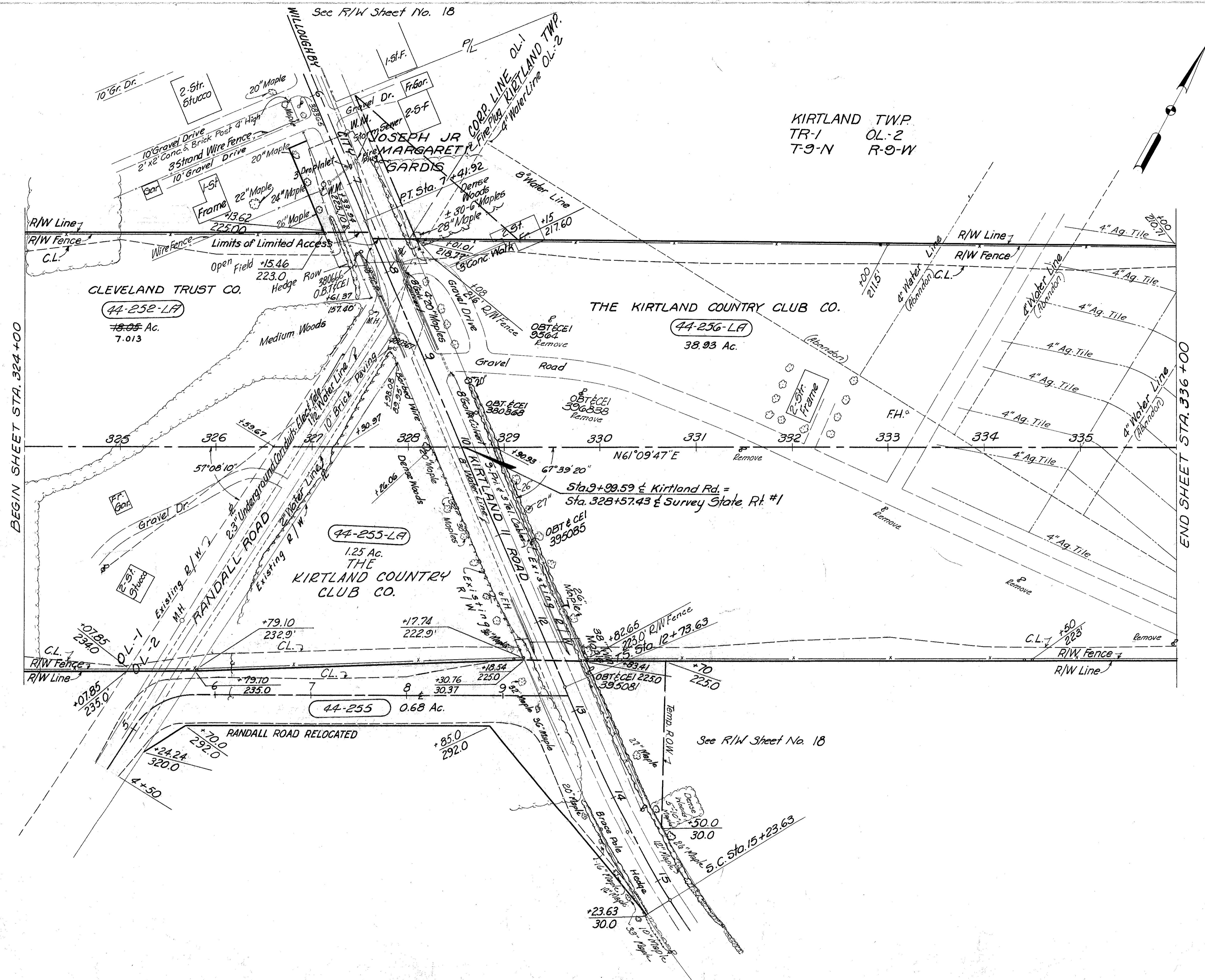


LAKE COUNTY  
LAK-1-4.02  
LIMITED ACCESS

R / W  
12 of 22

KIRTLAND TWP.  
TR-1 OL-2  
T-9-N R-9-W



CLEVELAND ELECTRIC ILLUMINATING COMPANY'S  
RELOCATION PLAN: SHEETS 325-326 & 331

- Remove - 1 35'-5
- 1 40'-3
- 1 35'-5
- 1 35'-5
- 1 35'-5
- 1 35'-5
- 1 45'-3
- 1 40'-3
- Set - 1 25'-3
- 1 30'-5
- 1 35'-5

**STRUCTURES TO BE REMOVED**

Parcel No. 44-252 LA  
1-2 Story Stucco Res.  
1-Frame Garage

Parcel No. 44-256 LA  
2-2 Story Fr. Res.

2445 Lin. Ft. Type "D" Fence

MICHAEL BAKER JR., CONSULTING ENGINEERS  
ROCHESTER, PENNSYLVANIA

DATE:  
3-23-59  
10-8-59

**STATE OF OHIO**  
**DEPARTMENT OF HIGHWAYS**  
**RIGHT OF WAY PLANS**  
STATE HIGHWAY NO. 1  
C-44  
STA. 324+00 TO STA. 336+00

Designed	Drawn	Traced	Checked	Reviewed Date	Revised
RG.	J.S.	L.W.	J.P.		