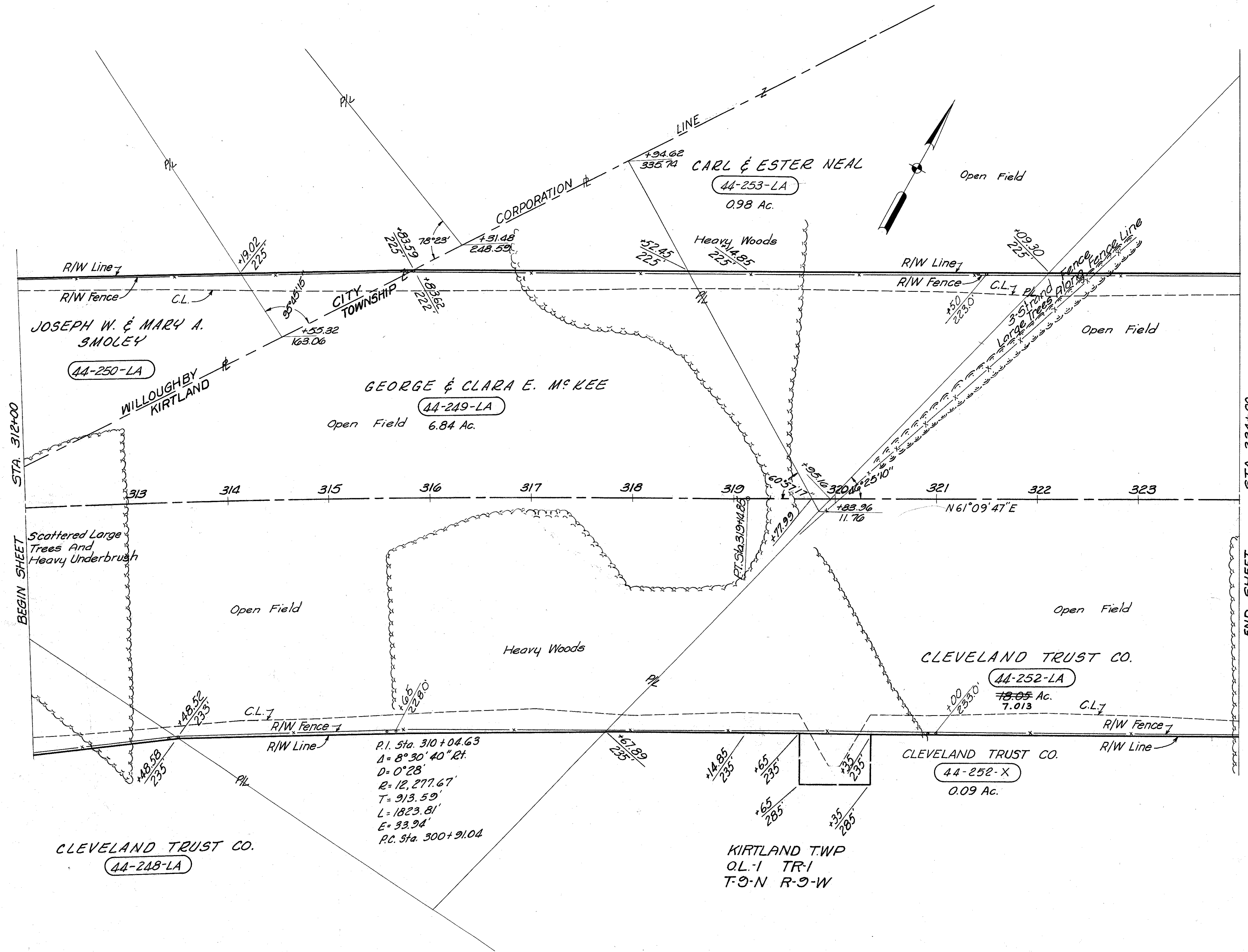


LAKE COUNTY
LAK-1-4.02
LIMITED ACCESS
R/W
11 of 22



P.I. Sta. 310+04.63
 $\Delta = 8^{\circ}30'40''$ Rt.
 $D = 0^{\circ}28'$
 $R = 12,277.67'$
 $T = 313.59'$
 $L = 1823.81'$
 $E = 33.94'$
 P.C. Sta. 300+91.04

2404 Lin. Ft. Type "D" Fence

MICHAEL BAKER JR., CONSULTING ENGINEERS ROCHESTER, PENNSYLVANIA					
STATE OF OHIO DEPARTMENT OF HIGHWAYS RIGHT OF WAY PLANS					
STATE HIGHWAY NO. 1 C-44 STA. 312+00 TO STA. 324+00					
DATE:	Designed	Drawn	Traced	Checked	Reviewed Date
3-23-59 10-8-59	J.P.	R.G.	L.W.	E.H.	