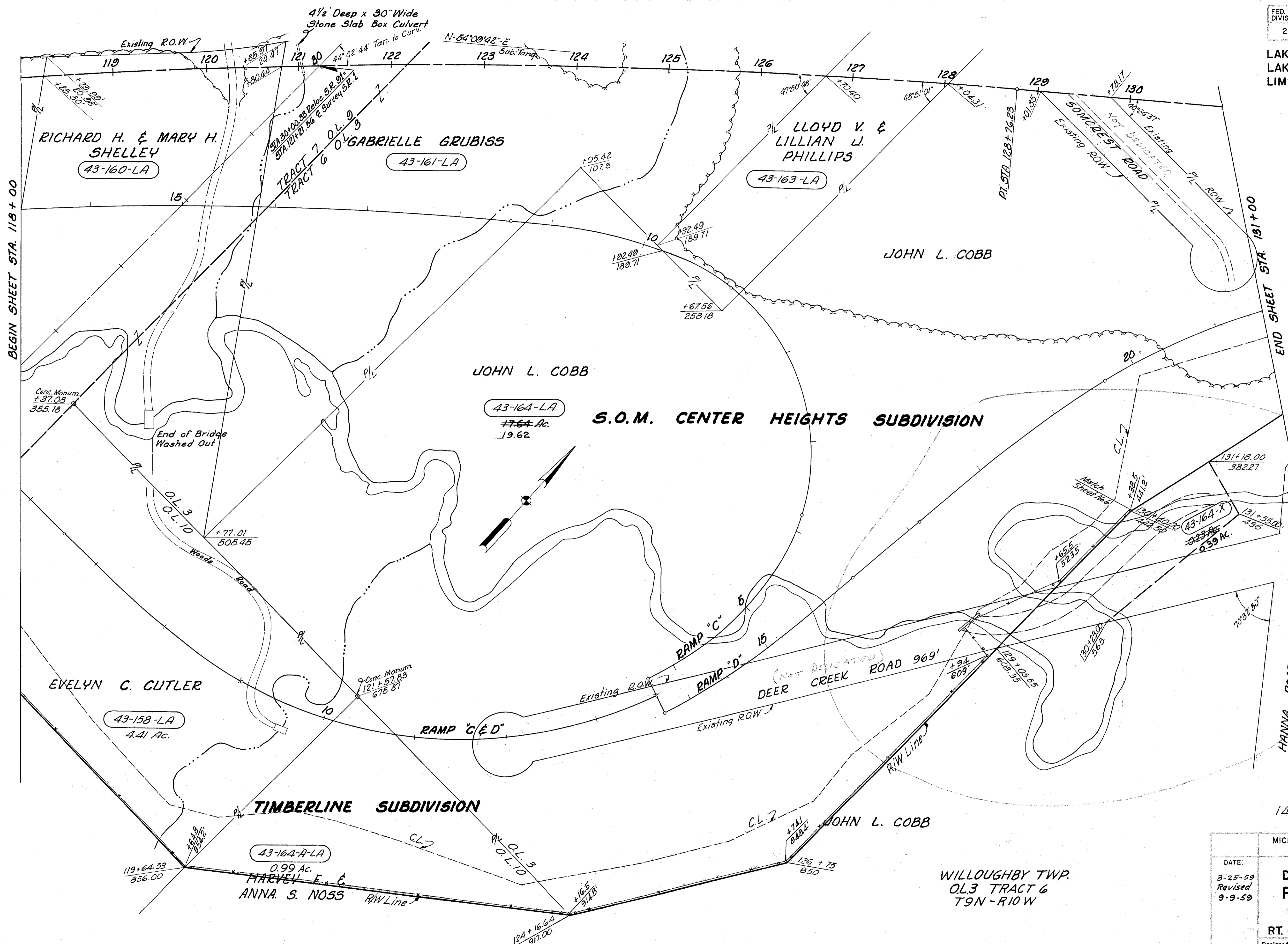


LAKE COUNTY
LAK-1-2.16
LIMITED ACCESS

R / W
5 of 17



BEGIN SHEET STA. 118+00

END SHEET STA. 131+00

WILLOUGHBY TWP.
O.L.3 TRACT 6
T9N - R10W

1469 L.F. Type "D" Fence

MICHAEL BAKER JR., CONSULTING ENGINEERS ROCHESTER, PENNSYLVANIA					
STATE OF OHIO DEPARTMENT OF HIGHWAYS RIGHT OF WAY PLANS STATE HIGHWAY NO. 1 C-43 RT. 1 STA. 118+00 TO STA. 131+00					
DATE:	3-25-59	Revised	9-9-59		
Designed	Drawn	Traced	Checked	Reviewed Date	Revised
J.P.	B.M.	K.A.	B.P.		