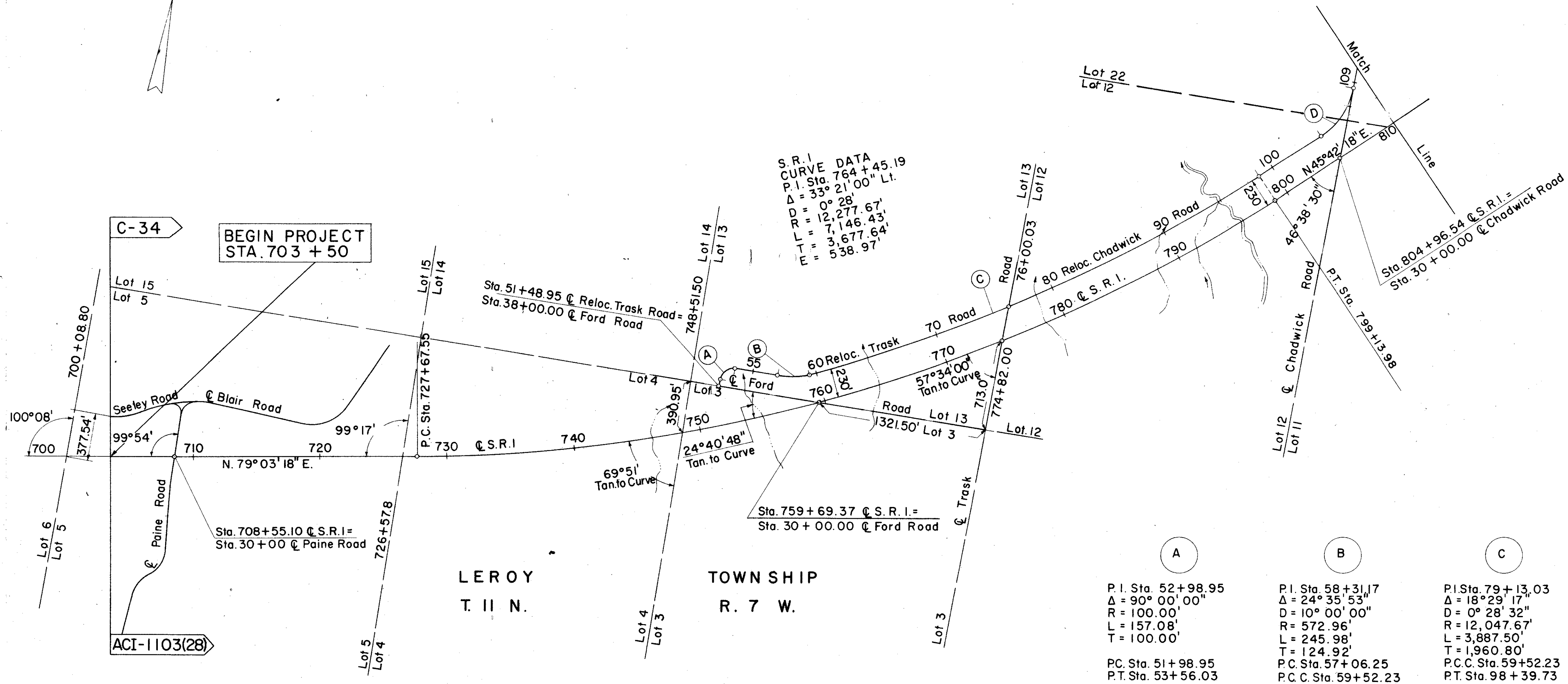
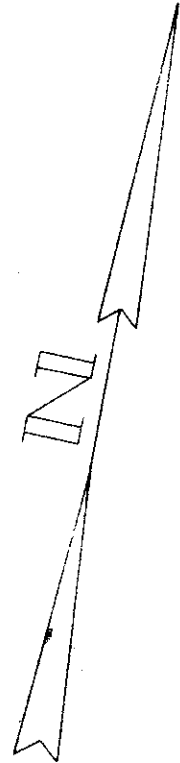
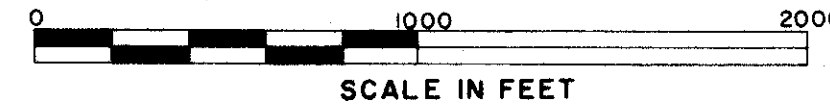


# LOCATION PLAN

## LAK-1-20.03 & LAK-1-22.43

### LEROY, PERRY & MADISON TOWNSHIPS

#### LAKE COUNTY



A	B	C	D
P. I. Sta. 52+98.95	P. I. Sta. 58+31.17	P. I. Sta. 79+13.03	P. I. Sta. 106+39.47
$\Delta = 90^\circ 00' 00''$	$\Delta = 24^\circ 35' 53''$	$\Delta = 18^\circ 29' 17''$	$\Delta = 46^\circ 38' 30''$
D = 100.00'	D = 10° 00' 00"	D = 0° 28' 32"	D = 10° 00' 00"
R = 157.08'	R = 572.96'	R = 12,047.67'	R = 572.96'
L = 100.00'	L = 245.98'	L = 3,887.50'	L = 466.42'
T = 100.00'	T = 124.92'	T = 1,960.80'	T = 247.00'
P.C. Sta. 51+98.95	P.C. Sta. 57+06.25	P.C. Sta. 59+52.23	P.C. Sta. 103+92.47
P.T. Sta. 53+56.03	P.C. Sta. 59+52.23	P.T. Sta. 98+39.73	P.T. Sta. 108+58.89

Received 6/19/58 Time 09:03 AM 201  
211

Recorded 6/19/58

Plat Book M Page 42

Signed D.G. Jenkins Recorder, Lake County, Ohio

Fee 10.00 Paid 1  
11

Signed John Russell  
Right of Way Engineer, Interstate Projects

Date \_\_\_\_\_

Signed Robert E. Smith  
Robert E. Smith P.E. No. 18042  
Partner - Capitol Engineering Associates

Date \_\_\_\_\_

Location and Limited Access approved and Journalized by the  
Director of Highways.  
Date September 10, 1957 Volume 402 Page 805  
in the Director of Highways Journal.

