

FED. RD. DIVISION	STATE	PROJECT
2	OHIO	

275
277
14
16

LAK - I - 6.97
R/W PLAN
LIMITED ACCESS

E. E. BOYER SUBDIVISION, PROPOSED

RESIDUE = 4.557 Ac. ±

SUBLOT # 6

ANDREW & MARY SILA

31-13 LA
Cont. 0.46 Ac.

SUBLOT # 8

RESIDUE = 4.734 Ac. ±

JACOB J. & VICTORIA GRUDEN

31-14 LA
Cont. 0.29 Ac.

RESIDUE = 6.022 Ac. ±

ROBERT H. & FRANCES MORGAN

31-15 LA
Cont. 0.17 Ac.

RESIDUE = 1.457 Ac. ±

SUBLOT # 10

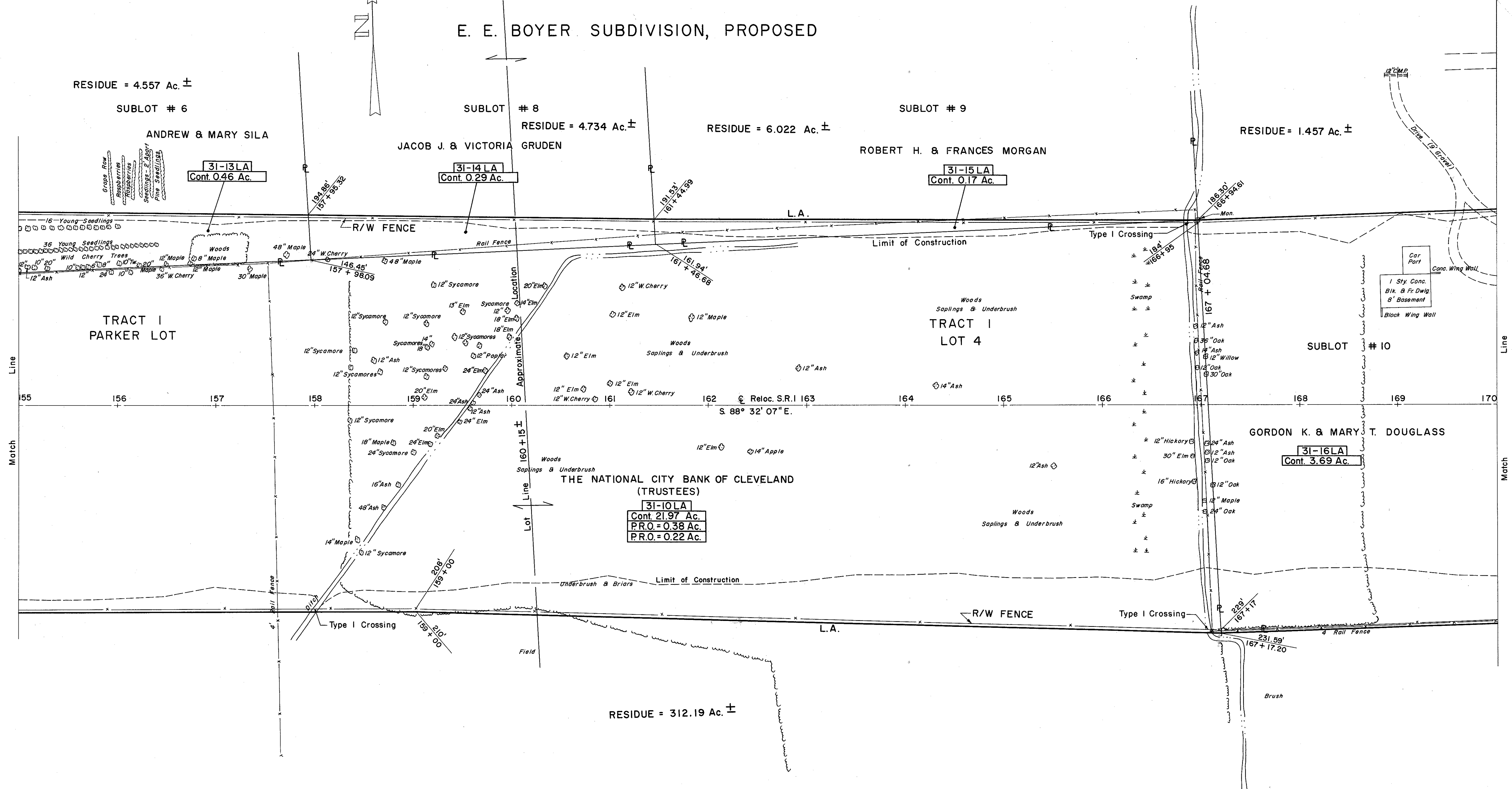
GORDON K. & MARY T. DOUGLASS

31-16 LA
Cont. 3.69 Ac.

THE NATIONAL CITY BANK OF CLEVELAND
(TRUSTEES)

31-10 LA
Cont. 21.97 Ac.
P.R.O. = 0.38 Ac.
P.R.O. = 0.22 Ac.

RESIDUE = 312.19 Ac. ±



S-24 REMOVAL OF STRUCTURES	
PARCEL 31-16 LA	1 STY. CONC. BLK & FR. DWELLING WITH CARPORT

3008 L.F TYPE "D" FENCE

REV. 3-29-60

R/W PLAN S.R.I STA. 155 + 00 TO STA. 170 + 00