

LOCATION PLAN

LAK - 1 - 6.97

MENTOR TOWNSHIP MENTOR VILLAGE KIRTLAND HILLS VILLAGE
LAKE COUNTY

351096

Received SEPT 22, 1960 Time 1:06 P.M.
 Recorded SEPT 22, 1960
 Plat Book N Page 38-38-1
 Signed R. G. Jenkins Recorder Lake County, Ohio
 Fee 10.80 Paid

38

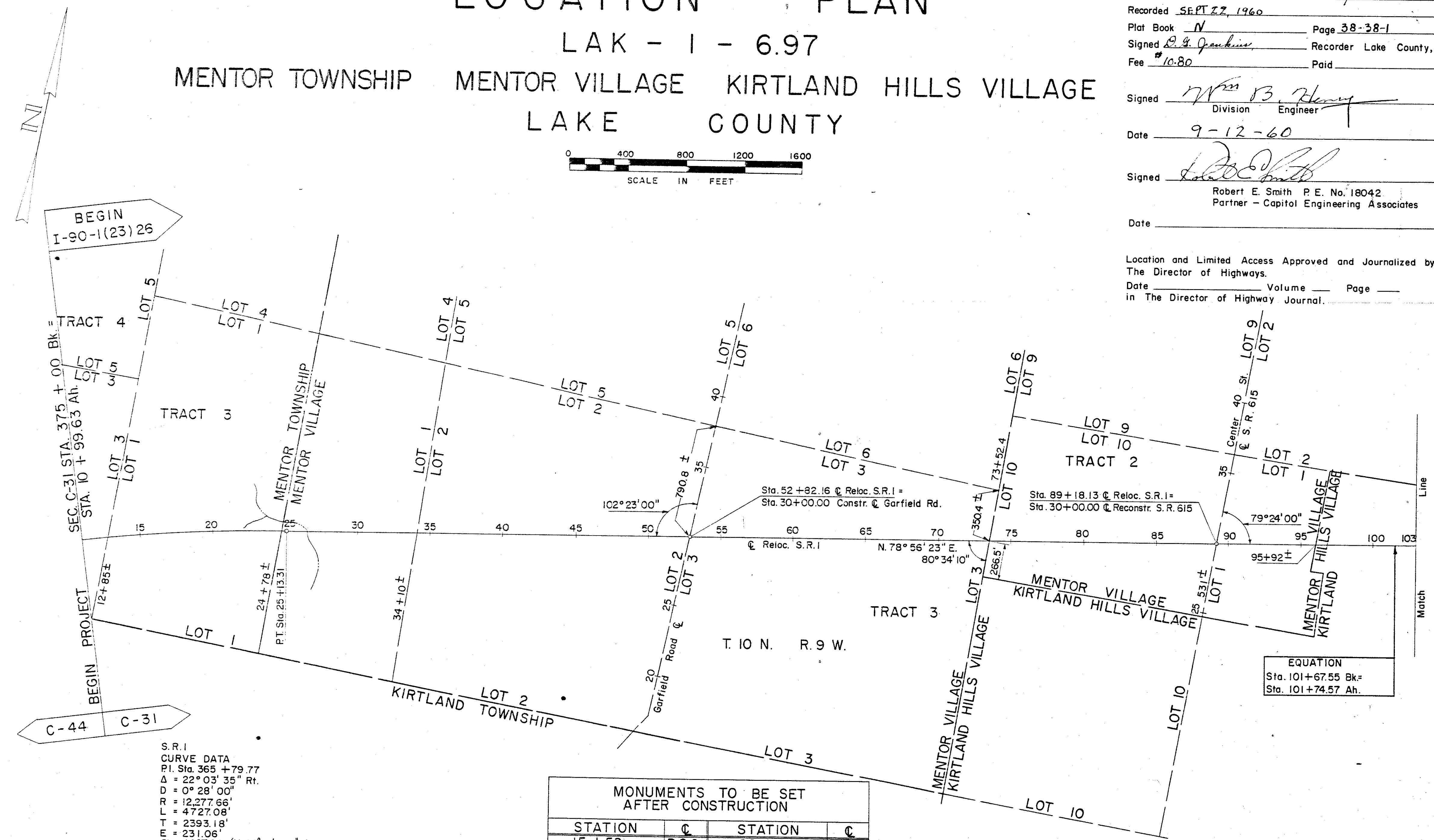
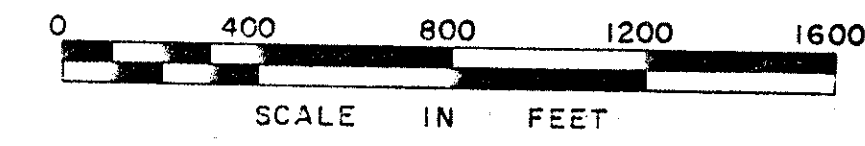
262
277

1
16

Signed Wm B. Henry
 Division Engineer
 Date 9-12-60

Signed Robert E. Smith
 Robert E. Smith P. E. No. 18042
 Partner - Capitol Engineering Associates
 Date _____

Location and Limited Access Approved and Journalized by
 The Director of Highways.
 Date _____ Volume _____ Page _____
 in The Director of Highway Journal.



BEGIN
I-90-1(23)26

C-44 C-31

S.R.1
 CURVE DATA
 P.I. Sta. 365 + 79.77
 $\Delta = 22^\circ 03' 35''$ Rt.
 $D = 0^\circ 28' 00''$
 $R = 12,277.66'$
 $L = 4,727.08'$
 $T = 2,393.18'$
 $E = 231.06'$
 $Ch = 4697.94$ (N. $67^\circ 54' 35.5''$ E.)

MONUMENTS TO BE SET AFTER CONSTRUCTION			
STATION	℄	STATION	℄
15 + 50	P.O.C.	60 + 00	P.O.T.
25 + 13.31	P.T.	69 + 00	P.O.T.
34 + 00	P.O.T.	78 + 00	P.O.T.
42 + 00	P.O.T.	87 + 00	P.O.T.
51 + 00	P.O.T.	96 + 00	P.O.T.

EQUATION
 Sta. 101 + 67.55 Bk =
 Sta. 101 + 74.57 Ah.

TRANSFER NOT NECESSARY
 Date 9/22/60
 John H. Mumfery
 Lake County Auditor