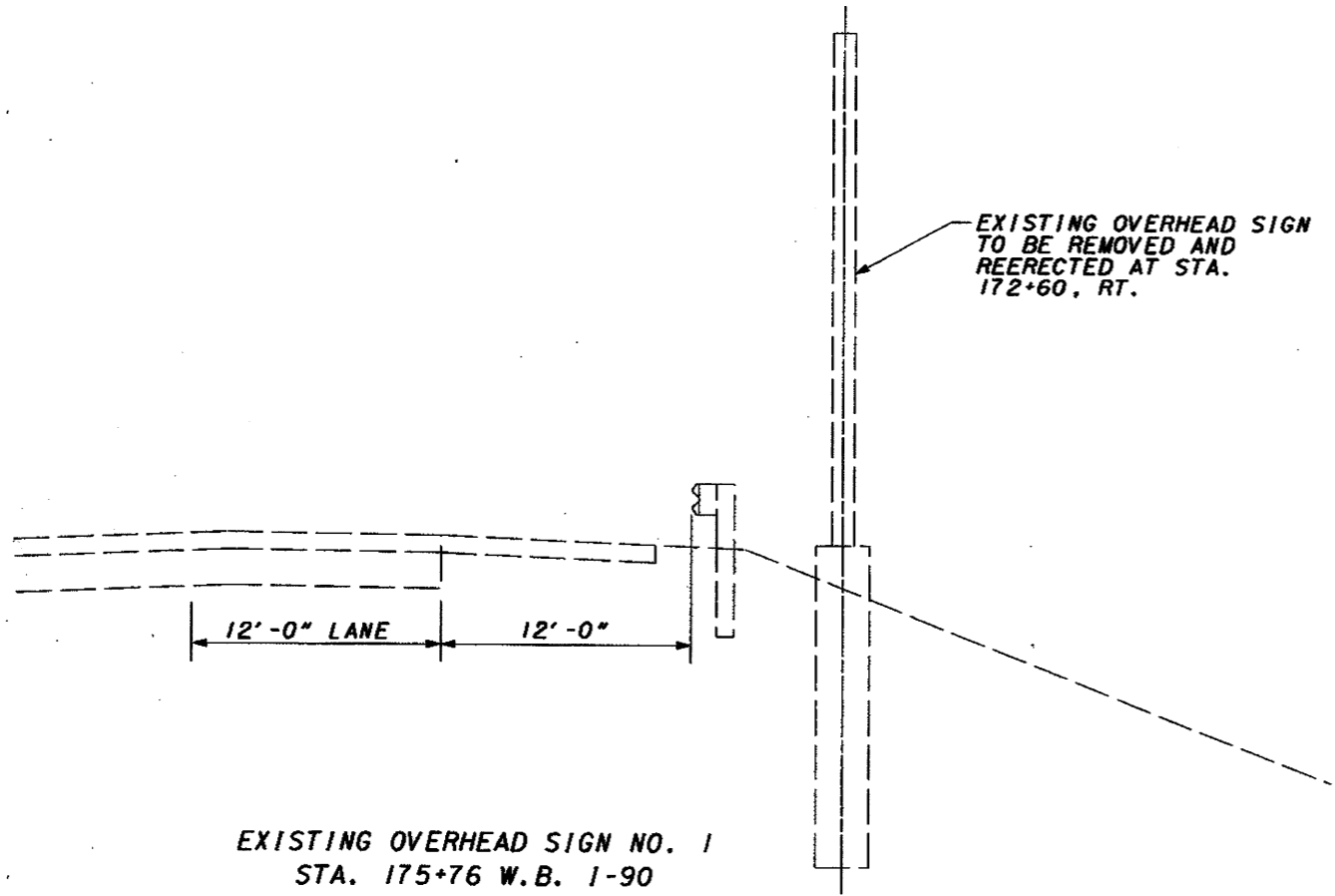


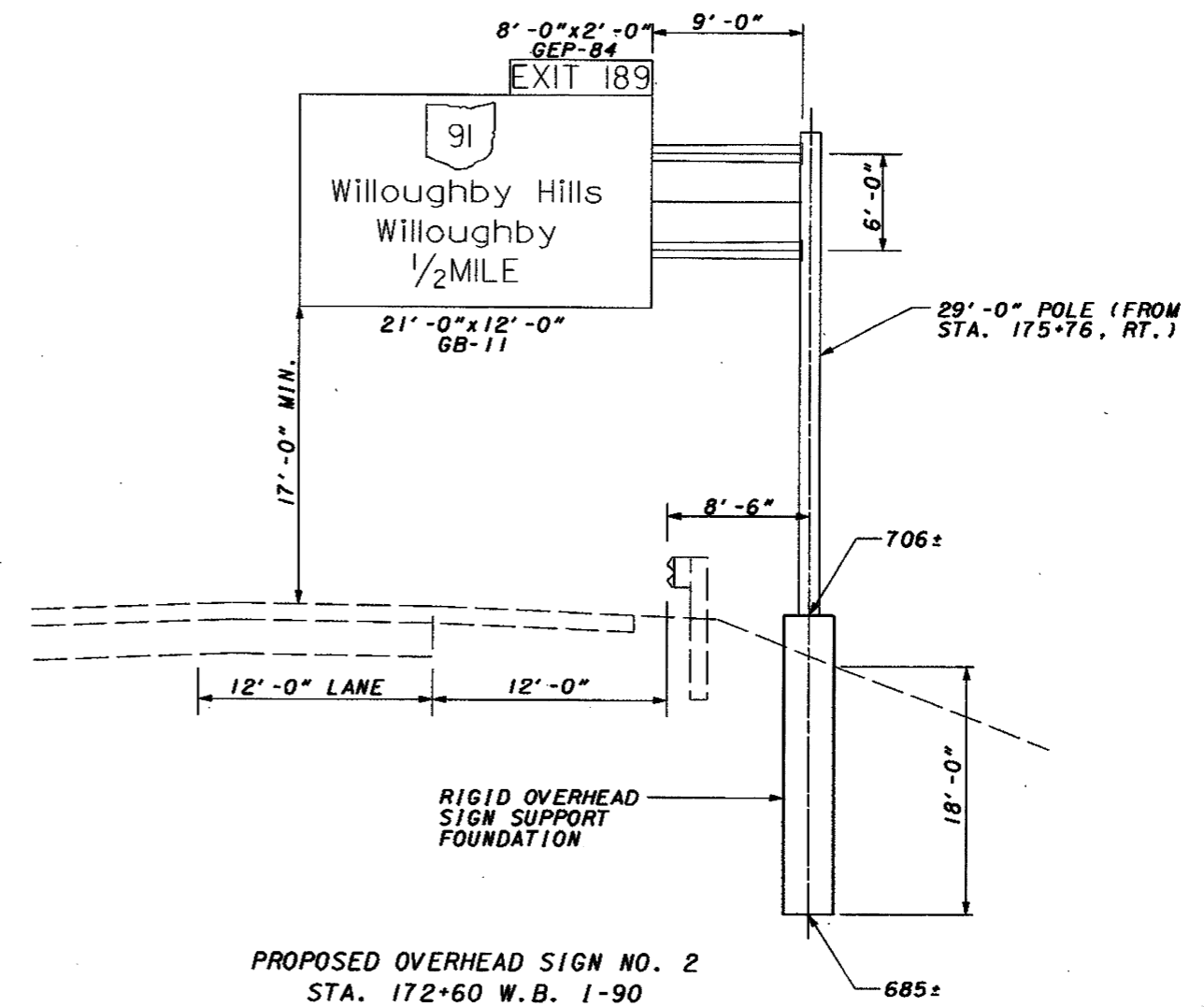
228231.ec.dgn



EXISTING OVERHEAD SIGN  
TO BE REMOVED AND  
REERECTED AT STA.  
172+60, RT.

EXISTING OVERHEAD SIGN NO. 1  
STA. 175+76 W.B. 1-90  
TYPE 12.30, DESIGN NO. 12  
30'-0" ARMS

THE EXISTING SIGNS, ARMS, AND HARDWARE HAVE BEEN  
REMOVED AND STORED AT THE PAINESVILLE YARD.  
SEE GENERAL NOTE SHEET 6 FOR DETAILS.  
SEE PLAN SHEET 12 FOR QUANTITIES.



PROPOSED OVERHEAD SIGN NO. 2  
STA. 172+60 W.B. 1-90  
TYPE 12.30, DESIGN NO. 12  
30'-0" ARMS

SURVEY NOT COMPLETED, ELEVATIONS TAKEN FROM ORIGINAL  
CONSTRUCTION PLANS. THE CONTRACTOR SHALL FIELD VERIFY  
PLAN ELEVATIONS AND MODIFY CONSTRUCTION OF RIGID  
OVERHEAD SIGN SUPPORT FOUNDATION AS NECESSARY TO  
ENSURE 17'-0" MINIMUM CLEARANCE ABOVE ROADWAY.  
SEE GENERAL NOTE SHEET 6 FOR DETAILS.  
SEE PLAN SHEET 12 FOR QUANTITIES.

CALCULATED  
MRS

CHECKED  
AEN

SIGN ELEVATION  
STA. 175+76 AND STA. 172+60

LAK-90-4.10

16  
19