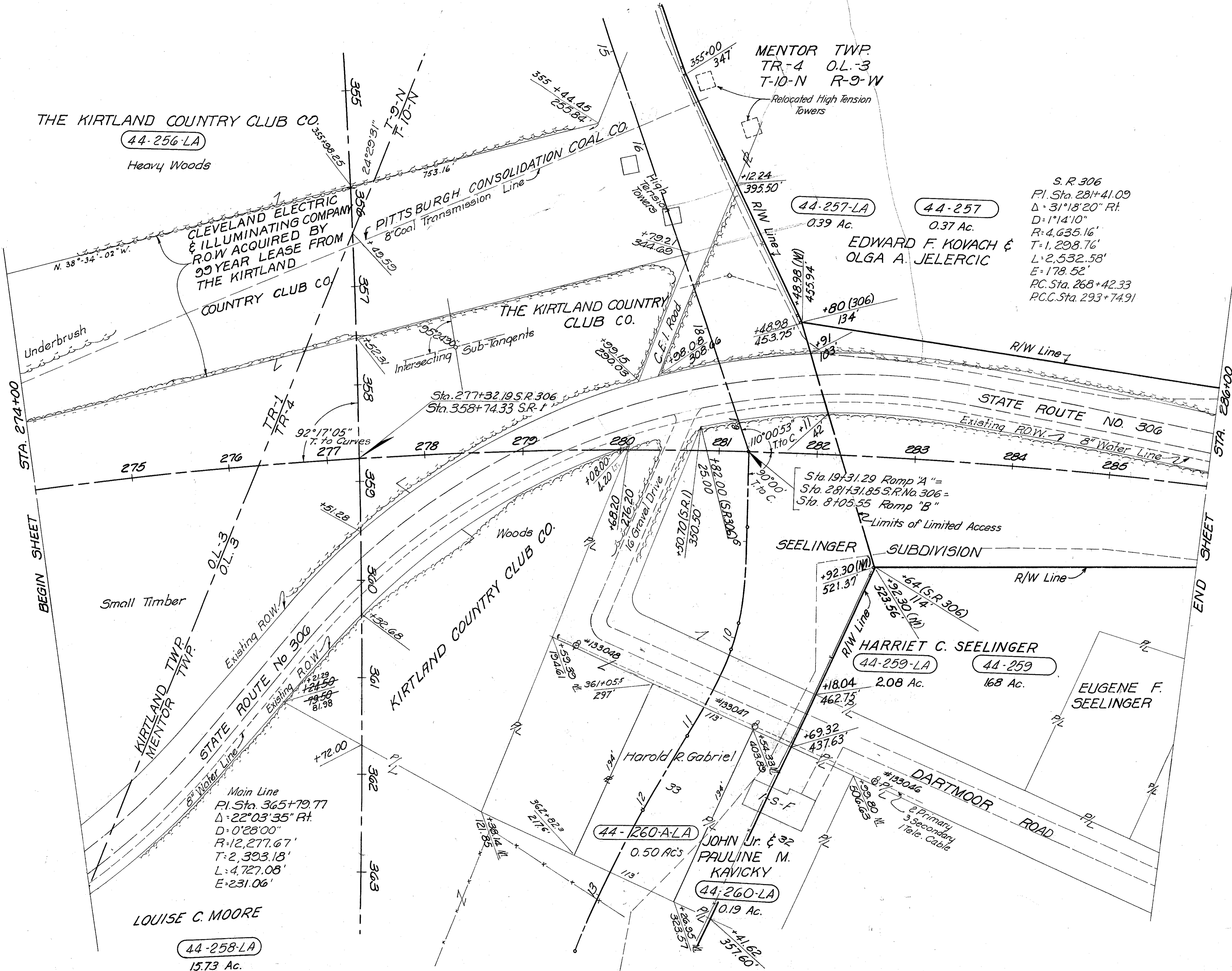


See R/W Sheet No. 12

See R/W Sheet No. 13



S. R. 306
P.I. Sta. 281+41.09
Δ = 31°18'20" Rt.
D = 1°14'10"
R = 4,635.16'
T = 1,298.76'
L = 2,532.58'
E = 178.52'
P.C. Sta. 268+42.33
P.C.C. Sta. 293+74.91

EDWARD F. KOVACH &
OLGA A. JELERCIC
0.37 Ac.

HARRIET C. SEELINGER
44-259-LA
2.08 Ac.

EUGENE F. SEELINGER
168 Ac.

JOHN Jr. & 32
PAULINE M. KAVICKY
44-260-LA
0.19 Ac.

LOUISE C. MOORE
44-258-LA
15.73 Ac.

Revision	MICHAEL BAKER JR., CONSULTING ENGINEERS ROCHESTER, PENNSYLVANIA
DATE:	STATE OF OHIO DEPARTMENT OF HIGHWAYS RIGHT OF WAY PLANS STATE HIGHWAY NO. 1 C-44
3-23-59	S.R. NO. 306 STA. 274+00 TO STA. 286+00
6-2-59	Designed Drawn Traced Checked Reviewed Date Revised
1-13-60	R.G. M.P. K.A. E.H.