

LAKE COUNTY  
LAK-306-4.86  
R/W  
19 of 22

KIRTLAND TWP  
T-9-N R-9-W  
TRACT-1 O.L.-3

THE KIRTLAND COUNTRY CLUB COMPANY  
44-256-A  
3.25 Ac.

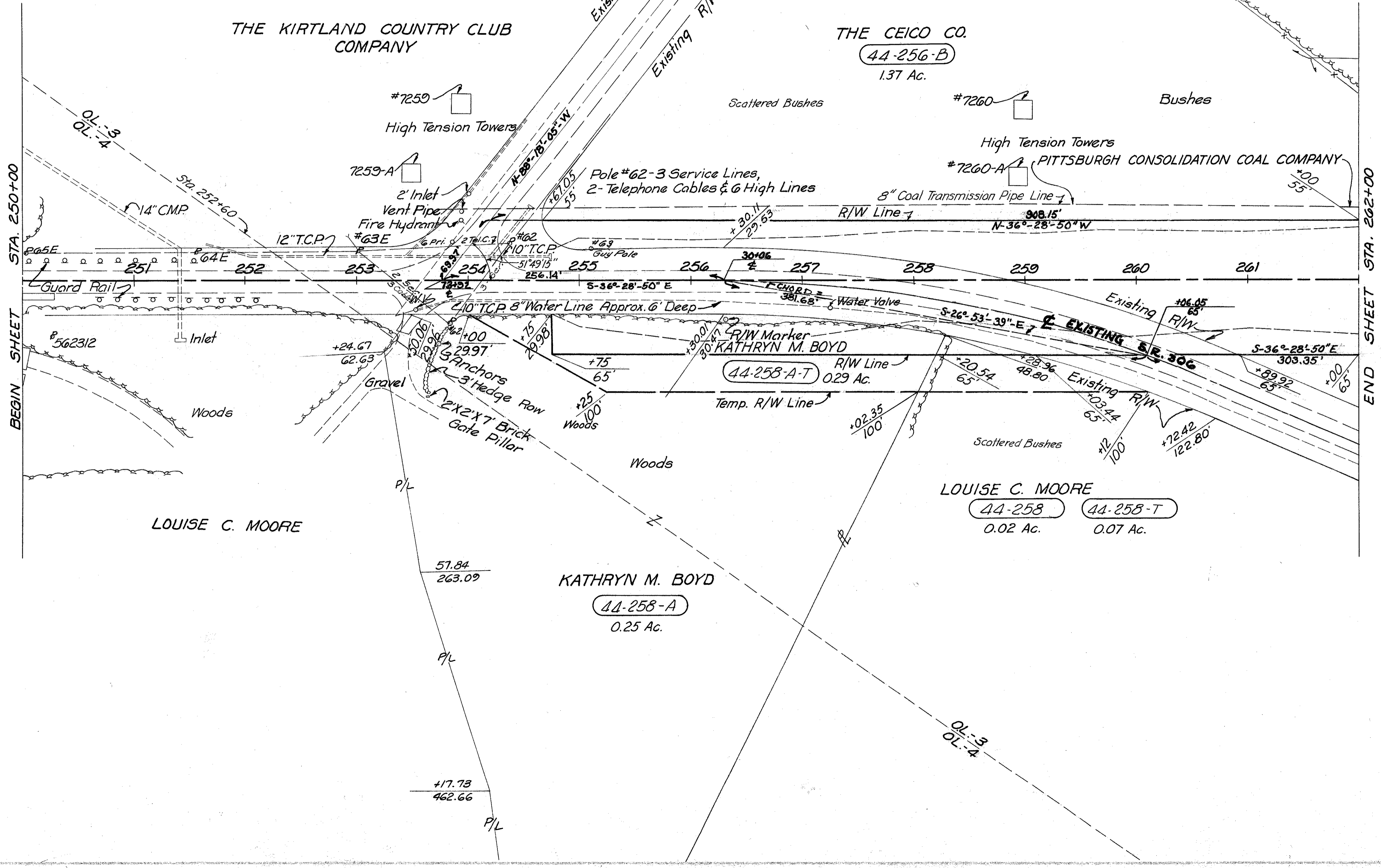
THE KIRTLAND COUNTRY CLUB COMPANY

THE CEICO CO.  
44-256-B  
1.37 Ac.

PITTSBURGH CONSOLIDATION COAL COMPANY  
#7260-A

Scattered Bushes

Bushes



MICHAEL BAKER JR., CONSULTING ENGINEERS  
ROCHESTER, PENNSYLVANIA

DATE: 3-23-59

STATE OF OHIO  
DEPARTMENT OF HIGHWAYS  
RIGHT OF WAY PLANS  
STATE HIGHWAY NO. 1  
C-44  
S.R. NO. 306 STA 250+00 TO STA 262+00

Designed	Drawn	Traced	Checked	Reviewed Date	Revised
T.L.	J.S.	K.A.	R.G.		