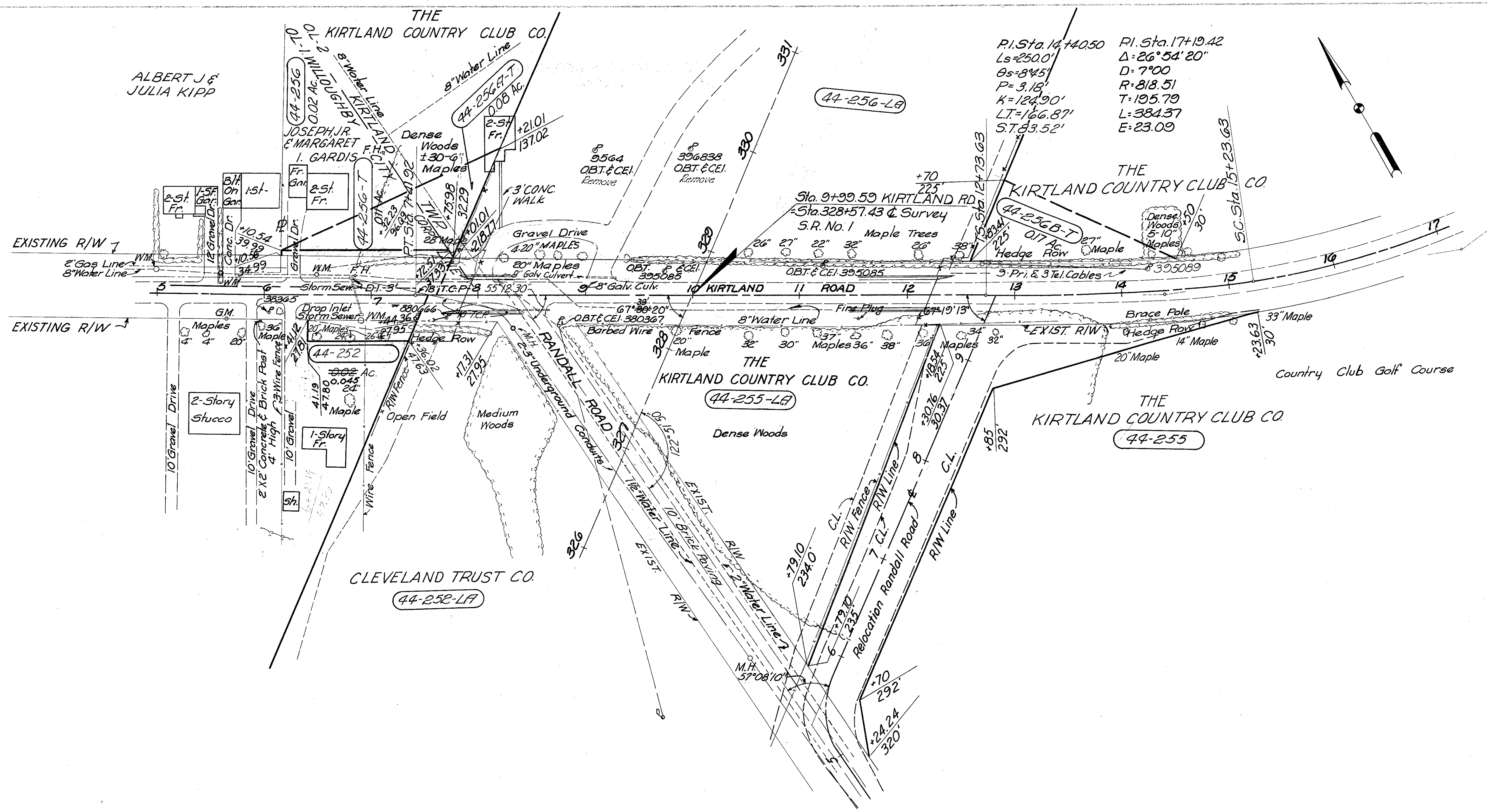
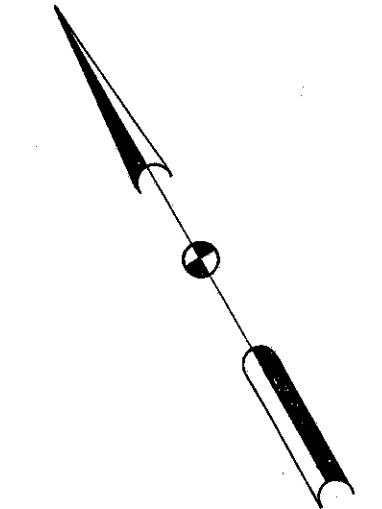


LAKE COUNTY  
LAK-1-4.02  
LIMITED ACCESS  
R/W  
18 of 22



P.I. Sta. 14+40.50  
 Ls=250.0'  
 θs=84.5'  
 P=3.18  
 K=124.90'  
 LT=166.87'  
 ST. 83.52'  
 P.I. Sta. 17+19.42  
 Δ=26°54'20"  
 D=7°00'  
 R=818.51  
 T=195.79  
 L=384.37  
 E=23.09

MICHAEL BAKER, JR., CONSULTING ENGINEERS ROCHESTER, PENNSYLVANIA					
DATE:	STATE OF OHIO DEPARTMENT OF HIGHWAYS RIGHT OF WAY PLANS				
3-23-59	STATE HIGHWAY NO. 1				
10-8-59	C-44 KIRTLAND ROAD				
Designed	Drawn	Traced	Checked	Reviewed Date	Revised
J.S.	R.P.	K.A.	J.P.		