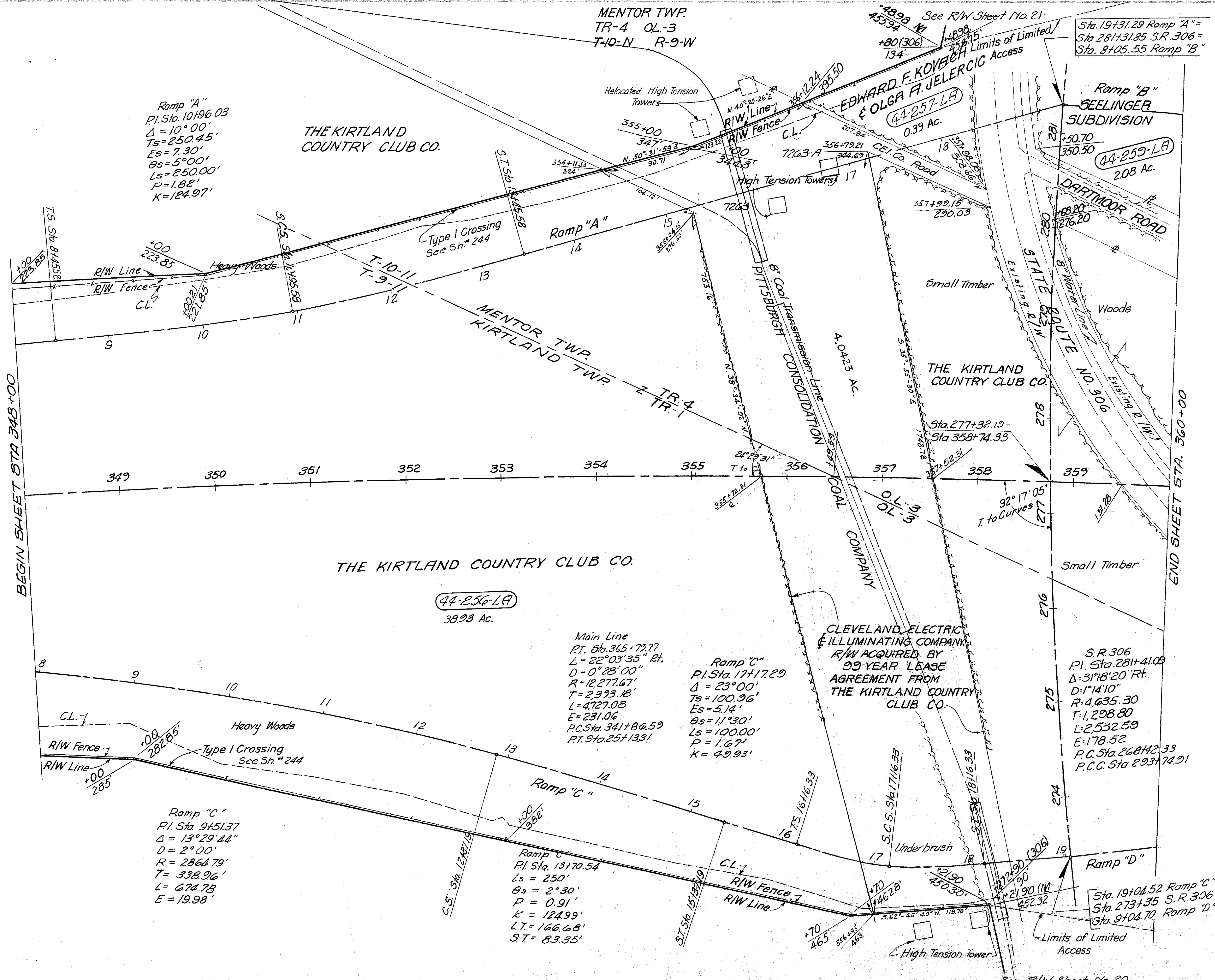


LAKE COUNTY
LAK-I-4.02
LIMITED ACCESS

R/W
14 of 22



DESCRIPTION OF PITTSBURGH CONSOLIDATION COAL COMPANY'S RELOCATION PLAN:
 Abandon 717 L.F. 10" Pipeline Sta. 356+60,
 Place 791 L.F. of 10" Pipeline and 640' L.F.
 of 16" Casing Under Mainline and Ramps
 "A & C" to Intercept Existing Line Approx.
 500' feet North Sta. 350+75

DESCRIPTION OF CLEVELAND ELECTRIC ILLUMINATING COMPANY'S RELOCATION PLAN:
 Remove & Replace Towers Nos. 7263 and 7263A.
 on C.E.I.C. 132 K.V. Line at Sta. 356 ±.

REVISIONS		
5-10-63	Description of C.E.I. Lease corrected.	A.M.

2028 Lin. Ft. Type "D" Fence

MICHAEL BAKER JR. CONSULTING ENGINEERS
 ROCHESTER, PENNSYLVANIA

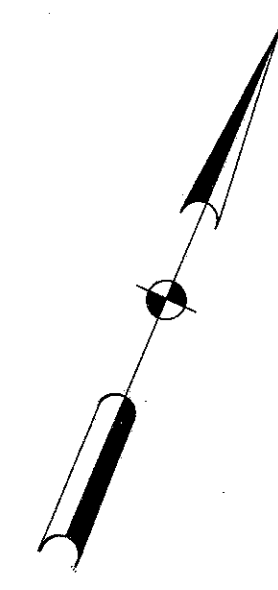
DATE: 3-23-59

STATE OF OHIO
DEPARTMENT OF HIGHWAYS
RIGHT OF WAY PLANS
 STATE HIGHWAY NO. 1
 C-44
 STA. 348+00 TO STA. 360+00

Designed	Drawn	Traced	Checked	Reviewed	Date	Revised
J.P.	K.A.	K.A.	R.G.			

BEGIN SHEET STA 348+00

END SHEET STA. 360+00



See R/W Sheet No. 20