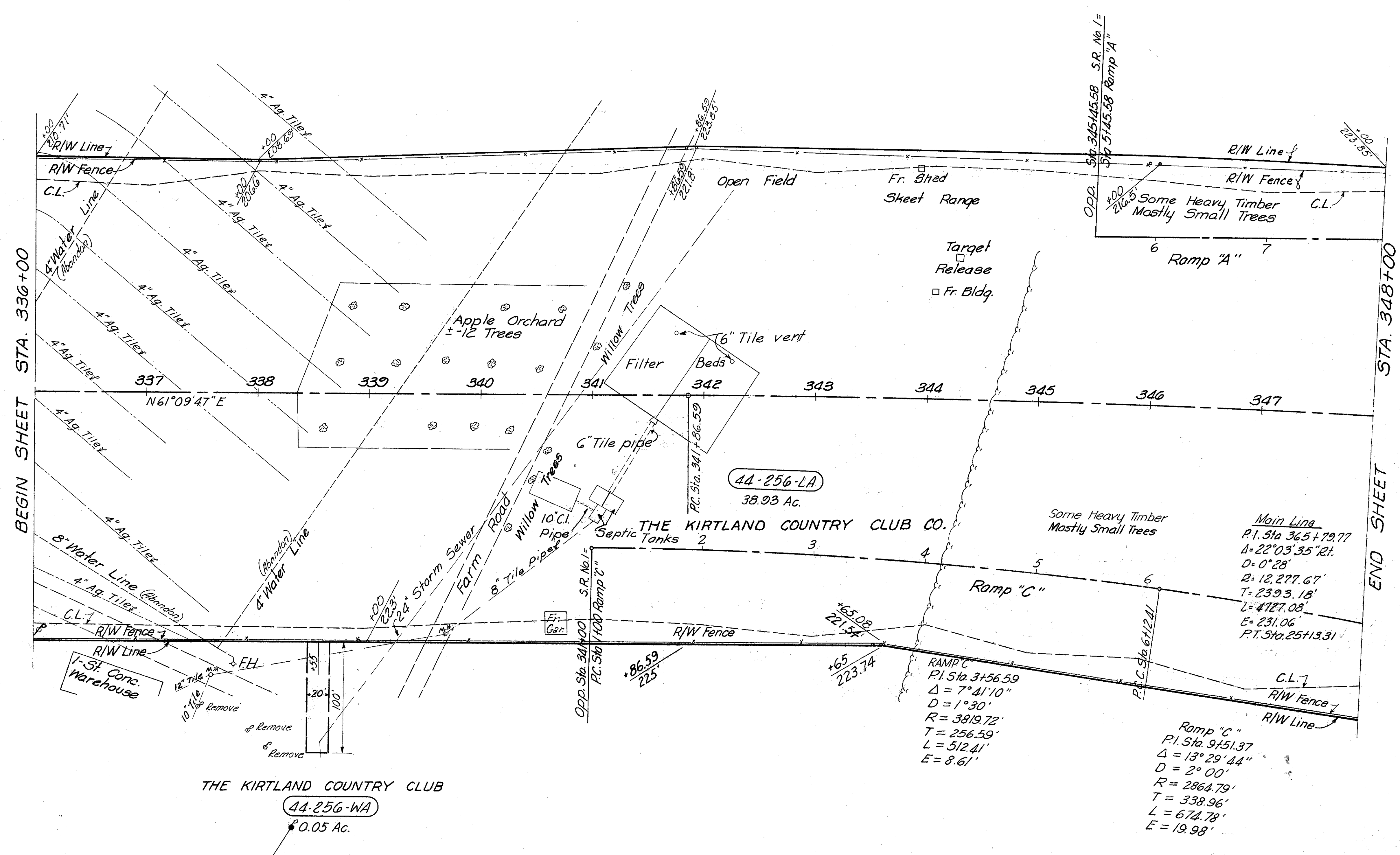
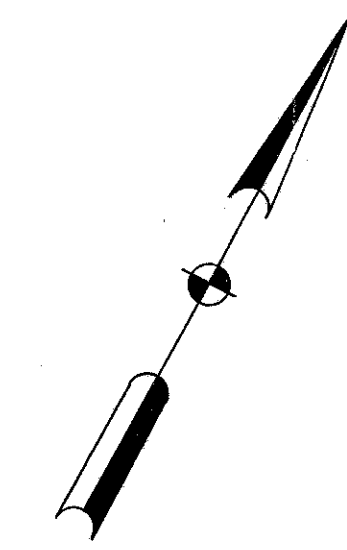


LAKE COUNTY  
LAK-1-4.02  
LIMITED ACCESS

R/W  
13 of 22

KIRTLAND TOWNSHIP  
TRACT 1 OL-2  
T-9-N R-10-W



STRUCTURES TO BE REMOVED  
Parcel No. 44-256 LA.  
1-Fr. Garage  
1-Fr. Shed

THE KIRTLAND COUNTRY CLUB  
44-256-WA  
0.05 Ac.

Main Line  
P.I. Sta. 36.5+79.77  
 $\Delta = 22^{\circ}03'35''$  R/L  
D = 0'28"  
R = 12,277.67'  
T = 2393.18'  
L = 4727.08'  
E = 231.06'  
P.T. Sta. 25+13.31'

RAMP C  
P.I. Sta. 3+56.59  
 $\Delta = 7^{\circ}41'10''$   
D = 1'30"  
R = 3819.72'  
T = 256.59'  
L = 512.41'  
E = 8.61'

Romp "C"  
P.I. Sta. 9+51.37  
 $\Delta = 13^{\circ}29'44''$   
D = 2'00"  
R = 2864.79'  
T = 338.96'  
L = 674.78'  
E = 19.98'

2409 Lin. Ft. Type "D" Fence

MICHAEL BAKER JR. CONSULTING ENGINEERS  
ROCHESTER, PENNSYLVANIA

DATE:  
9-23-59

STATE OF OHIO  
DEPARTMENT OF HIGHWAYS  
RIGHT OF WAY PLANS

STATE HIGHWAY NO. 1  
C-44  
STA. 336+00 TO STA. 348+00

Designed	Drawn	Traced	Checked	Reviewed Date	Revised
J.P.	R.P.	K.A.	R.G.		