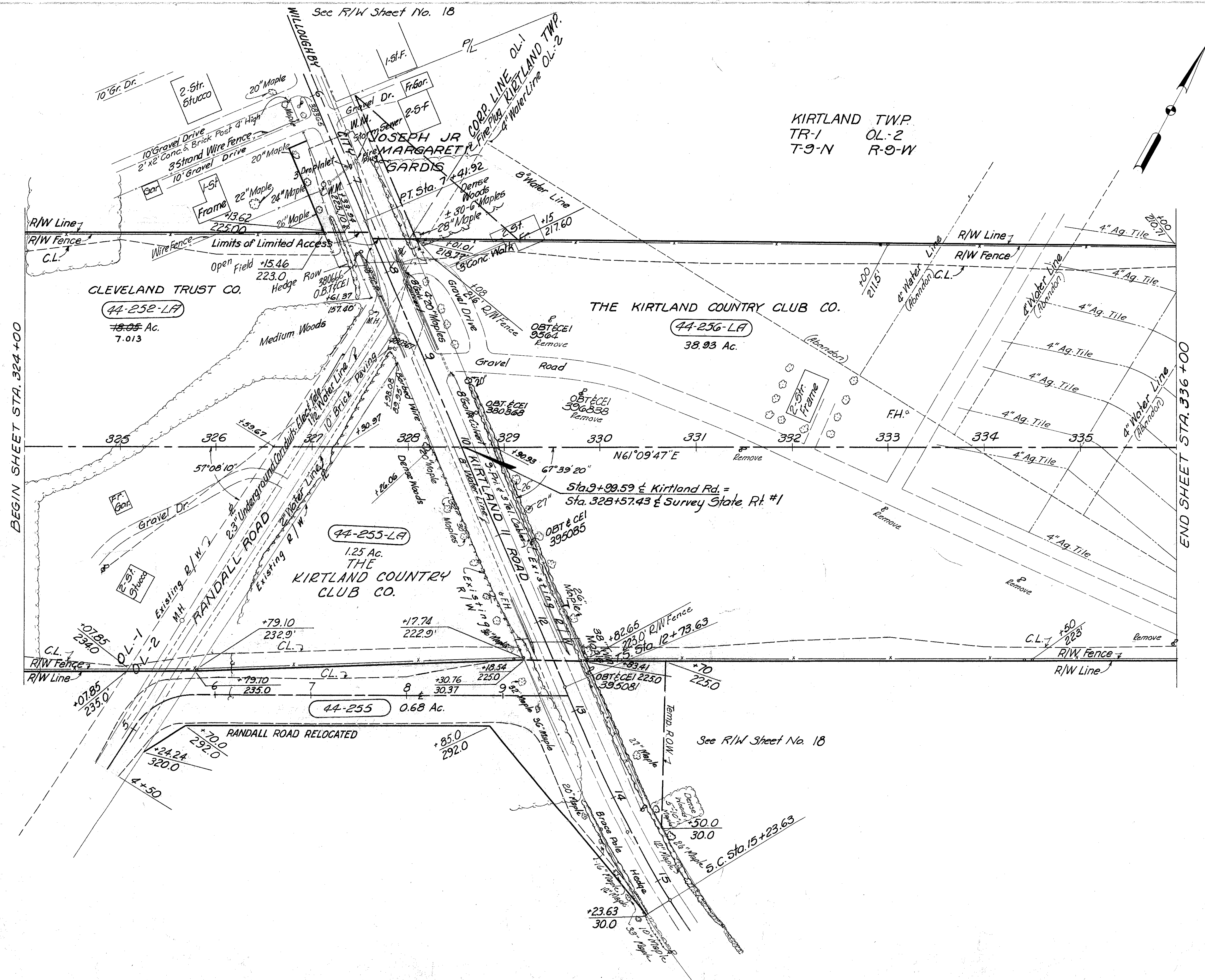


LAKE COUNTY
LAK-1-4.02
LIMITED ACCESS

R / W
12 of 22

KIRTLAND TWP.
TR-1 OL-2
T-9-N R-9-W



CLEVELAND ELECTRIC ILLUMINATING COMPANY'S
RELOCATION PLAN: SHEETS 325-326 & 331

Remove -	1 35'-5
	1 40'-3
	1 35'-5
	1 35'-5
	1 35'-5
	1 45'-3
	1 40'-3
Set -	1 25'-3
	1 30'-5
	1 35'-5

STRUCTURES TO BE REMOVED
Parcel No. 44-252 LA
1-2 Story Stucco Res.
1-Frame Garage

Parcel No. 44-256 LA
2-2 Story Fr. Res.

2445 Lin. Ft. Type "D" Fence

MICHAEL BAKER JR., CONSULTING ENGINEERS
ROCHESTER, PENNSYLVANIA

DATE:
3-23-59
10-8-59

STATE OF OHIO
DEPARTMENT OF HIGHWAYS
RIGHT OF WAY PLANS
STATE HIGHWAY NO. 1
C-44
STA. 324+00 TO STA. 336+00

Designed	Drawn	Traced	Checked	Reviewed Date	Revised
RG.	J.S.	L.W.	J.P.		