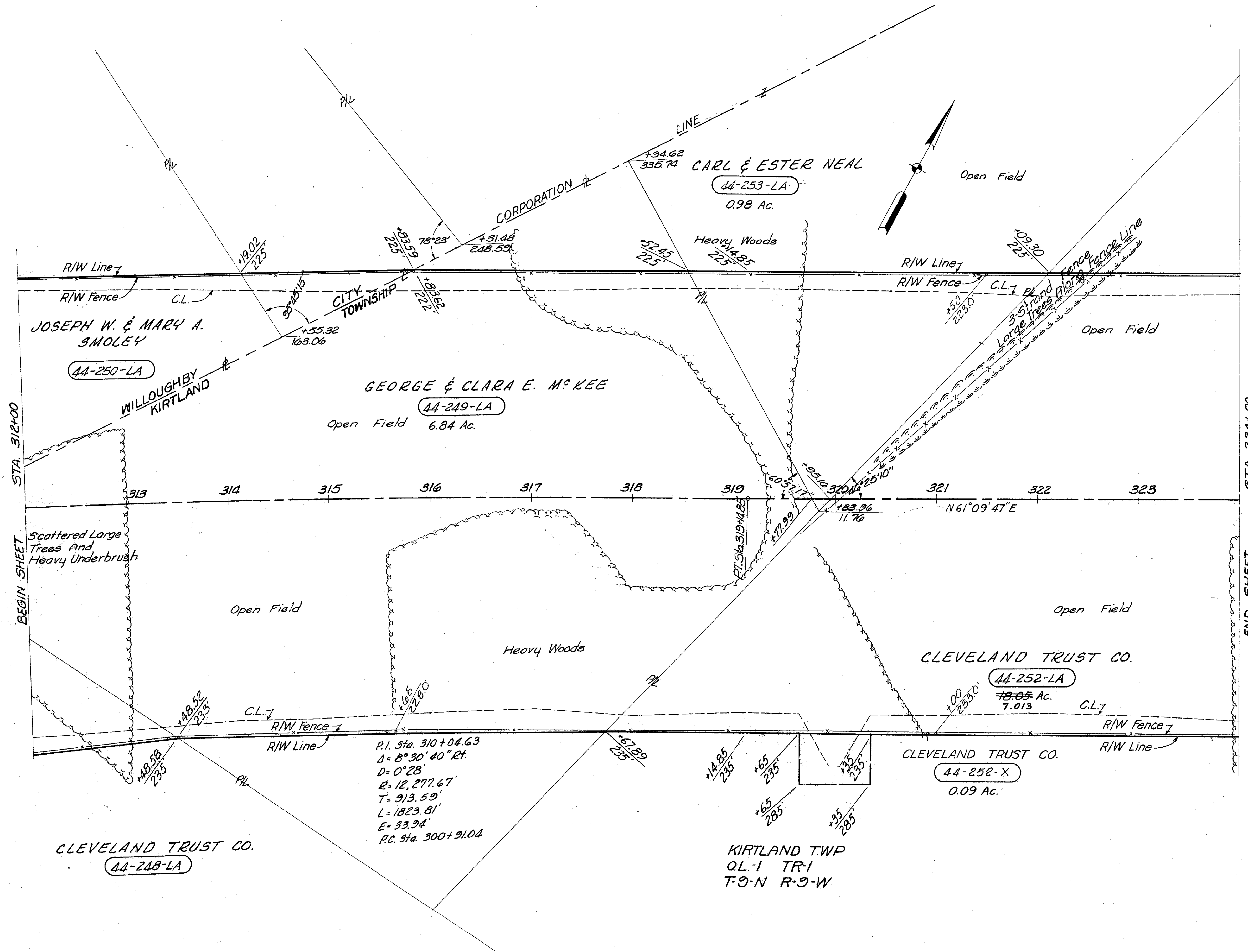


LAKE COUNTY
LAK-1-4.02
LIMITED ACCESS
R/W
11 of 22



2404 Lin. Ft. Type "D" Fence

MICHAEL BAKER JR., CONSULTING ENGINEERS ROCHESTER, PENNSYLVANIA					
STATE OF OHIO DEPARTMENT OF HIGHWAYS RIGHT OF WAY PLANS					
STATE HIGHWAY NO. 1 C-44 STA. 312+00 TO STA. 324+00					
DATE:	Designed	Drawn	Traced	Checked	Reviewed Date
3-23-59 10-8-59	J.P.	R.G.	L.W.	E.H.	