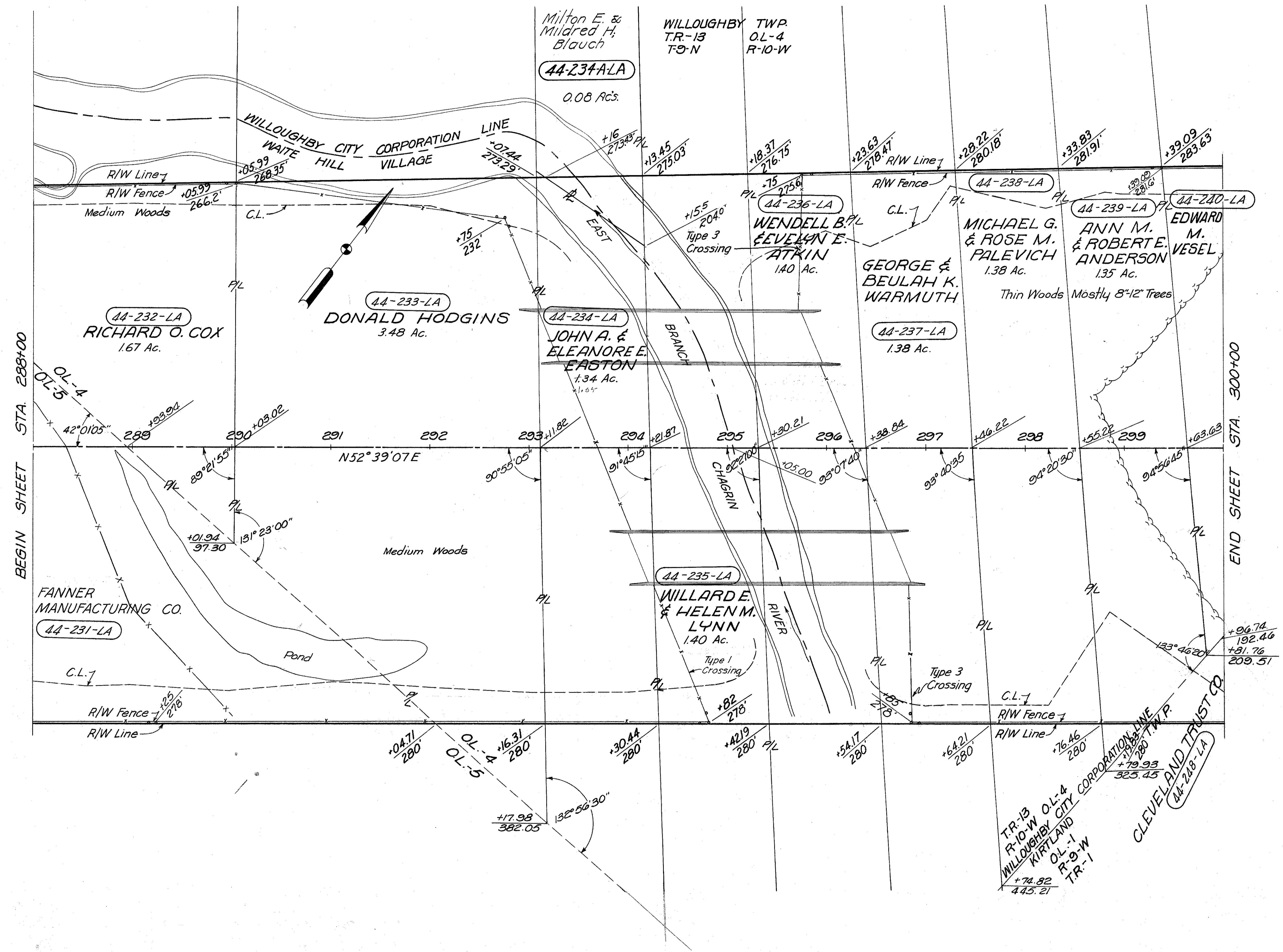


LAKE COUNTY  
LAK-1-4.02  
LIMITED ACCESS  
R/W  
9 of 22



2784 Lin. Ft. Type "D" Fence

MICHAEL BAKER JR., CONSULTING ENGINEERS ROCHESTER, PENNSYLVANIA					
STATE OF OHIO DEPARTMENT OF HIGHWAYS RIGHT OF WAY PLANS STATE HIGHWAY NO. 1 C-44 STA. 288+00 TO STA. 300+00					
DATE: 3-23-59 5-15-59	Designed	Drawn	Traced	Checked	Reviewed Date
	R.G.	R.P.	F.H.	J.P.	