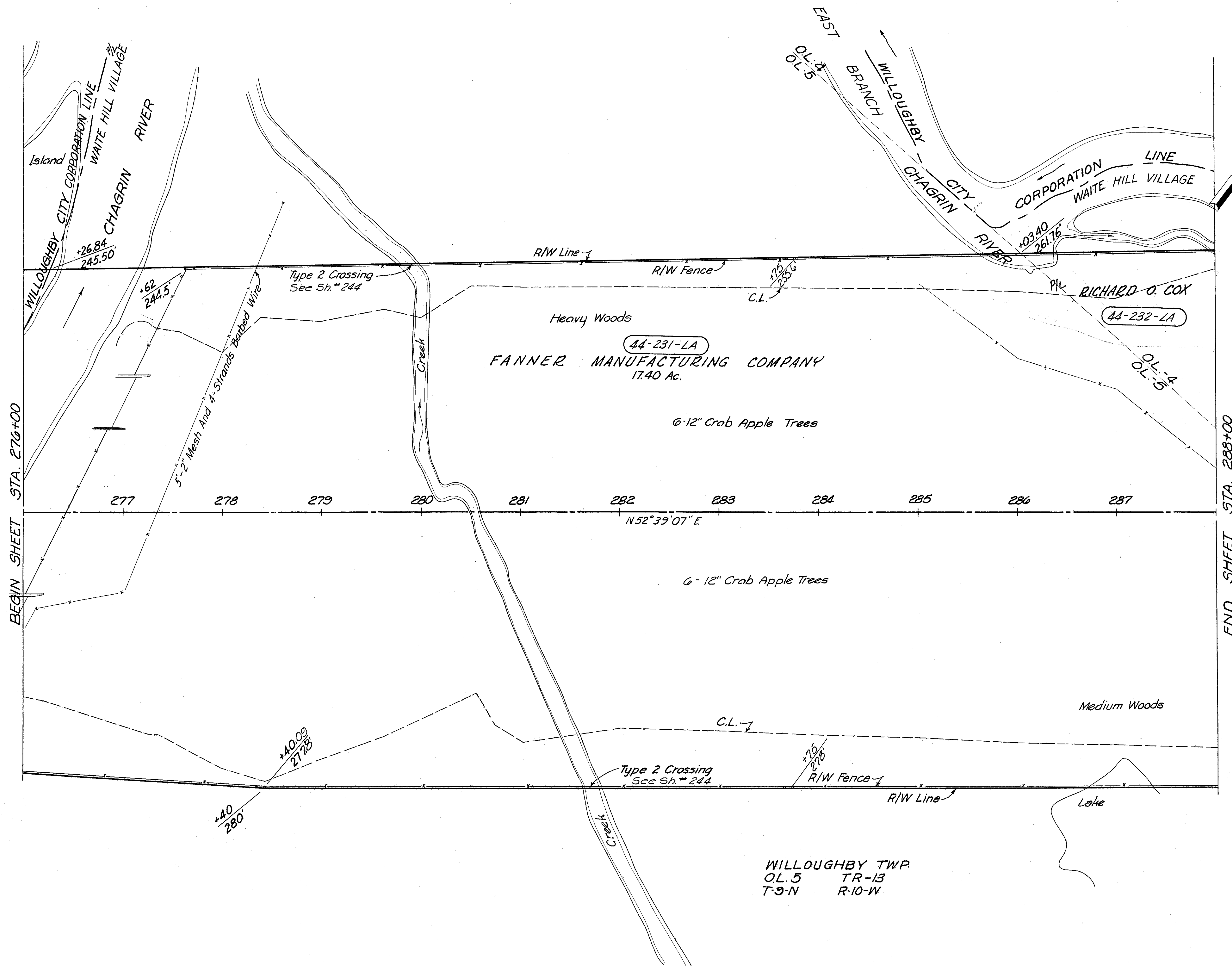


LAKE COUNTY
LAK -1-4.02
LIMITED ACCESS
R/W
8 of 22



WILLOUGHBY TWP.
OL:5 TR-13
T-3-N R-10-W

2441 Lin. Ft. Type 'D' Fence

DATE: 3-23-59		MICHAEL BAKER JR. CONSULTING ENGINEERS ROCHESTER, PENNSYLVANIA			
STATE OF OHIO DEPARTMENT OF HIGHWAYS RIGHT OF WAY PLANS STATE HIGHWAY NO. 1 C-44 STA. 276 + 00 TO STA. 288 + 00					
Designed	Drawn	Traced	Checked	Reviewed Date	Revised
R.G.	M.P.	K.A.	J.P.		