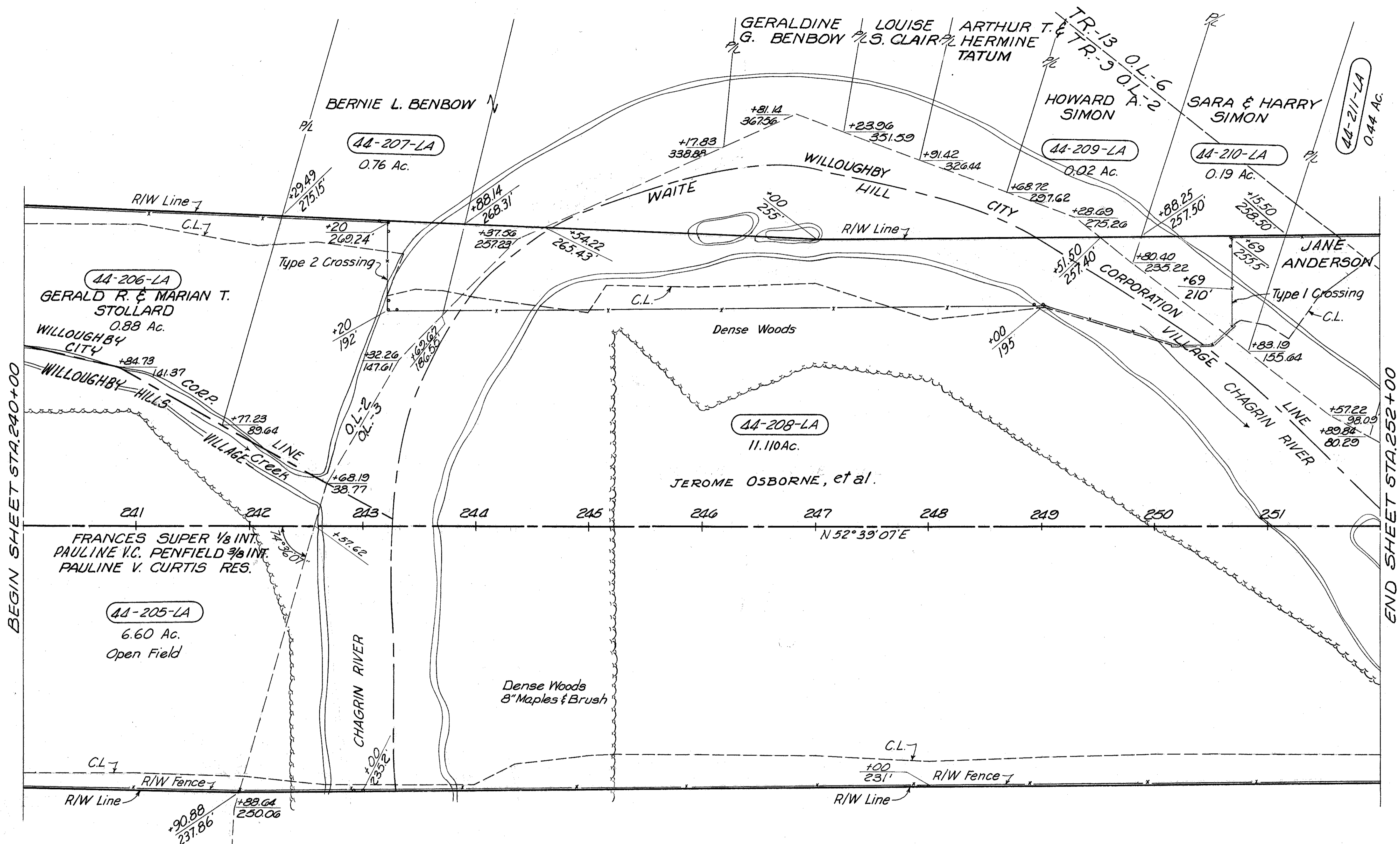
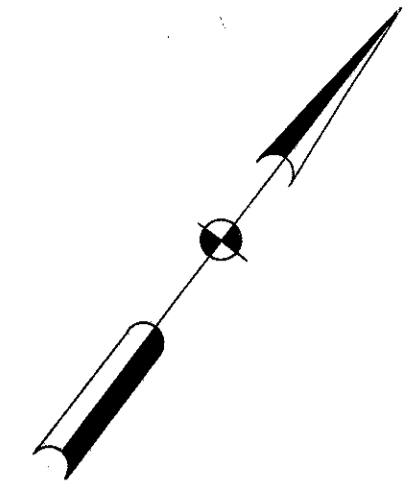


LAKE COUNTY  
LAK-1-4.02  
LIMITED ACCESS  
  
R/W  
5 of 22



BEGIN SHEET STA. 240+00

END SHEET STA. 252+00

WILLOUGHBY TWP.  
LOT-3 TRACT-9  
T-9-N R-10-W

2470 Lin. Ft. Type 'D' Fence

MICHAEL BAKER JR., CONSULTING ENGINEERS ROCHESTER, PENNSYLVANIA					
STATE OF OHIO DEPARTMENT OF HIGHWAYS RIGHT OF WAY PLANS STATE HIGHWAY NO. 1 C-44 STA. 240+00 TO STA. 252+00					
DATE: 3-23-59 3-8-60	Designed J.P.	Drawn M.P.	Traced D.L.	Checked R.G.	Reviewed Date Revised