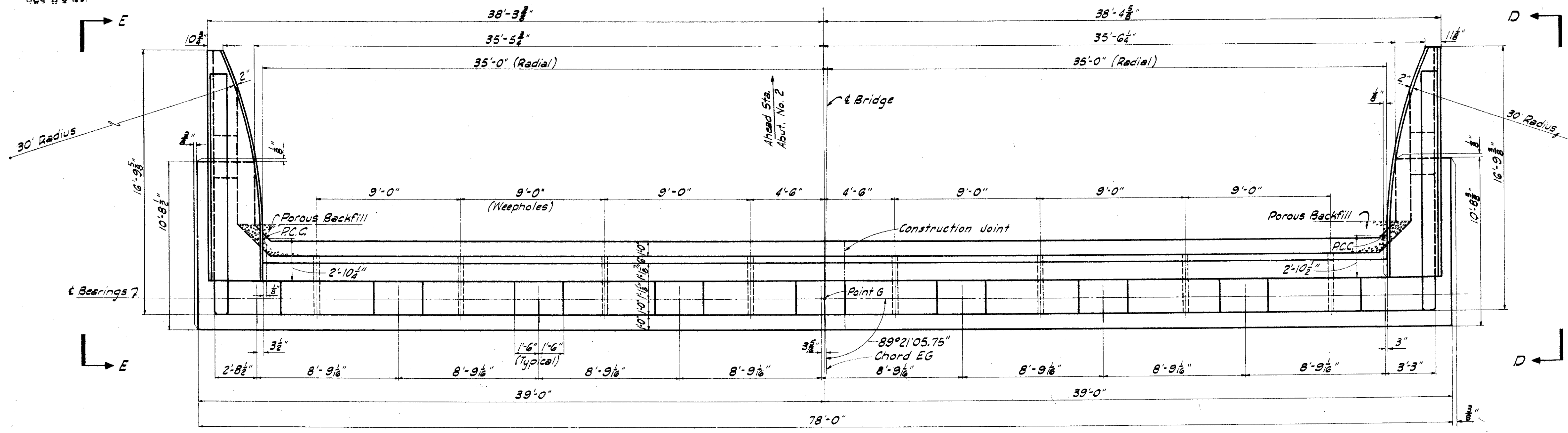


MICROFILMED
DEC 23 1987

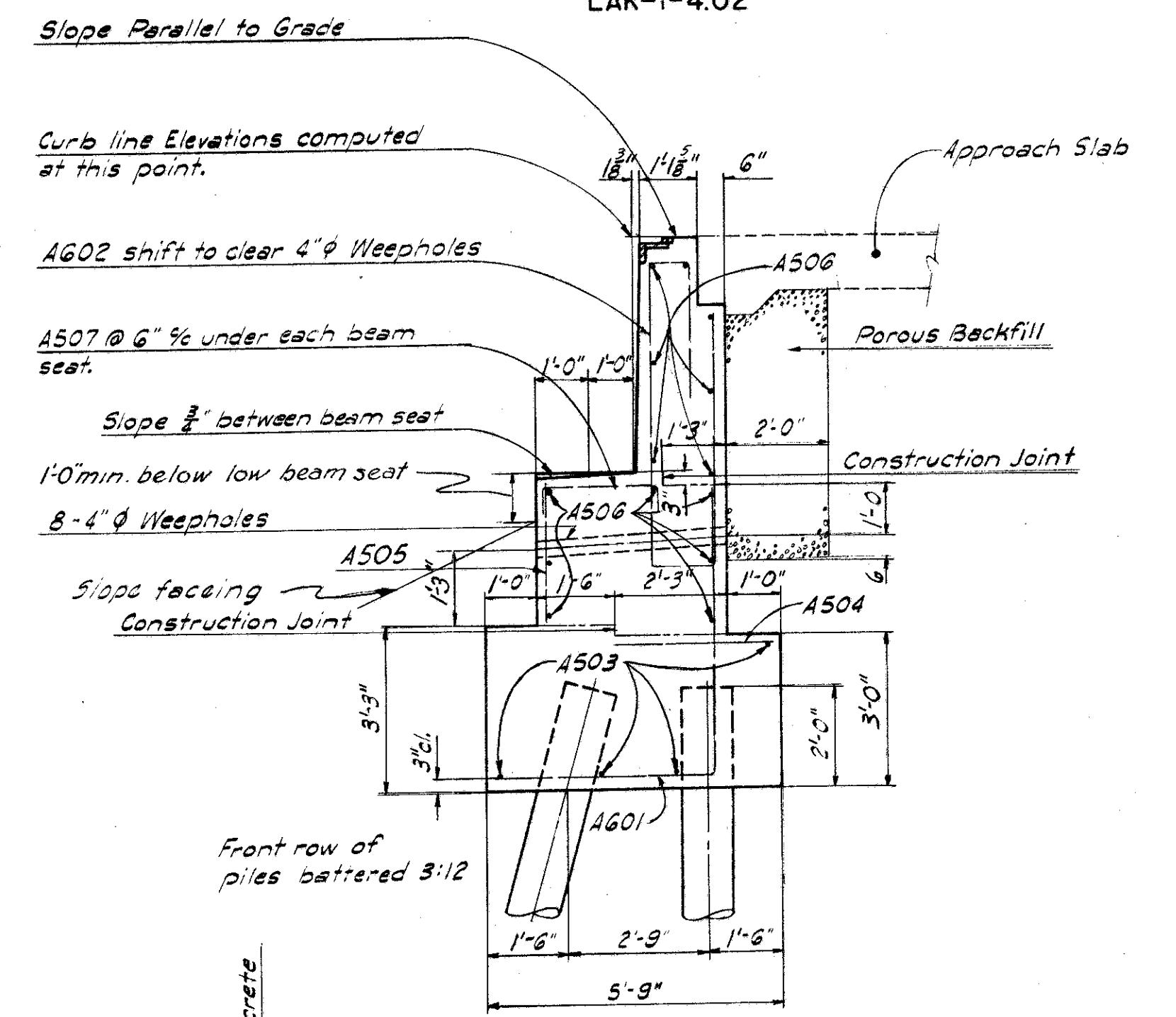
FED. RD. DIVISION	STATE	PROJECT	TYPE FUNDS
2	OHIO	I-1103(20)	

LAKE COUNTY
LAK-1-4.02

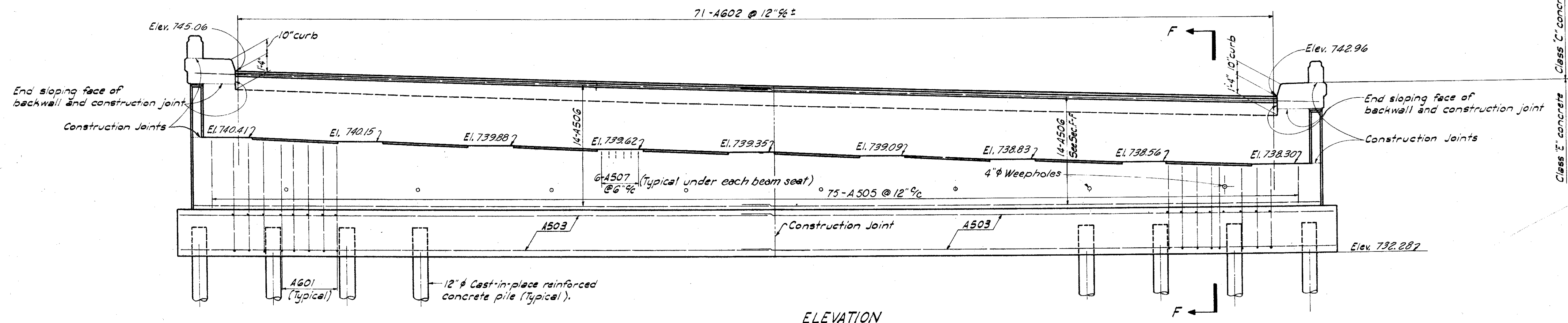
308s
333



PLAN



SECTION F-F



ELEVATION

- NOTES**
- All piles to be 12" ϕ cast-in-place reinforced concrete piles driven to a minimum bearing capacity of 30 tons.
 - All abutment concrete shall be Class "E".
 - All parapet concrete shall be Class "C".
 - Porous backfill 2 feet thick full length of abutment shall extend up to the underside of the approach slab.
 - Guard rail end connection to be included with railing for payment.
 - Clearance of reinforcing steel from face of concrete shall be 2" unless otherwise shown.
 - Concrete above bridge seat construction joint shall not be placed until after the steelwork is erected, but shall be placed before placing the deck slab.
 - Steel end dam shall be used as a template for the top of the backwall.

This sheet supersedes sheet 308. 3-21-60.

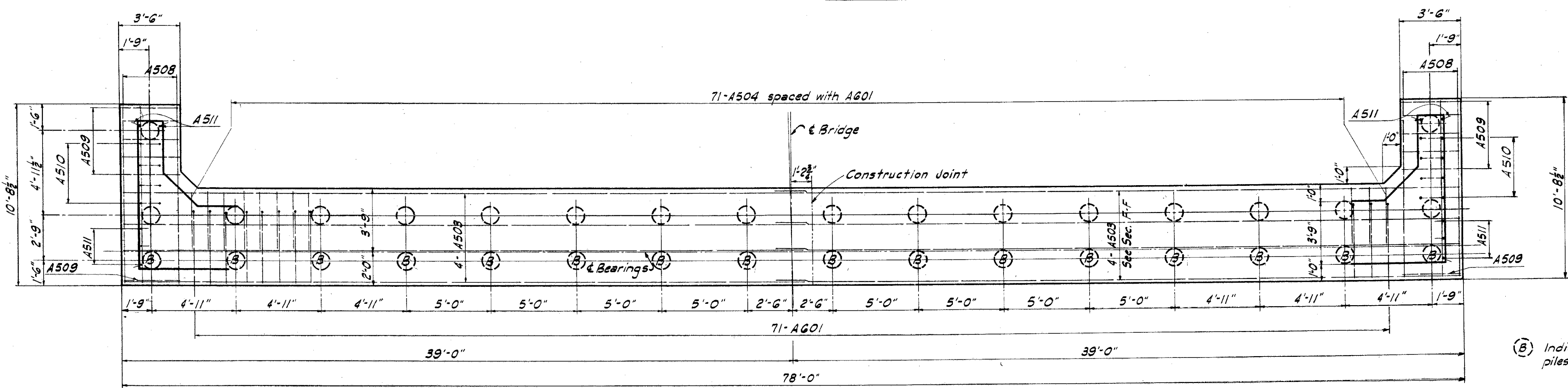
Work this sheet with "Abutments No. 2 Wingwall Elevation and Section" sheet.

MICHAEL BAKER JR., CONSULTING ENGINEERS
ROCHESTER, PENNSYLVANIA

ABUTMENT NO. 2
BRIDGE NO. LAK-1-0665
UNDER STATE ROUTE 306

LAKE COUNTY		STA. 358+74.33	
Designed	Drawn	Traced	Checked
C.R.U.	B.C.W.	B.C.W.	J.V.W.
Reviewed Date		Revised	
W.D.B. 4-28-58		5-14-60	

(B) Indicates battered piles. See Sec. F.F.



FOOTING PLAN