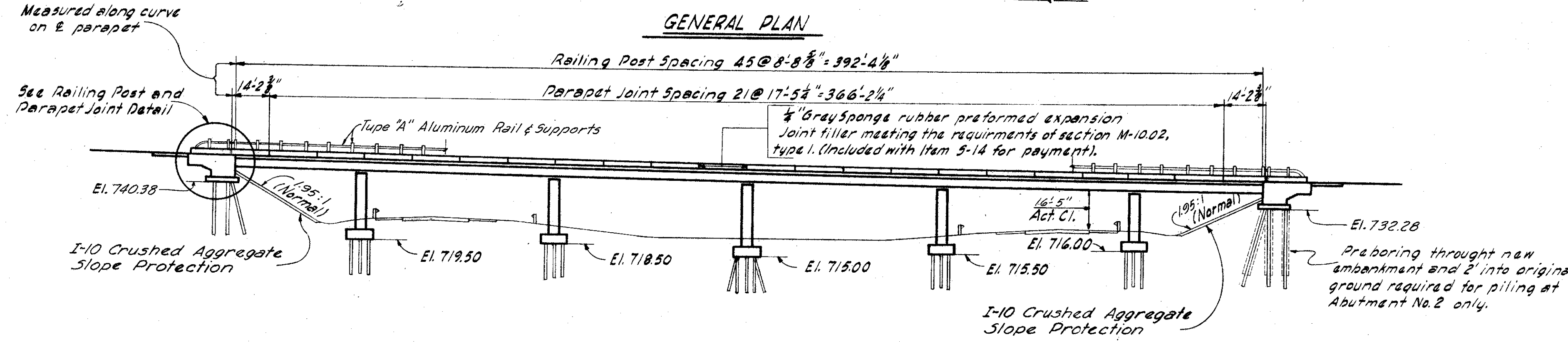
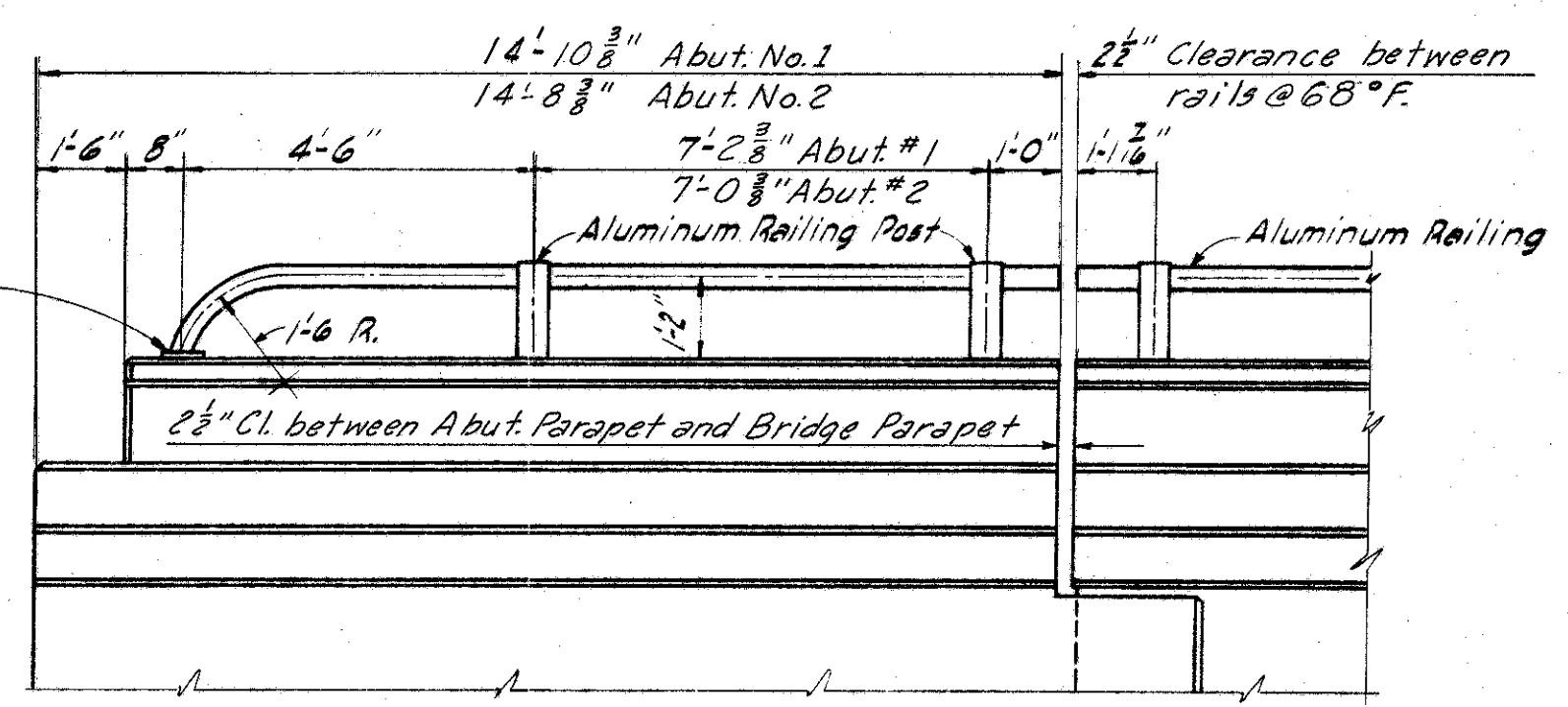


GENERAL NOTES

- Reference shall be made to Standard Drawings CSB-2-56, Sheets 2 & 3 of 6 revised 2-2-53, RB-1-55 dated 2-2-53, AR-1-57 revised 2-2-53
- Design Specifications: This structure conforms to the requirements of "Design Specifications for Highway Structures" of the State of Ohio, Department of Highways, dated 9-1-57, revised 2-21-58.
- Loading: C.F. 2000 (57).
- Welding of structural steel shall be Class "A", except as shown. Any welds shown as field may, at the option of the Contractor, be made in the shop.
- Excavation Quantities includes the removal of fill material between surface of proposed embankment and bottom of abutment.
- Backfill behind abutments shall be made with materials meeting the requirements of Sec. I-22 and shall be compacted in accordance with requirements for embankment compaction. Payment for backfill shall be included with unclassified excavation
- Embankment shall be placed to subgrade elevation for a distance of approximately 200 ft. beyond the bridge limits as early as practicable in the construction procedure and before work is begun on Abut. Abutments should be placed as late as practicable, with a minimum lapse of 30 days between completion of the embankment and starting of work on the abutments.
- Piles: All piles shall be 12" cast in place reinforced concrete piles. Piles shall be driven to a minimum bearing capacity of 30 tons per pile.



ELEVATION

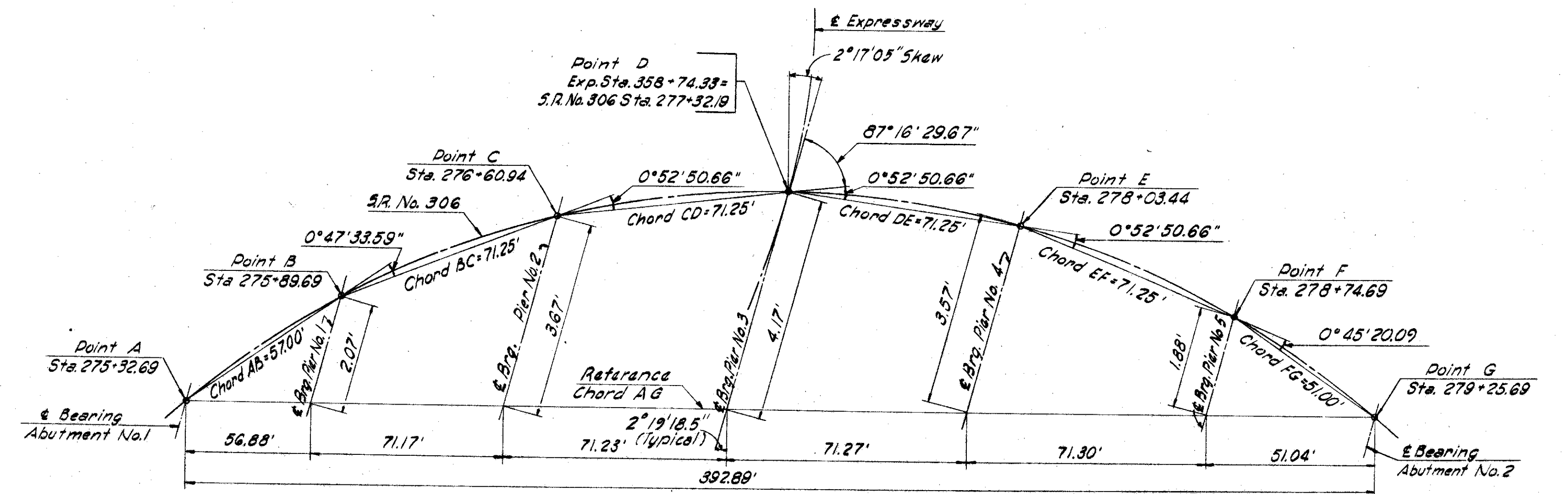


TYPICAL RAILING POST & PARAPET JOINT DETAIL

This sheet supersedes sheet 306. 3-21-60.

GRADE DATA

P.V. Sta.	280+45
Elev.	741.81
V.C.	400'
M.O.	1.00



LAYOUT OF STRUCTURE

MICHAEL BAKER JR., CONSULTING ENGINEERS  
ROCHESTER, PENNSYLVANIA

**GENERAL PLAN & ELEVATION**  
BRIDGE NO. LAK-1-0665  
UNDER STATE ROUTE 306

LAKE COUNTY				STA. 358+74.33	
Designed	Drawn	Traced	Checked	Reviewed-Date	Revised
C.P.J.	B.M.C.	A.C.M.	Y.G.	W. R. B. 4-28-58	3-14-60