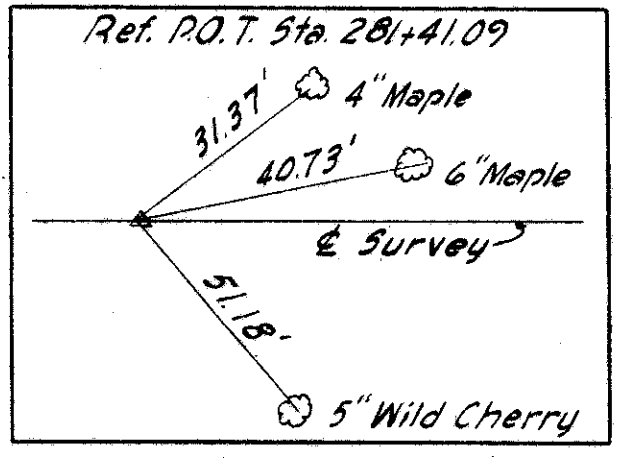
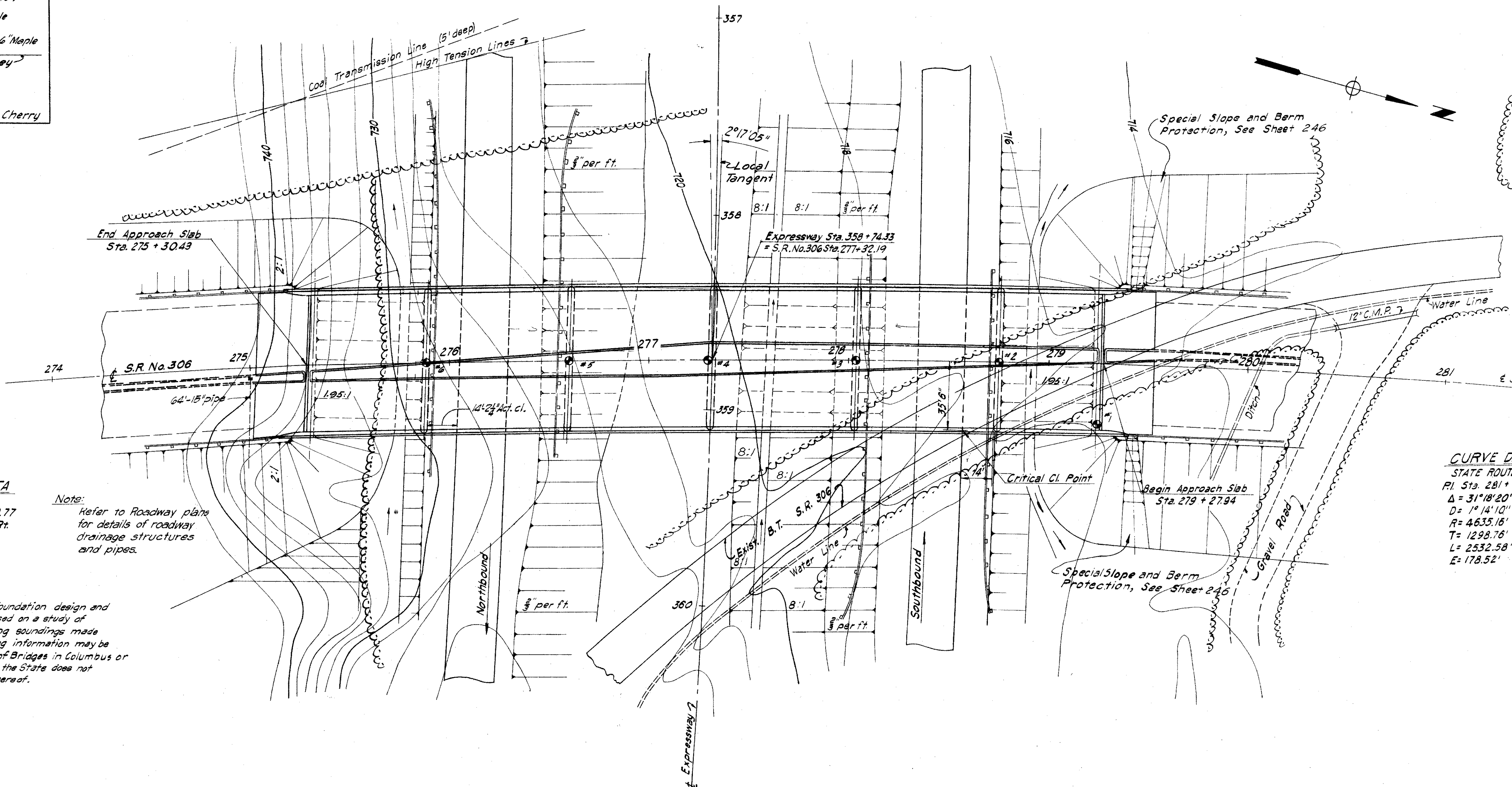


9.18 MI. ± NORTH OF MAYFIELD HEIGHTS  
LAKE COUNTY  
LAK-1-4.02



MICROFILMED  
DEC 23 1987



**CURVE DATA**  
EXPRESSWAY  
P.I. Sta. 365 + 79.77  
Δ = 22°03'35" Rt.  
D = 0° 28'  
T = 2393.18'  
L = 4727.08'  
R = 12,277.66'

Note:  
Refer to Roadway plans  
for details of roadway  
drainage structures  
and pipes.

FOUNDATION SOUNDINGS: Foundation design and foundation quantities are based on a study of borings and soil sampling soundings made at the site. This sounding information may be inspected in the Bureau of Bridges in Columbus or in the Division Office, but the State does not guarantee the accuracy thereof.

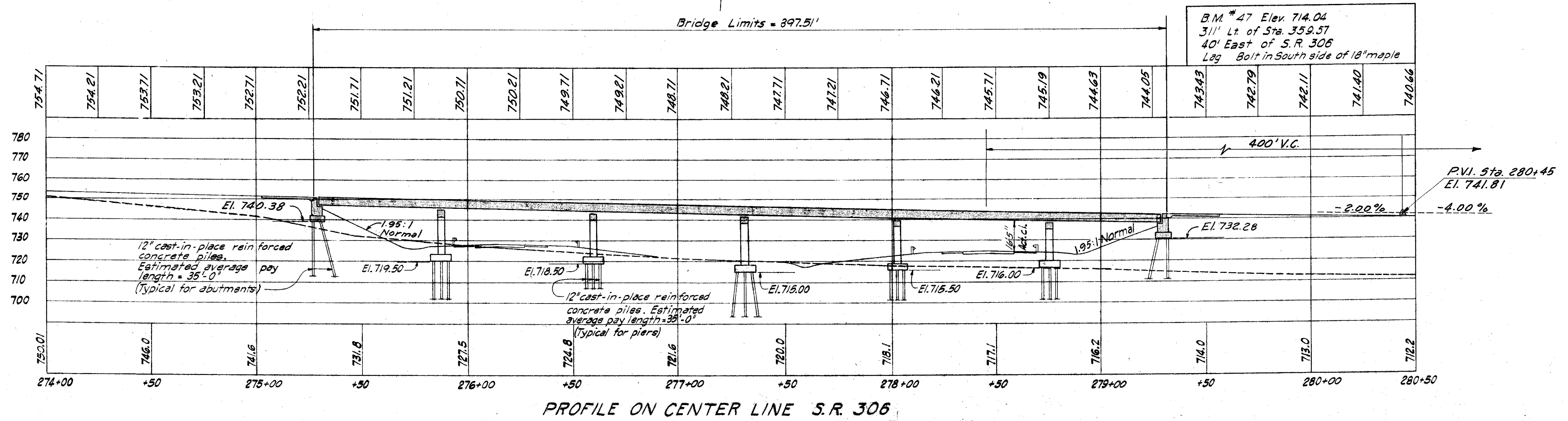
Note:  
P.G. Measured  
along S.R. 306

**CURVE DATA**  
STATE ROUTE 306  
P.I. Sta. 281 + 41.09  
Δ = 31°18'20" Rt.  
D = 1°14'10"  
R = 4635.16'  
T = 1298.76'  
L = 2532.58'  
E = 178.52'

⊙ Denotes boring locations

S.R. 306 Estimated 1955 V.P.D. # 1360.

This sheet supersedes  
sheet 305. 3-21-60.



B.M. # 47 Elev. 714.04  
311' Lt. of Sta. 359.37  
40' East of S.R. 306  
Lg Bolt in South side of 18' maple

**PROPOSED STRUCTURE**  
TYPE: Continuous steel beams with reinforced concrete deck & substructure.  
SPANS: 57'-0" 71'-25" 71'-25" 71'-25" 31'-0" % Brgs.  
ROADWAY: 70'-0" 1/4 of 2'-0" Safety Curbs  
LOAD FREQUENCY: C.F. = 2000(57)  
SKEW: 2°17' 05" L.F.  
WEARING SURFACE: 1" Monolithic Concrete  
APPROACH SLABS: Special Design (25' Long)  
ALIGNMENT: 1"14'10"  
SUPERELEVATION: .030' per ft

MICHAEL BAKER, JR., CONSULTING ENGINEERS  
ROCHESTER, PENNSYLVANIA

**SITE PLAN**  
BRIDGE NO. LAK-1-0665  
UNDER STATE ROUTE 306

LAKE COUNTY  
SCALE: 1" = 30'  
STA. 358+74.33

|          |            |          |          |
|----------|------------|----------|----------|
| PRESENT  | TOPOGRAPHY | PROPOSED | WORK     |
| Surveyed | Drawn      | Designed | Drawn    |
| Notes    | W.A.J.     | C.P.J.   | W.A.J.   |
|          |            |          | Checked  |
|          |            |          | Y.G.     |
|          |            |          | Reviewed |
|          |            |          | W.A.B.   |
|          |            |          | 4-28-58  |

Revised 3-14-60