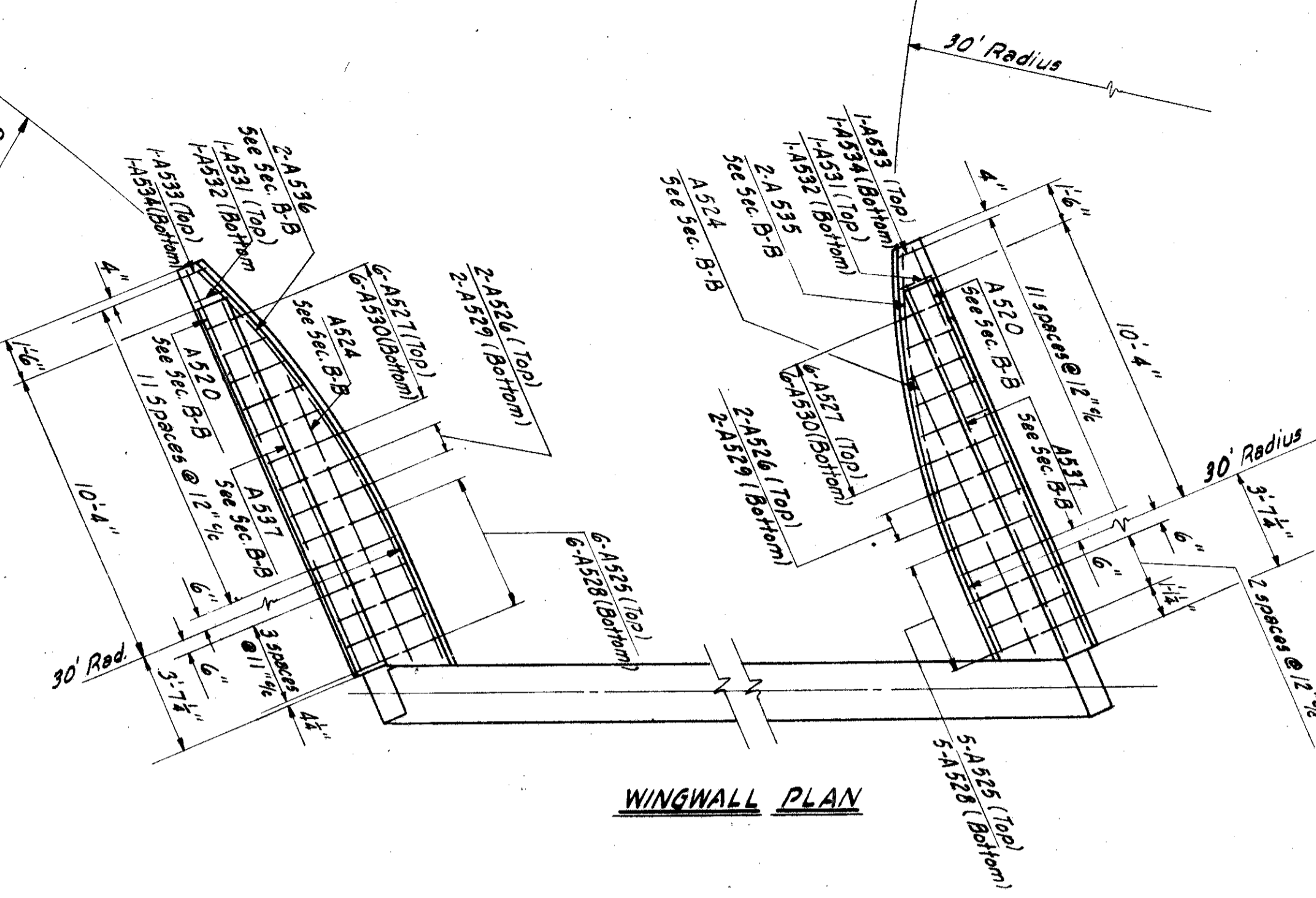
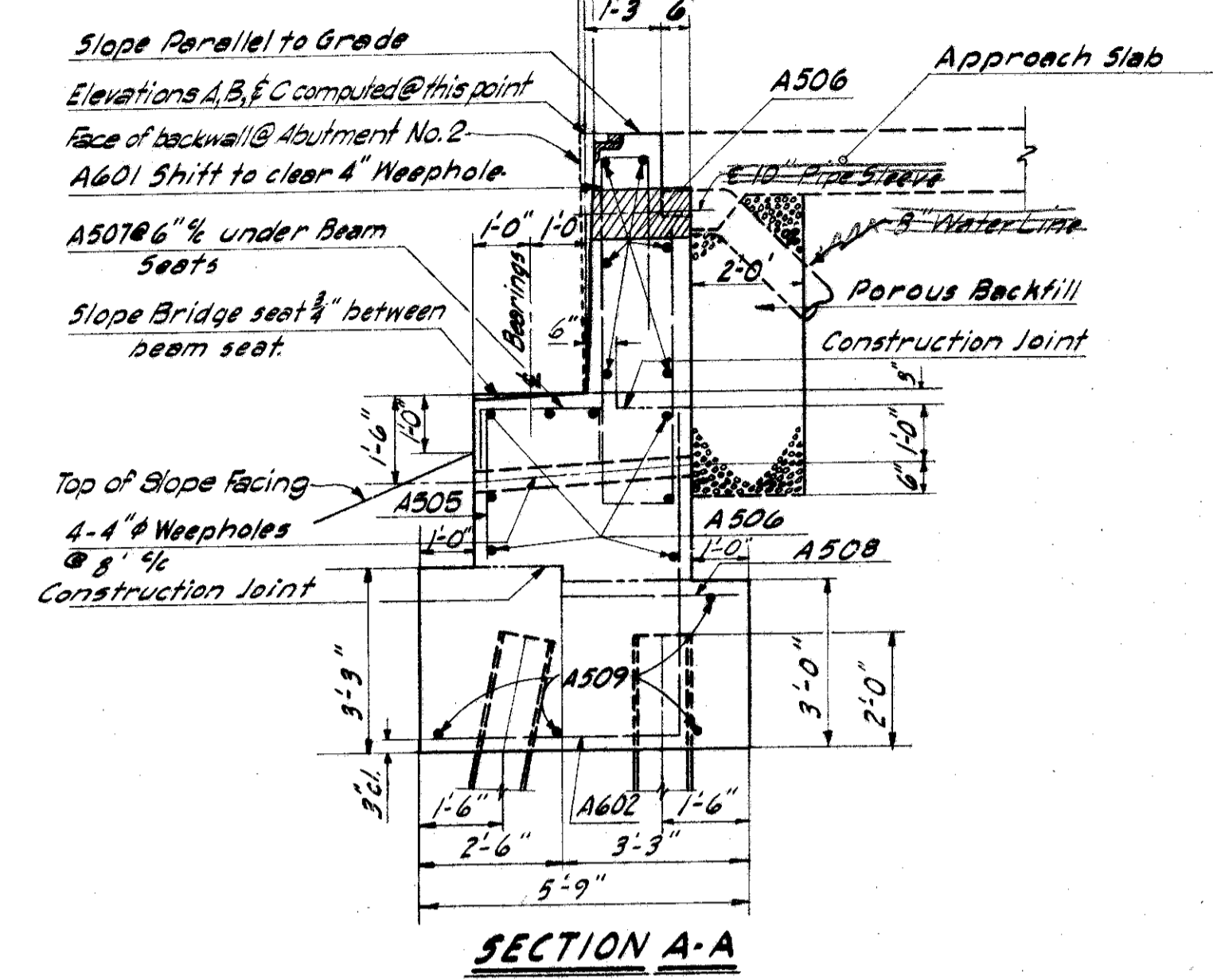


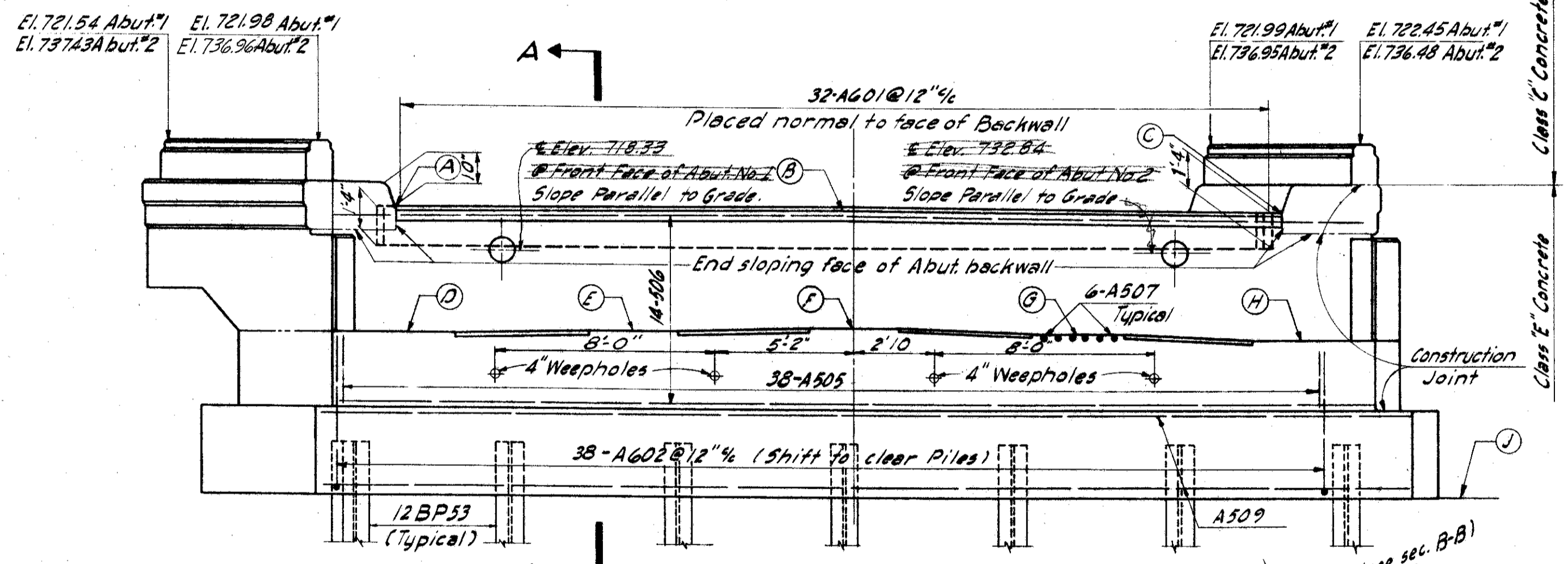
ABUTMENT PLAN



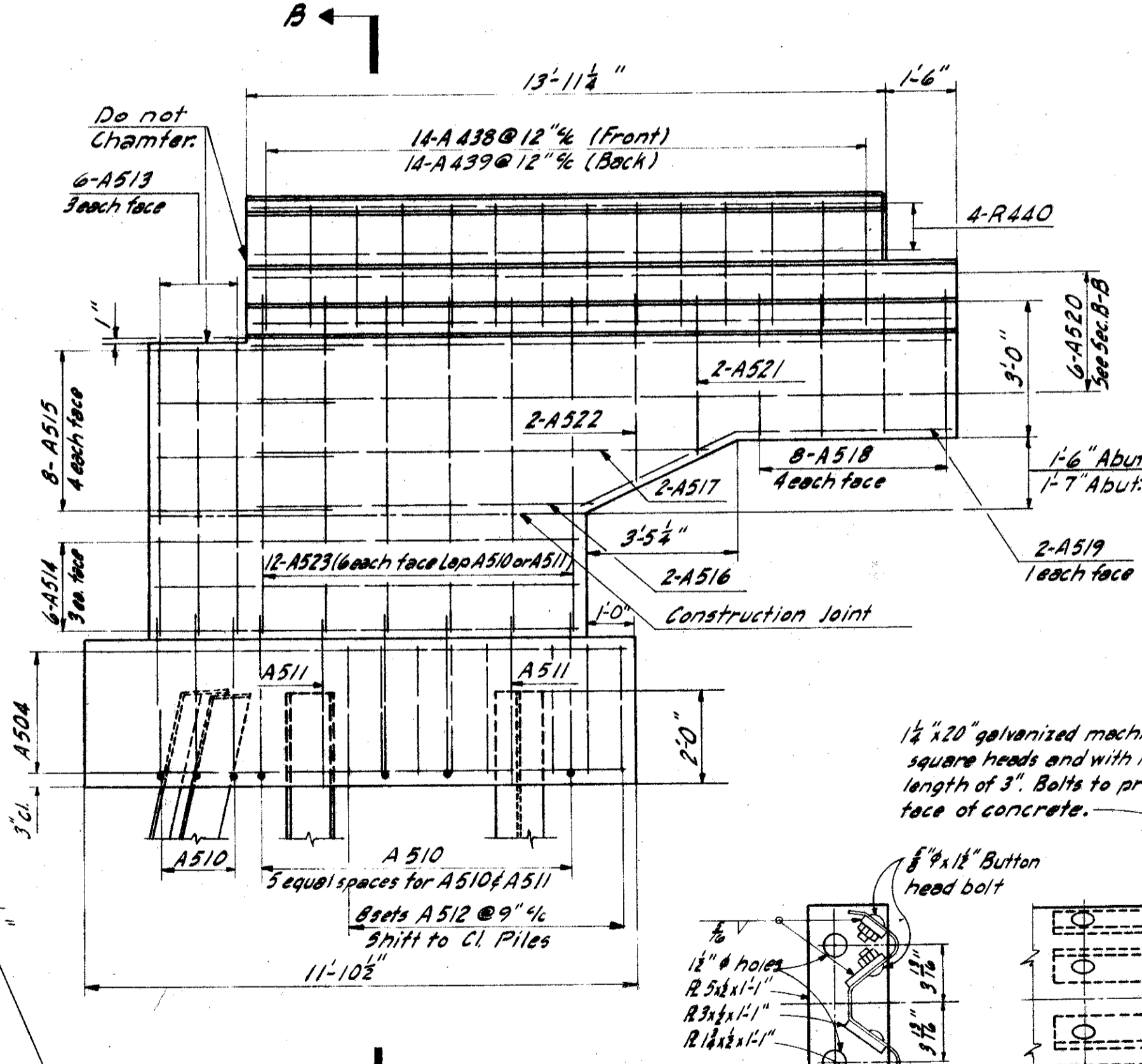
WINGWALL PLAN



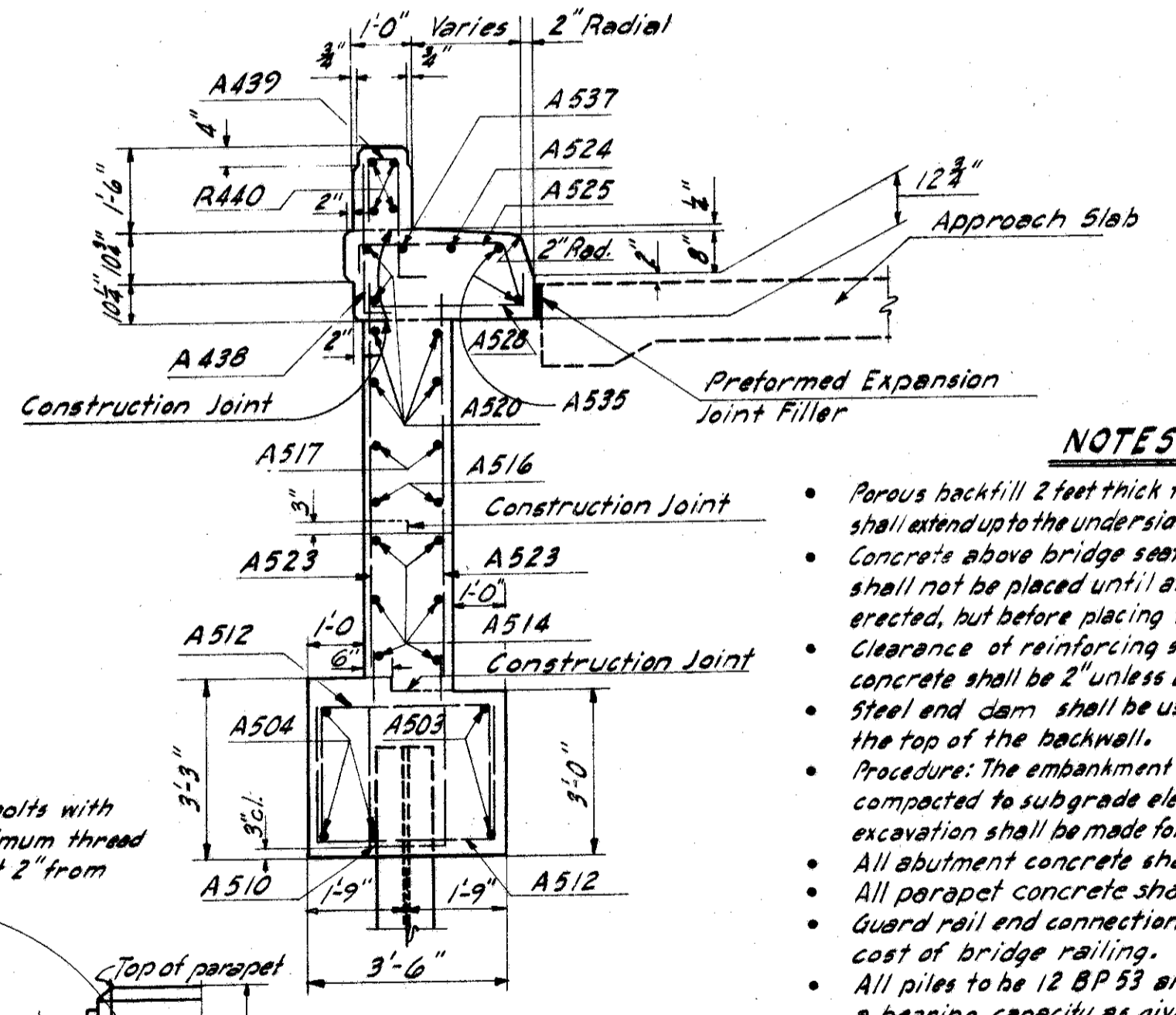
SECTION A-A



ABUTMENT ELEVATION



WINGWALL ELEVATION



SECTION B-B

- NOTES**
- Porous backfill 2 feet thick full length of abutment shall extend up to the underside of approach slab.
 - Concrete above bridge seat construction joint shall not be placed until after the steel work is erected, but before placing the deck slab.
 - Clearance of reinforcing steel from face of concrete shall be 2" unless otherwise shown.
 - Steel end clamp shall be used as a template for the top of the backwall.
 - Procedure: The embankment shall be placed and compacted to subgrade elevation, after which excavation shall be made for the abutments.
 - All abutment concrete shall be Class "C".
 - All parapet concrete shall be Class "C".
 - Guard rail end connection to be included in cost of bridge railing.
 - All piles to be 12 BP53 and shall be driven to a bearing capacity as given in the general notes on the "General Plan & Elevation".
 - Guard rail end connection assembly shall be galvanized after welding.

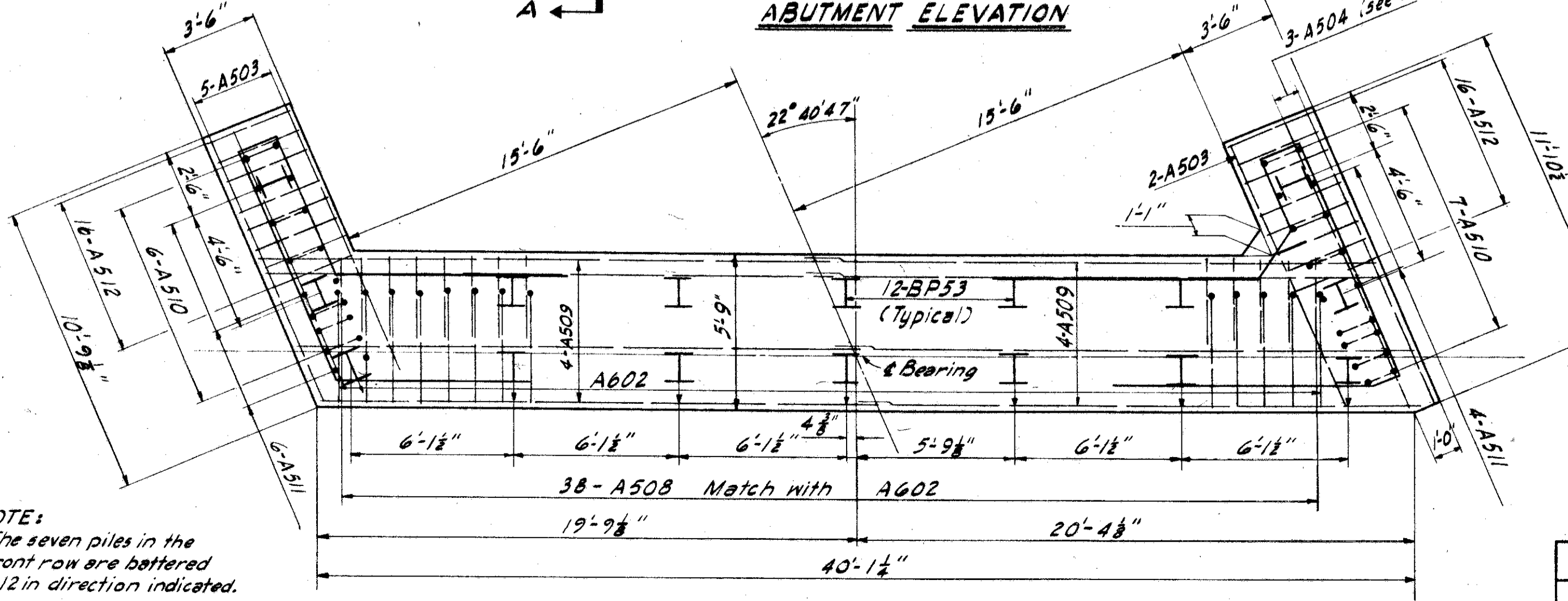
This sheet supersedes sheet 301. 3-21-60.

MICHAEL BAKER JR., CONSULTING ENGINEERS
ROCHESTER, PENNSYLVANIA

ABUTMENTS
BRIDGE NO. LAK. -1- 0608
UNDER KIRTLAND ROAD

LAKE COUNTY				STA. 328+57.43	
Designed	Drawn	Traced	Checked	Reviewed-Date	Revised
D.E.B.	A.C.M.	A.C.M.	G.S.W.	M.R.B. 4-58	3-18-60
					3-30-60

NOTE:
The seven piles in the front row are battered 3:12 in direction indicated.



FOOTING PLAN

TABLE OF ELEVATION

LOCATION	A	B	C	D	E	F	G	H	J
Abut. No. 1	719.65	722.09	722.07	715.14	715.36	715.58	715.57	715.56	709.14
Abut. No. 2	734.58	734.60	734.16	729.92	729.93	729.94	729.72	729.49	723.48