

MICROFILMED
DEC 23 1987

FED. RD. DIVISION	STATE	PROJECT	TYPE FUNDS
2	OHIO	I-1103 (20)	

300
337

LAKE COUNTY
LAK-I-402

GENERAL NOTES

- Reference shall be made to Standard Drawings CSB-2-56, sheets 213 of 6 revised 2-2-59 RB-1-55 dated 2-2-59, AR-1-57 revised 2-2-59.
- Design Specifications: This structure conforms to the requirements of "Design Specifications for Highway Structures" of the State of Ohio, Department of Highways, dated 9-1-57, revised 2-21-58.
- Loading: C.F. 400(57).

- Welding of structural steel shall be Class 'A' except as shown. Any welds shown as field welds may, at the option of the Contractor, be made in the shop.

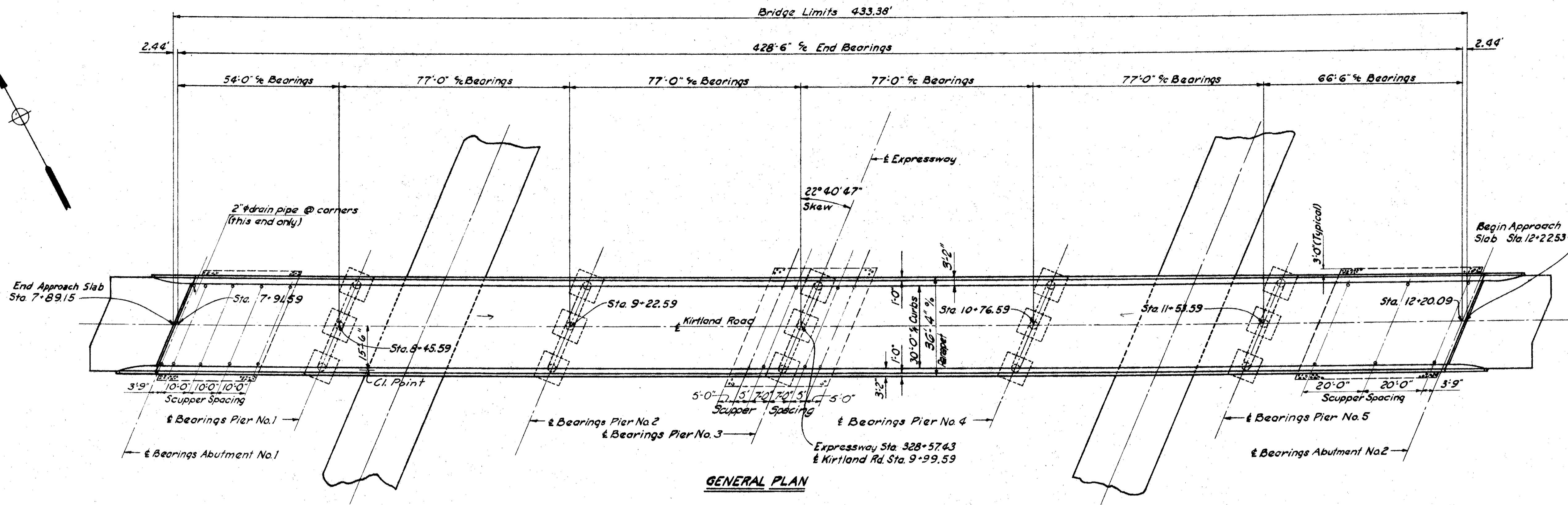
- Backfill behind the abutments shall be made with material meeting the requirements of Sec. I-22 and shall be compacted in accordance with requirements for embankment compaction. Payment for the backfill shall be included with unclassified excavation.

- Piles shall be driven with a hammer of not less than 11,000 ft. lbs. per blow to firm contact with shale. If the length of penetration is approximately equal to the depth to shale according to the bridge foundation investigation report, the firm contact shall be considered as attained when the capacity according to the formula in Section S-18.05 is not less than the following value for a pile hammer of the indicated energy ratings:

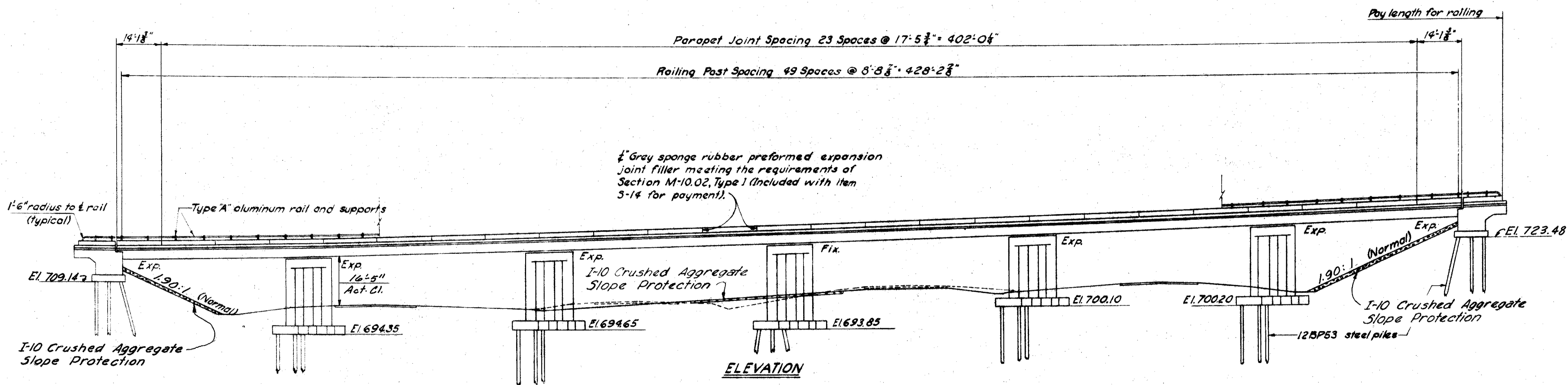
For the abutment piles:
57 tons per pile using an 11,000 ft. lb. hammer
52 tons per pile using a 15,000 ft. lb. or greater hammer

For the pier piles:
52 tons per pile using an 11,000 ft. lb. hammer
48 tons per pile using a 15,000 ft. lb. or greater hammer

If the energy rating of the hammer is between the ratings as shown above, the required formula capacity shall be determined by interpolation. The design load is 40 tons per pile for the abutment and pier piles.



GENERAL PLAN

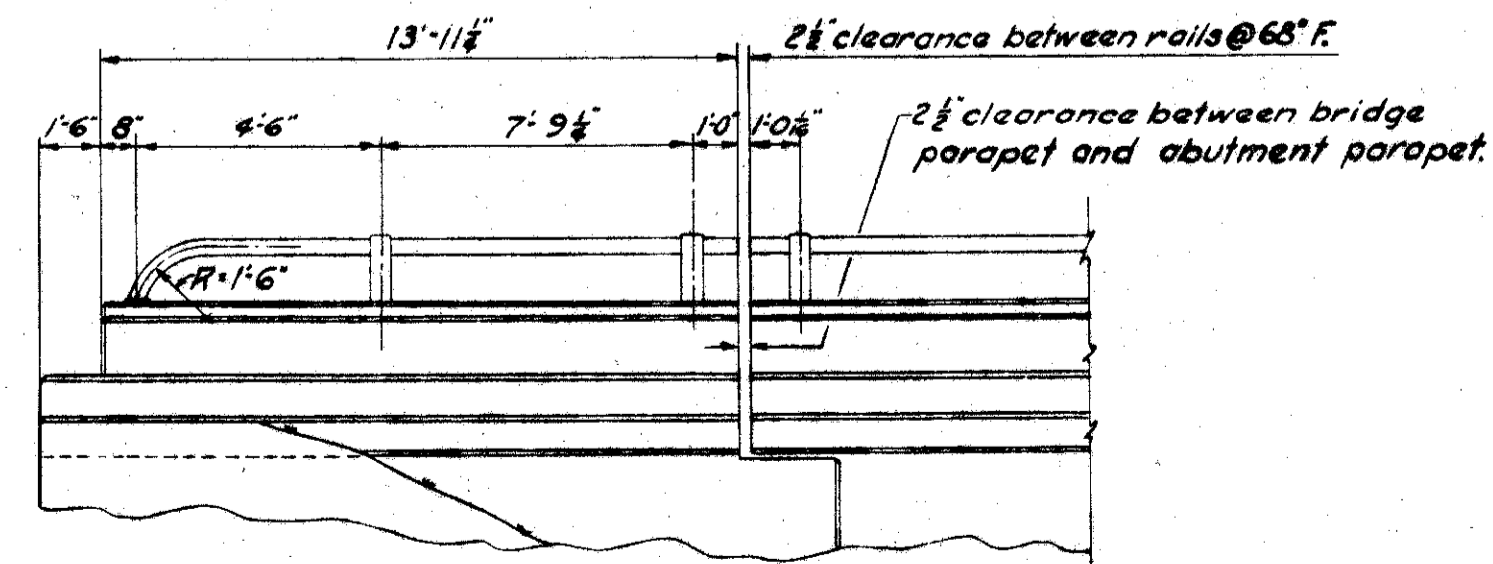


ELEVATION

+1.78% +3.37%

P.V.I. Sta.	6+95
El.	716.87
VC.	200'

GRADE DATA



TYPICAL ABUTMENT RAILING DETAIL

This sheet supersedes sheet 300. 3-21-60.

MICHAEL BAKER JR., CONSULTING ENGINEERS
ROCHESTER, PENNSYLVANIA

**GENERAL PLAN & ELEVATION
BRIDGE NO. LAK- I - 0608
UNDER KIRTLAND ROAD**

LAKE COUNTY				STA. 328 + 57.43	
Designed	Drawn	Traced	Checked	Reviewed-Date	Revised
G&W	r.b.m.	r.b.m.	EEW	W.R.B. 4-58	3-16-60