

9-A

V-5

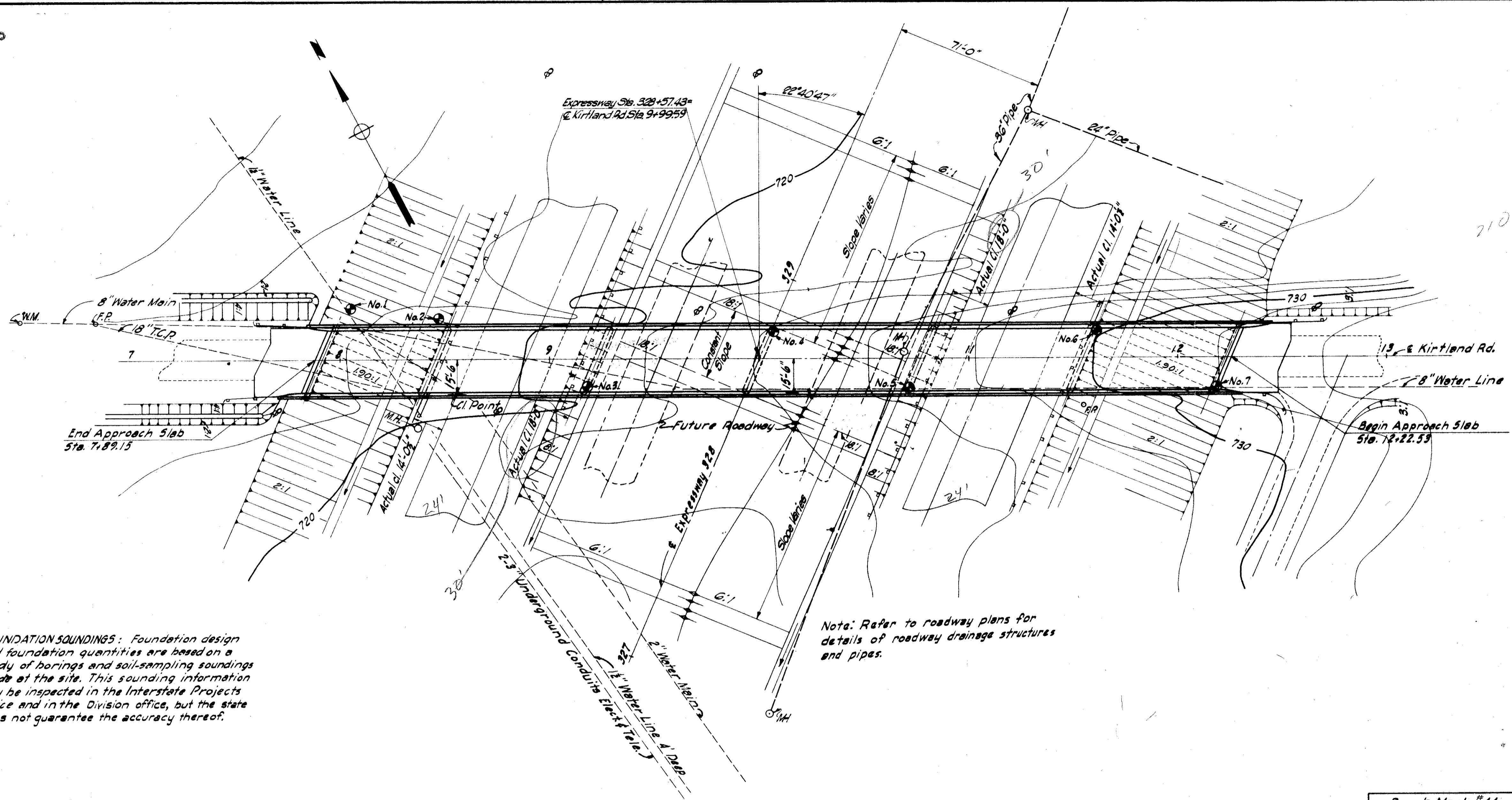
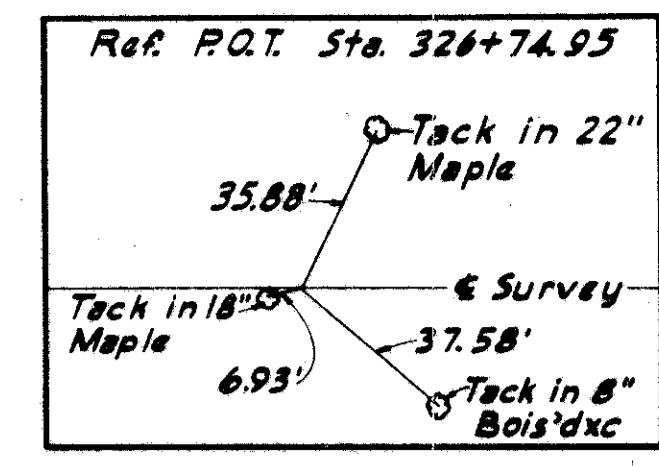
LAK-90-4.98-7.93±

MICROFILMED
DEC 23 1987

FED. RD. DIVISION	STATE	PROJECT	TYPE FUNDS
2	OHIO	I-1103 (20)	

299
333

8.63 MI. NORTH OF MAYFIELD HEIGHTS
LAKE COUNTY
LAK-1-4.02



FOUNDATION SOUNDINGS: Foundation design and foundation quantities are based on a study of borings and soil-sampling soundings made at the site. This sounding information may be inspected in the Interstate Projects office and in the Division office, but the state does not guarantee the accuracy thereof.

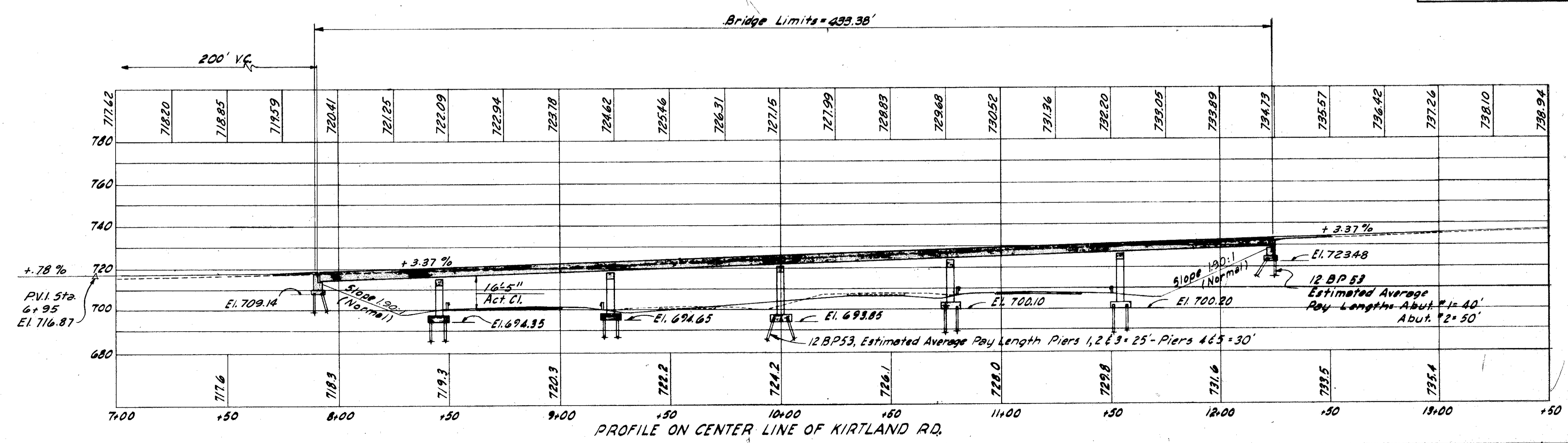
Note: Refer to roadway plans for details of roadway drainage structures and pipes.

Bench Mark #44
Lag bolt in root of 10" Elm
250' Lt of Sta. 328+50
60' East of Kirtland Rd.
Elevation 715.122

⊙ Denotes Boring Location

Kirtland Road ADT 4860 (1975)

This sheet supersedes sheet 299. 3-21-60.



PROPOSED STRUCTURE
 TYPE: Continuous steel beams with reinforced concrete deck and substructure.
 SPAN: 54'-77'-77'-77'-66.5' bearings.
 ROADWAY: 30'-0" 2'-0" safety curbs.
 LOAD FREQUENCY: C.F.=100 (37)
 WEARING SURFACE: 1" mono. concrete.
 APPROACH SLAB: Special Design (25' Long)
 SKEW: 22°40'47" L.F.
 ALIGNMENT: Tangent

MICHAEL BAKER, JR., CONSULTING ENGINEERS
ROCHESTER, PENNSYLVANIA

SITE PLAN
BRIDGE NO. LAK. -1-0608
UNDER KIRTLAND ROAD
LAKE COUNTY

SCALE 1"=30' STA. 328+57.43

PRESENT	TOPOGRAPHY	PROPOSED	WORK
Surveyed	Drawn B.C.W.	Designed G.S.W.	Drawn B.C.W. A.C.M.
		Checked E.E.W.	Revised H.R. 4-5