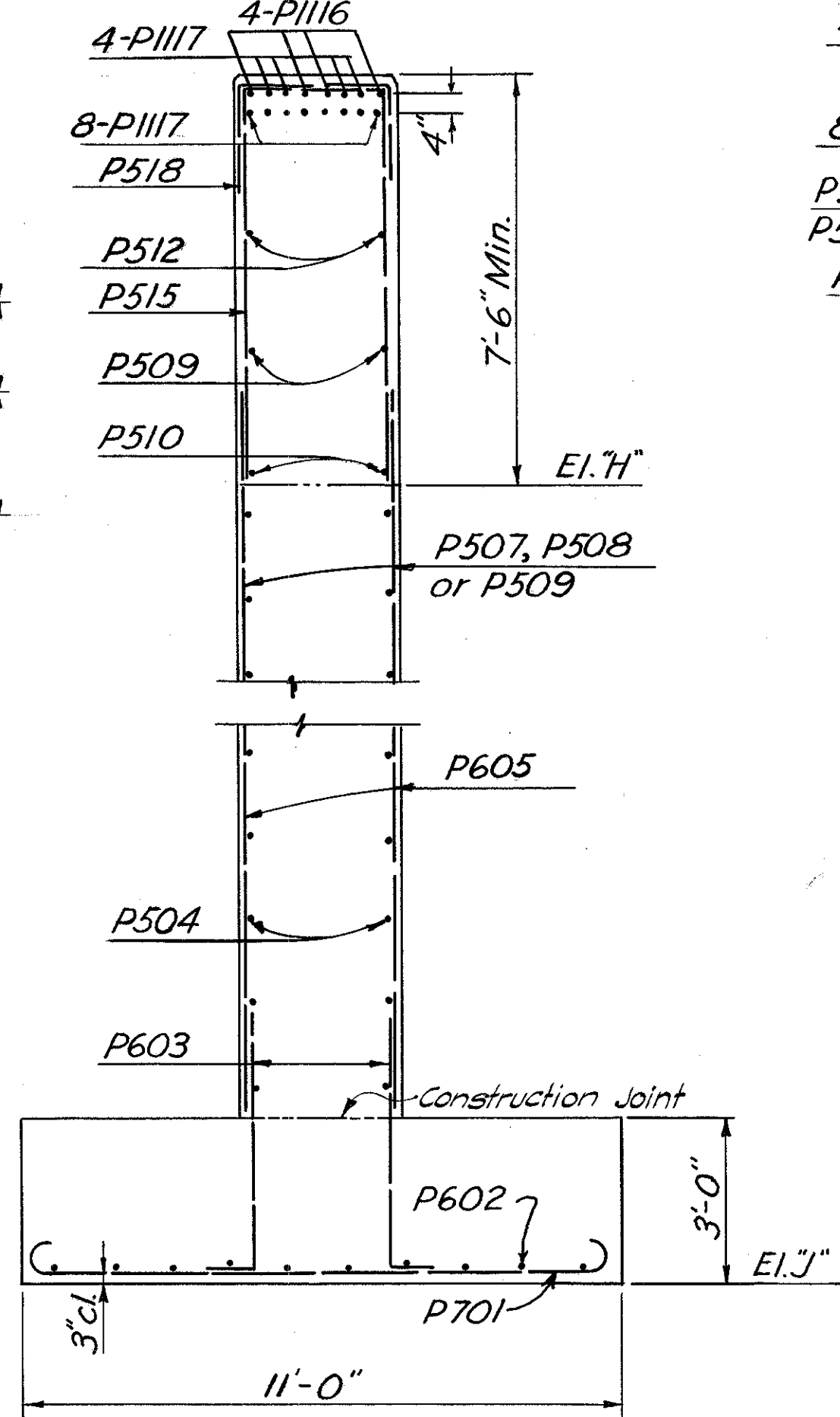
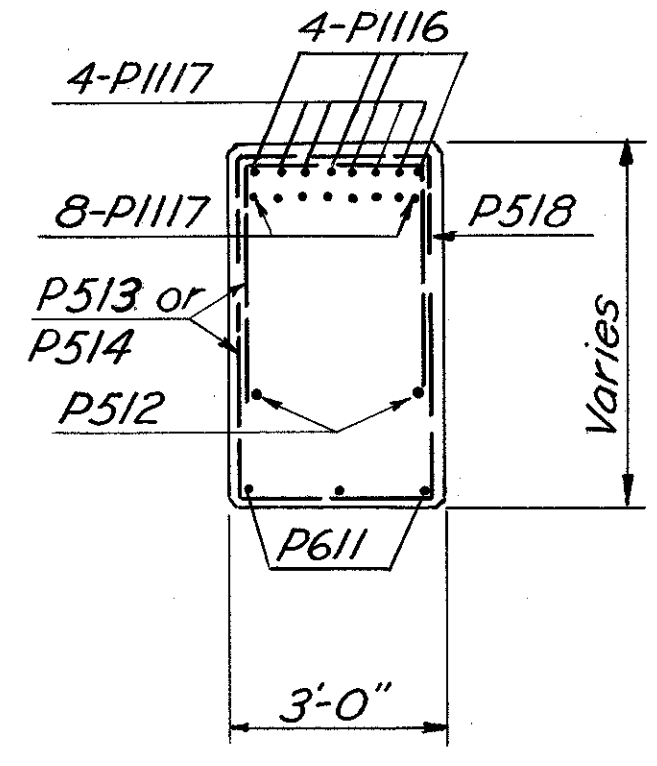


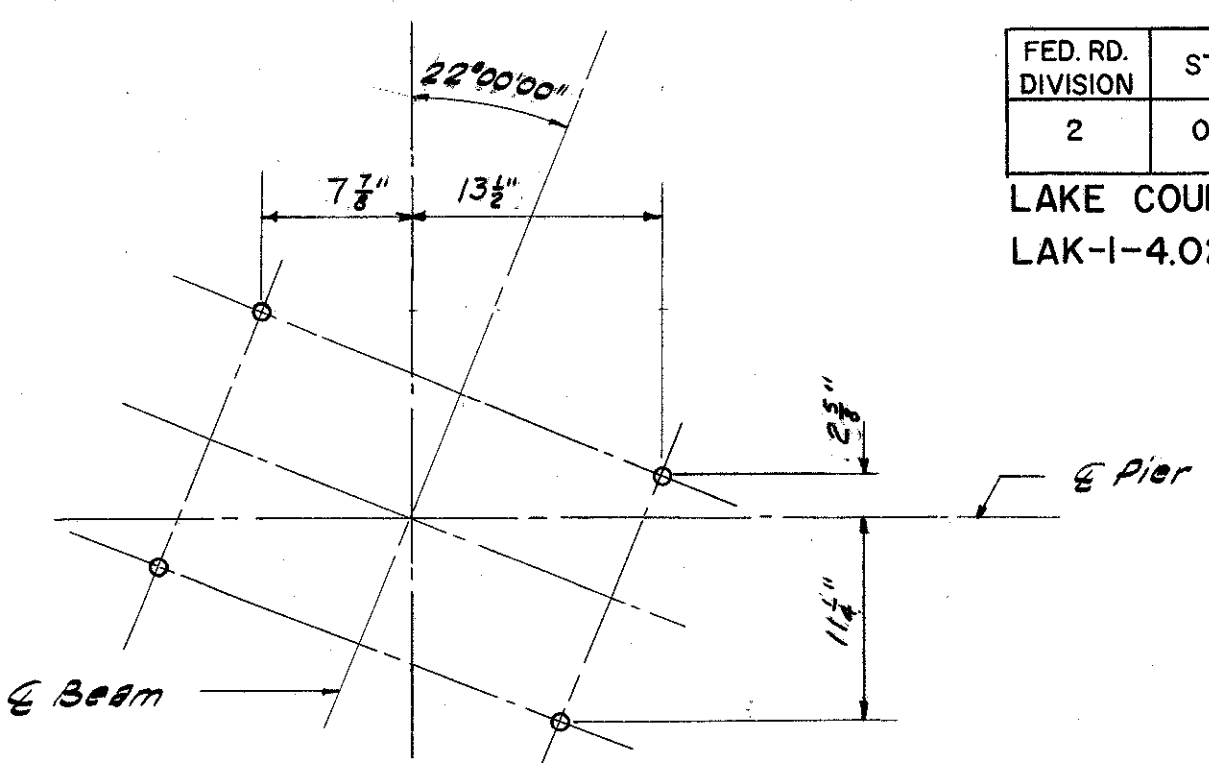
SECTION C-C



PART SECTION A-A

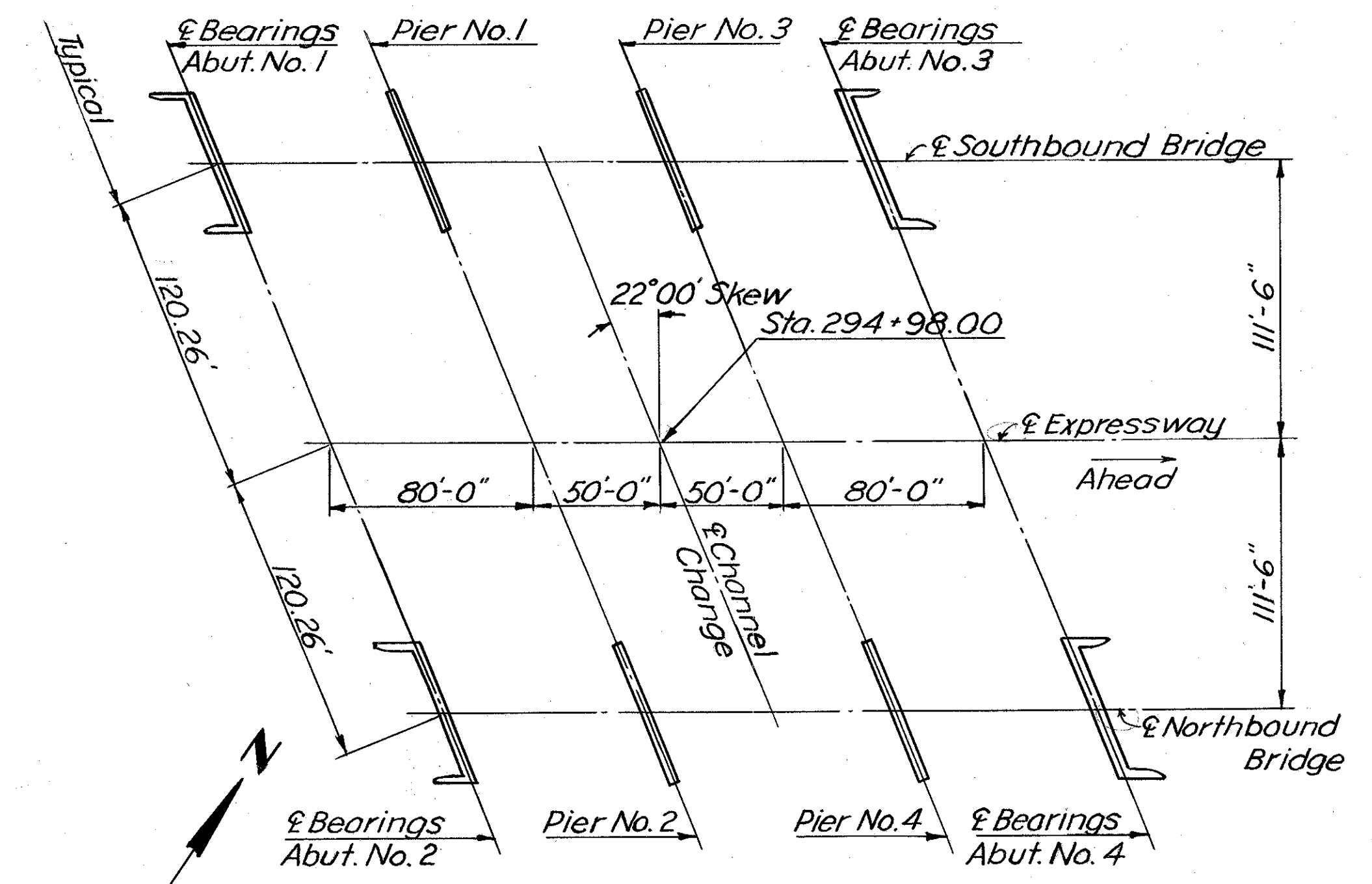


SECTION B-B



ANCHOR BOLT LAYOUT  
(For Piers No. 1 and No. 2 Only)

- NOTES:**
- Clearance of reinforcing steel from face of concrete shall be 2" unless otherwise shown.
  - Special care shall be taken in placing reinforcing steel in the bridge seat so that it will not interfere with the drilling of anchor bar holes at Piers 1 and 2.
  - Design foundation pressure is 4.5 tons per sq. ft.



SUBSTRUCTURES LAYOUT SKETCH

PIER	ELEVATIONS									
	A	B	C	D	E	F	G	H	J	
1	642.52	642.72	642.93	643.04	642.98	642.91	642.84	635.02	595.50	
2	644.23	644.43	644.64	644.84	644.87	644.81	644.74	636.73	595.50	
3	644.52	644.72	644.93	645.04	644.98	644.91	644.84	637.02	595.50	
4	646.23	646.43	646.64	646.84	646.87	646.81	646.74	638.73	595.50	

MICHAEL BAKER, JR., CONSULTING ENGINEERS  
ROCHESTER, PENNSYLVANIA

**PIERS**  
BRIDGE NO. LAK-I-054I  
OVER EAST BRANCH CHAGRIN RIVER

LAKE COUNTY STA. 294+98.00

Designed	Drawn	Traced	Checked	Reviewed-Date	Revised
D.W.S.	R.W.	F.E.H.	C.S.A.	KA 11-57	

No Changes