

MICROFILMED
DEC 17 1987

FED. RD. DIVISION	STATE	PROJECT	TYPE FUNDS
2	OHIO	I-1103(20)	

285
333

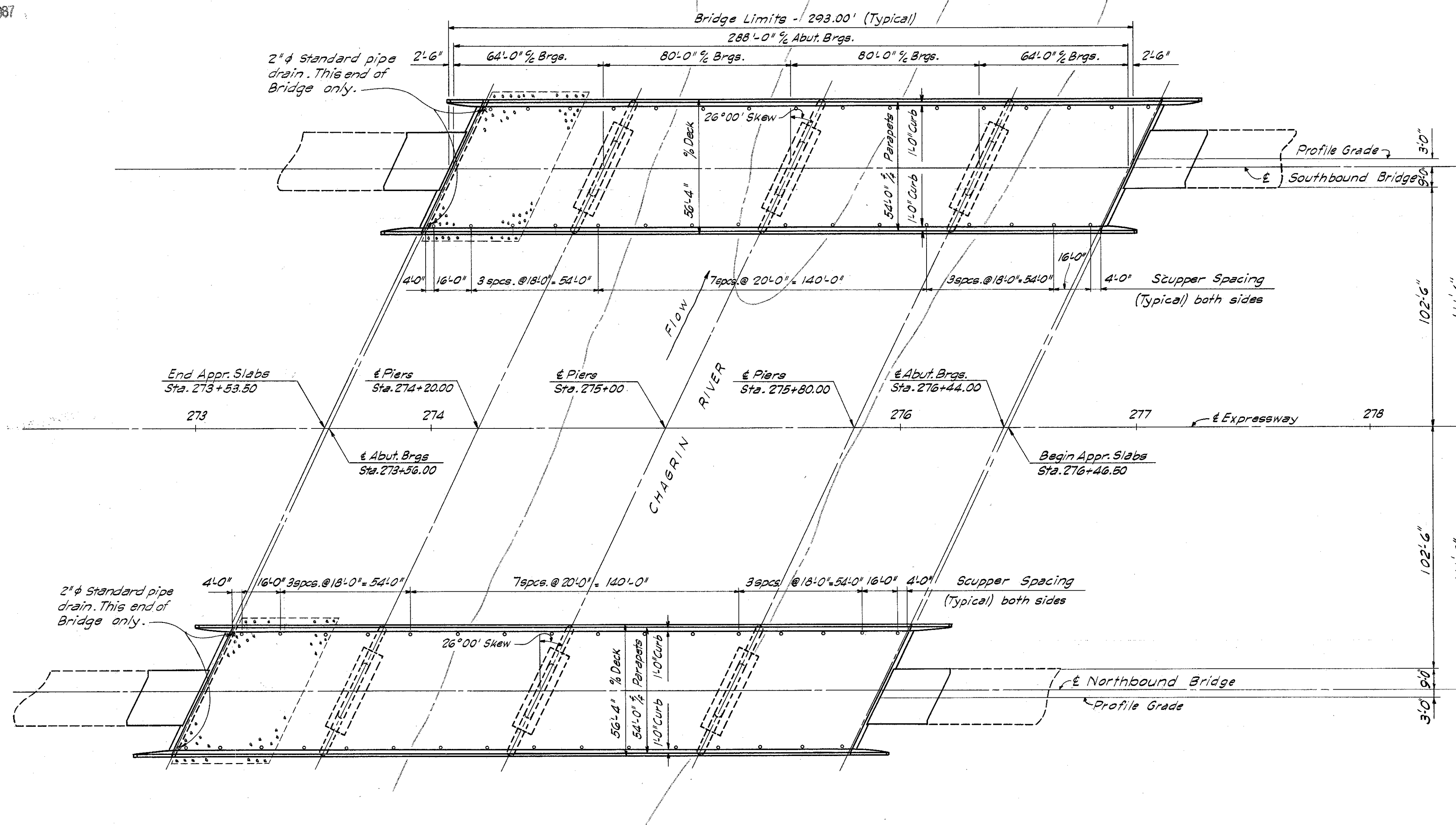
LAKE COUNTY
LAK-I-4.02

GENERAL NOTES

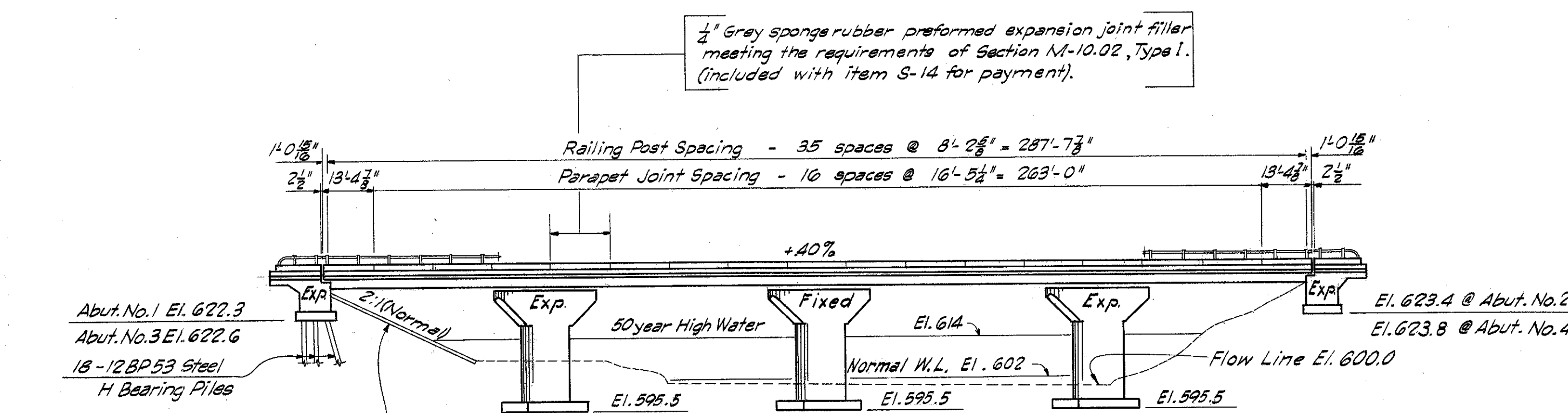
- Reference shall be made to Standard Drawings CSB-2-56, Sheets 2 & 3 of 6 revised 2-2-59, RB-1-55 dated 2-2-59, AR-1-57 revised 2-2-59 and to Supplemental Specification 1-127 revised 11-16-57.
- Design Specification: This structure conforms to the requirements of "Design Specifications for Highway Structures of The State of Ohio, Department of Highways, dated 9-1-57, revised 2-21-58.
- Loading: C.F. 2000(57). (Adequate for A.A.S.H.O alternate loading).
- Welding of structural steel shall be Class "A", except as shown. Any welds shown as field welds may, at the option of the Contractor, be made in the shop.

- Excavation Quantities includes the removal of fill material between surfaces of proposed embankment and bottom of abutment.
- Backfill behind abutments shall be made with material meeting the requirements of Sec. I-22 and shall be compacted in accordance with requirements for embankment compaction. Payment for backfill shall be included with Unclassified Excavation.

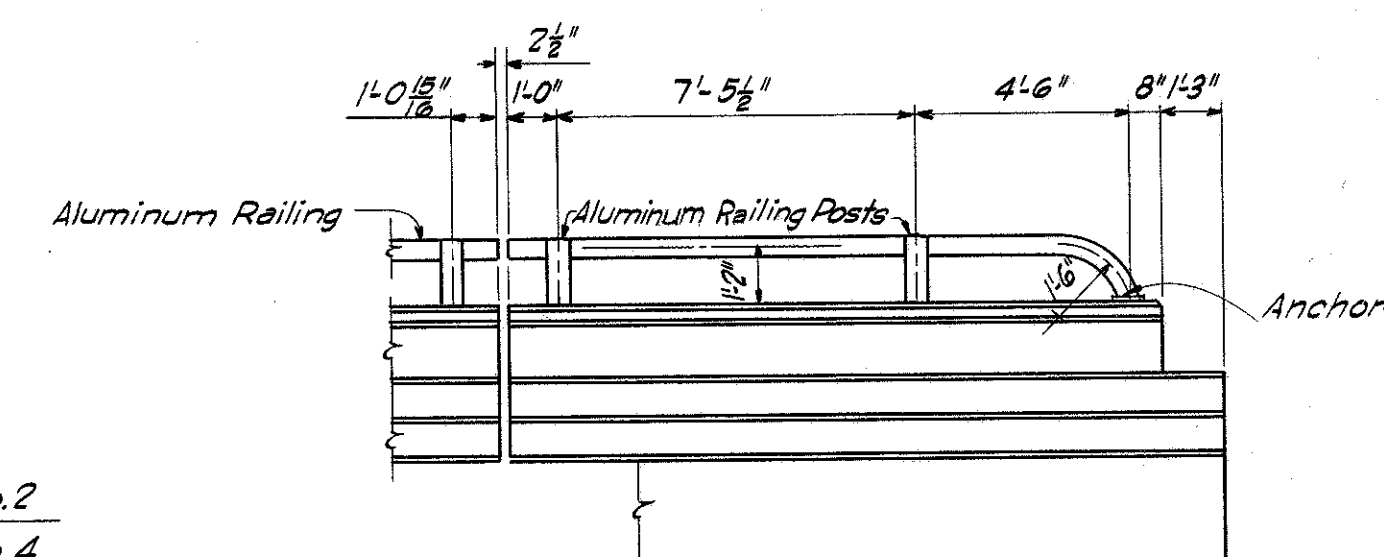
- Foundation Bearing Pressure: Pier footings are designed for a maximum bearing pressure of 4 tons per sq. ft. Pier footings shall extend a minimum of 2.5' into shale or to the elevation shown, whichever is lower.
- Piles for the abutments shall be 12BP53 and shall be point bearing. See abutment sheet for detailed notes. Estimated average pay length is 25 ft. per pile.



GENERAL PLAN



TYPICAL BRIDGE ELEVATION



TYPICAL RAILING POST & PARAPET JOINT DETAIL

MICHAEL BAKER JR., CONSULTING ENGINEERS
ROCHESTER, PENNSYLVANIA

GENERAL PLAN & ELEVATION

**BRIDGE NO. LAK-I-0505
OVER CHAGRIN RIVER**

LAKE COUNTY					STA. 273 + 53.50	TO 276 + 46.50
Designed	Drawn	Traced	Checked	Reviewed-Date	Revised	
C.F.J.	A.D.	A.D.	J.V.W.	W.R.B. 4-25-58		