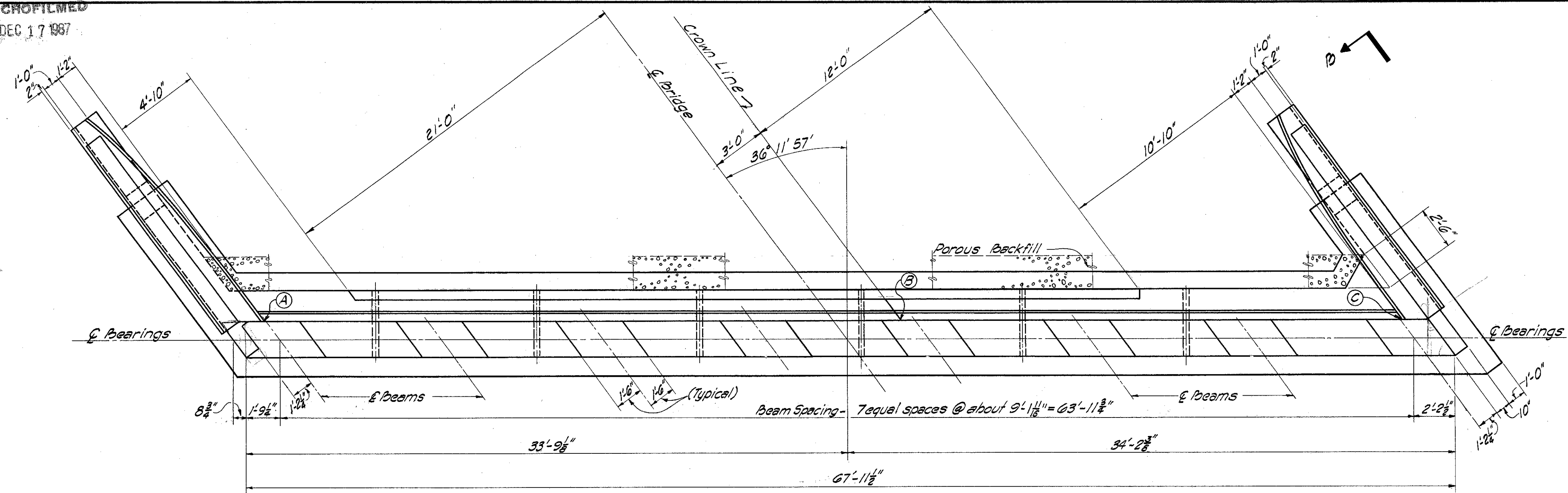


DEC 17 1987

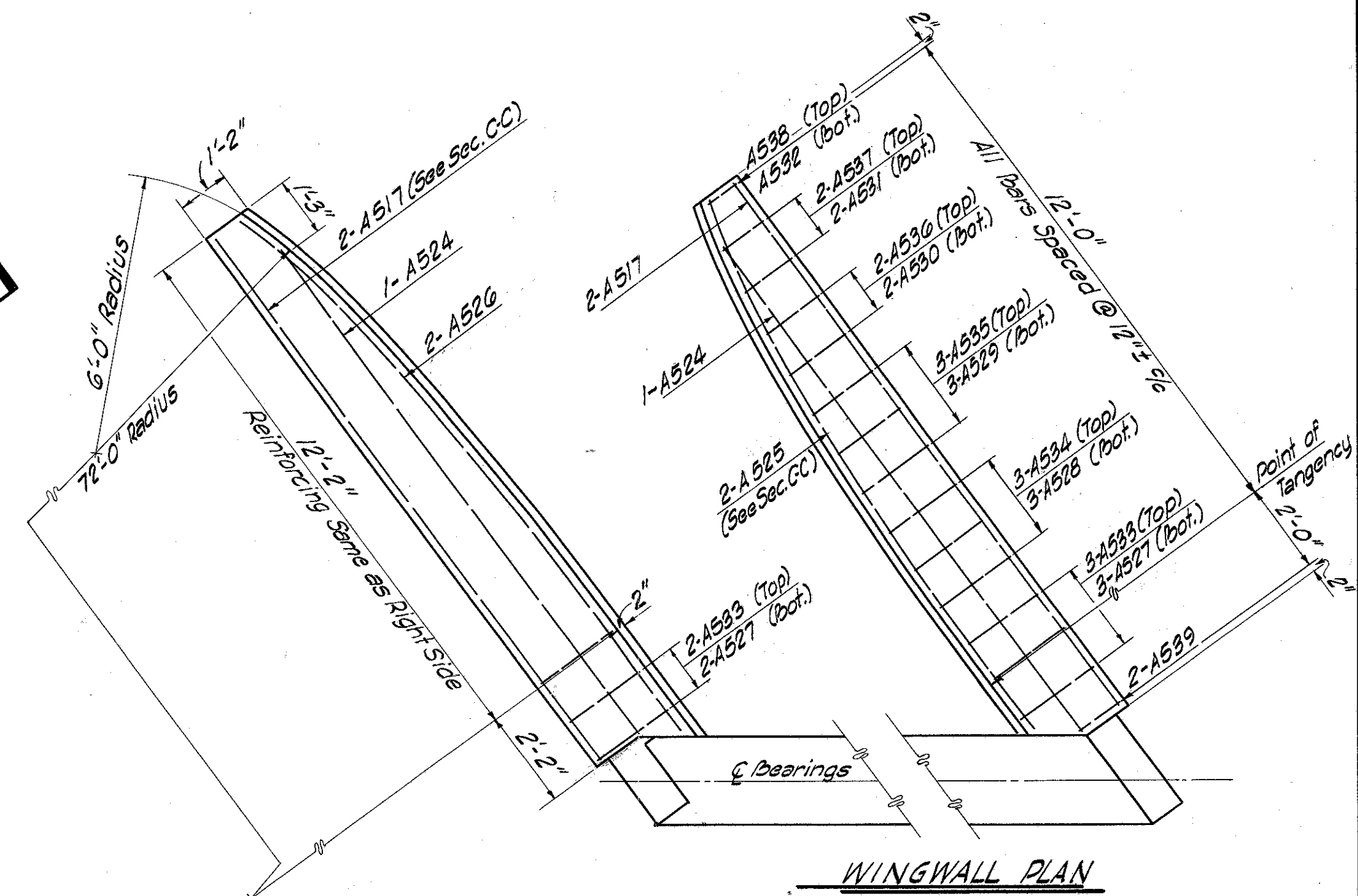
FED. RD. DIVISION	STATE	PROJECT	TYPE FUNDS
2	OHIO	I-1103(20)	

276
333

LAKE COUNTY
LAK-I-4.02

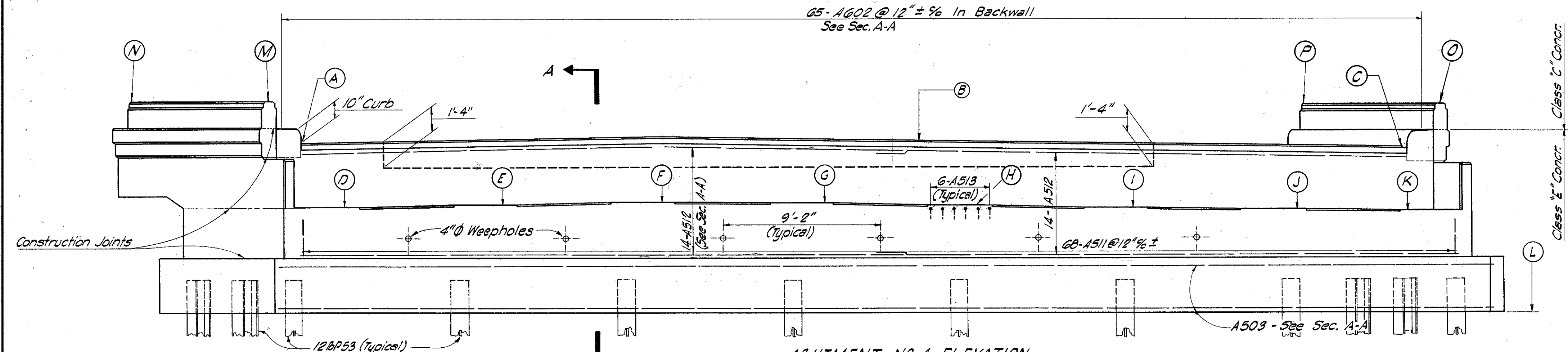


ABUTMENT NO. 4 PLAN
(Abutment No. 3 Similar; See Elevation Location Diagram)

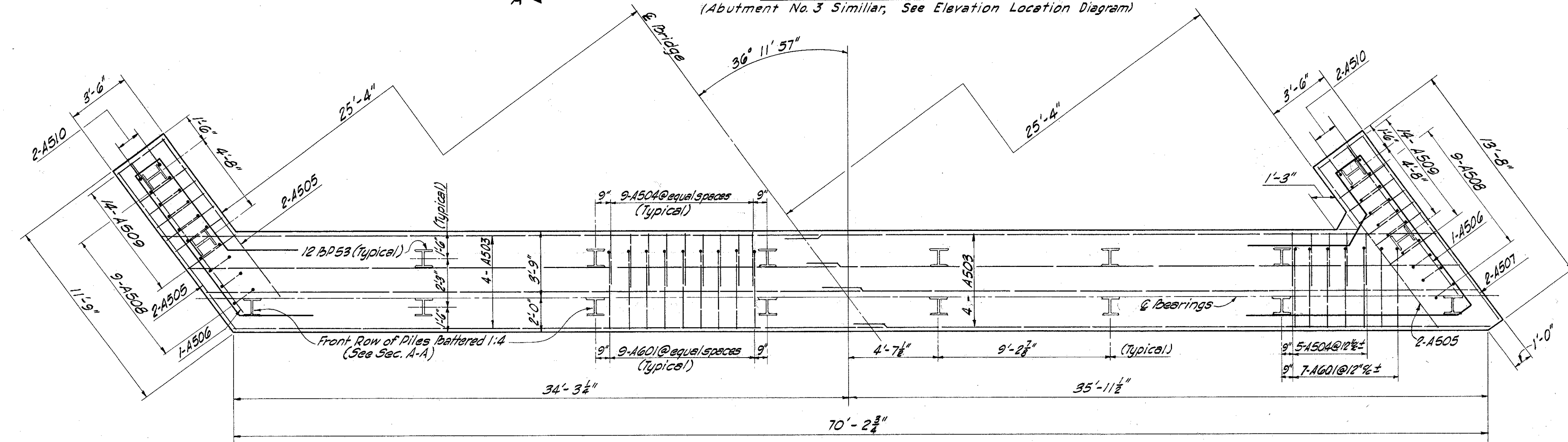


WINGWALL PLAN

NOTE
• See Abutments South Bound - Plan & Elevation sheet for General Notes and Piling Notes.



ABUTMENT NO. 4 ELEVATION
(Abutment No. 3 Similar; See Elevation Location Diagram)



ABUTMENTS NO. 3 & NO. 4 FOOTING PLAN

This sheet to work with Abutments - Sections & Details sheet.

MICHAEL BAKER JR., CONSULTING ENGINEERS ROCHESTER, PENNSYLVANIA					
ABUTMENTS					
NORTH BOUND-PLAN & ELEVATION					
BRIDGE NO. LAK-I-0499					
OVER RIVERSIDE DRIVE					
LAKE COUNTY					N.B. STA. 269 + 83.49
					TO STA. 271 + 32.07
Designed	Drawn	Traced	Checked	Reviewed-Date	Revised
Y.G.	J.E.	J.E.	J.K.W.	W.R.D. 4-25-58	