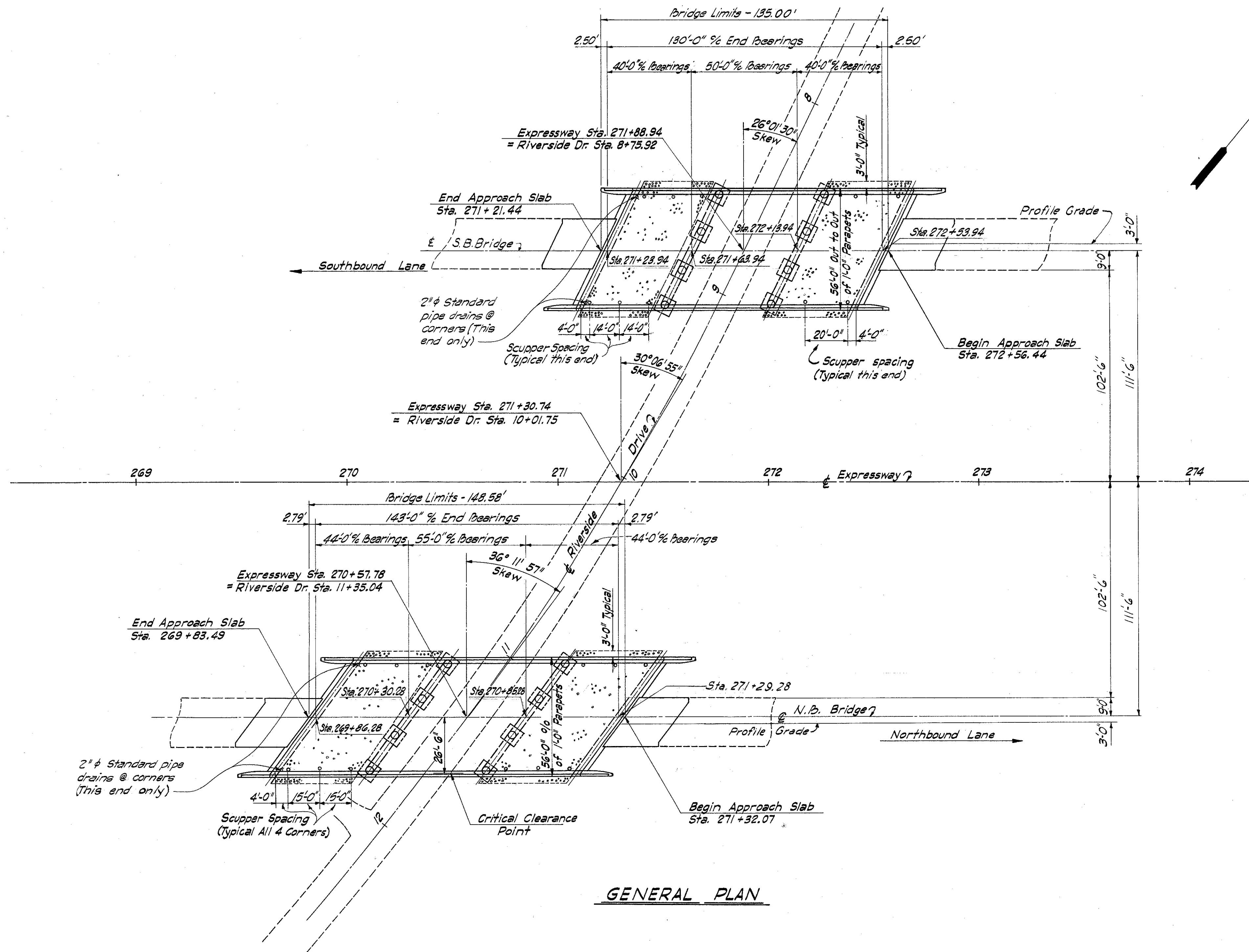
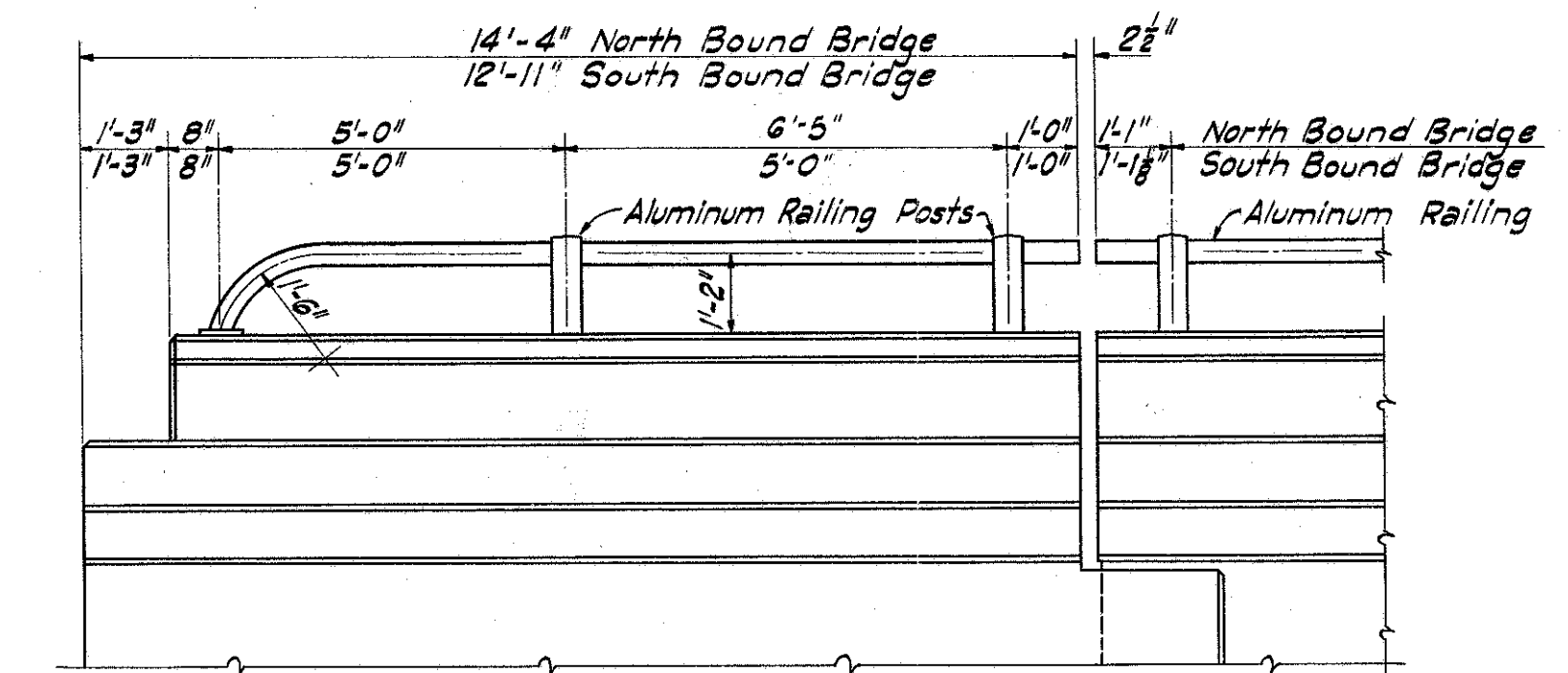


**GENERAL NOTES**

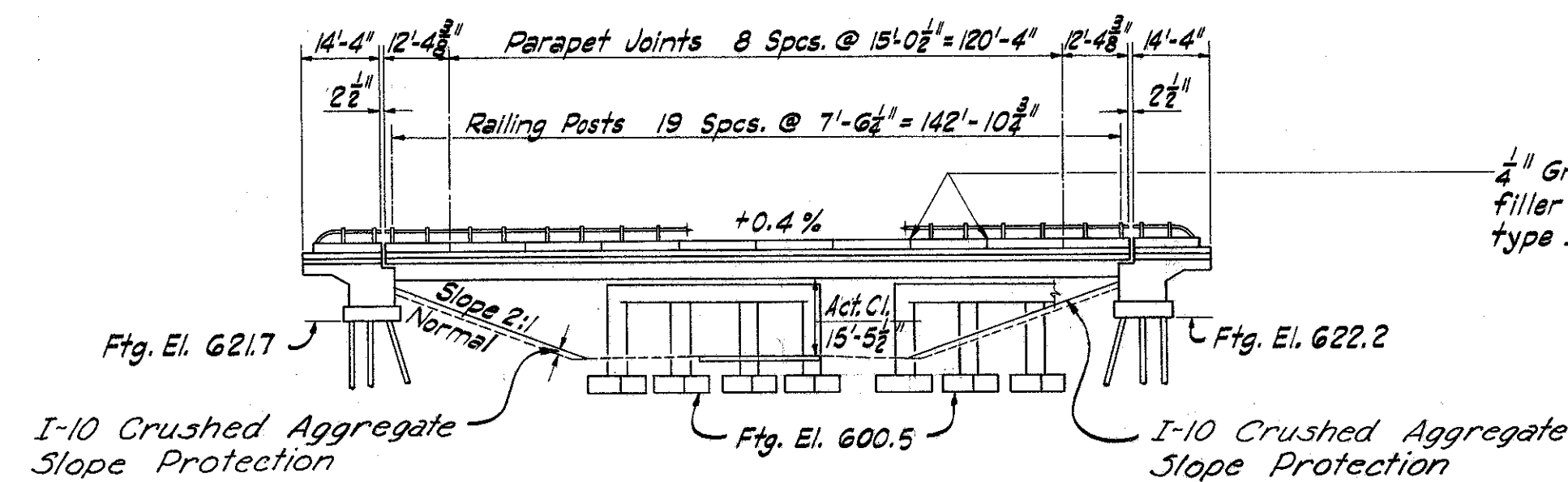
- Reference shall be made to Standard Drawing GSB-2-56, sheets 2 of 6 and 3 of 6 revised 2-2-53, AR-1-57 revised 2-2-59, and to Supplemental Specification 1-127 revised 11-16-57.
- Design Specifications: This structure conforms to the requirements of "Design Specifications for Highway Structures" of the State of Ohio, Department of Highways, dated 9-1-57, revised 2-21-58.
- Loading: CF = 2000 (57). Adequate for A.A.S.H.O alternate loading.
- Excavation Quantities includes the removal of fill material between surface of proposed embankment and bottom of abutment.
- Welding of structural steel shall be Class "A", except as shown. Any welds shown as field welds may, at the option of the contractor, be made in the shop.
- Maintenance and Protection of Traffic: A minimum roadway width of 26'-0" shall be maintained on Riverside Drive at all times. The Contractor shall safeguard the travelling public by providing platforms, nets or other suitable protection above the traveled lanes. A minimum vertical clearance of 12'-9" shall be provided at all times.
- Embankments shall be placed to subgrade elevation for a distance of approximately 200 ft beyond the bridge limits as early as practicable in the construction procedure and before work is begun on abutments or Piers 1 and 2. Abutments should be placed as late as practicable, with a minimum lapse of 30 days between completion of the embankment and starting of work on abutments.
- Pier Footings: Pier footings are designed for a maximum bearing pressure of 4 tons per sq. ft. Pier footing shall extend a minimum of 3" into shale, or to the elevation shown, whichever is lower.
- Piles for the abutments shall be 12BP53 and shall be point bearing. See abutment sheet for detailed notes. Estimated average pile length is 25 ft per pile.
- Backfill behind abutments shall be made with material meeting the requirements of Sec. 1-22 and shall be compacted in accordance with requirements for embankment compaction. Payment for backfill shall be included with Unclassified excavation.



**GENERAL PLAN**

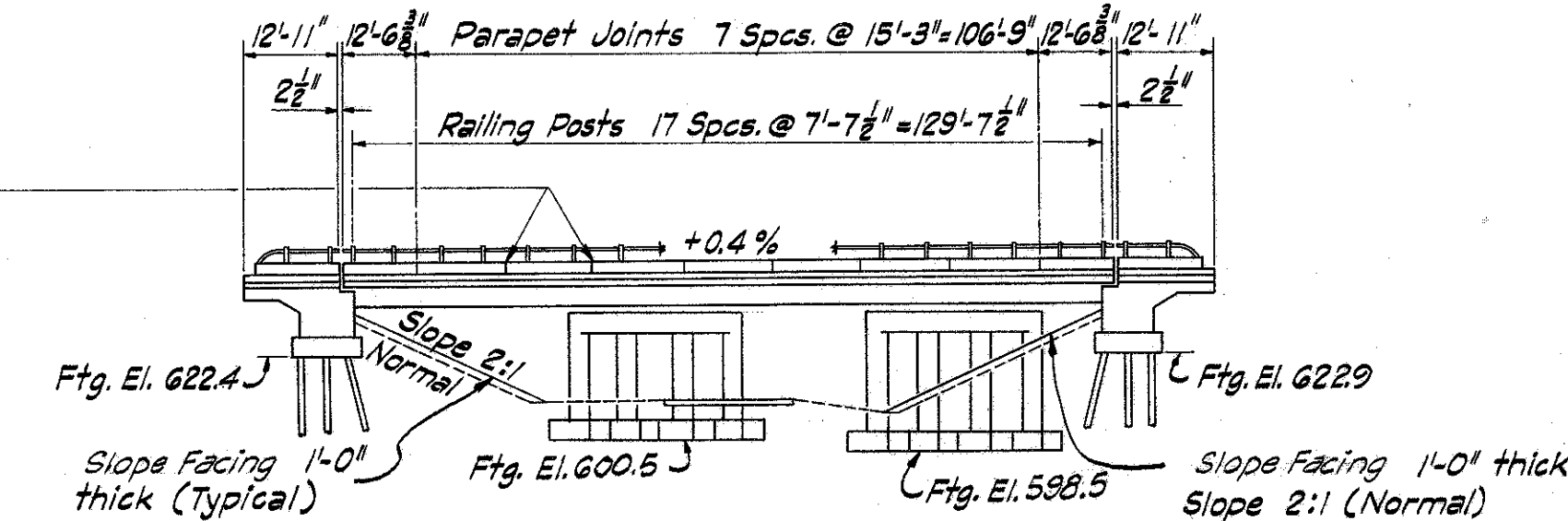


**ABUTMENT RAILING DETAIL**  
(Typical)



**ELEVATION NORTH BOUND BRIDGE**

1/4" Gray sponge rubber preformed expansion joint filler meeting the requirements of section M-10.02, type 1. (Included with item S-14 for payment).



**ELEVATION SOUTH BOUND BRIDGE**

MICHAEL BAKER JR., CONSULTING ENGINEERS ROCHESTER, PENNSYLVANIA					
<b>GENERAL PLAN &amp; ELEVATION</b>					
BRIDGE NO. LAK-1-0499 OVER RIVERSIDE DRIVE					
			N.B. STA. 269 + 83.49		
			TO STA. 271 + 32.07		
			S.B. STA. 271 + 21.44		
			TO STA. 272 + 56.44		
LAKE COUNTY					
Designed	Drawn	Traced	Checked	Reviewed-Date	Revised
Y.B. R.W.J.	W.A.U.	W.A.U.	J.L.W.	W.B.B. 4-25-58	