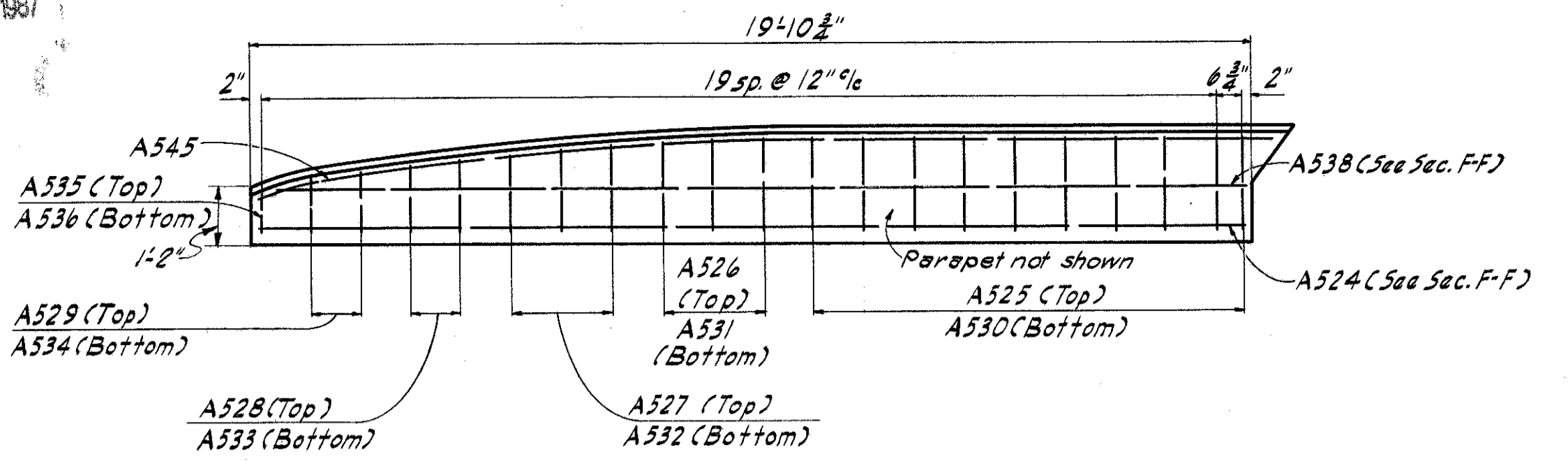


MICROFILMED
DEC 17 1987

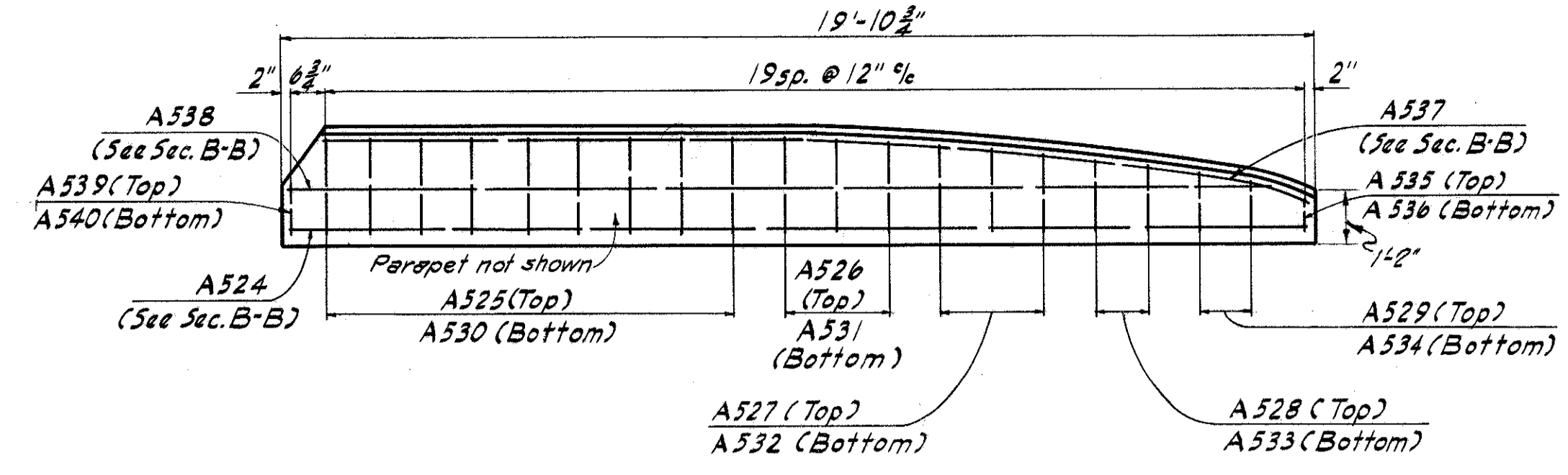
FED. RD. DIVISION	STATE	PROJECT	TYPE FUNDS
2	OHIO	I-1103 (20)	

LAKE COUNTY
LAK-I-4.02

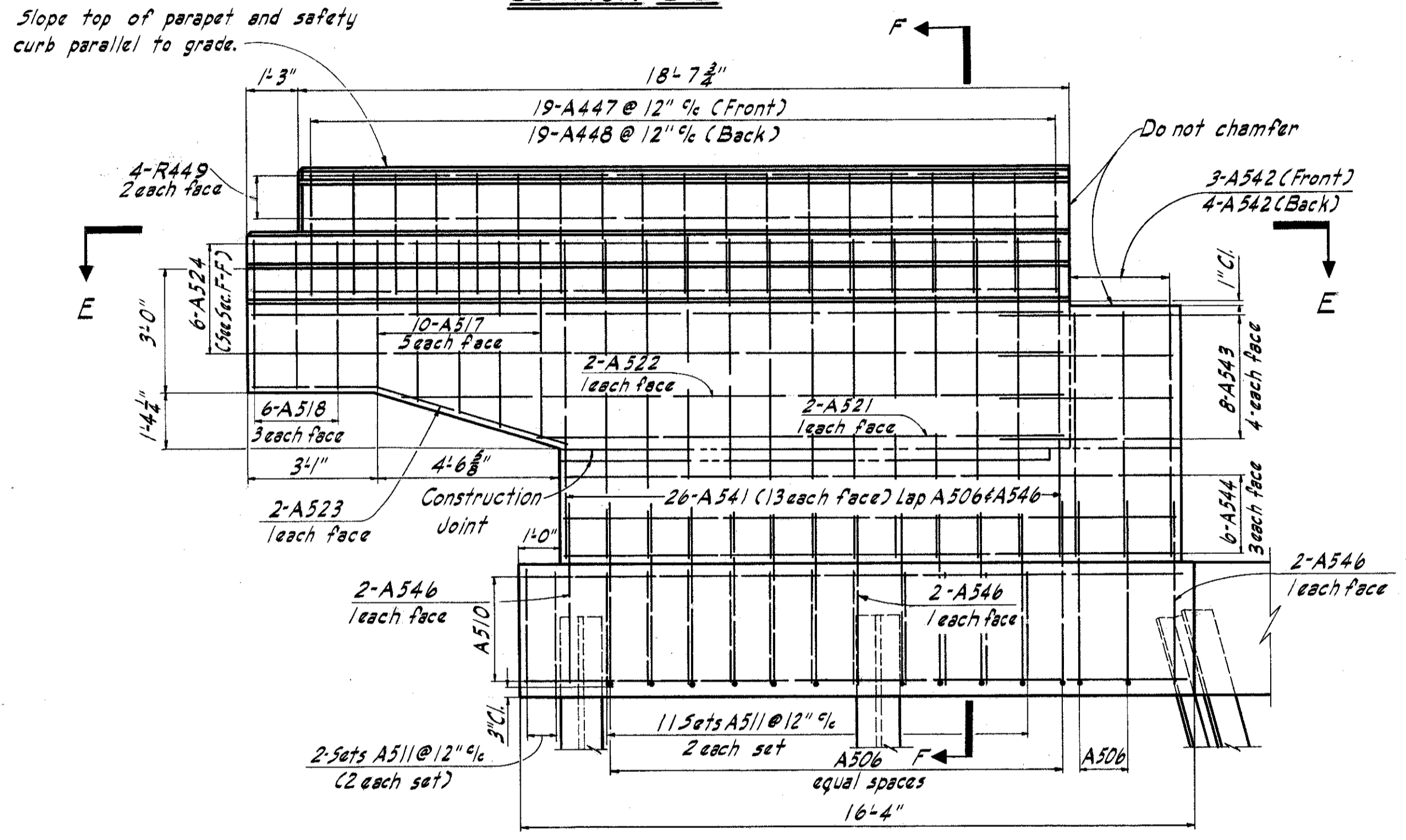
204
333



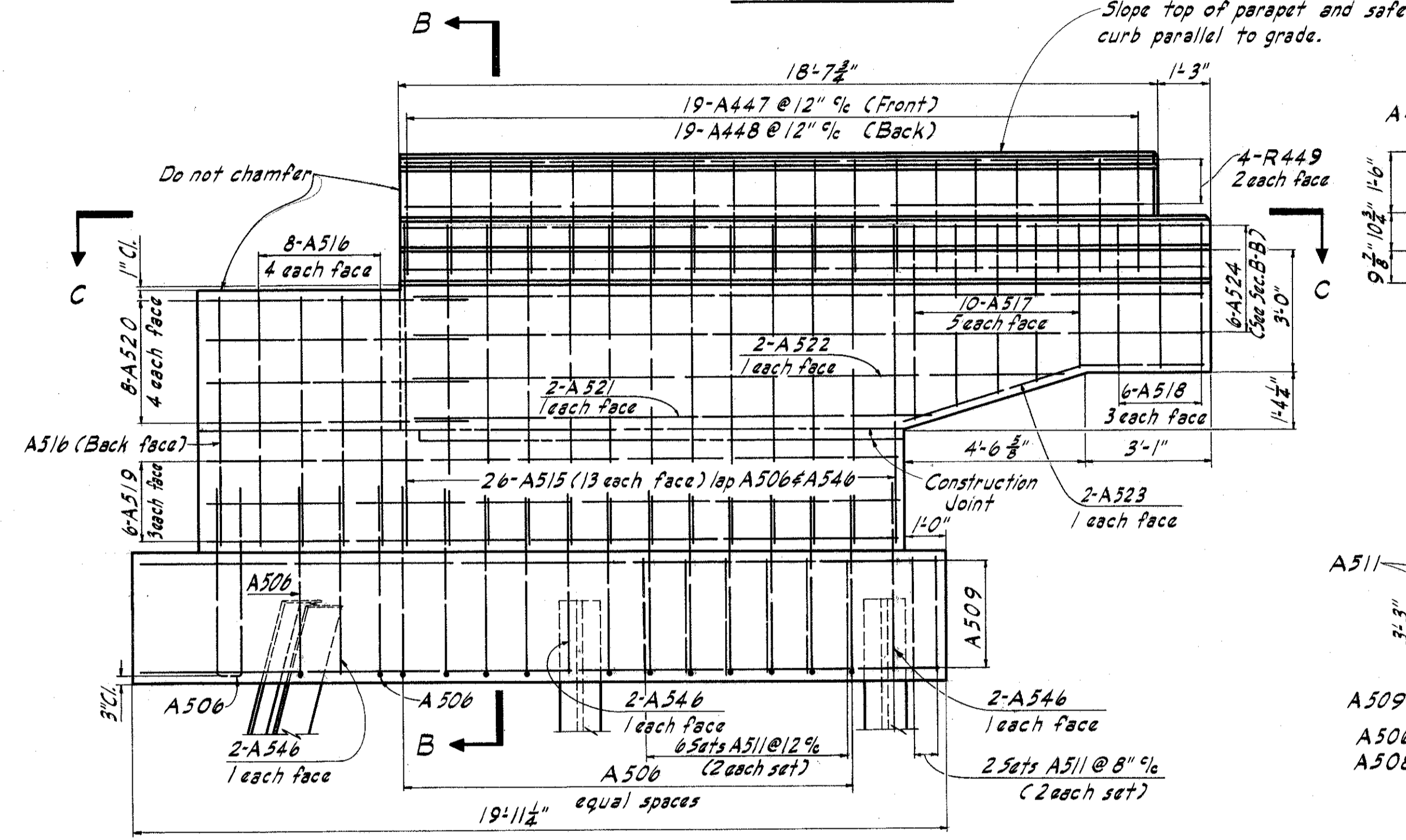
SECTION E-E



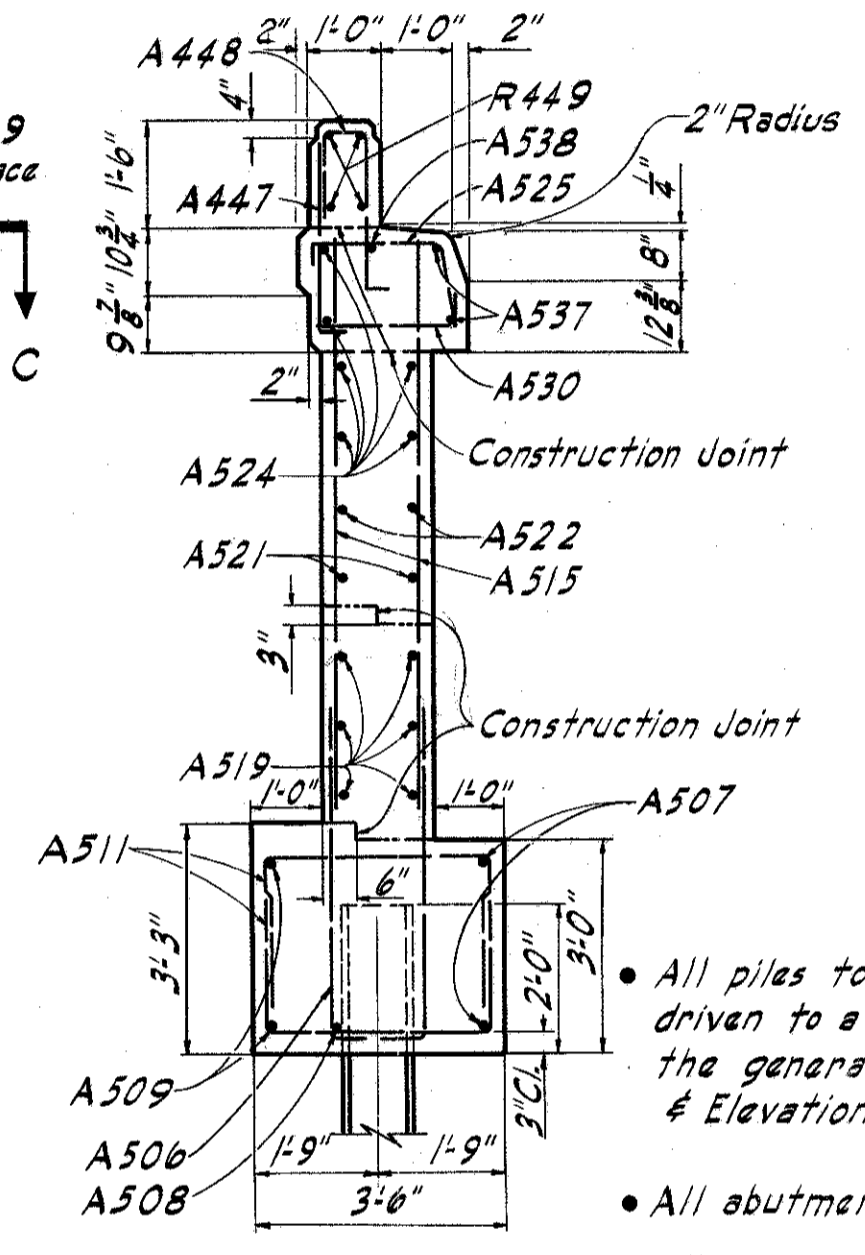
SECTION C-C



WINGWALL ELEVATION D-D



WINGWALL ELEVATION A-A

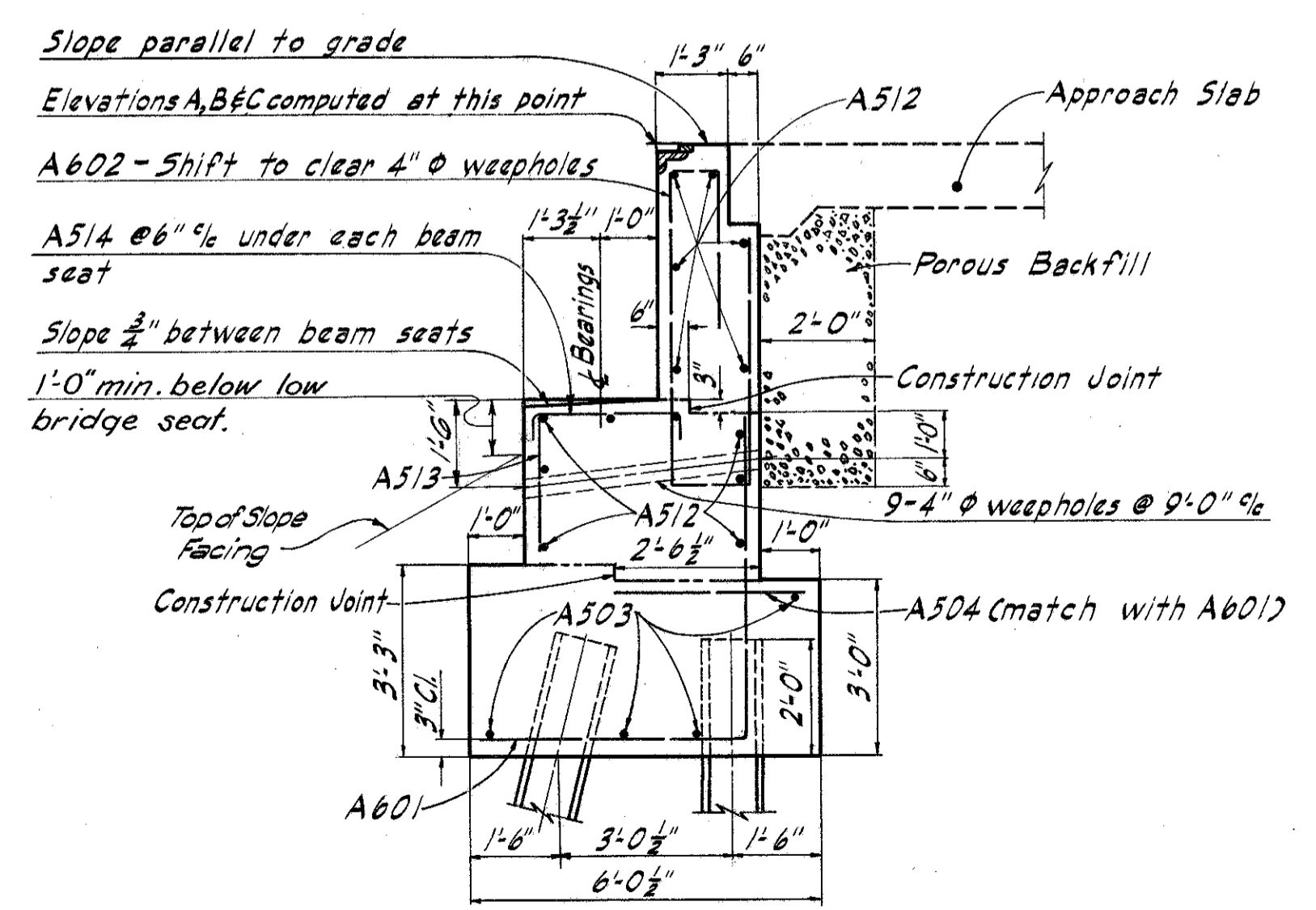


SECTION B-B
(Section F-F Similar)

NOTES

- All piles to be 12BP53 and shall be driven to a bearing capacity as given in the general notes on the "General Plan & Elevation."
- All abutment concrete shall be Class "E"
- All parapet concrete shall be Class "C"
- Porous backfill 2 feet thick full length of abutment shall extend up to the underside of the approach slab.
- Guard rail and connection to be included in cost of bridge railing.
- Clearance of reinforcing steel from face of concrete shall be 2" unless otherwise shown.
- Concrete above bridge seat construction joint shall not be placed until after the steelwork is erected, but before placing the deck slab.
- Steel end dam shall be used as a template for the top of the backwall.

NOTE: Guard Rail Detail for this Bridge similar to that for the North Bridge, South Bound.



SECTION G-G

MICHAEL BAKER JR., CONSULTING ENGINEERS ROCHESTER, PENNSYLVANIA					
ABUTMENTS					
NORTH BOUND-SECTIONS & DETAILS BRIDGE NO. LAK-I-0426 OVER STATE ROUTE NO. 174					
LAKE COUNTY					
					NB. STA. 232+41.54 TO STA. 234+57.10
Designed	Drawn	Traced	Checked	Reviewed-Date	Revised
P.C.H.	B.C.W.	E.F.T.	G.M.W.	W.R.B. 4-58	