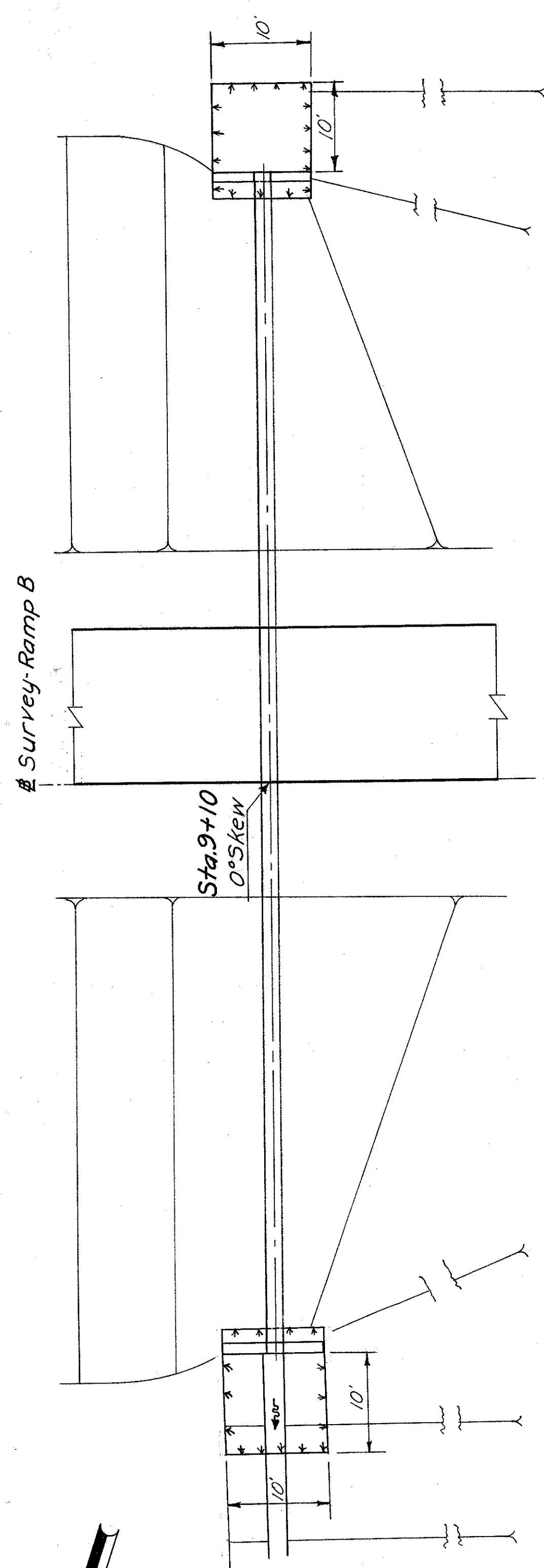
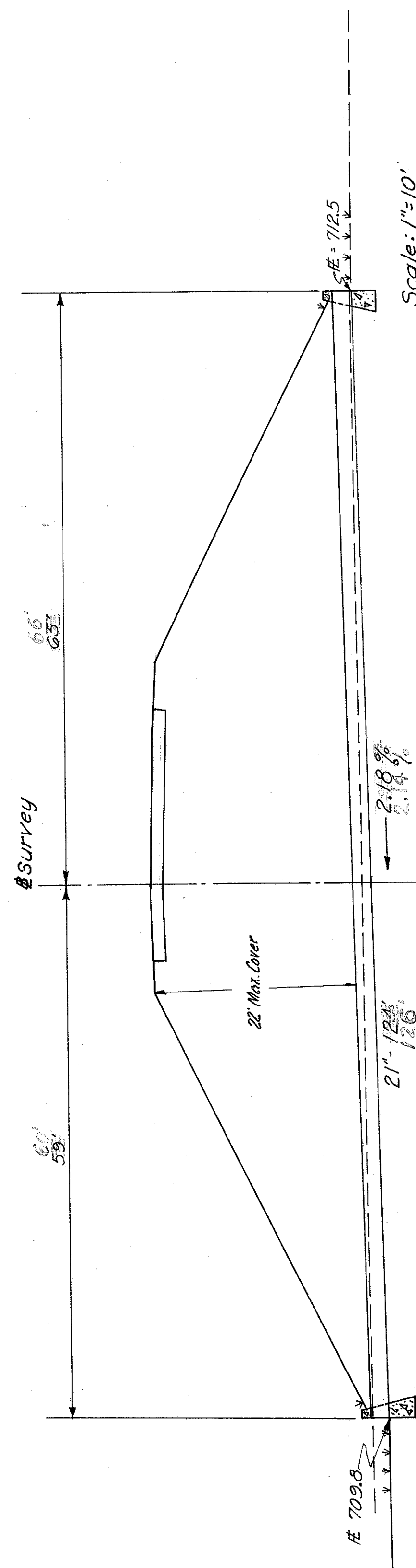


LAKE COUNTY  
LAK 1-4.02



Headwater = 2.1'...  
Velocity = 9.5 F.P.S.

Drainage Area = 2.8 Ac.  
Q25 = 11.5 C.F.S.

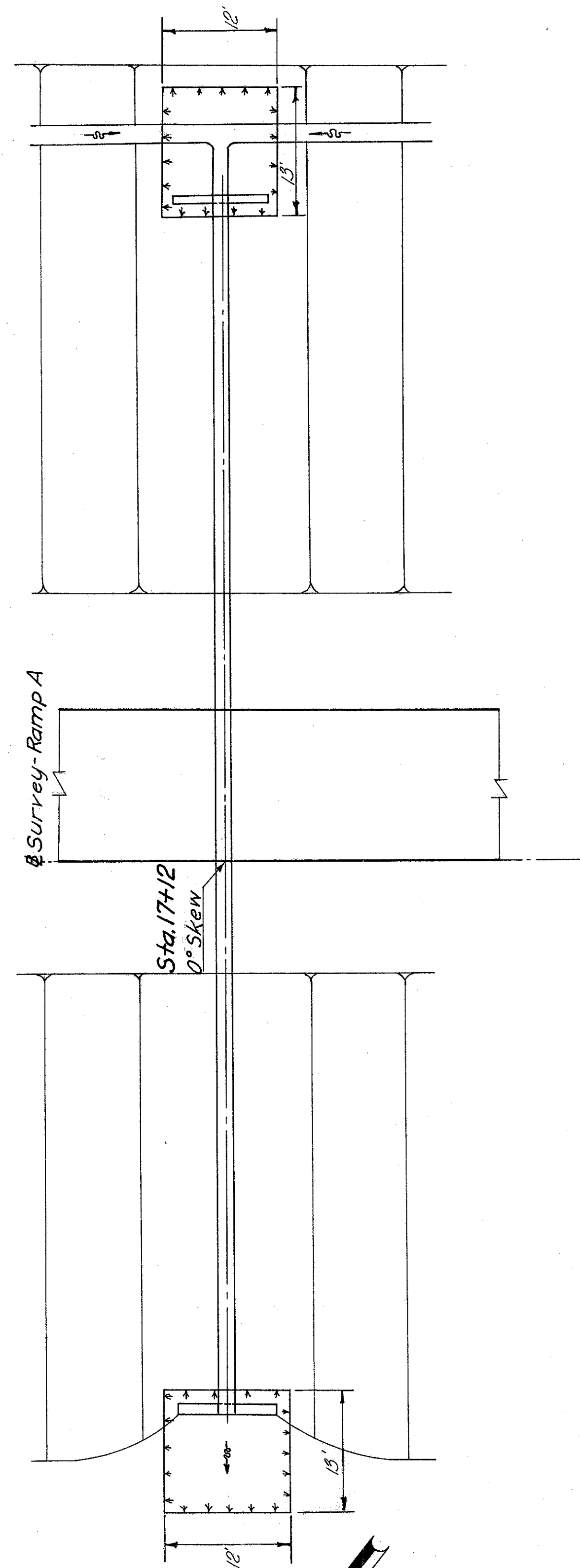


Scale: 1"=10'  
Sta. 9+10 Ramp "B"  
S.R. 306 Interchange

**CULVERT DATA**  
TYPE: Pipe Culvert S-27 M.G.G(d)  
Type "A" Hdw'l's  
SIZE: 21"x128"

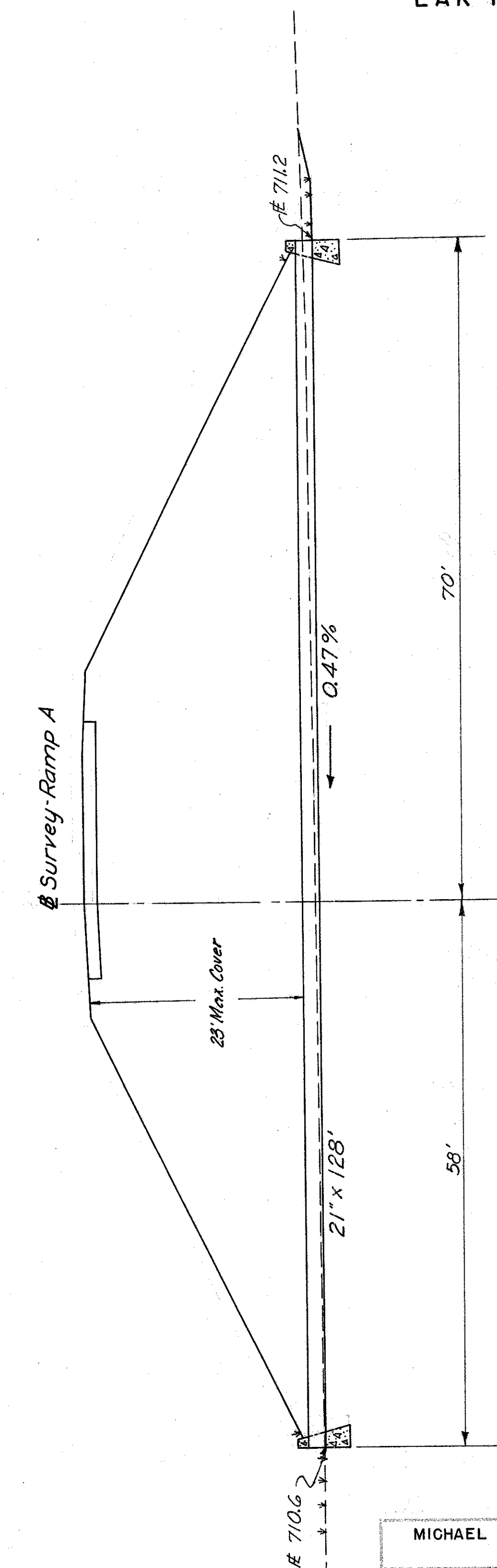
**ESTIMATED QUANTITIES**

|      |                                   |     |         |
|------|-----------------------------------|-----|---------|
| E-2  | Excavation for Structures         | 43  | Cu.Yds. |
| S-1  | Concrete for Structures Class "C" | 88  | Cu.Yds. |
| S-4  | Reinforcing Steel                 | 386 | Lbs.    |
| S-27 | 21" Pipe for Roadway Culvert      | 128 | Lin.Ft. |
| L-10 | Sodding                           | 26  | Sq.Yds. |



Headwater = 2.25 Ft.  
Outlet Velocity = 5 F.P.S.

Area = 3.0 Ac.  
Q25 = 10.4 C.F.S.



Scale: 1"=10'  
Sta. 17+12 Ramp "A"  
S.R. 306 Interchange

**CULVERT DATA**  
TYPE: Pipe Culvert S-27 Sec. M.G.G(d)  
Type "A" Hdw'l's  
SIZE: 21"x128"

**ESTIMATED QUANTITIES**

|      |                                   |     |         |
|------|-----------------------------------|-----|---------|
| E-2  | Excavation for Structures         | 93  | Cu.Yds. |
| S-1  | Concrete for Structures Class "C" | 88  | Cu.Yds. |
| S-4  | Reinforcing Steel                 | 386 | Lbs.    |
| S-27 | 21" Pipe for Roadway Culvert      | 128 | Lin.Ft. |
| L-10 | Sodding                           | 32  | Sq.Yds. |

MICHAEL BAKER, JR., CONSULTING ENGINEERS  
ROCHESTER, PENNSYLVANIA

STATE OF OHIO  
DEPARTMENT OF HIGHWAYS  
STATE HIGHWAY NO. 1  
C-44

CULVERT SECTIONS  
S.R. NO. 306 INTERCHANGE  
STA. 9+10 RAMP "B" & STA. 17+12 RAMP "A"

| Designed | Drawn | Traced | Checked | Reviewed | Date | Revised |
|----------|-------|--------|---------|----------|------|---------|
| L.I.     | R.D.  | J.P.C. | E.H.    |          |      |         |

Rev. 3-24-60 R.E.C.