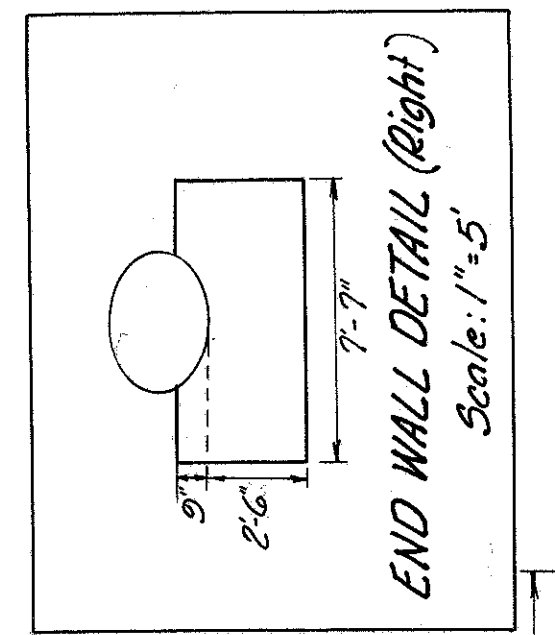
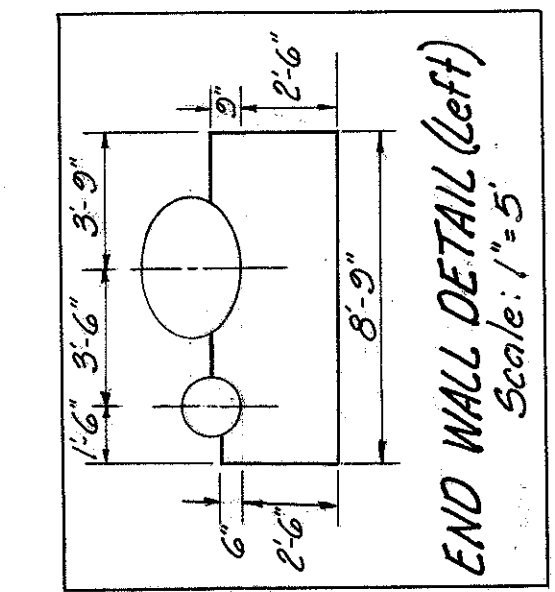
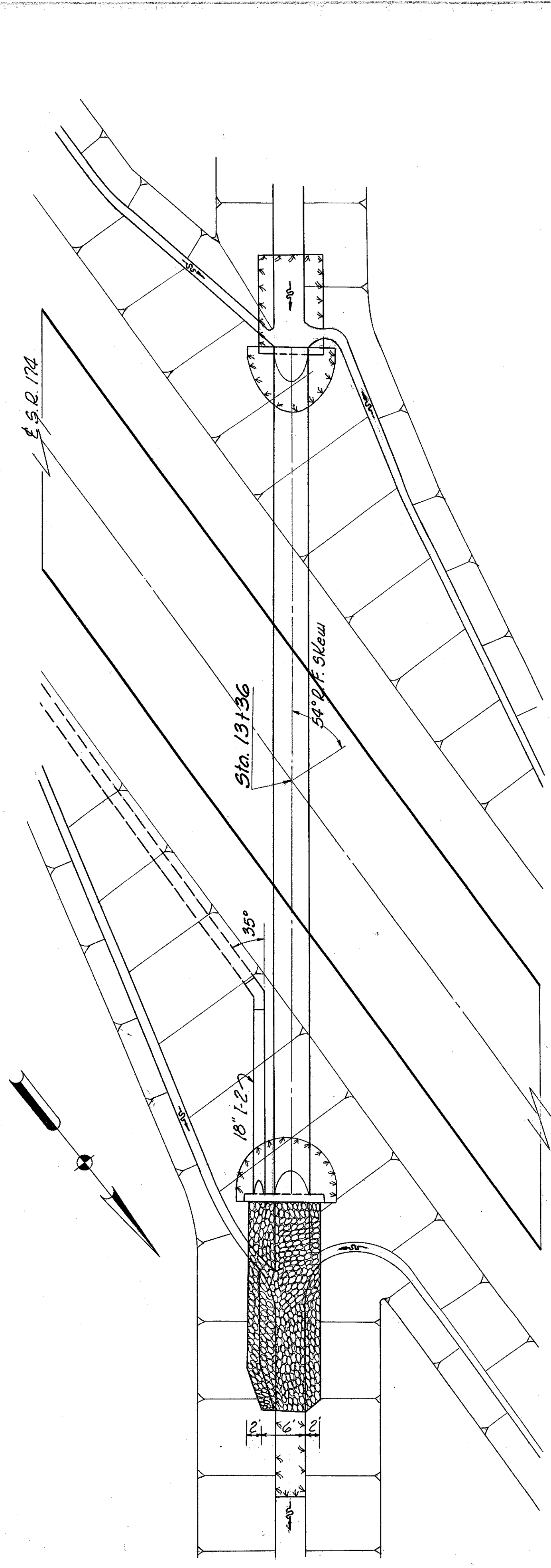
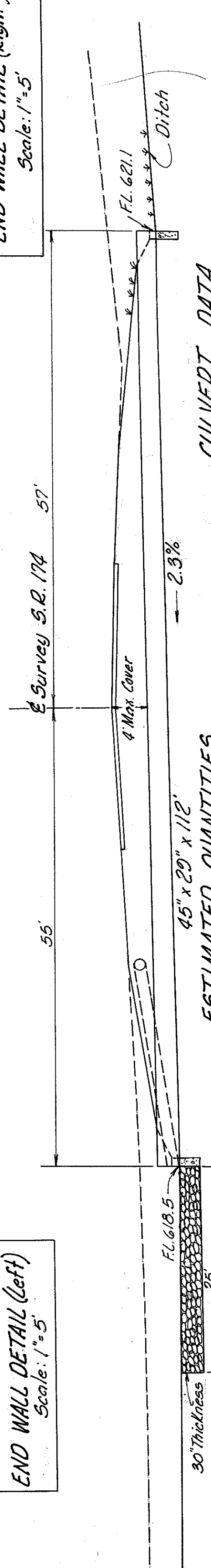


LAKE COUNTY  
LAK 1-4.02



Headwater = 2.1'  
Outlet Velocity = 12.0 F.P.S.

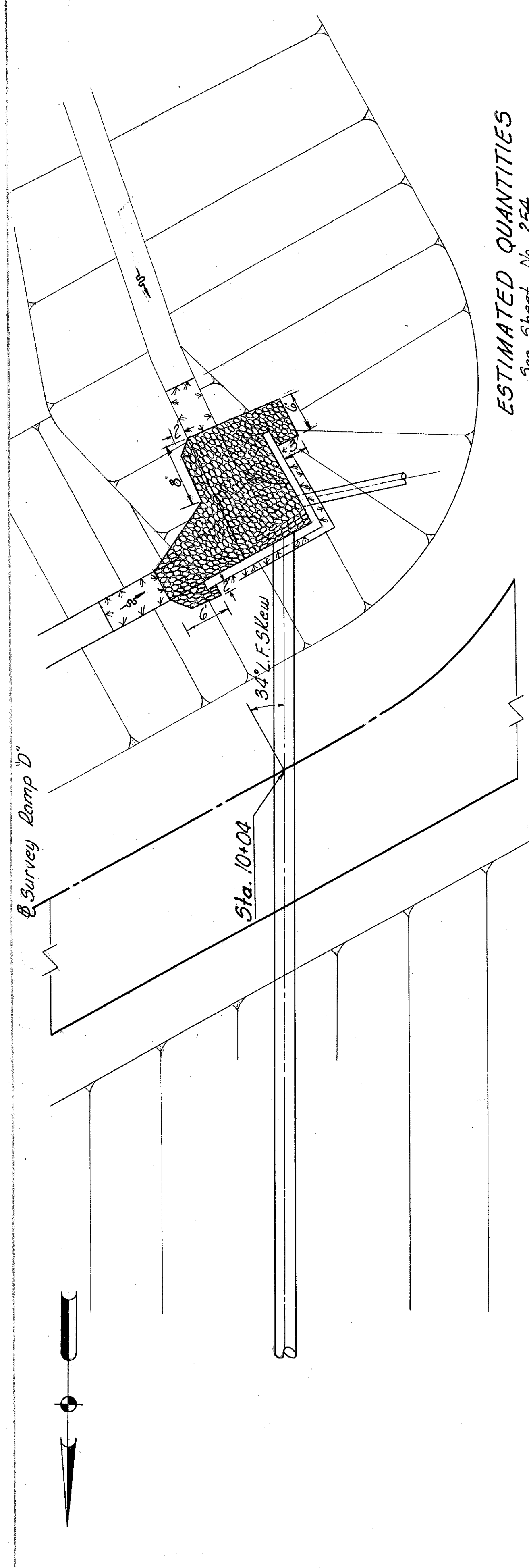
Drainage Area = 30 Acres  
Q<sub>50</sub> = 33 C.F.S.



**CULVERT DATA**  
TYPE: Elliptical Pipe Culvert S-27 M-206.6(b) Type P.C. & Hohluis (Modified)  
SIZE: 45" x 29" x 112'

**ESTIMATED QUANTITIES**  
45" x 29" x 112'  
E-2 Excavation for Structures 157 Cu Yds.  
S-1 Conc. for Structures Class E" 17 Cu Yds.  
S-27 45x29 Pipe for Roadway Culvert 112 Lin. Ft.  
L-10 Sodding 28 Sq. Yds.  
I-10 Dumped Rock Channel Protection 23 Cu Yds.

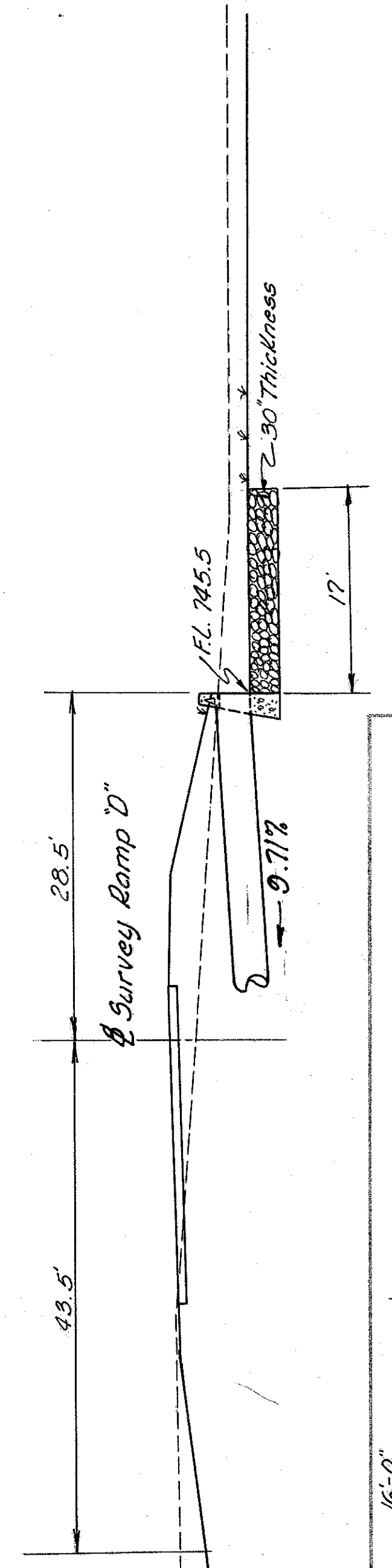
Scale: 1" = 10'



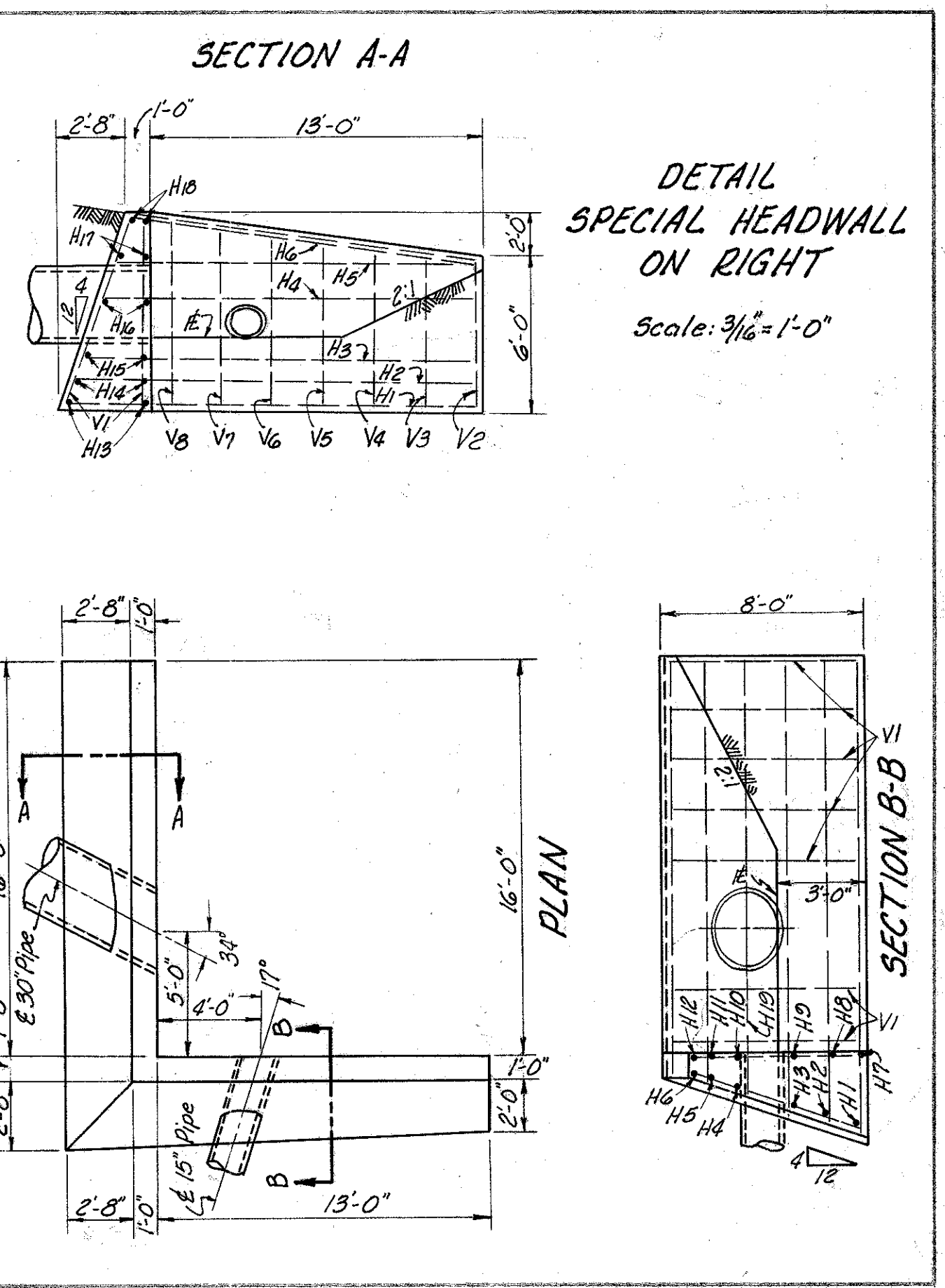
Headwater = 3.00  
Outlet Velocity = 9.7 F.P.S.

Drainage Area = 12 Acres  
Q<sub>50</sub> = 30.0 C.F.S.

**ESTIMATED QUANTITIES**  
See Sheet No. 254



See Culvert @ Sta. 36+91  
For Details & Quantities



**CULVERT DATA**  
TYPE: Pipe Culvert M-6.6(b) or M-6.8(b)  
Special Hohluis Rt.  
SIZE: 30" x 752'

REINFORCEMENT BAR SCHEDULE	
Bar No.	Lgth, Bar No. Lgth
H1	1 17'-10" H15 2 18'-4"
H2	1 17'-4" H16 2 17'-7"
H3	1 16'-9" H17 2 17'-2"
H4	1 16'-2" H18 2 16'-7"
H5	1 15'-6" H19 2 16'-0"
H6	1 15'-2" V1 14 7'-7"
H7	1 16'-3" V2 2 5'-7"
H8	1 15'-9" V3 2 5'-11"
H9	1 15'-3" V4 2 6'-5"
H10	1 14'-7" V5 2 6'-6"
H11	1 14'-3" V6 2 6'-10"
H12	1 14'-0" V7 2 7'-1"
H13	2 13'-2" V8 2 7'-4"
H14	2 13'-9"

MICHAEL BAKER, JR., CONSULTING ENGINEERS  
ROCHESTER, PENNSYLVANIA

STATE OF OHIO  
DEPARTMENT OF HIGHWAYS  
STATE HIGHWAY NO. 1  
C-44  
CULVERT SECTIONS  
S.R. NO. 174 STA. 13+36 & S.R. NO. 306  
INTERCHANGE STA. 10+04 RAMP "D"

Designed	Drawn	Traced	Checked	Reviewed	Date	Revised
L.I.	R.D.	A.L.M.	M.W.	E.H.		