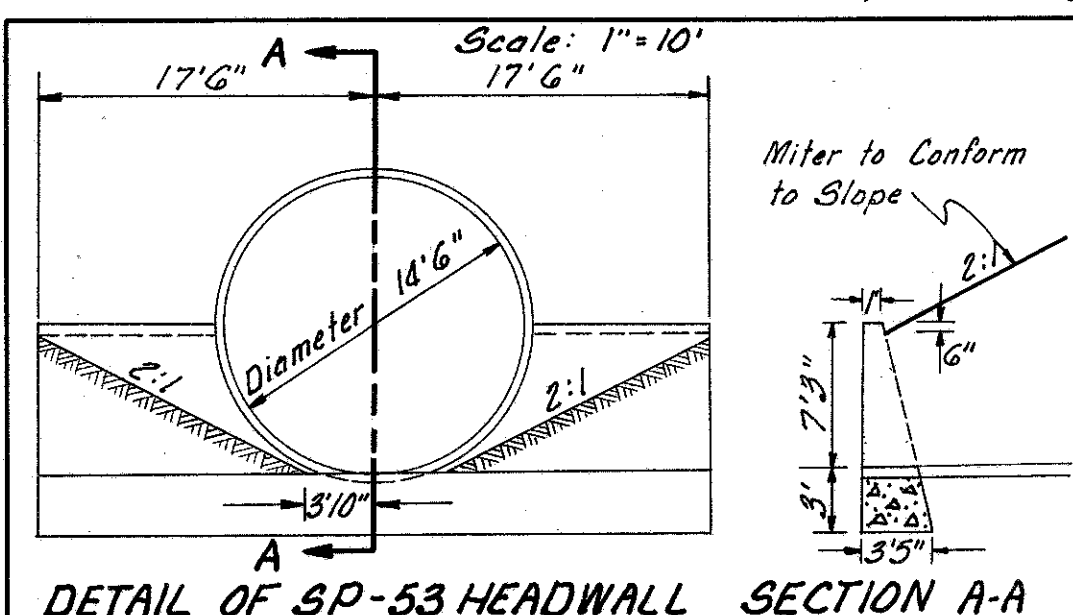
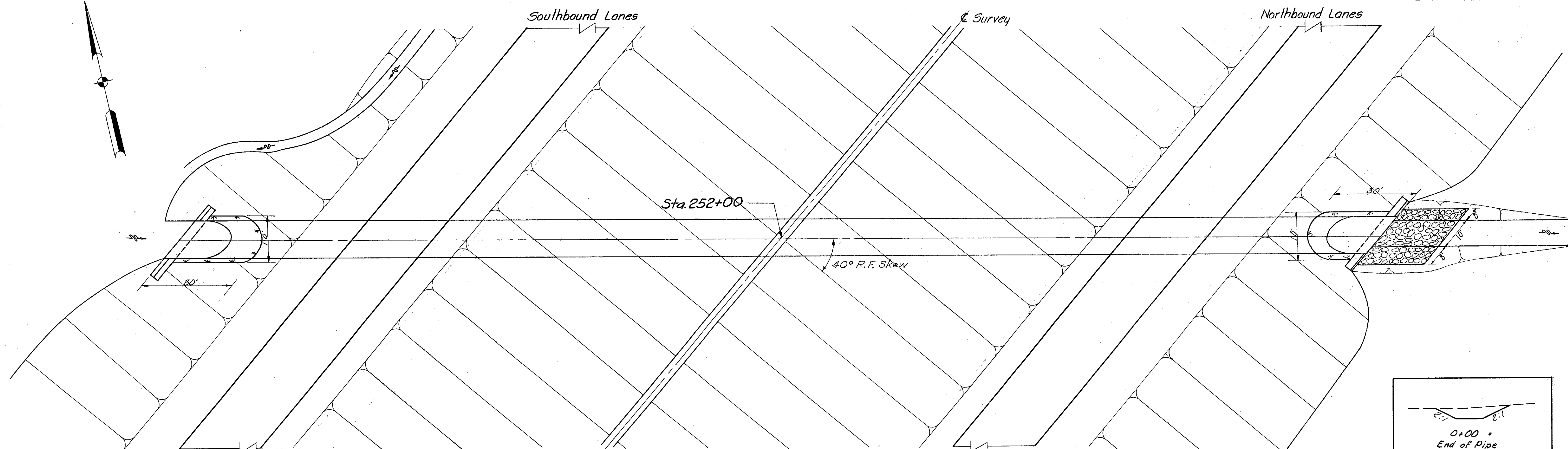


MICROFILMED
DEC 17 1987

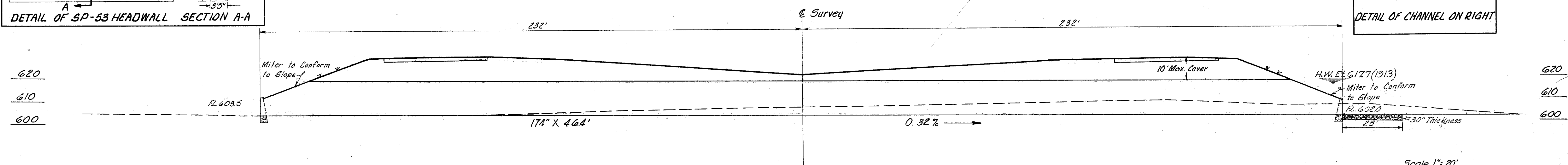
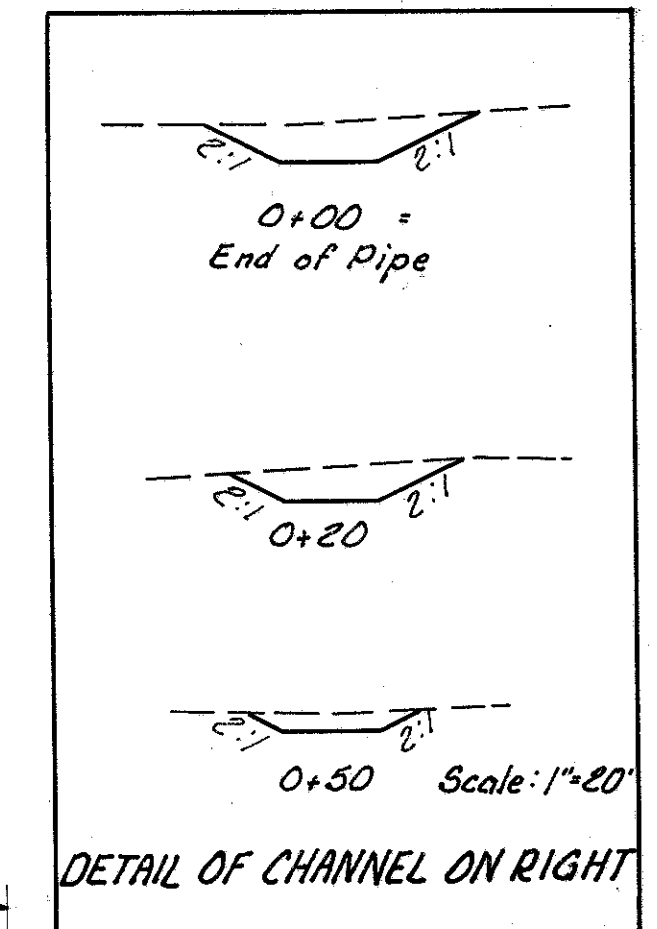
FED. RD. DIVISION	STATE	PROJECT	251 333
2	OHIO	T-1103 (20) S-46 (7)	

LAKE COUNTY
LAK-1-4.02



Drainage Area = 3400 Acres
Q₅₀ = 1500 C.F.S.

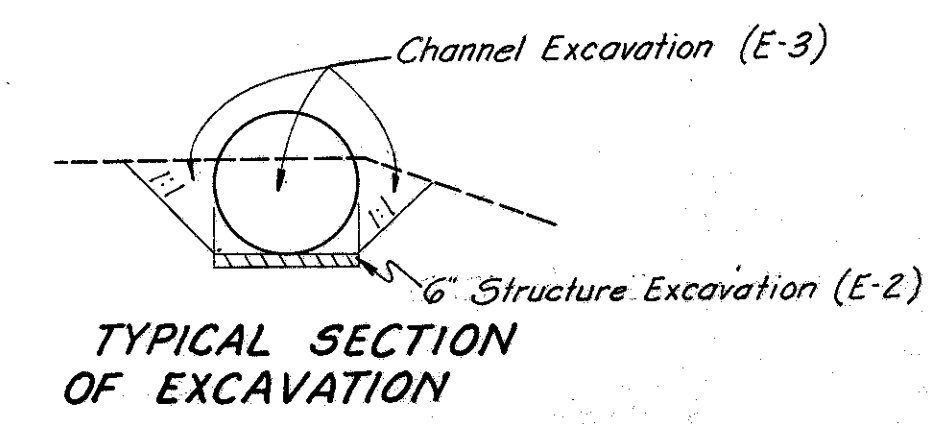
Headwater = 14.13'
Outlet Velocity = 10.9 F.P.S.



ESTIMATED QUANTITIES

E-2	Excavation For Structures	200	Cu. Yds.
E-3	Channel Excavation	1268	Cu. Yds.
S-1	Concrete For Structures Class "E"	46	Cu. Yds.
S-28	174' Sectional Corr. Metal Structure	464	Lin. Ft.
I-10	Dumped Rock Channel Protection	60	Cu. Yds.
L-10	Sodding	54	Sq. Yds.

CULVERT DATA
TYPE: Pipe Culvert S-28, M-G. 4 (q) Gage 5-3 SP-53 Hdw's.
SIZE: 174" X 464"



CULVERT NO. LAK-1-0463
MICHAEL BAKER, JR., CONSULTING ENGINEERS
ROCHESTER, PENNSYLVANIA

**STATE OF OHIO
DEPARTMENT OF HIGHWAYS**
STATE HIGHWAY NO. 1
C-44
CULVERT SECTION
STA. 252+00

Designed	Drawn	Traced	Checked	Reviewed Date	Revised
L.I.	L.I.	J.R.C. K.W.A.	E.H.		

PIPE CULVERT Sta. 252+00