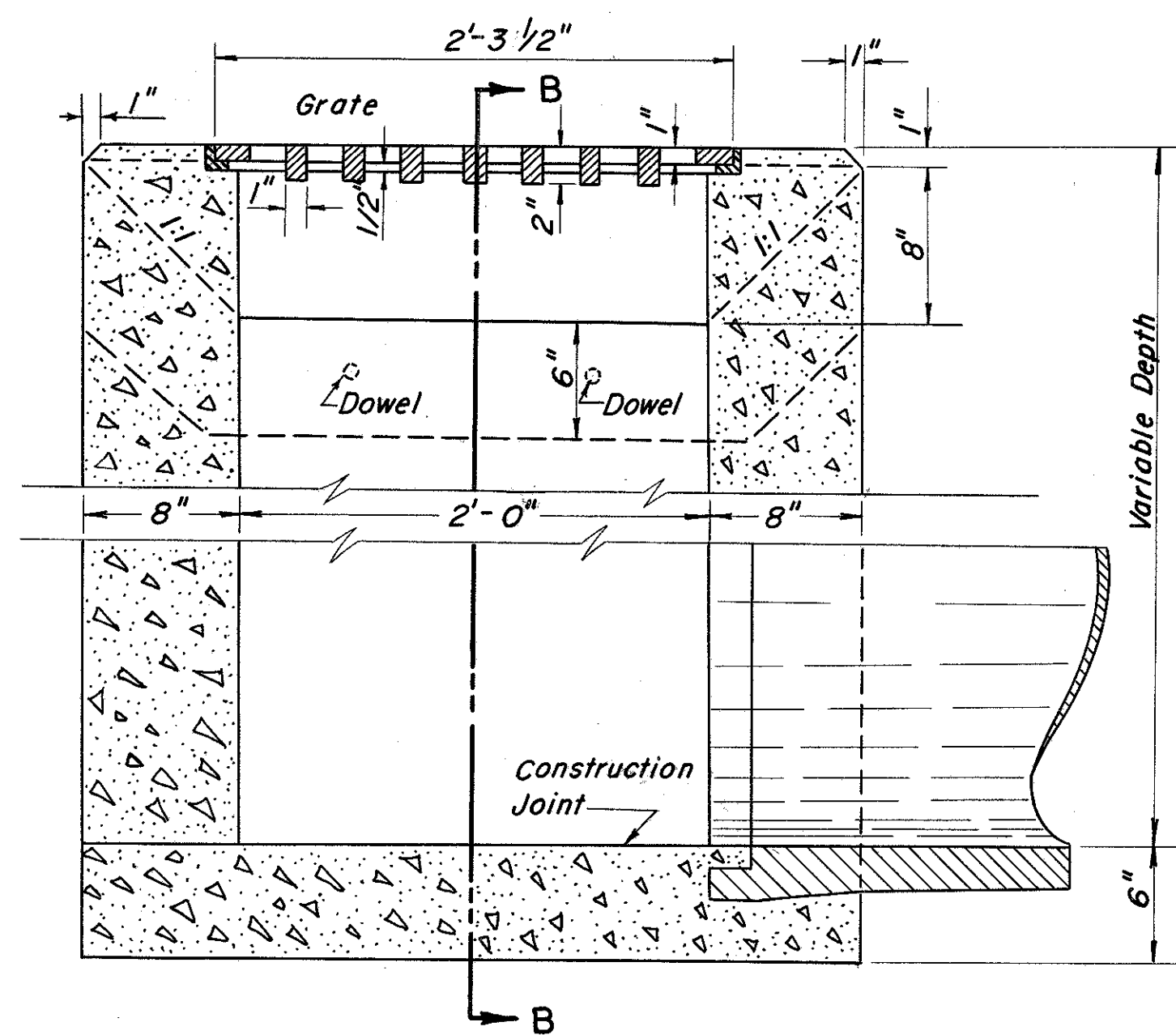


MODIFIED STANDARD No. 2-2-A CATCH BASIN with MODIFIED TYPE I PAVED GUTTER

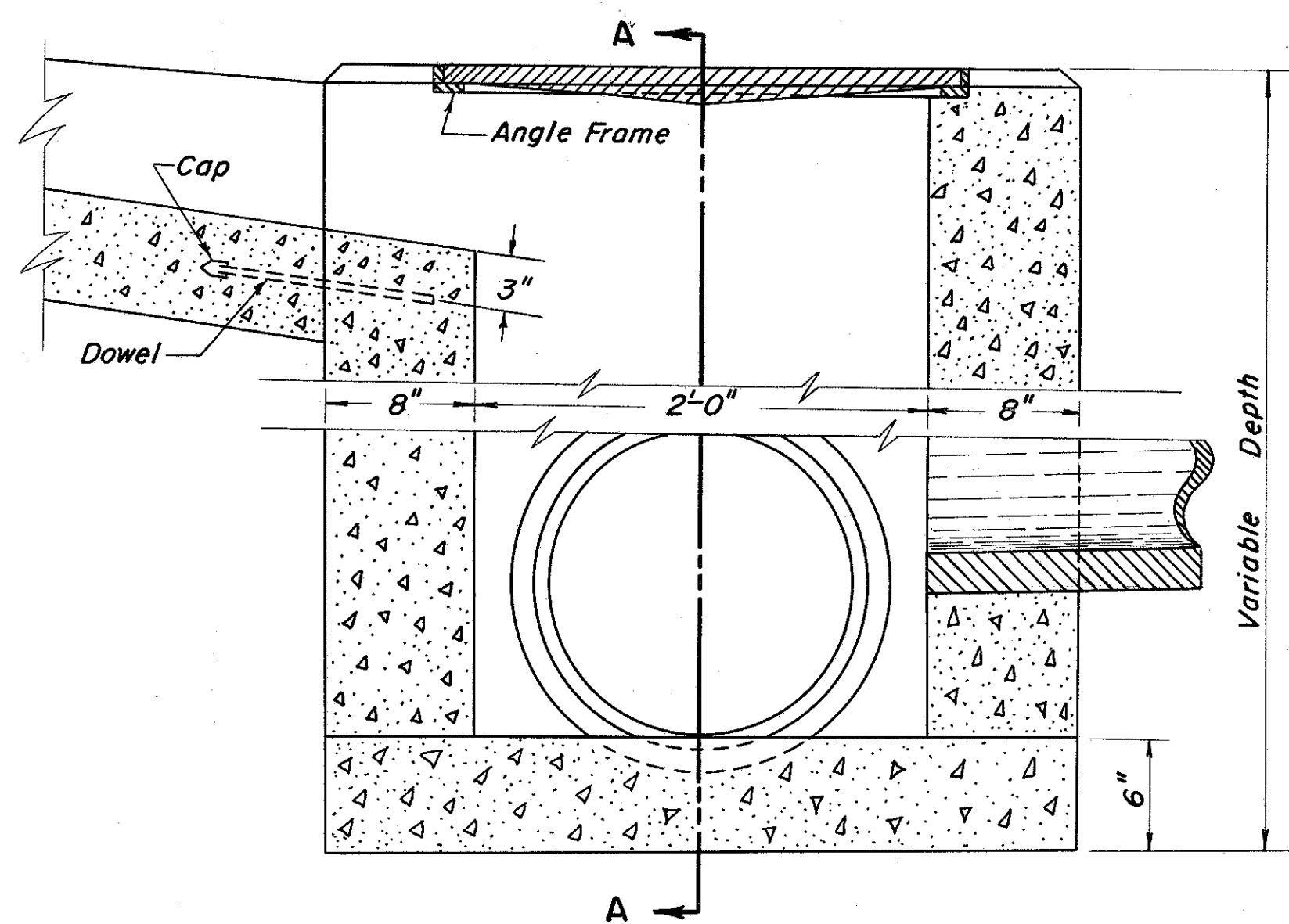
FED. RD. DIVISION	STATE	PROJECT
2	OHIO	I-1103 (20) S-46 (7)

247
333

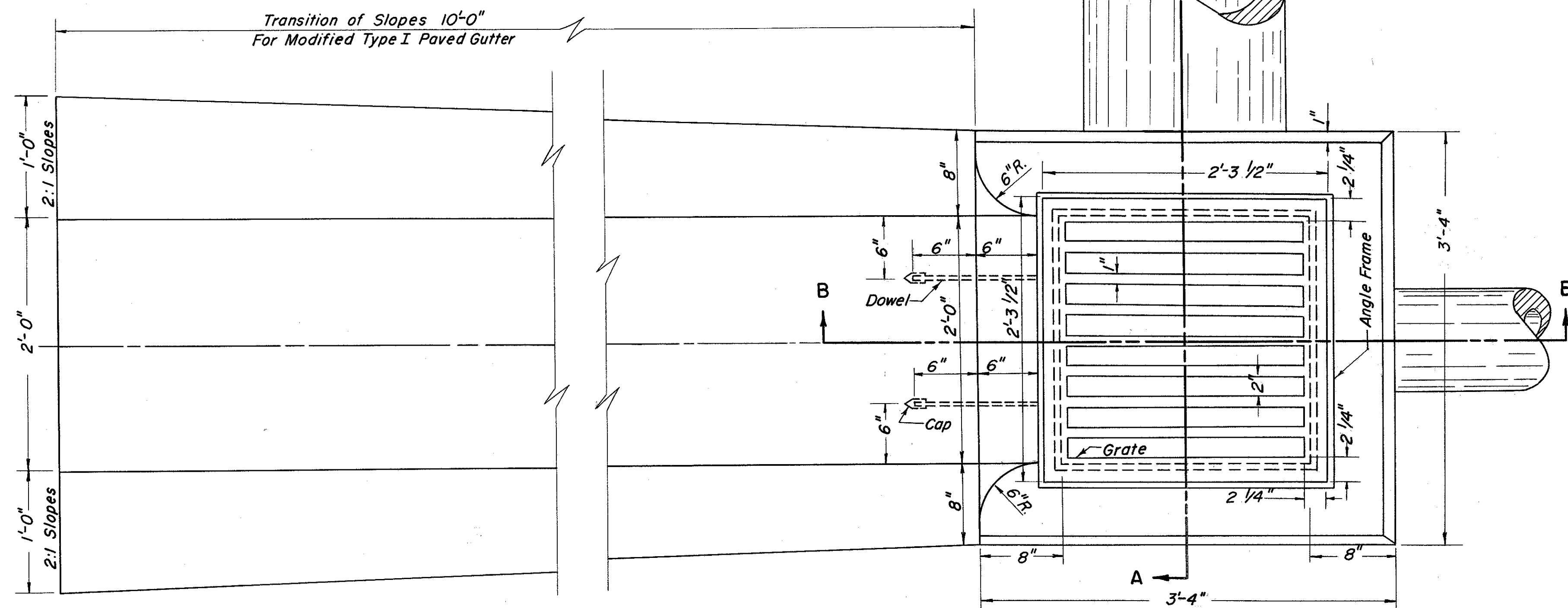
LAKE COUNTY
LAK-1-4.02



SECTION A-A



SECTION B-B



PLAN

NOTES:
 Unless otherwise shown Details and Notes shall conform to STANDARD DRAWING No. 1-8 C.B. 2-2-A
 Side Inlets and Paved Gutter shall be provided on both sides of the No. 2-2-A Catch Basin in Sags
 Dowels to be 1" round smooth bars 12" long, spaced as shown
 Cost of the 10' of Type I Paved Gutter as shown in this detail shall be included in the unit bid for the Catch Basin.

MICHAEL BAKER, JR., CONSULTING ENGINEERS
ROCHESTER PENNSYLVANIA

STATE OF OHIO
DEPARTMENT OF HIGHWAYS
STATE HIGHWAY NO. 1 - C-44
MODIFIED STD. NO. 2-2-A CATCH BASIN
WITH MODIFIED TYPE I PAVED GUTTER

Designed	Drawn	Traced	Checked	Reviewed Date	Revised
L1	ALH	ALH	F.A.N.		