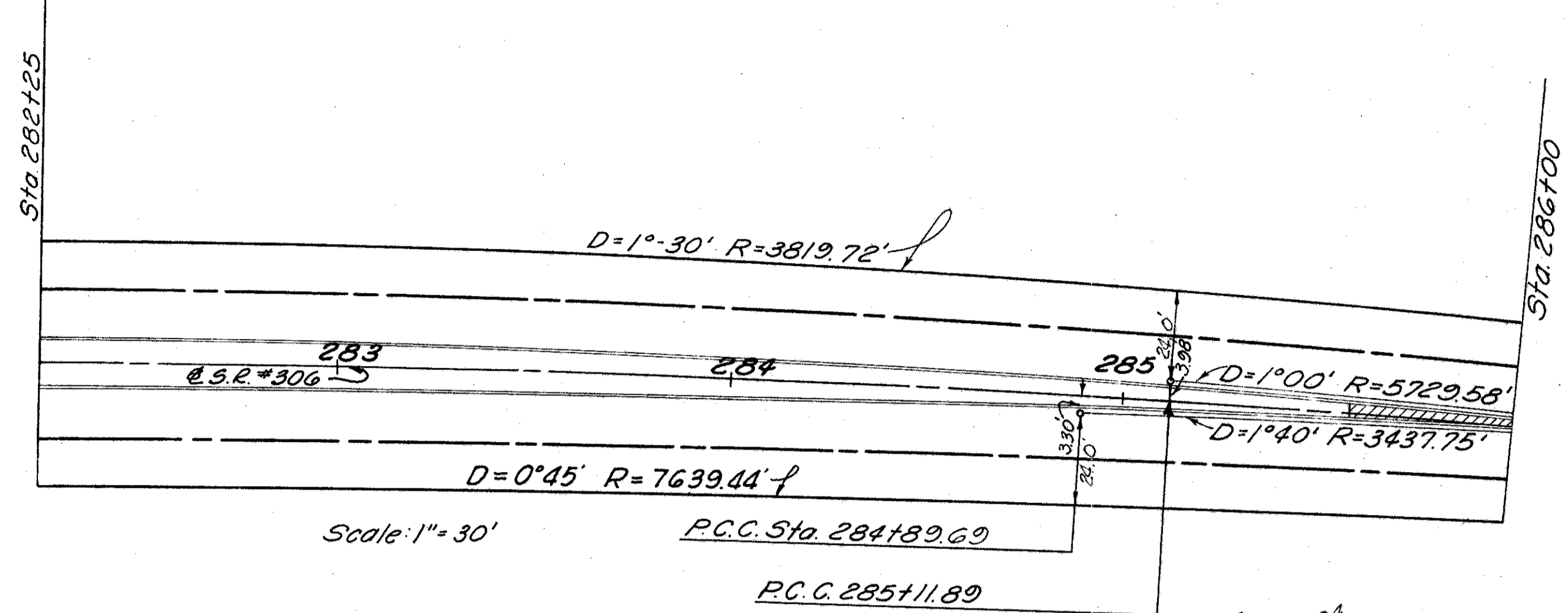
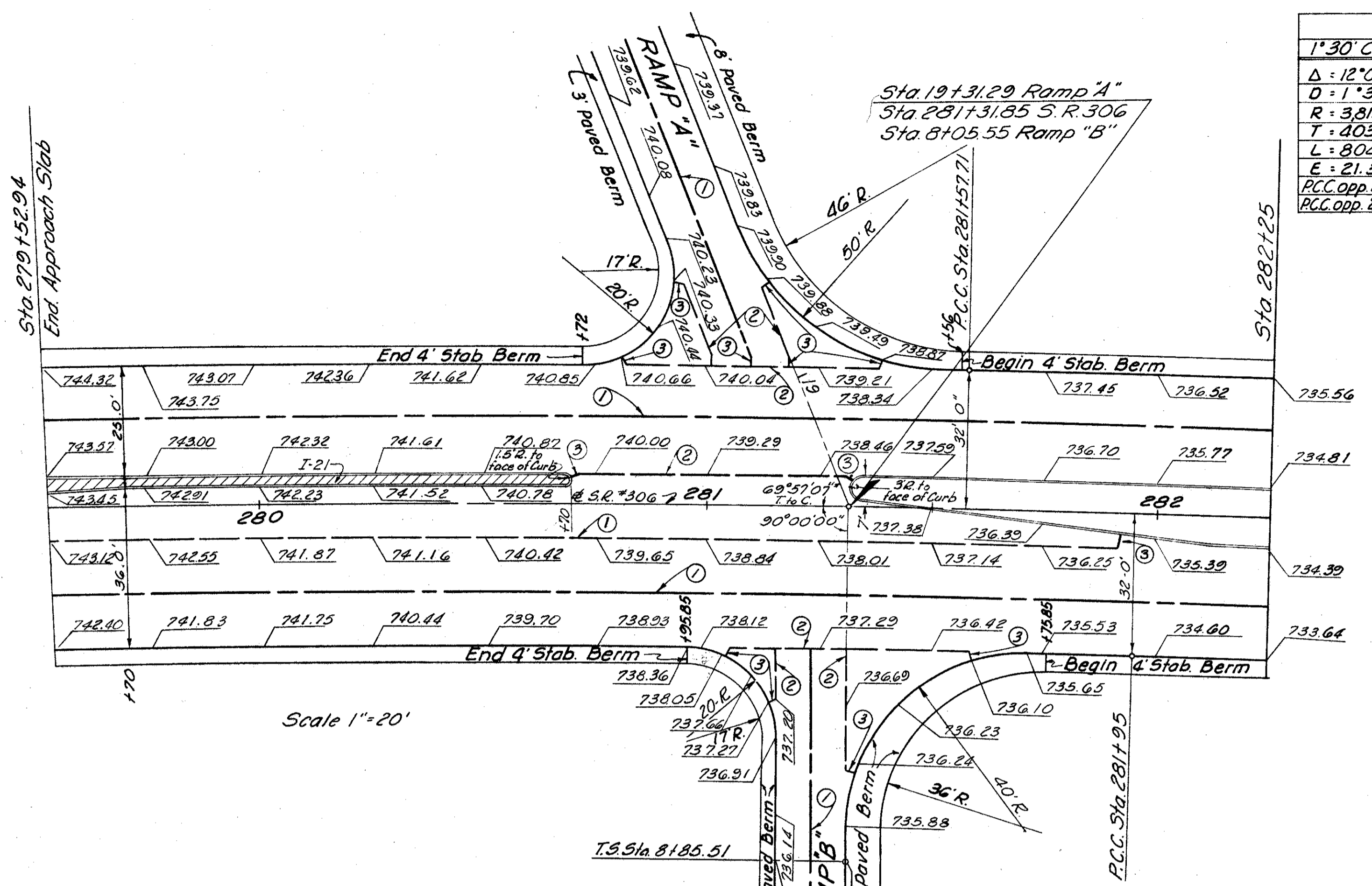
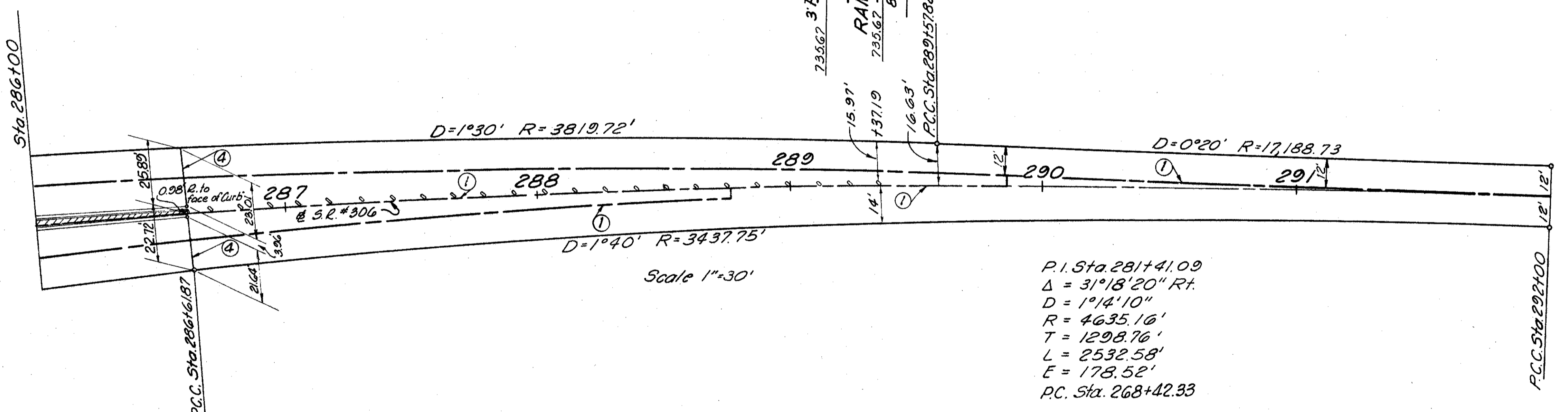


LAK-I-4.02
This sheet supersedes
Sheet No 214
Added 3-24-60 R.E.C.

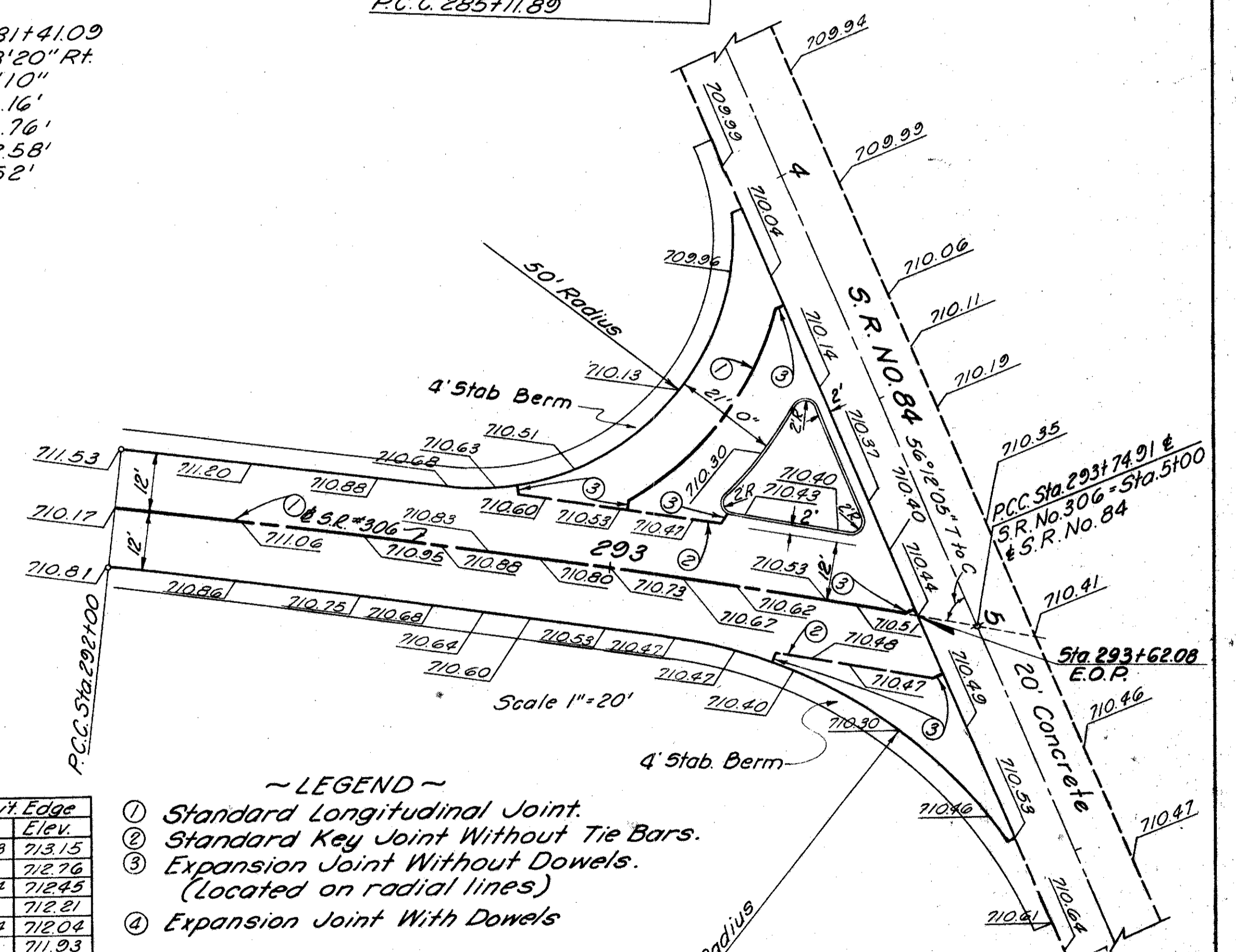
Lt. Edge Pav't		Lt. Edge Median		Rt. Edge Median		Rt. Edge Pav't	
1°30' Curve	0°20' Curve	1° Curve	1°20' Curve	0°45' Curve	1°40' Curve	1°40' Curve	1°40' Curve
$\Delta = 12^{\circ}04'26''$	$\Delta = 0^{\circ}48'35''$	$\Delta = 1^{\circ}30'06''$	$\Delta = 2^{\circ}52'07''$	$\Delta = 3^{\circ}23'44''$	$\Delta = 8^{\circ}56'29''$		
$D = 1^{\circ}30'$	$D = 0^{\circ}20'$	$D = 1^{\circ}00'$	$D = 1^{\circ}40'$	$D = 0^{\circ}45'$	$D = 1^{\circ}40'$		
$R = 3819.72$	$R = 17188.73$	$R = 5729.58$	$R = 2437.75$	$R = 7639.44$	$R = 3437.75$		
$T = 403.96$	$T = 121.46$	$T = 75.09$	$T = 86.08$	$T = 232.00$	$T = 268.79$		
$L = 802.93$	$L = 242.92$	$L = 150.17$	$L = 172.12$	$L = 463.85$	$L = 536.48$		
$E = 21.30$	$E = 0.43$	$E = 0.40$	$E = 1.08$	$E = 3.52$	$E = 10.49$		
P.C.C. opp. 281+57.71	P.C.C. opp. 289+57.82	P.C.C. opp. 285+11.89	P.C.C. opp. 284+89.69	P.C.C. opp. 281+95	P.C.C. opp. 286+61.87		
P.C.C. opp. 289+57.82	P.C.C. opp. 292+00	P.C.C. opp. 286+61.87	P.C.C. opp. 286+61.87	P.C.C. opp. 286+61.87	P.C.C. opp. 292+00		



P.I. Sta. 281+41.09
 $\Delta = 31^{\circ}18'20''$ Rt.
 $D = 1^{\circ}14'10''$
 $R = 4635.16'$
 $T = 1298.76'$
 $L = 2532.58'$
 $E = 178.52'$



P.I. Sta. 281+41.09
 $\Delta = 31^{\circ}18'20''$ Rt.
 $D = 1^{\circ}14'10''$
 $R = 4635.16'$
 $T = 1298.76'$
 $L = 2532.58'$
 $E = 178.52'$
P.C. Sta. 268+42.33



- ~ LEGEND ~
- ① Standard Longitudinal Joint.
 - ② Standard Key Joint Without Tie Bars.
 - ③ Expansion Joint Without Dowels. (Located on radial lines)
 - ④ Expansion Joint With Dowels

Station	Profile Grade	Lt. Pav't Edge		Lt. Median Edge		Rt. Median Edge		Rt. Pav't Edge	
		Dist.	Elev.	Dist.	Elev.	Dist.	Elev.	Dist.	Elev.
282+50	733.61	31.80	734.96	6.80	733.81	6.87	733.40	31.87	732.65
+75	732.61		733.96		732.81		732.41		731.66
283+00	731.61	31.51	732.53	6.51	731.80	6.53	731.41	31.53	730.66
+25	730.61		731.53		730.80		730.40		729.67
+50	729.61	31.11	730.54	6.11	729.79	5.98	729.43	30.98	728.68
+75	728.61		729.54		728.79		728.43		727.69
284+00	727.61	30.59	728.53	5.59	727.78	5.22	727.45	30.22	726.70
+25	726.61		727.52		726.77		726.47		725.72
+50	725.61	29.94	726.51	4.94	725.76	4.24	725.48	29.24	724.73
+75	724.61		725.50		724.75		724.50		723.75
285+00	723.61	29.18	724.49	4.18	723.74	3.04	723.52	28.04	722.77
+25	722.61		723.47		722.72		722.54		721.79
+50	721.61	28.30	722.46	3.36	721.71	1.92	721.55	26.64	720.81
+75	720.61		721.44		720.70		720.57		719.83
286+00	719.61	27.29	720.43	2.63	719.69	0.98	719.58	25.02	718.86
+25	718.62		719.42		718.63		718.60		717.90
+50	717.69	26.17	718.48	2.01	717.73	0.23	717.68	23.19	716.99
+75	716.84		717.61						716.17
287+00	716.06	24.93	716.81					21.26	715.42
+25	715.35		716.08						714.74
+50	714.72	23.56	715.43					19.50	714.13
+75	714.17		714.85						713.61

Station	Profile Grade	Lt. Pav't Edge		Lt. Median Edge		Rt. Median Edge		Rt. Pav't Edge	
		Dist.	Elev.	Dist.	Elev.	Dist.	Elev.	Dist.	Elev.
288+00	713.69	22.08	714.35					17.93	713.15
+25	713.28		713.92						712.76
+50	712.95	20.48	713.56					16.54	712.45
+75	712.69		713.28						712.21
289+00	712.50	18.77	713.06					15.34	712.04
+25	712.38		712.92						711.93
+50	712.32	17.41	712.84					14.56	711.88
+75	712.27		712.78						711.84
290+00	712.16	16.93	712.64					13.48	711.74
+25	712.10		712.60						711.74
+50	712.05	15.16	712.50					12.37	711.65
+75	711.94		712.37						711.55
291+00	711.83	13.78	712.24					12.84	711.44
+25	711.72		712.12						711.34
+50	711.61	12.79	711.99					12.37	711.24
+75	711.50		711.88						711.13
292+00	711.39	12.20	711.77					12.09	711.03
+25	711.28		711.64						710.92
+50	711.17	12.00	711.53					12.00	710.81

REVISIONS: 3-18-60 Grade Rates for 16'-4" Br. Cl.

MICHAEL BAKER, JR., CONSULTING ENGINEERS
ROCHESTER, PENNSYLVANIA

STATE OF OHIO
DEPARTMENT OF HIGHWAYS
STATE HIGHWAY NO. 1 - C-44
STATE ROUTE NO. 306
PAVEMENT TRANSITION AND
INTERSECTION DETAILS

Designed	Drawn	Traced	Checked	Reviewed	Date	Revised
H.V.	A.G.	J.H.	B.P.			