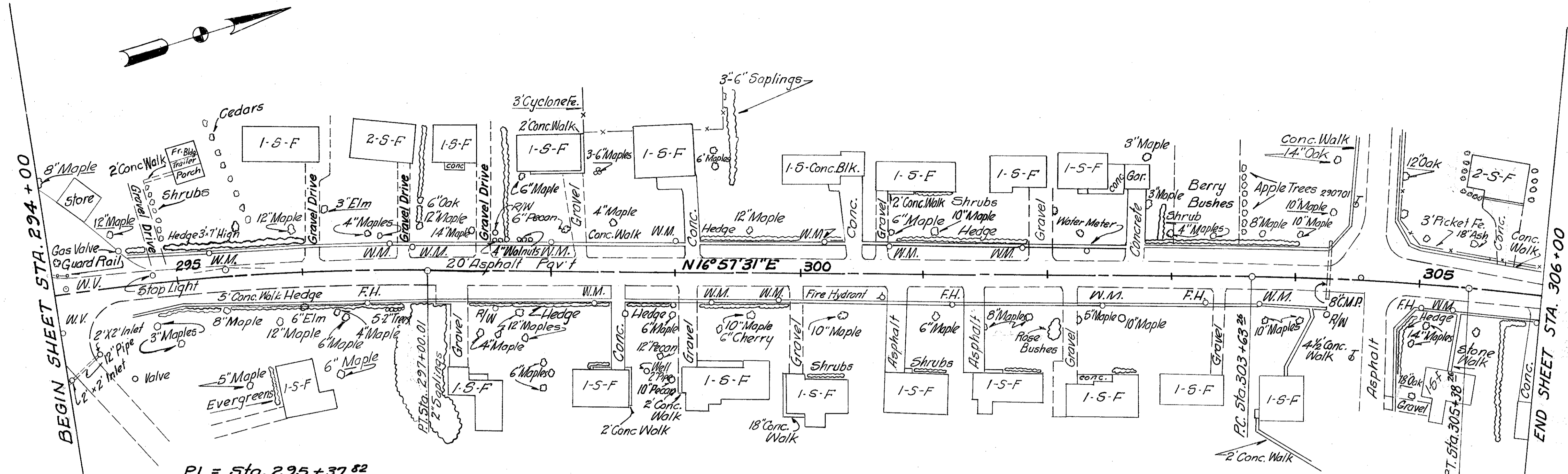
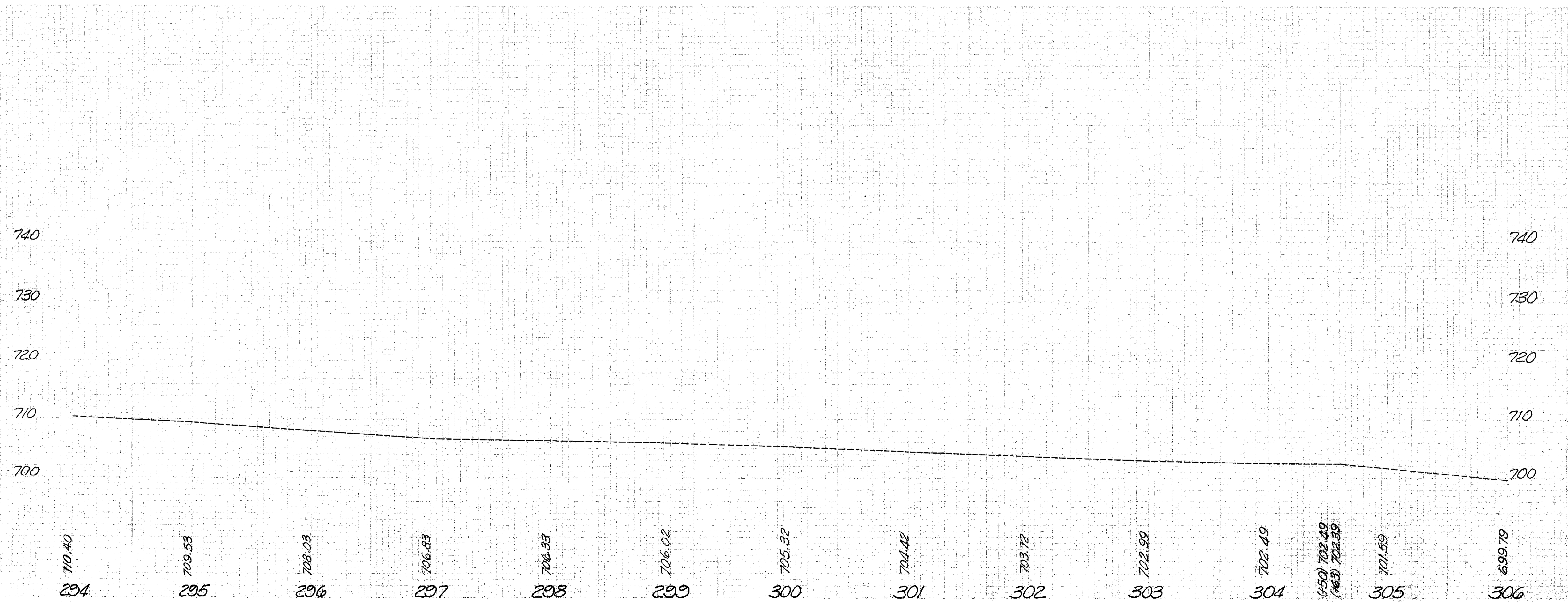


LAKE COUNTY
LAK-1-4.02



$PI = Sta. 295 + 37.52$
 $\Delta = 9^{\circ}17'00'' \text{ Rt.}$
 $D = 2^{\circ}51'18''$
 $R = 2006.47'$
 $T = 162.91'$
 $L = 325.10'$
 $E = 6.60'$

$PI = Sta. 304 + 50.82$
 $\Delta = 5^{\circ}15'00'' \text{ Rt.}$
 $D = 3^{\circ}00''$
 $R = 1909.86'$
 $T = 87.56'$
 $L = 175.00'$
 $E = 2.01'$



MICHAEL BAKER, JR., CONSULTING ENGINEERS
ROCHESTER, PENNSYLVANIA

STATE OF OHIO
DEPARTMENT OF HIGHWAYS
STATE HIGHWAY NO. 1
C-44
S.R. NO. 306 PLAN AND PROFILE
STA. 294+00 TO STA. 306+00

Designed	Drawn	Traced	Checked	Reviewed	Date	Revised
	K.A.	K.G.				

STATE ROUTE NO. 306 PLAN & PROFILE STA. 294+00-STA. 306+00