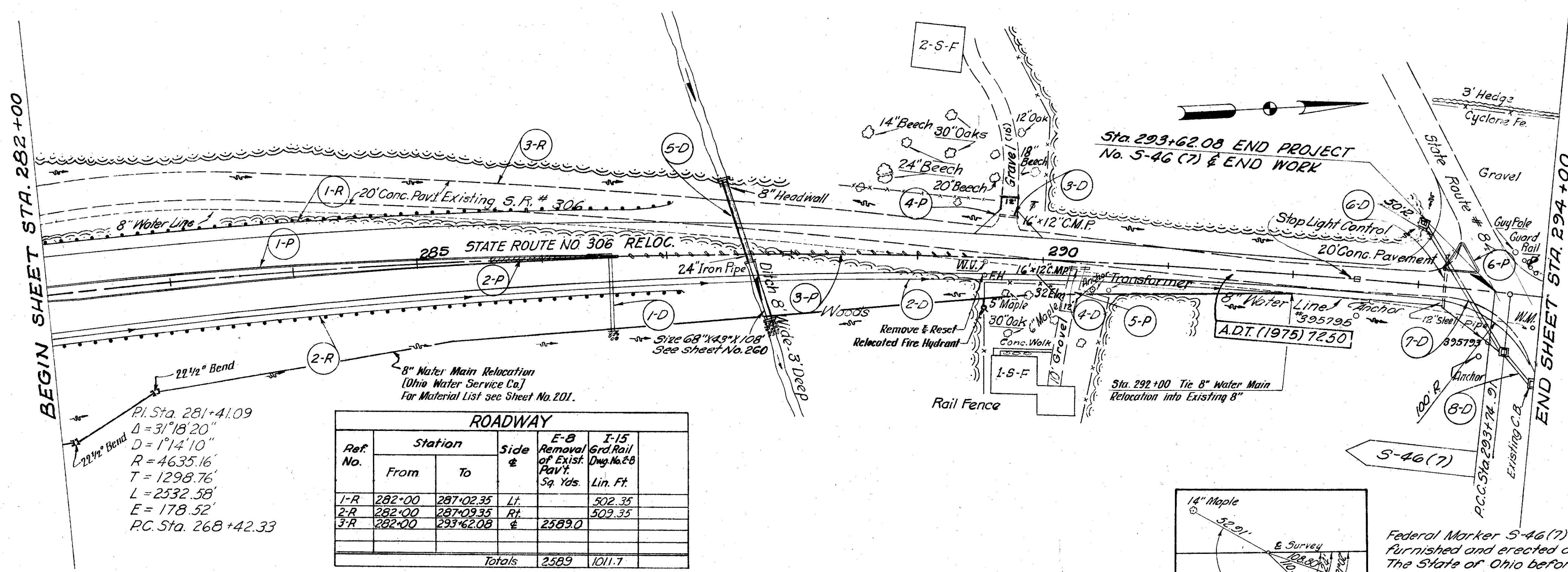


FED. RD. DIVISION	STATE	PROJECT
2	OHIO	S-46 (7) I-103 (20)

210S
333

LAKE COUNTY
LAK-1-4.02

This sheet supersedes
Sheet No 210
Added 3-24-60. R.E.C.



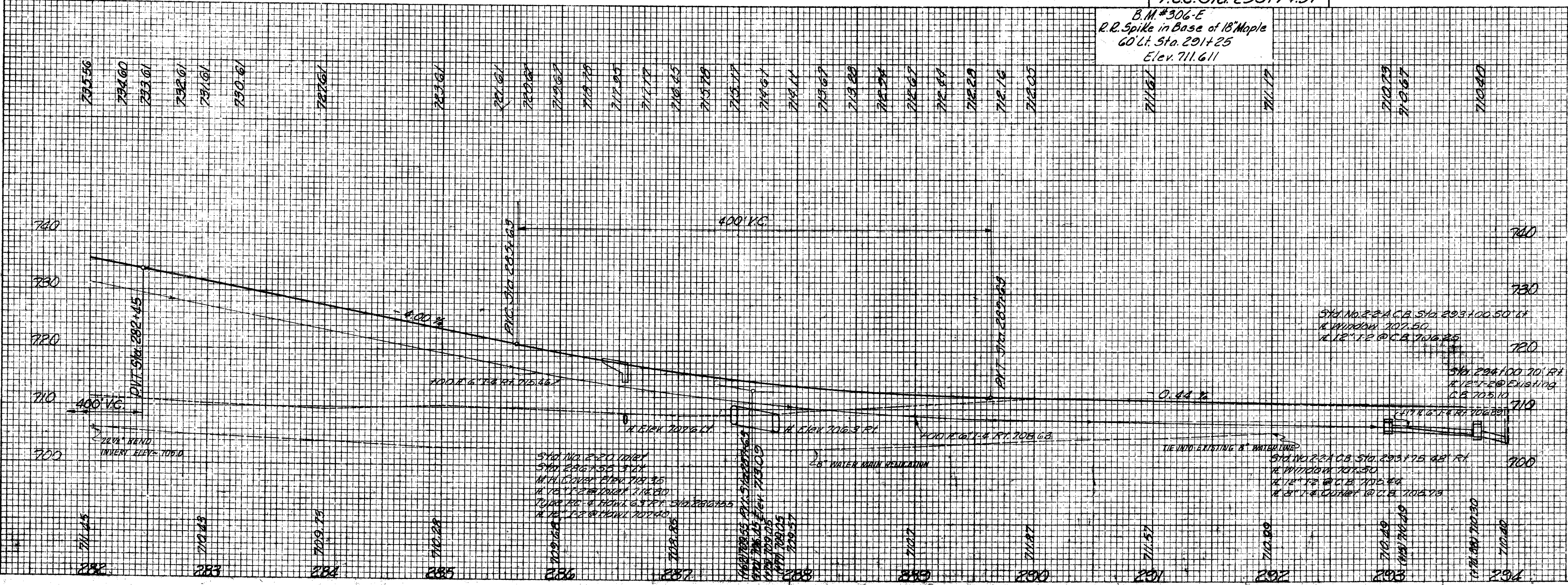
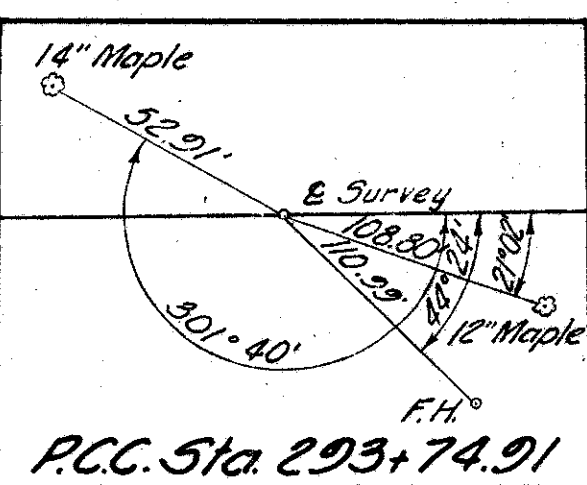
Ref. No.	Station		Side &	E-8 Removal of Exist. Pav't. Sq. Yds.	I-15 Grd. Rail Dwg. No. 68 Lin. Ft.
	From	To			
1-R	282+00	287+02.35	Lt.		502.35
2-R	282+00	287+09.35	Rt.		509.35
3-R	282+00	293+62.08	±	2589.0	
Totals				2589	1011.7

22 1/2° Bend
P.I. Sta. 281+41.09
Δ = 31°18'20"
D = 144'10"
R = 4635.16'
T = 1298.76'
L = 2532.58'
E = 178.52'
P.C. Sta. 268+42.33

Ref. No.	Station		Side &	B-19 Aggregate Base Course Cu. Yds.	I-12 Concrete Curb Lin. Ft.	I-21 Conc. Med. Pavement Type I-Sq. Yds.	I-23 Precast Conc. Traffic Dividers Each	2" 7-35 Asphaltic Concrete Type A Cu. Yd.
	From	To						
1-P	282+00	286+61.87	±		924			
2-P	285+58	286+61.87	±			29		
3-P	286+61.87	289+37.19	±				23	
4-P	289+71		Lt.	19				4
5-P	290+29		Rt.	20				4
6-P	293+19.00	293+47.00	Lt.		82			8
Totals				39	1006	29	23	8

Ref. No.	Station	Side &	Description	Length	
				From	To
I-2			Class A Storm Sewer Under Approaches Or Sec. M-6.5 (B)	12"	15'
I-4			Underdrain for Underdrain	6"	8'
I-5			Underdrain Bends	6"-30"	1
I-8			Sid. No. 2-2-4 CB	Each	1
I-10			Removed Rock Channel Protection	Curbs	2
E-12			Removal of Pipe Under	Lin. Ft.	66
E-15			Removal of Concrete for Over 15"	Lin. Ft.	66
E-2			Excavation for Structures	Cu. Yds.	2
Total					

Federal Marker S-46(7) will be furnished and erected on Rt. by The State of Ohio before acceptance of this Project.



REVISIONS: 5-27-59 Relocate Water Main Rt. Sta. 282+00 to 292+00
3-18-60 Grade Raise for 16" 4" Br. C.

MICHAEL BAKER, JR., CONSULTING ENGINEERS
ROCHESTER, PENNSYLVANIA

STATE OF OHIO
DEPARTMENT OF HIGHWAYS
STATE HIGHWAY NO. 1
C-44
S.R. NO. 306 PLAN AND PROFILE
STA. 282+00 TO STA. 294+00

Designed	Drawn	Traced	Checked	Reviewed	Date	Revised
H.V.	R.G.	K.A.	B.P.			

STATE ROUTE NO. 306 PLANE PROFILE STA. 282+00-294+00

FINAL SURVEY SURVEYED, FLOTTED, TEMPLATE, NOTE BOOK, AREAS CHECKED

FINAL SURVEY SURVEYED, FLOTTED, TEMPLATE, NOTE BOOK, AREAS CHECKED