

This sheet supersedes
Sheet No 209
Added 3-24-60 R.E.C.

ROADWAY & PAVEMENT S-46(7)

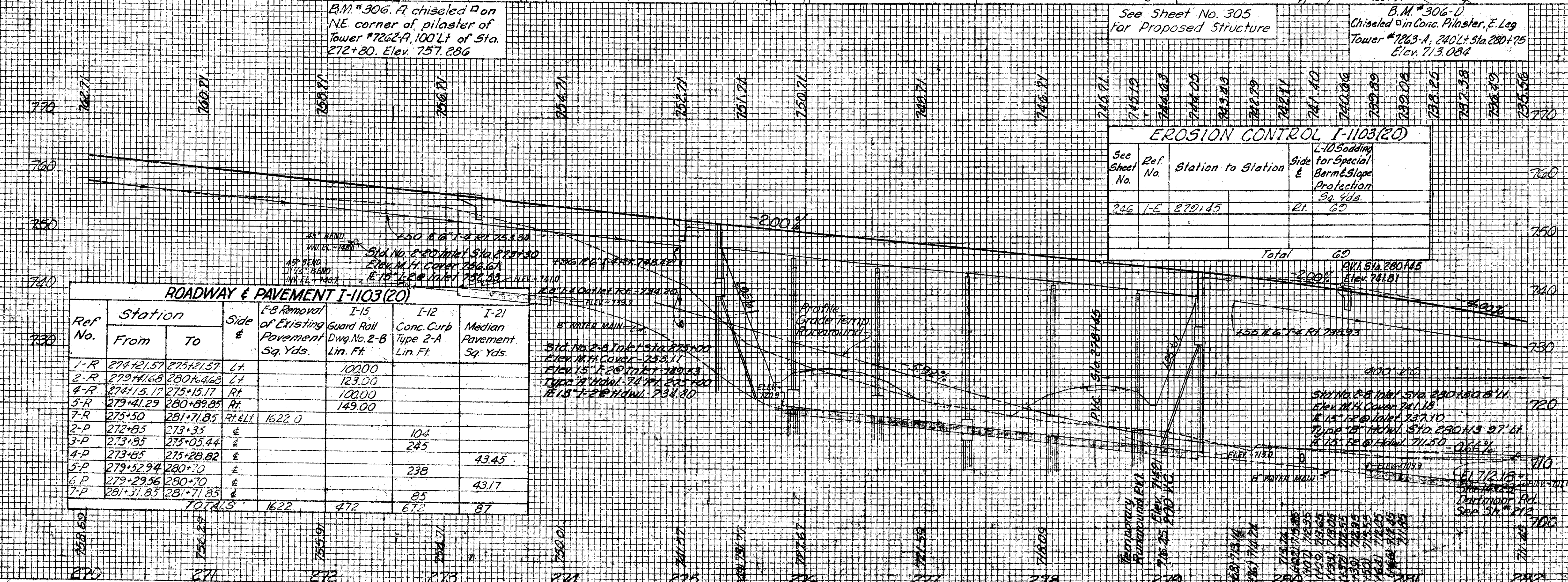
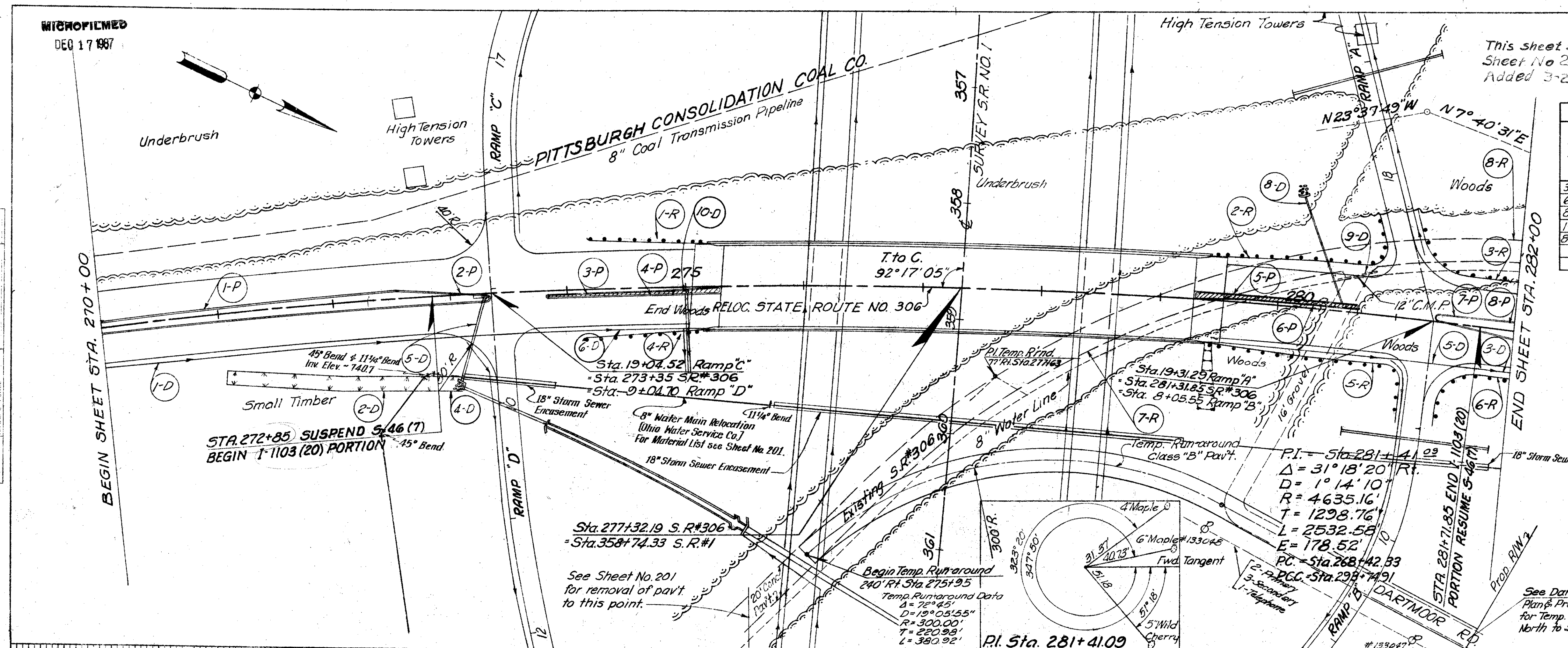
Ref. No.	Station		Side &	E-B Removal of Existing Pavement Sq. Yds.	I-12 Concrete Curb Type 2-A Lin. Ft.	I-15 Guard Rail Dwg. No. 2-B Lin. Ft.
	From	To				
3-R	281+71.85	282+00	Lt.			28.15
6-R	281+71.85	282+00	Rt.			28.15
8-R	281+71.85	282+00	Lt.	62.0		
1-P	270+00	272+85	H. & R.		575	
8-P	281+85	282+00	Lt. & Rt.		38	
Totals				62	633	56.30

Station	Side	Type	Removal of Pavement		Concrete		Guard Rail	
			Sq. Yds.	Lin. Ft.	Lin. Ft.	Lin. Ft.		
1-10	Lt.	Dumped Rock				12		
1-10	Rt.	Dumped Rock				12		
1-10	Lt.	Sodding		246				
1-10	Rt.	Sodding		246				
1-9	Lt.	Underdrain						21
1-9	Rt.	Underdrain						21
1-5	Lt.	Underdrain						4
1-5	Rt.	Underdrain						4
1-4	Lt.	Underdrain						10
1-4	Rt.	Underdrain						10
1-2	Lt.	Underdrain						30
1-2	Rt.	Underdrain						30
Total			62	633		56.30		56.30

FINAL SURVEY FLIPPED
SURVEY FLIPPED
NOTE BOOK PAGE NO.
AREAS CHECKED

BY DATE

BY DATE



REVISIONS:

- 5-27-59 Relocate water main Rt. Sta. 272+30 to 282+00
- 3-18-60 Grade Raise for 16" 4" Br. C.I.

MICHAEL BAKER, JR., CONSULTING ENGINEERS
ROCHESTER, PENNSYLVANIA

**STATE OF OHIO
DEPARTMENT OF HIGHWAYS
STATE HIGHWAY NO. 1**

**C-44
S.R. NO. 306 PLAN AND PROFILE
STA 270+00 TO STA. 282+00**

Designed	Drawn	Traced	Checked	Reviewed	Date	Revised
R.G.	K.A.	K.G.	B.R.			