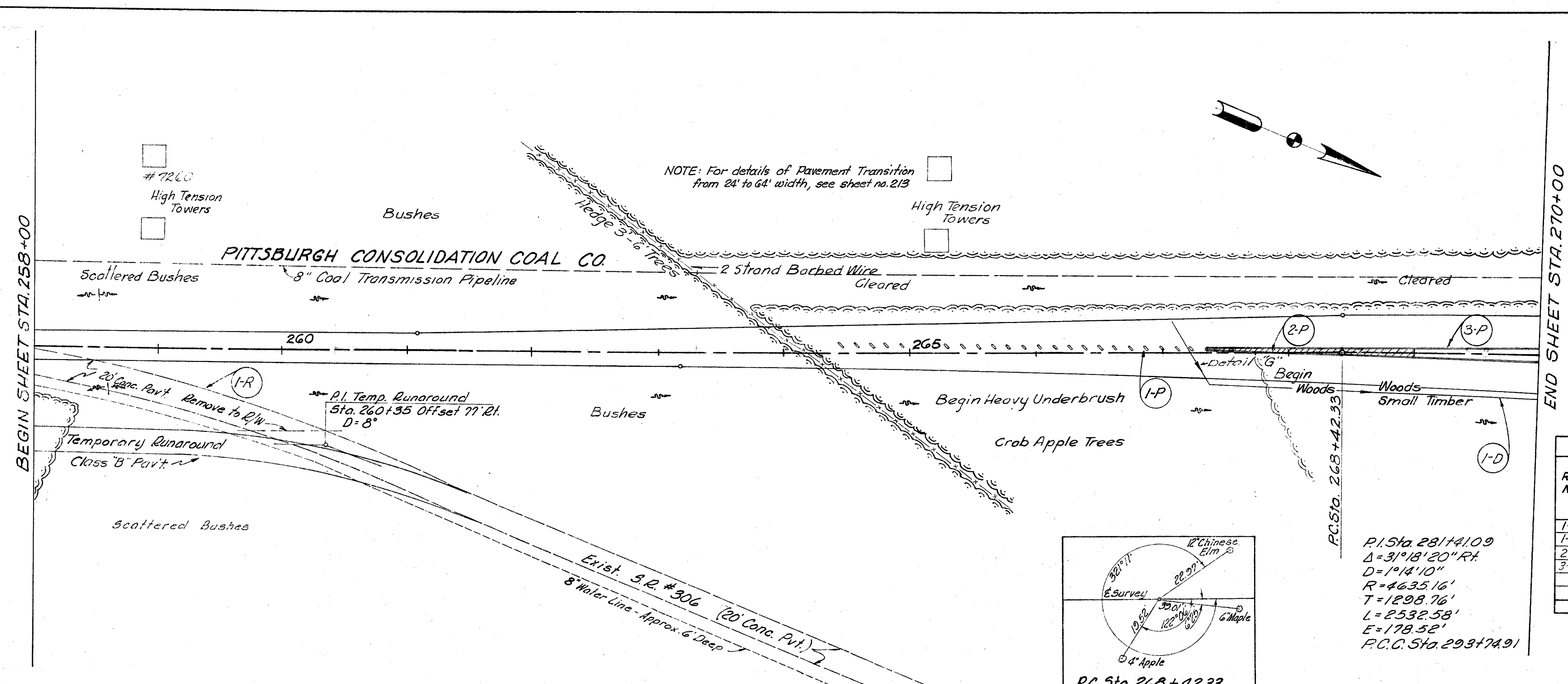


FED. RD. DIVISION	STATE	PROJECT
2	OHIO	S-46 (7) I-1103 (20)

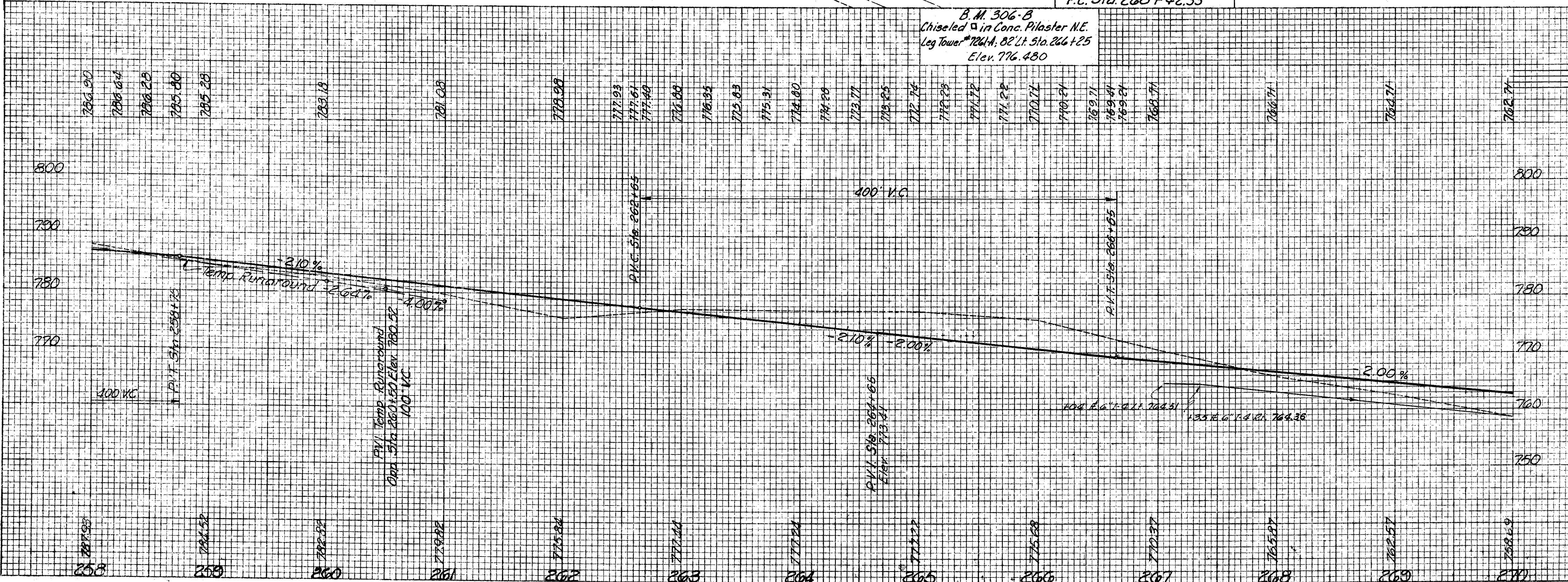
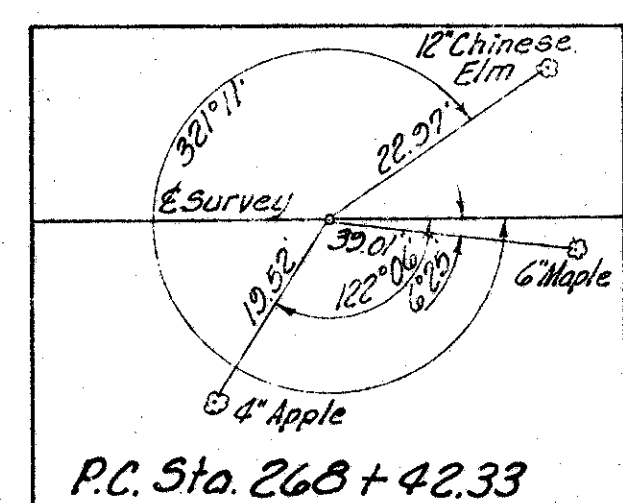
208-3
335

LAKE COUNTY
LAK-1-4.02

This sheet supersedes
Sheet No 208
Added 3-24-60 R.E.C.



Ref. No.	Station		Side	E-8 Removal of Existing Pavement Sq. Yds.	I-12 Concrete Curb Type 2-A Lin. Ft.	I-21 Conc. Median Pavement Type 1 Sq. Yd.	I-23 Precast Conc. Traffic Dividers Each
	From	To					
I-R	258+00	260+35	€	473			
I-P	264+37.5	267+35	€				25
2-P	267+35	268+20	€			24	
3-P	267+35	270+00	€		537		
Totals				473	537	24	25



See Sh. No.	Ref. No.	Station	Side	I-4	I-5
				Underdrain Spacing Lin. Ft.	Underdrain Spacing Lin. Ft.
241	I-D	267+06	RT.	318	1
Total				318	1

REVISIONS: 3-18-60 Grade Raise for 16'-4" Br. Cl.

MICHAEL BAKER, JR., CONSULTING ENGINEERS
ROCHESTER, PENNSYLVANIA

STATE OF OHIO
DEPARTMENT OF HIGHWAYS
STATE HIGHWAY NO. 1
C-44
S.R. NO. 306 PLAN AND PROFILE
STA. 258+00 TO STA. 270+00

Designed	Drawn	Traced	Checked	Reviewed Date	Revision
T.L.	K.A.	A.H.	R.G.		