

S-1

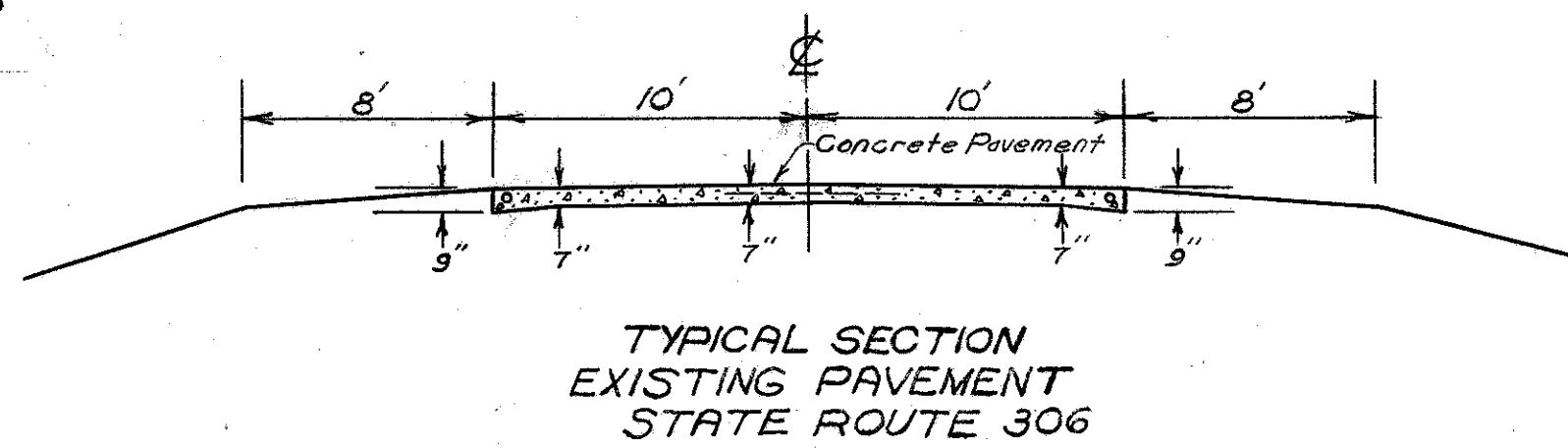
V-5

LAK-90-498-793±

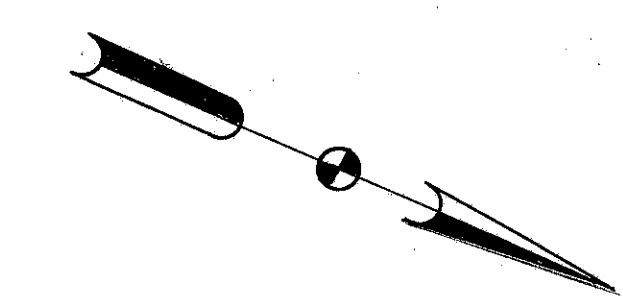
FED. RD DIVISION	STATE	PROJECT
2	OHIO	S-46 (7) I-1103 (20)

207
333

LAKE COUNTY
LAK-1-4.02



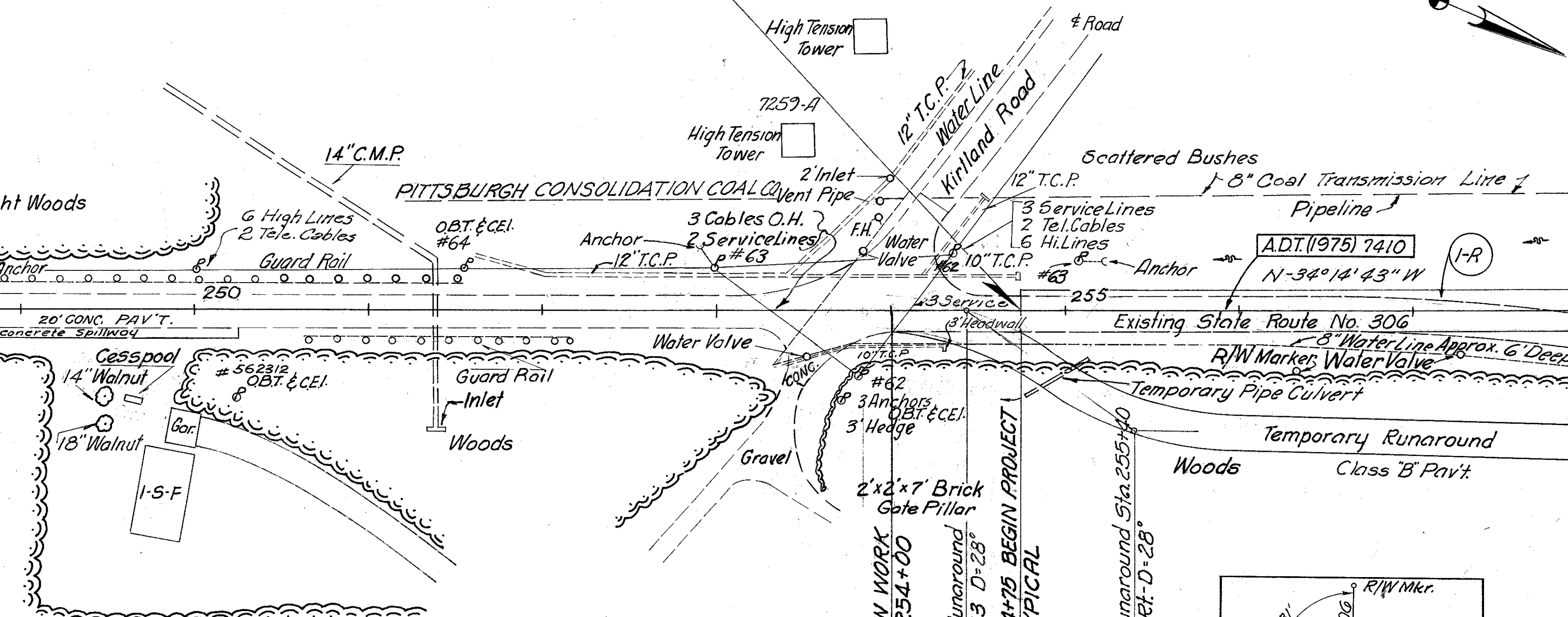
STA. 254+75 BEGIN PROJECT NO. S-46 (7)



ROADWAY				
Ref. No.	Station		Side &	E-B Removal of Existing Pavement Sq. Yds.
	From	To		
I-R	254+75	258+00	E	723.0
Totals				723

P.I. Sta. 247+09.35
Δ = 2°-14'-00"
D = 1°-00'-00"
R = 5729.58'
T = 111.68'
L = 223.33'
E = 1.09'
P.C. Sta. 245+97.67

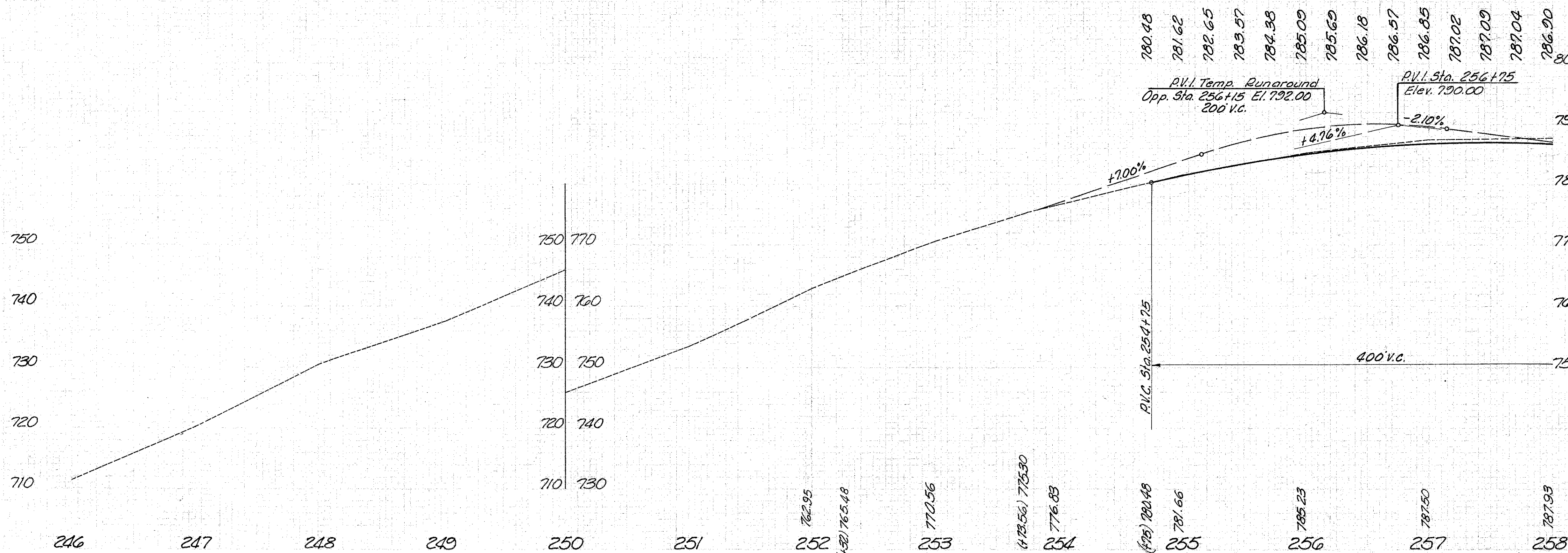
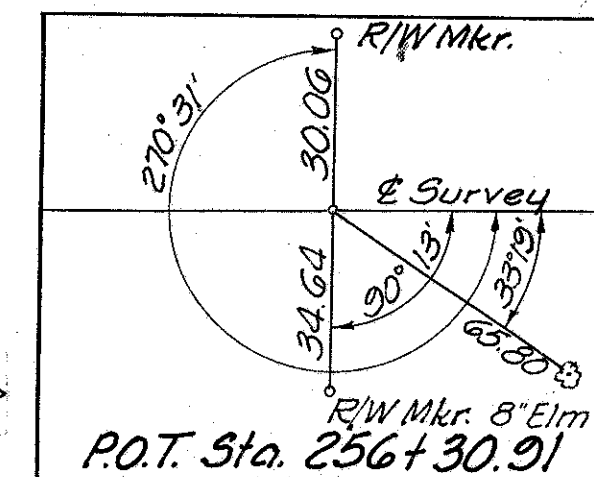
P.T. Sta. 248+21.00



END SHEET STA. 258+00

Federal Marker S-46 (7) will be furnished & erected on Rt. by The State of Ohio before acceptance of this Project.

B.M. 306-A
8th Bolt from Ground N.E. Leg of Tower #7529-A, 88 ft. Sta. 253+54 Elev. 777.147



MICHAEL BAKER, JR., CONSULTING ENGINEERS
ROCHESTER, PENNSYLVANIA

STATE OF OHIO
DEPARTMENT OF HIGHWAYS
STATE HIGHWAY NO. 1
C-44
S.R. NO. 306 PLAN AND PROFILE
STA. 246+00 TO STA. 258+00

Designed	Drawn	Traced	Checked	Reviewed Date	Revised
R.G.	R.P.	K.A.	B.P.		

STATE ROUTE NO. 306 PLAN & PROFILE STA. 246+00 - STA. 258+00